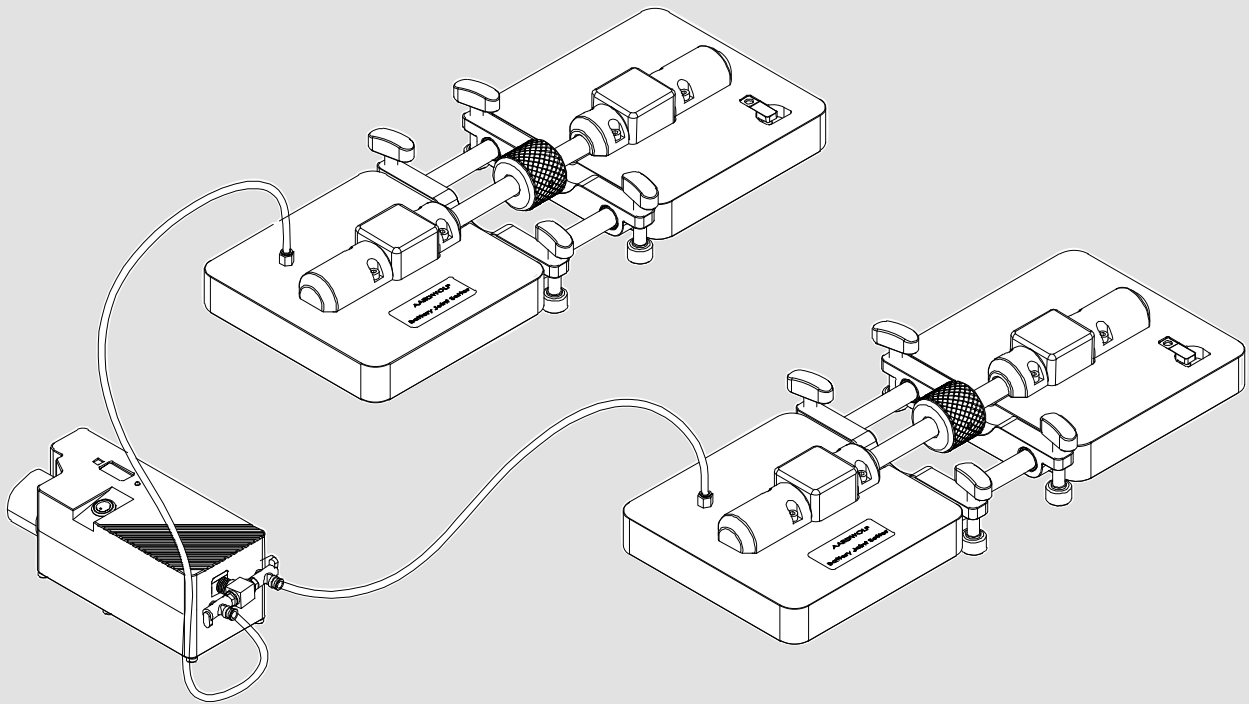


BATTERY JOINT SETTER

BOSS



CREATED BY

AARDWOLF INDUSTRIES
Marketing Department

Published on:
March 2025

Contact us:  info@aardwolf.com.au
 www.aardwolf.com.au



Dear Customer,

Thank you for choosing the Aardwolf Battery Joint Setter - BOSS.

The Aardwolf Battery Joint Setter is a cutting-edge tool designed to revolutionize material handling in key industries such as construction, stone fabrication. With its advanced features and user-friendly design, it ensures precision, efficiency, and safety in every operation.

Before using the Battery Joint Setter, please read the user manual carefully and keep it readily accessible at all times.

If you have any questions, require spare parts, or need to report any issues, please contact the Aardwolf distributor at your location, provide the product code, and serial number, and send them to *info@aardwolf.com.au* for assistance.

We hope this advanced tool meets your needs and exceeds your expectations.

Best regards,

Aardwolf Industries

 info@aardwolf.com.au

 www.aardwolf.com.au

INDEX

	<i>Page</i>
01 OVERVIEW	
<i>Introduction</i>	<i>04</i>
<i>Specifications</i>	<i>05</i>
<i>Dimensions</i>	<i>05</i>
<i>Drawing</i>	<i>06</i>
<i>Parts List</i>	<i>07</i>
02 SAFETY INSTRUCTIONS	<i>08</i>
03 USER INSTRUCTIONS	<i>09</i>
04 MAINTENANCE	<i>10</i>
05 WARRANTY	<i>11</i>

01 OVERVIEW



INTRODUCTION

The Aardwolf Battery Joint Setter is designed to join two slabs, closing gaps with precision. It works efficiently on stone and glass with non-porous surfaces. It is ideal for joining quartz countertop joints, granite countertop joints, and general countertop joints. The roller nut mechanism allows easy operation with a simple hand movement.

With dual vacuum bases and precision steel guide axles, the Battery Joint Setter provides stability and accuracy. A central axle, supported by two sub-axles, enables smooth movement to align slabs. The balance bar with four leveling knobs ensures even surfaces. The battery-powered vacuum pump maintains consistent pressure in both pads for reliable performance.

Key features

- ❖ **Efficient Seam Closure**
The roller nut system securely connects slabs with minimal effort, while the battery-powered vacuum pump ensures uninterrupted suction. It is particularly useful for joining quartz countertop joints and granite countertop joints.
- ❖ **Stable & Accurate**
Dual vacuum bases and precision guide axles ensure perfect alignment, making it a valuable countertop joint connector.
- ❖ **Light & Compact Design**
Designed for portability and ease of use.
- ❖ **Versatile Use & User-Friendly**
Designed for portability and ease of use. Easily close or open seams by rotating the roller nut with your palm. Ideal for stone and glass installations, with simple operation for quick setup and adjustments.



SPECIFICATIONS

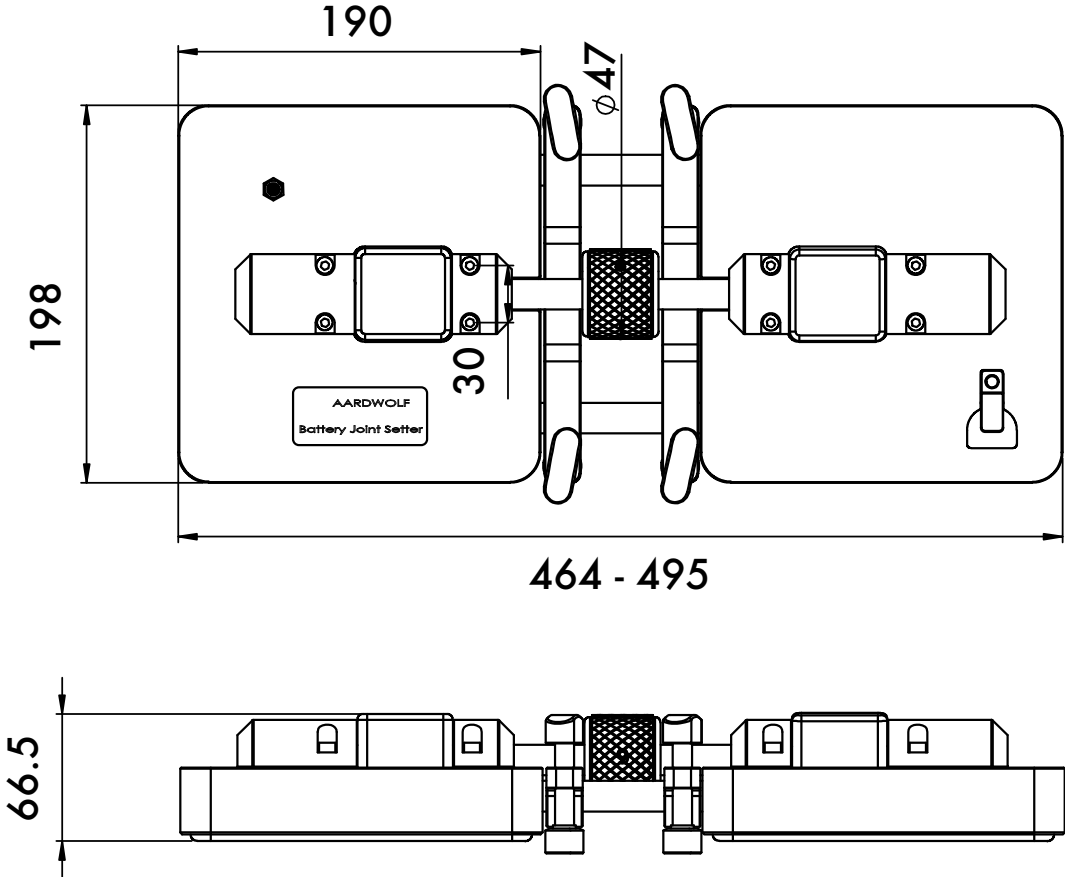
BOSS	Metric	Imperial
Number of Vacuum Bases	2 pcs	2 pcs
Vacuum Base Size	198 x 190 mm	7.8" x 7.5"
Net Weight	14.8 kg	32.6 lb
Gross Weight	17 kg	37.5 lb
Packaging Dimensions	600 x 290 x 280 mm	23.6 x 11.4 x 11 in

Note: Sold in set including 2 pairs of Joint Setter and Battery Vacuum Pump

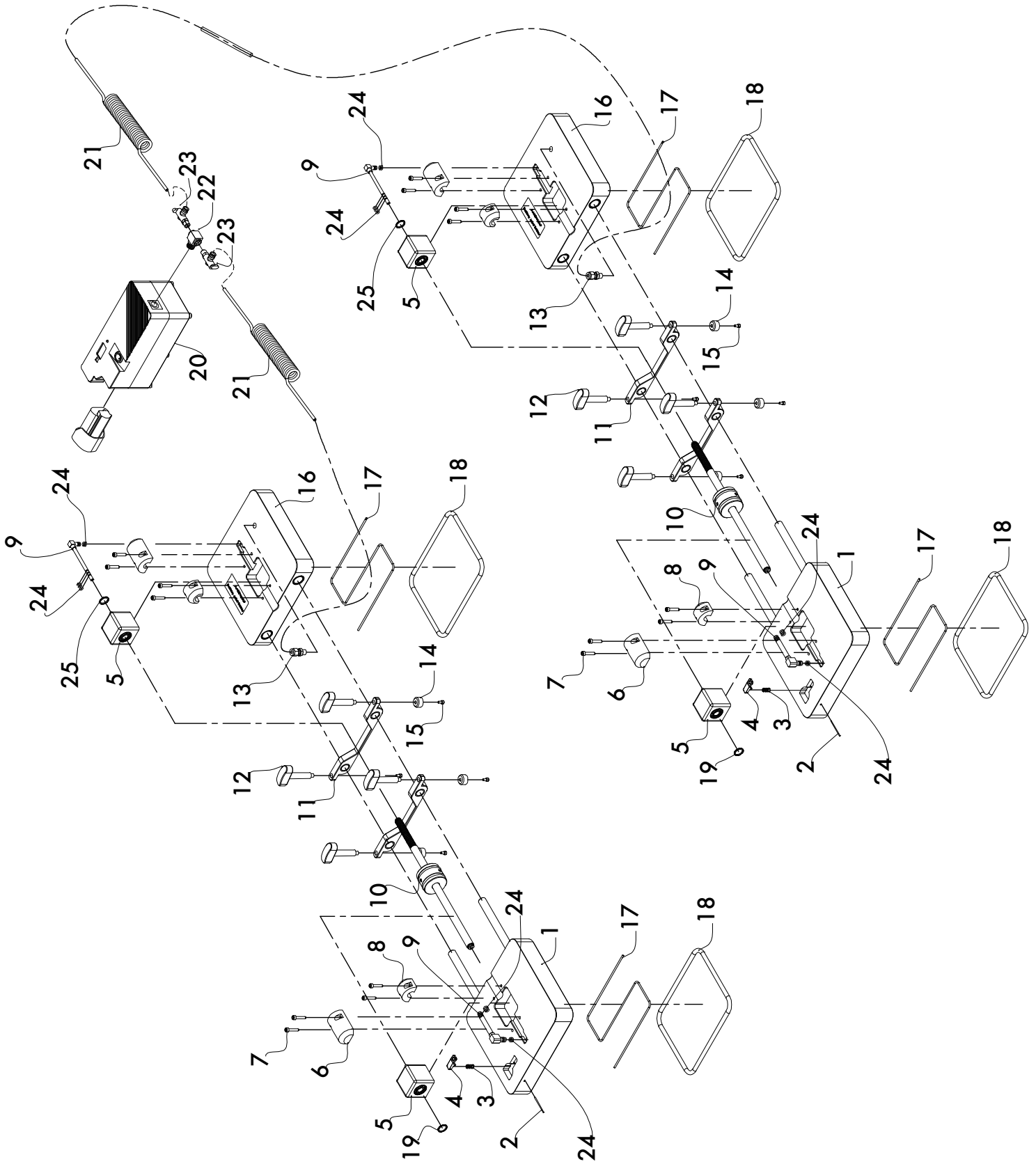
Information of the Battery Vacuum Pump:

- 🔧 Vacuum reservoir: 770 cm³
- 🔧 Weight: 1.88 kg | 4.15 lb

DIMENSIONS

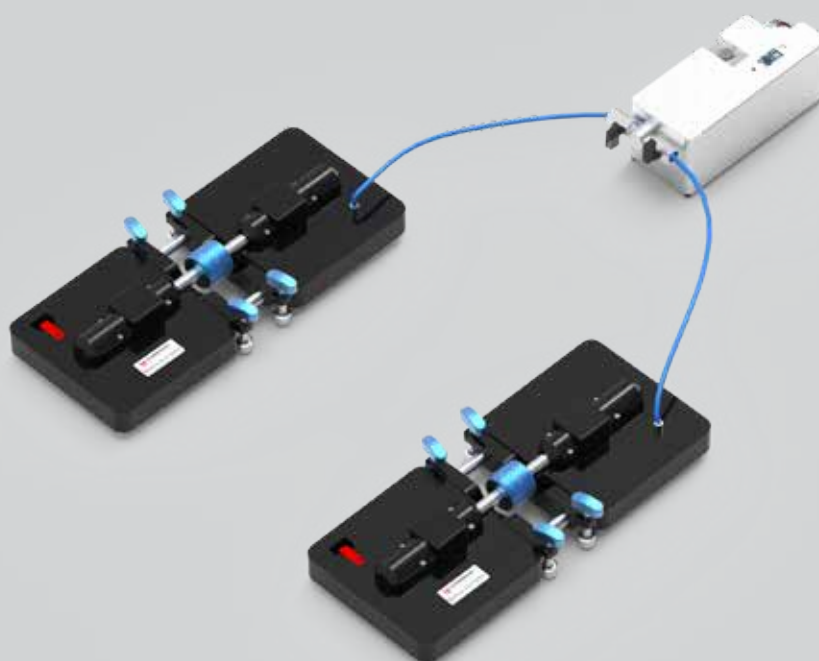


DRAWING



PARTS LIST

POS.	DESCRIPTION	Q'TY	POS.	DESCRIPTION	Q'TY
01	Plate with exhaust valve	02	14	Plastic piece	08
02	Pin Ø2 x 53	02	15	Bolt M4 x 8	08
03	Spring	02	16	Plate connect vacuum	02
04	Exhaust valve	02	17	Seal Ø2.5	04
05	Bearing holder	04	18	Sponge rubber seal foam	04
06	Long pad	04	19	Circlip Ø15	02
07	Bolt M5 x 25	16	20	Vacuum Pump & Vacuum Reservoir	01
08	Short pad	04	21	Spiral Hose Ø6	02
09	Elbow Male Connectors Ø7.5	04	22	Divide 1/4"	01
10	Main axle	02	23	Ball Valve 1/8"	02
11	Horizontal pad	04	24	Oring 4.47x1.78	20
12	Level adjust pad	08	25	Circlip Ø13	02
13	Connectors Male Tube Ø6 -1/8"	02			



02 SAFETY INSTRUCTIONS



GENERAL GUIDELINES

✦ Training

The operator must be trained and possess the necessary knowledge, skills, and expertise in all relevant industry and regulatory standards for operating the Aardwolf Battery Joint Setter in their geographical location.

✦ Manual Availability

Ensure the manual is available and understood by all operators.

✦ Wear Protective Gear

Always wear safety goggles, gloves, and protective footwear when operating the Battery Joint Setter.

✦ Inspect Before Use

Check the Battery Joint Setter for any visible damage, such as cracks, loose parts, or worn components. Do not use if damage is detected.

✦ Ensure Stable Surface

The materials should be placed evenly and balanced on the Battery Joint Setter to prevent tipping or instability during operation.

✦ Perform a Test Run

Always conduct a test operation with the Joint Setter before working with the actual materials to ensure proper functionality and safety.

✦ Keep Work Area Clear

Ensure the work area is free from obstacles, debris, and unauthorized personnel during operation.

✦ Disconnect After Use

After completing the task, turn off the Battery Joint Setter, disconnect the battery, and store the equipment in a safe, dry place.

03 USER INSTRUCTIONS

- 1 Open the protective carrying case and take out the joint setter.
- 2 Place the Battery Joint Setter onto the materials to be joined.
- 3 Connect the air hoses to the Battery Vacuum Pump and the Joint Setters by attaching the air hoses to the ball valves and quick connectors.
Note: A safe working vacuum level is maintained at all times. When the vacuum pressure level is low, the Vacuum Pump will activate. When the vacuum pressure level is high, the Vacuum Pump will turn off. The battery and pressure indicators are easily observed on the digital display.
- 4 Press the power button located on the Battery Vacuum Pump and observe the vacuum level. When the vacuum reaches -64 kPa (or when the green light on the battery vacuum pump stays on), the Joint Setter is ready to operate safely.
- 5 Open the valve on the air hose to supply vacuum to the vacuum bases.
- 6 Adjust the leveling knobs and ensure they are fitted snugly against the surface of the materials being joined.
Note: The four leveling knobs provide ultimate control over both sides of the seam.
- 7 Use the palms to roll the rollers on the main axles of the joint setter. At this point, the two materials will be pulled closer together.
- 8 When the materials are tightly joint as required, use a tool to check the flatness of the surface of the two material sheets to ensure they are precisely leveled. If the surfaces are not flush, adjust the leveling knobs to tighten the surfaces until they are even with each other.
- 9 After completing the joint between the surfaces of the two material sheets, turn the exhaust valve located on the surface of the vacuum bases to release the Battery Joint Setter from the materials.

04 MAINTENANCE

✦ Inspection

Regularly check for any signs of wear or damage on all parts.

✦ Cleaning

Wipe down surfaces, especially moving components, to remove dust, debris, or residue.

✦ Lubrication

Apply lubricant to moving parts, such as rollers and hinges, to ensure smooth operation. Use only recommended lubricants and avoid over-lubrication.

✦ Storage

Store in a dry area, preferably indoors, to prevent rust and corrosion.

✦ Replacement

Replace any damaged or worn parts promptly to maintain safety and functionality.



SCAN HERE

To see How to use
The Battery Joint Setter

05 WARRANTY



PRODUCT CHECK AND REPORTING

Upon receiving the product, the buyer should verify, based on the spare parts list and attached spare drawings, that all spare parts are intact and not lost during shipment. Any damages or losses must be officially reported to Aardwolf Industries within eight days of purchase.



WARRANTY INFORMATION

The Battery Joint Setter comes with a 12-month warranty from the date of purchase, following Aardwolf Industries's warranty policy.



WARRANTY EXCLUSIONS

The warranty coverage does not apply if:

- ✘ The user failed to comply with the instructions in the manual.
- ✘ Damages are due to inadequate maintenance and inspections.
- ✘ Damages are due to improper storage and/or usage.
- ✘ Repairs were performed by the user without our permission.
- ✘ Non-original spare parts were used.



DECLARATION OF CONFORMITY

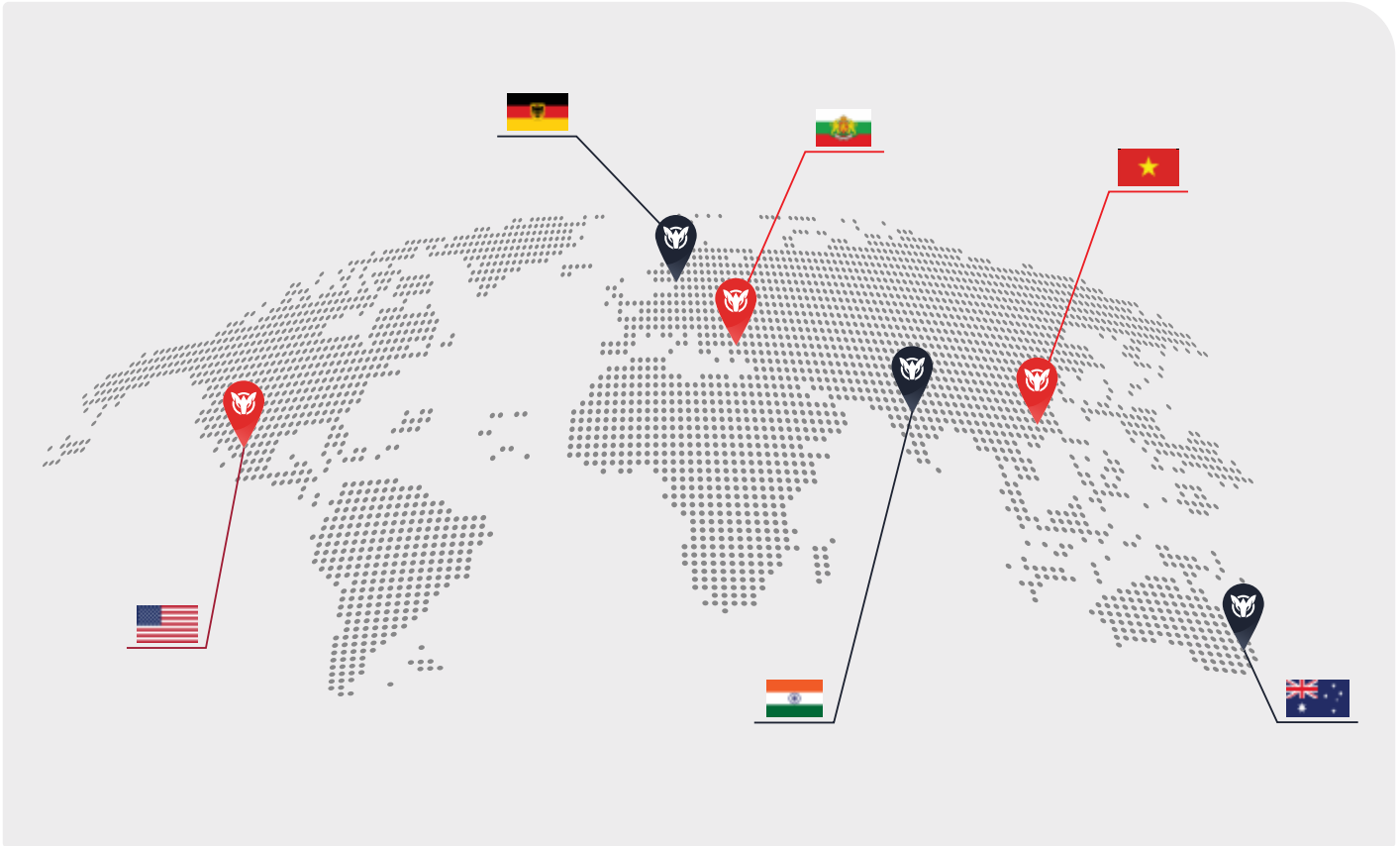
We declare that the Battery Joint Setter conforms to the following standards:

- ✘ The Machinery Directive 2006/42/EC
- ✘ Australian Standard 4991-2004

Note: It is the user's responsibility to comply with state or local laws. The end user is responsible for using the equipment safely, in the manner it is designed for, and within the unit's rated capacity.

WE PROVIDE

Simple, Reliable, Cost Saving And
Awesome Ideas For Your Business



FIND THE NEAREST AARDWOLF SERVICE CENTER

AUSTRALIA

1/5 Stanton Road, Seven Hills NSW 2147
Tel: 02 9838 8427
Email: enquiries@aardwolfaustralia.com
Web: www.aardwolfaustralia.com

BULGARIA

Str.Usta Kolio Ficheto 33
Tel: +359 887 933 754
Email: adrian@toolrange.com

GERMANY

Schulze-Delitzsch-Weg 2, 33175 Bad Lippspringe
Tel: 05252 8382830
Email: sales@toolrange.com.de

INDIA

Harmara Road, Industrial Area, Madanganj, Kishangarh,
District- Ajmer, Rajasthan India 305801
Tel: +91 73000 68444
Email: sales@aardwolf.co.in
Web: www.aardwolf.co.in

USA

9401 Norwalk Blvd, Santa Fe Springs, CA 90670
Tel: (562) 553-6050
Email: sales@aardwolfusa.com
Web: www.aardwolfusa.com

VIETNAM

1B, An Phu, Thuan An City, Binh Duong Province, Vietnam
Tel: +84 931 707 793
Email: info@aardwolf.com.au
Web: www.aardwolf.com.au

