

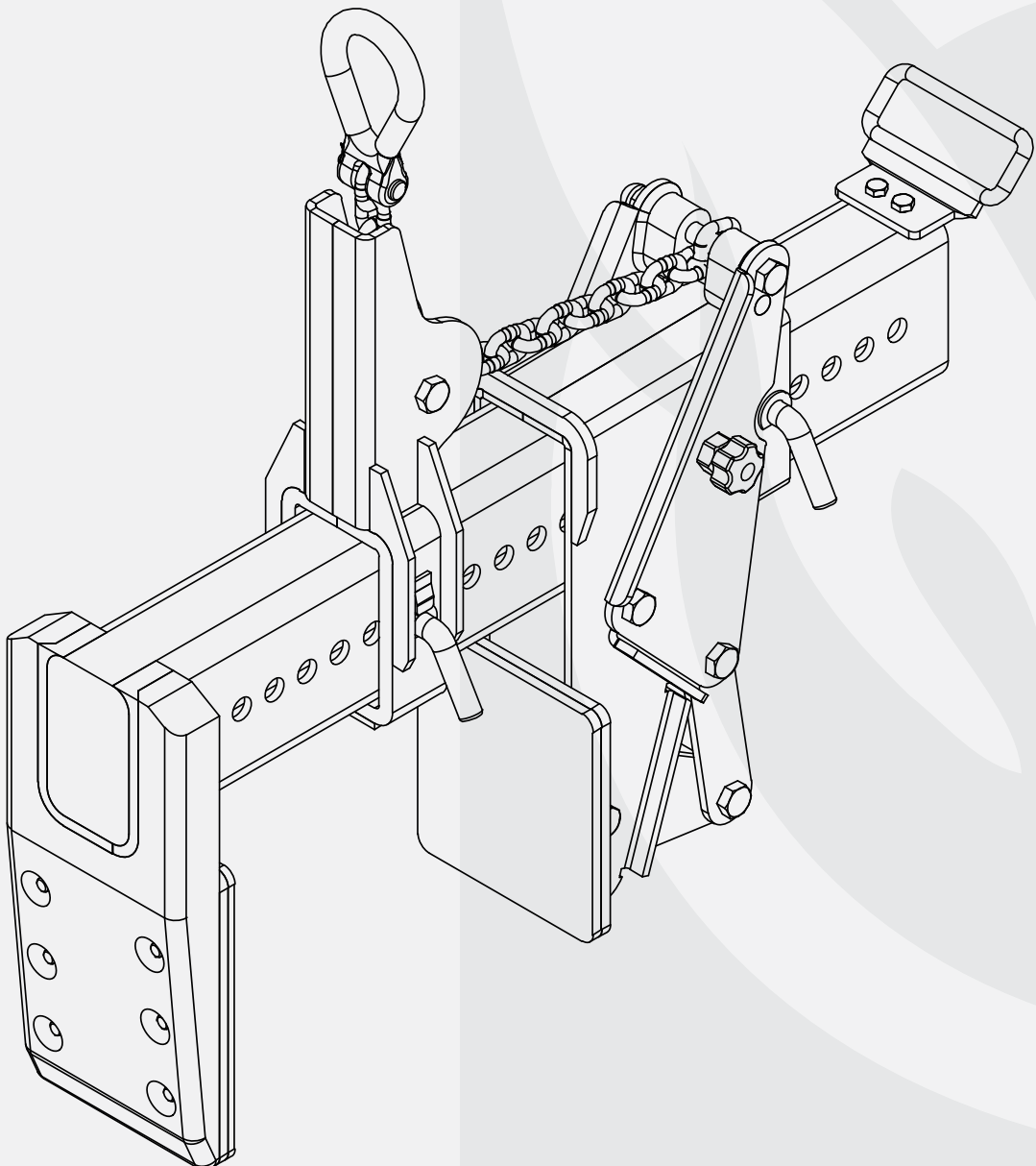


OWNER'S MANUAL

AARDWOLF

MONUMENT CLAMP/LIFTER AUTOMATIC

GPM1500A



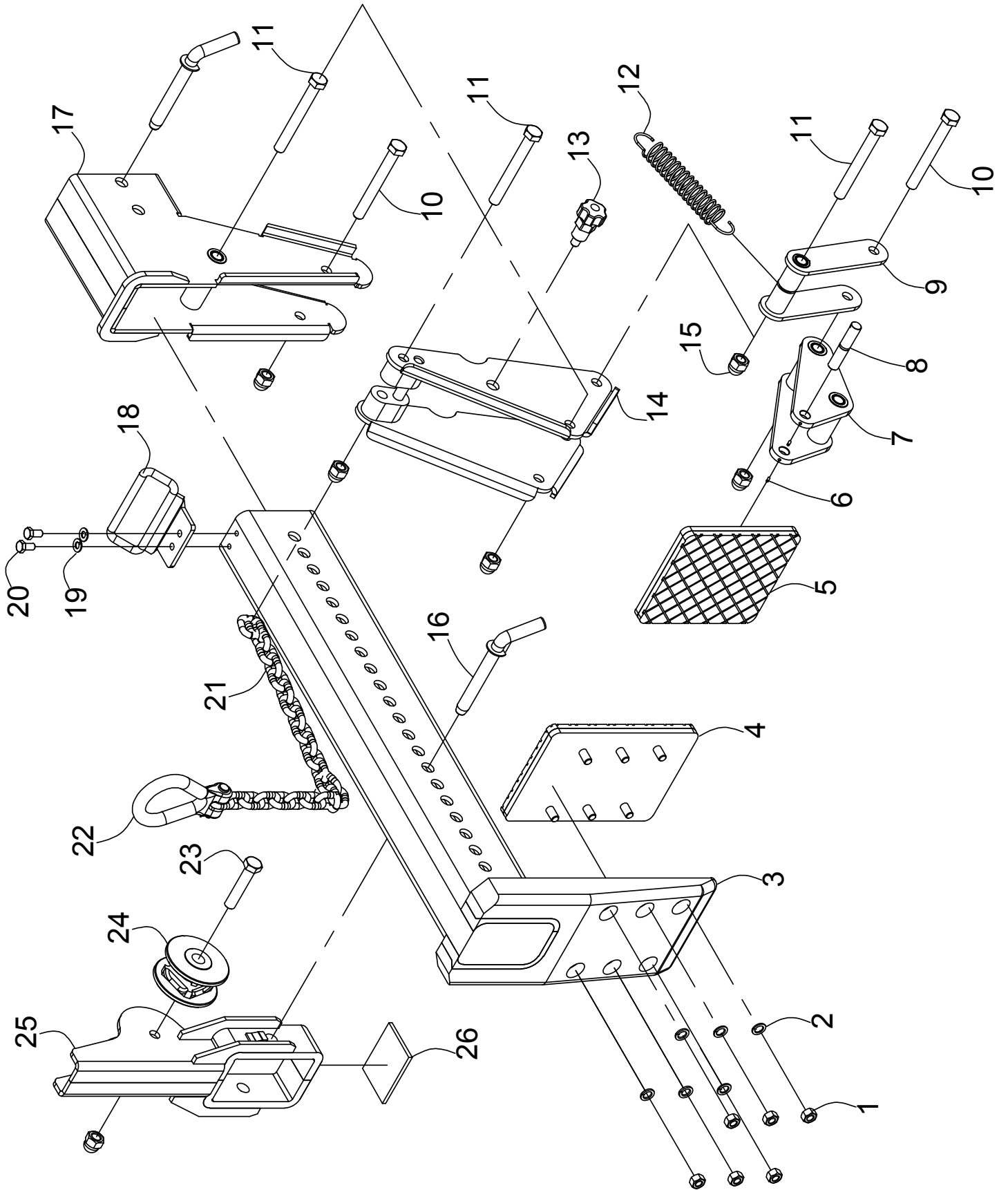
February, 2023

Works with any lifting device. The Aardwolf Monument Clamp/Lifter Automatic is ideal for lifting and setting concrete, stone, and marble building fascia. By means of a gravity controlled locking latch, the clamp automatically grips and releases the materials. It is useful for moving and setting heavy or awkward retaining wall blocks and slabs. The slim profile allows it to set material in tight places. The clamping jaw and the center of gravity are easily and quickly adjustable by means of the locking pins. The jaws of the lifter are lined with vulcanized rubber to ensure a safe and non-marking grip. The clamps are gravity controlled, which open when rested and close when lifted.

GENERAL SAFETY OPERATION

- Carefully consider all safety regulations and existing standards and codes in your country for hoisting operations.
- Permission to work with the Monument Lifter should only be given to people who are suitably trained, competent and acquainted with this operating manual and safety regulations.
- Inspect clamp. If the clamp is worn or damaged, do not use.
- Determine the weight of the slab to be lifted. Do not exceed W.L.L (Working Load Limit) shown on clamp. Slab thickness must be within grip range specified by the manufacturer
- Do a risk assessment of the material that is being lifted. The slab must be free of fractures and other defects that may cause the slabs to fall apart while being lifted.
- All personnel must stand clear of the load while it is being lifted or moved.
- The grip depends on friction. Check that the rubber pads are free from dirt, grease and other substances that may reduce their effectiveness.
- Do not lift wet slab. The grip depends on friction. Lifting wet slab may cause the rubber pads to lose their grip.
- Position the clamp so that it is square with the slab to be lifted, and in the centre of the slab so that the load is balanced.
- Make sure that slab is inserted to the full depth into the opening of the clamp.
- Take up slab slowly. A trial tensioning of load will usually indicate proper balance
- Do not lower clamp onto other slabs or material while lowering slab into racks, as clamp will release its load.
- It is important to ensure that regular examinations and inspections of lifting gear are undertaken to ensure maintenance is kept, and to verify that the equipment can continue to be safely
- Lifting gear inspections must be undertaken on a regular basis, by a person with adequate training, knowledge, skills and expertise.

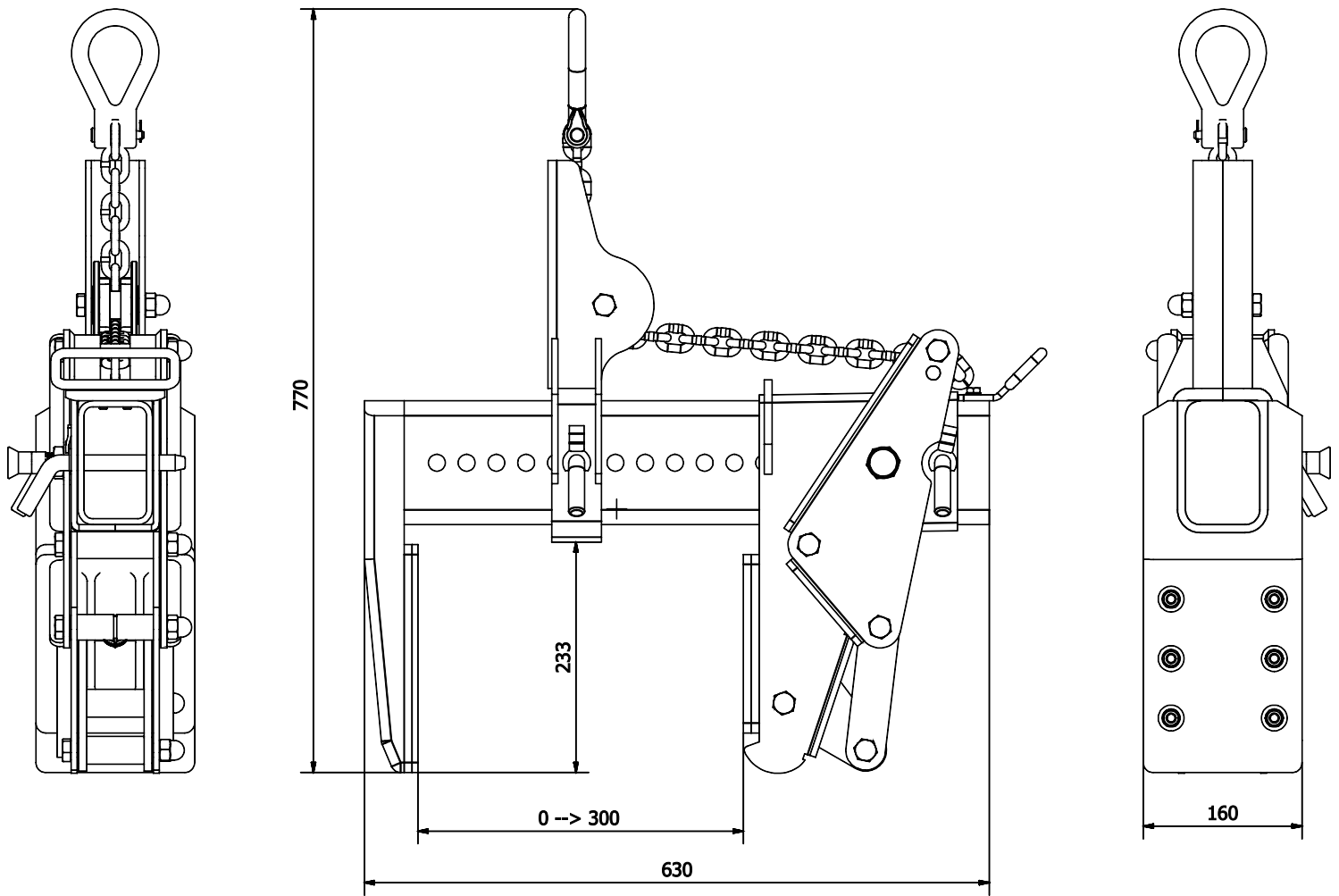
DRAWING LIST



PARTS LIST

POS.	CODE	DESCRIPTION	Q'TY
01	T001018	Nut M10	06
02	L006007	Spring Washer M10	06
03	GPM1500A-003	Body	01
04	GPM1000-003	Fixed Jaw	01
05	GPM1000A-005	Movable Jaw	01
06	B015010	Set Screw M4x10	02
07	GPM1500A-007	Triangle Intermediate Stage	01
08	GPM1500A-008	Pin	01
09	GPM1500A-009	Intermediate Stage	01
10	B015217	Bolt M14x100	02
11	B015218	Bolt M14x120	03
12	L004034	Extension Spring	01
13	B015059	Locking Pin 1	01
14	GPM1500A-014	Triangle Driving Link	01
15	T001038	Nut M14	06
16	GPM1500A-016	Locking Pin 2	02
17	GPM1500A-017	Movable Jaw Arm	01
18	GPM1500A-018	Handle	01
19	L006005	Spring Washer M8	02
20	B015171	Bolt M8x20	02
21	D020055	Linking Chain Ø8, L=500 mm	01
22	D020023	Shackle	01
23	B015215	Bolt M14x80	01
24	GPM1500A-024	Roller Chain	01
25	GPM1500A-025	Hanging Frame	01
26	C002095	Limit Rubber	01

DIMENSIONS



SPECIFICATION

GPM1500A	Metric	Imperial
Grip range	20 - 300 mm	1 - 12 in
Working load limit	1500 kg	3307 lb
Net weight	52 kg	115 lb
Gross weight	54 kg	119 lb
Packaging dimensions	700 x 195 x 440 mm	27.6 x 7.8 x 17.3 in

INSTRUCTIONS FOR USE:

Important!

In order to protect people from getting injured it is important to follow some general safety directions while using hoisting accessories.

- Read the operation manual carefully before you use hoisting accessories.
- Make sure that the operation manual is always available at the place where the hoisting accessories are used.
- Give permission to work with hoisting accessories only to people who are suitably trained and competent.
- Wear safety equipment, like helmet, gloves and safety boots.
- Never leave a lifted load unsupervised.
- Lift a load only as much as is really necessary.
- Do not get underneath the load and do not permit others to do so.
- Connections or individual parts of hoisting accessories should never be able to loosen by themselves.
- Hoisting accessories must be stored in a place where they are protected against weather conditions and aggressive substances.
- Defect hoisting accessories are no longer to be used.
- Repairs and checks are to be made only by qualified people.
- Position the clamp so that it is square with the slab to be lifted, and keep the bar bumper on centre of the stone.
- Ensure that the torque arm is sufficiently tightened.
- Slide the grips to the width of block to be picked up.
- With the Lifter resting on the load, and hoist tension released.
Raise the hoist to allow the Lifter pads to close onto load
- Pull the locking pin disengages from the locked open position. Lift and move the load to the desired location.

INSPECTIONS AND MAINTENANCE

There are two types of inspections - in-service and periodic.

IN-SERVICE:

A visual inspection prior to each use. This implies that prior to each lift, the user has a good look over the lifting clamp to ensure that there is no significant damage or wear, and that the working load limit tag or markings are fitted and limit legible. At this point, if any defects are noted, the lifting clamp should be withdrawn from service, and inspected by a competent person who can make a decision on whether to use, repair or discard the lifting clamp.

PERIODIC:

The lifting clamps should be checked and tested every 12 months by a competent person who has been trained and who can make a decision on whether to use, repair or discard the lifting clamp.

These inspections also need to be adequately documented and are mandatory in many countries. Always use original spare parts when carrying out repairs or maintenance.

DECLARATION OF CONFORMITY:

We declare that the lifter conforms with the following standards:

- The Machinery Directive 2006/42/EC
- Australian Standard 4991-2004.

NOTE:

It is the responsibility of the user to adapt to state or local laws. The end user is responsible to use the equipment safely in a manner that it is designed for and within the rated capacity of the unit.

WARRANTY

At the time of delivery it is necessary to check that the clamp has not been damaged during shipment. Any claims must be presented within 8 days of the date of delivery of the product. We grant you 12 months warranty on the Aardwolf Monument Clamp/Lifter Automatic, counted from the date of purchase.

The warranty coverage is not applicable if:

- The lifter is handled incorrectly during manoeuvring.
- The operator fails to comply with the instructions in this booklet.
- The lifter's maximum permissible capacity is exceeded.
- The specifications for slab thickness are not followed.
- Damages are due to inadequate maintenance and inspections.
- Damage is due to improper storage.
- Repairs were performed by the user without our permission.
- Non-original spare parts were used.



WE ARE PROVIDING

SIMPLE, RELIABLE, COST SAVING
AND **AWESOME IDEAS** FOR YOUR BUSINESS



AARDWOLF PRODUCT VIDEO
www.youtube.com/user/AardwolfGroup



FIND THE AARDWOLF SERVICE CENTRE NEAR YOU

AUSTRALIA

1/5 Stanton Road, Seven Hills NSW 2147

Tel: 02 9838 8427

www.aardwolfaustralia.com Email: enquiries@aardwolfaustralia.com

BULGARIA

Str.Usta Kolio Ficheto 33

Tel: +359 887 933 754

Email: adrian@toolrange.com

INDIA

Harmara Road, Industrial Area, Madanganj, Kishangarh, District- Ajmer, Rajasthan India 305801

Tel: +91 73000 68444

Web: www.aardwolf.co.in

Email: sales@aardwolf.co.in

GERMANY

Schulze-Delitzsch-Weg 2, 33175 Bad Lippspringe

Tel: 05252 8382830

Email: sales@aardwolf.com.de

USA

9401 Norwalk Blvd, Santa Fe Springs, CA 90760

Tel: (562) 553-6050

Web: www.aardwolfusa.com

Email: sales@aardwolfusa.com

VIETNAM

1B, An Phu, Thuan An City, Binh Duong Province, Vietnam

Tel: +84 931 707 793

Web: www.aardwolf.com.au

Email: info@aardwolf.com.au