

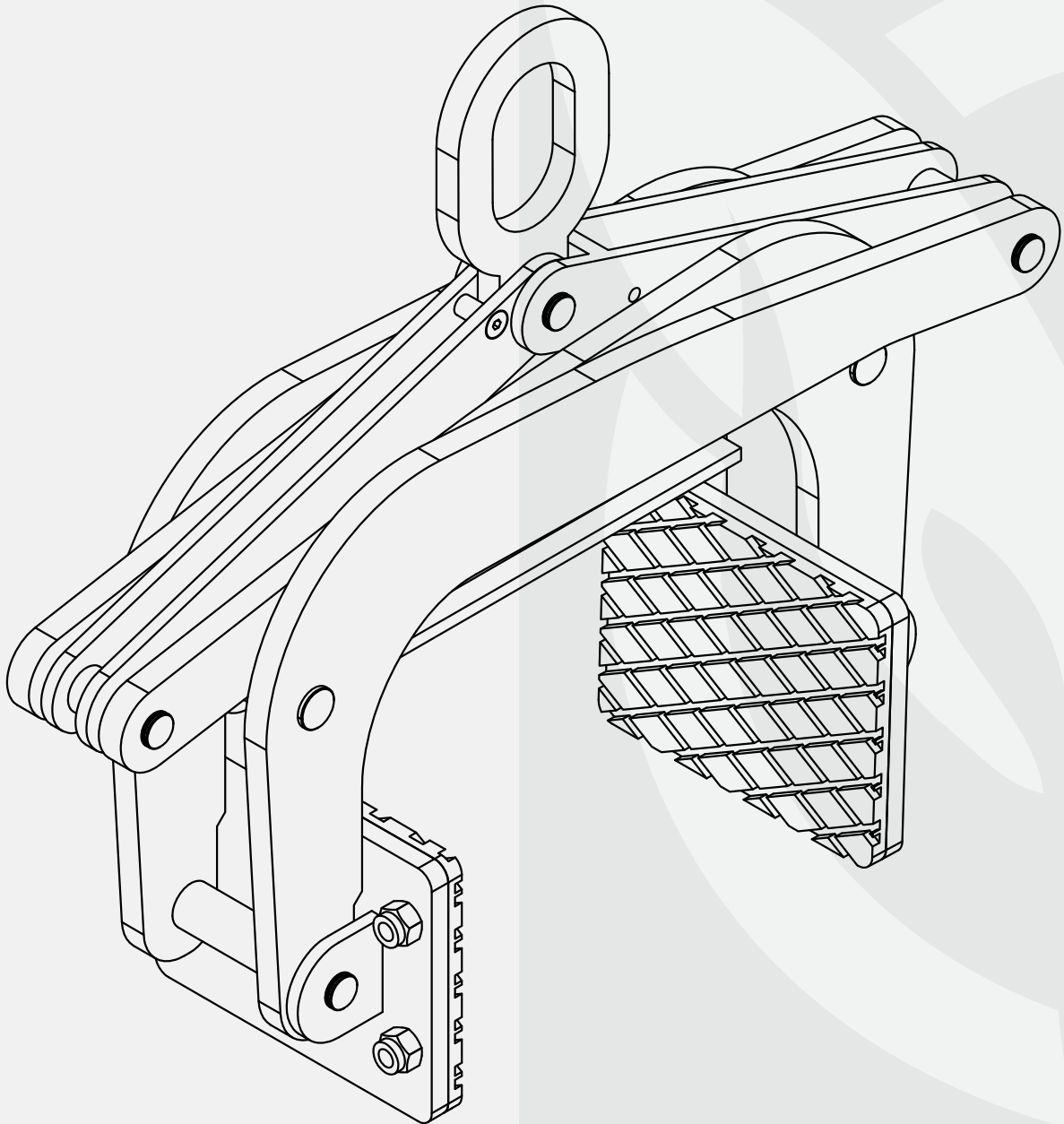


OWNER'S MANUAL

AARDWOLF

SCISSOR CLAMP LIFTER

ASL300



The Aardwolf Scissor Clamp Lifter is equipped with a rubber contact pad for the safe handling of materials. By means of a gravity controlled locking latch, the clamp automatically grips and releases the materials.

Suitable for lifting marble and granite slabs, tombstones, concrete barriers, curbs (kerbs) and median walls.

GENERAL SAFETY OPERATIONS

- Carefully consider all safety regulations and existing standards and codes in your country for hoisting operations.
- Permission to work with the Scissor Lifter should only be given to people who are suitably trained, competent and acquainted with this operating manual and safety regulations.
- Inspect clamp. If the clamp is worn or damaged, do not use.
- Select proper size clamp for the job. Determine the weight of the slab to be lifted. Do not exceed working load limit shown on clamp. Slab thickness must be within grip range specified by the manufacture.
- Do a risk assessment of the material that is being lifted.
- The slab must be free of fractures and other defects that may cause the slabs to fall apart while being lifted.
- All personnel must stand clear of the load while it is being lifted or moved.
- The grip depends on friction. Check that the rubber pads are free from dirt, grease and other substances that may reduce their effectiveness.
- Do not lift wet slab. The grip depends on friction. Lifting wet slab may cause the rubber pads to lose their grip.
- Loads consisting of more than one piece should only be lifted if they are tightly combined into one unit.
- Position the clamp so that it is square with the slab to be lifted, and in the centre of the slab so that the load is balanced.
- Make sure that slab is inserted to the full depth into the opening of the clamp.
- Take up slab slowly. A trial tensioning of load will usually indicate proper balance.
- Do not lower clamp onto other slabs or material while lowering slab into racks, as clamp will release its load.

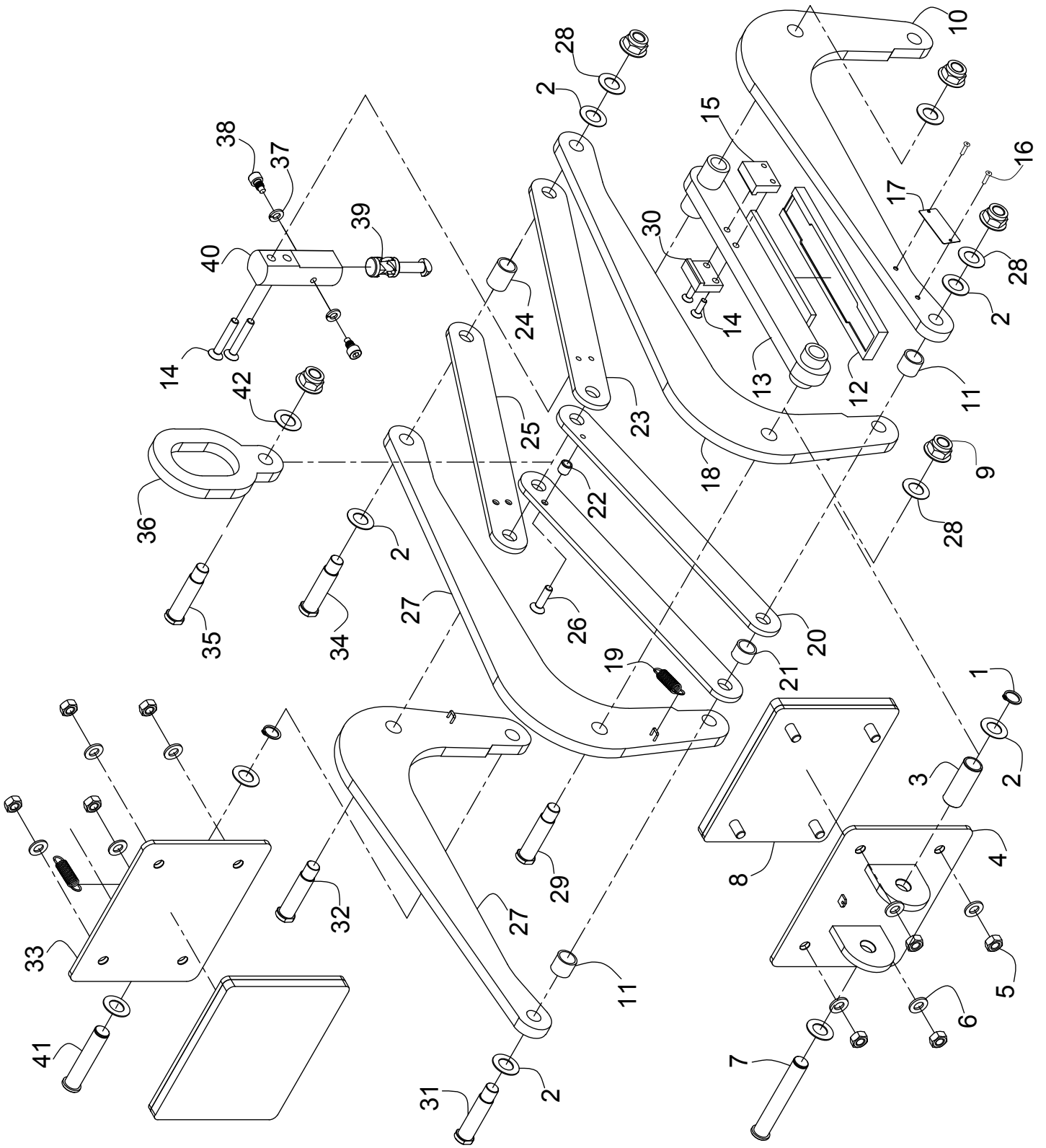
GENERAL SAFETY OPERATIONS

Important! In order to protect people from getting injured it is important to follow some general safety directions while using hoisting accessories.

- Read the operation manual carefully before you use hoisting accessories.
- Make sure that the operation manual is always available at the place where the hoisting accessories are used.
- Give permission to work with hoisting accessories only to people who are suitably trained and competent.
- Wear safety equipment, like helmet, gloves and safety boots.
- Never leave a lifted load unsupervised.
- Lift a load only as much as is really necessary.
- Do not get underneath the load and do not permit others to do so.
- Connections or individual parts of hoisting accessories should never be able to loosen by themselves.
- Hoisting accessories must be stored in a place where they are protected against weather conditions and aggressive substances.
- Defect hoisting accessories are no longer to be used.
- Repairs and checks are to be made only by qualified people.
- It is important to ensure that regular examinations and inspections of lifting gear are undertaken to ensure maintenance is kept, and to verify that the equipment can continue to be safely used.
- Lifting gear inspections must be undertaken on a regular basis, by a person with adequate training, knowledge, skills and expertise.



DRAWING LIST



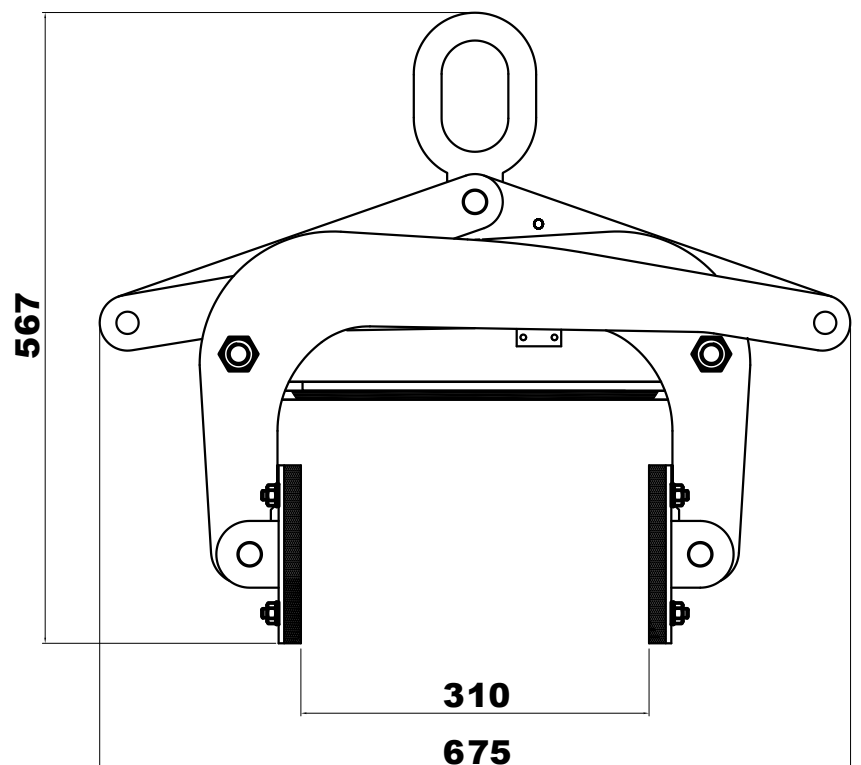
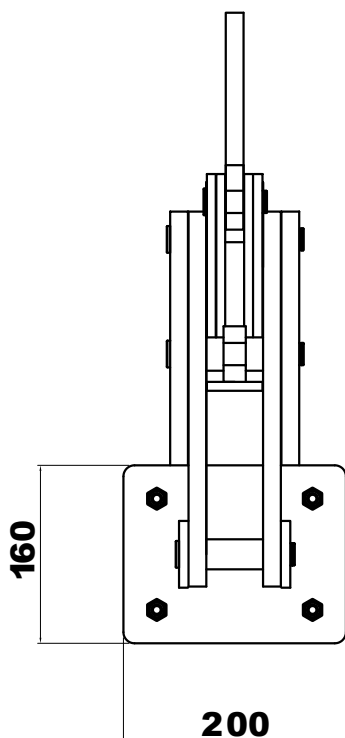
PARTS LIST

POS.	CODE	DESCRIPTION	Q'TY
01	P001019	External Circlip Ø20	02
02	L006057	Brass Washer Ø20.5	010
03	ASL200-003	Sleeving_1	01
04	ASL200-004	Jaw Bracket_1	01
05	T001018	Nut M10	08
06	L006025	Plain Washer M10	08
07	ASL200-007	Pin_1	01
08	ASL105-008	Jaw Rubber	02
09	T001039	Nut M16	05
10	ASL200-010	Lower Arm_1	01
11	ASL200-011	Sleeving_2	02
12	C002035	Limit Rubber	01
13	ASL300-013	Cross Bar	01
14	B015044	Hexagon Socket Countersunk M8x50	02
15	ASL200-015	Locking Base_1	01
16	L001004	Pop Rivet Ø3.2	02
17	T004034	Label	01
18	ASL200-018	Lower Arm_2	01
19	L004055	Jaw Spring	02
20	ASL300-020	Upper Arm_1	01
21	ASL200-021	Sleeving_3	01
22	ASL200-022	Sleeving_4	01
23	ASL300-023	Upper Arm_2	01
24	ASL200-024	Sleeving_5	01
25	ASL300-025	Upper Arm_3	01
26	B015043	Hexagon Socket Countersunk M8x40	01
27	ASL200-027	Lower Arm_3	02

PARTS LIST

POS.	CODE	DESCRIPTION	Q'TY
28	L006036	Plain Washer M16	05
29	ASL200-029	Pin_2	01
30	ASL200-030	Locking Base_2	01
31	ASL200-031	Pin_3	01
32	ASL200-032	Pin_4	01
33	ASL200-033	Jaw Bracket_2	01
34	ASL200-034	Pin_5	01
35	ASL200-035	Pin_6	01
36	ASL200-036	Hook	01
37	L006005	Spring Washer M8	02
38	B015092	Socket Head Cap Screw M8x20	02
39	ASL125-032	Locking Pin	01
40	ASL200-040	Locking Body	01
41	ASL200-041	Pin_7	01

DIMENSIONS



SPECIFICATIONS

ASL300	Metric	Imperial
Grip range	150 - 300 mm	6 - 12 in
Working load limit	1500 kg	3307 lb
Net weight	48 kg	106 lb
Gross weight	51 kg	112 lb
Packaging dimensions	700 x 230 x 480 mm	27.6 x 9.1 x 18.9 in

FEATURES

- Auto locks and unlocks
- Long-lasting, high friction replaceable Polyurethane gripping pads
- Protective rubber-lined bar prevents the material from chipping

INSTRUCTIONS FOR USE

- Operating personnel must stand so that they always have a full view of raising/lowering movements of the lifting equipment and its load.
- Move top of slab out from pack of slabs by means of pinch bar and wedge, allowing enough room for back plate of clamp to pass between slab and pack of slabs. Do not move top of slab pass center of balance, keep slab in inclined position.
- Position the clamp squarely and in the centre of the slab so that the load is balanced.
- Make sure that the slab is inserted full depth into the opening of the clamp.
- Release the locking latch so that the jaws will lock onto the slab when the lifting cable is raised.
- Lift slab slowly to ensure load is balanced.
- **Warning!** Before lowering the load, make sure that there are no obstructions that the load or the clamp could unintentionally rest on. In this event the clamp can drop the load.
- **Important:** Carefully observe the Safety instructions supplied with the lifting clamp.

INSPECTIONS AND MAINTENANCE

There are two types of inspections - in-service and periodic.

In-service:

A visual inspection prior to each use. This implies that prior to each lift, the user has a good look over the lifting clamp to ensure that there is no significant damage or wear, and that the working load limit tag or markings are fitted and limit legible. At this point, if any defects are noted, the lifting clamp should be withdrawn from service, and inspected by a competent person who can make a decision on whether to use, repair or discard the lifting clamp.

Periodic:

The lifting clamps should be checked and tested every 12 months by a competent person who has been trained and who can make a decision on whether to use, repair or discard the lifting clamp. These inspections also need to be adequately documented and are mandatory in many countries. Always use original spare parts when carrying out repairs or maintenance.

CE – Declaration of conformity:

we declare that the lifter is in conformity with the following standard: The Machinery Directive 2006/42/EC.

Note: It is the responsibility of the user to adapt to state or local laws. The end user is responsible for using the equipment safely in the manner it is designed for and within the rated capacity of the unit.

WARRANTY

At the time of delivery it is necessary to check that the clamp has not been damaged during shipment. Any claims must be presented within eight days of the date delivery of the product. We grant you 12 months warranty on the Aardwolf Scissor Lifter, counted from the date of purchase.

The warranty coverage is not applicable if:

- The lifter is handled incorrectly during manoeuvring.
- The operator fails to comply with the instructions in this booklet.
- The lifter's maximum permissible capacity is exceeded.
- The specifications for slab thickness are not followed.
- Damages are due to inadequate maintenance and inspections.
- Damage is due to improper storage.
- Repairs were performed by the user without our permission.
- Non-original spare parts were used.



WE ARE PROVIDING

SIMPLE, REALIABLE, COST SAVING
AND AWESOME IDEAS FOR YOUR BUSINESS



AARDWOLF PRODUCT VIDEO
www.youtube.com/user/AardwolfGroup



FIND THE AARDWOLF SERVICE CENTRE NEAR YOU

AUSTRALIA

1/5 Stanton Road, Seven Hills NSW 2147

Tel: 02 9838 8427

www.aardwolfaustralia.com Email: enquiries@aardwolfaustralia.com

BULGARIA Str.Usta Kolio Ficheto 33 Tel: +359 887 933 754

INDIA

Harmara Road, Industrial Area, Madanganj, Kishangarh, District- Ajmer, Rajasthan India 305801

Tel: +91 73000 68444

Web: www.aardwolf.co.in

Email: sales@aardwolf.co.in

GERMANY

Schulze-Delitzsch-Weg 2, 33175 Bad Lippspringe

Tel: 05252 8382830

USA

9401 Norwalk Blvd, Santa Fe Springs, CA 90670

Tel: (562) 553-6050

Web: www.aardwolfusa.com

Email: sales@aardwolfusa.com

VIETNAM

1B, An Phu, Thuan An City, Binh Duong Province, Vietnam

Tel: +84 931 707 793

Web: www.aardwolf.com.au

Email: info@aardwolf.com.au