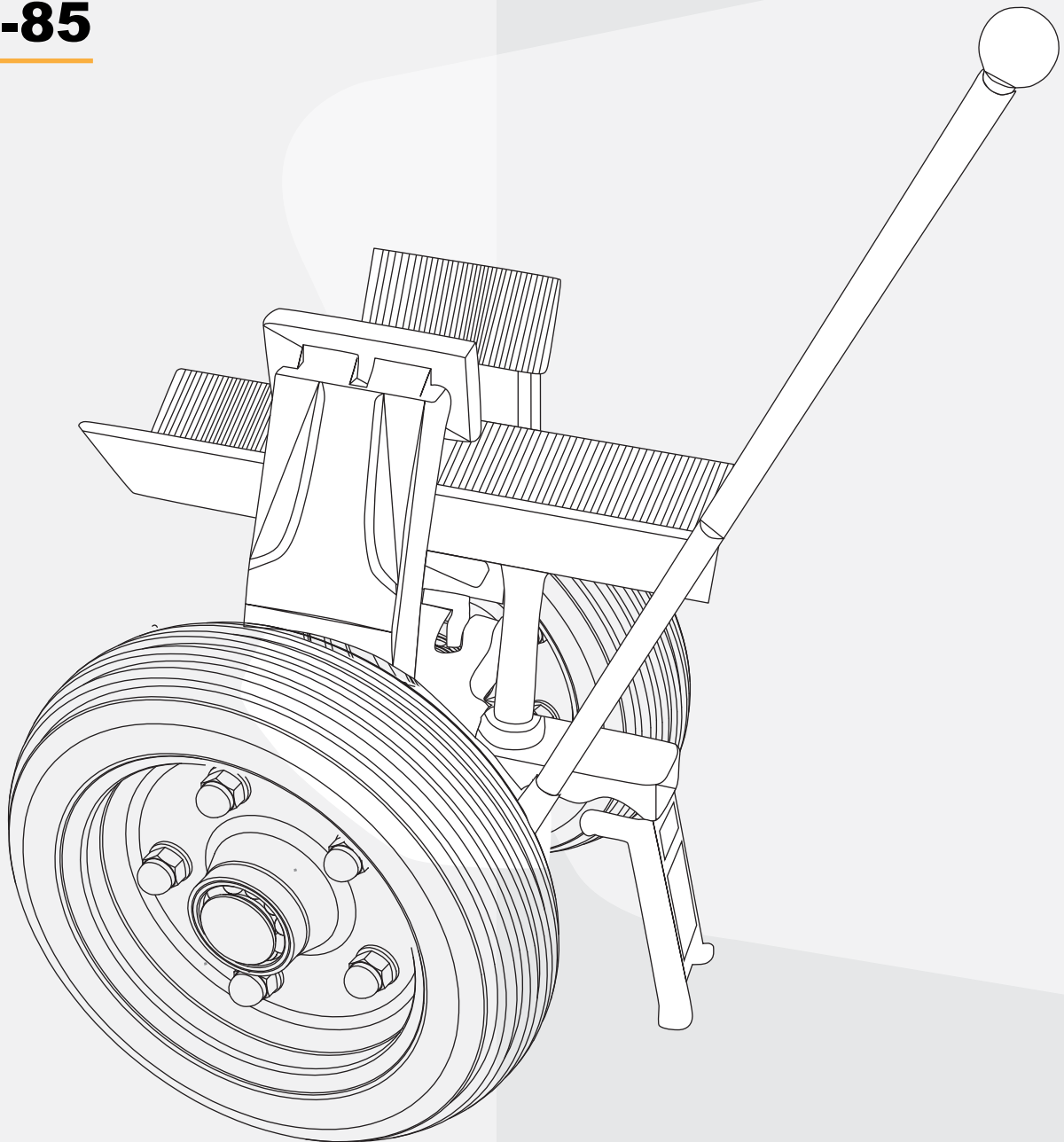




OWNER'S MANUAL

SELF LOCKING **TROLLEY**

SL-85



SELF LOCKING TROLLEY - SL85

The automatic clamping feature allows the trolley to move and transport heavy slab materials in a flexible and easy manner. Pneumatic wheels with a high grip meet the demand for transport on every terrain from even to rough.

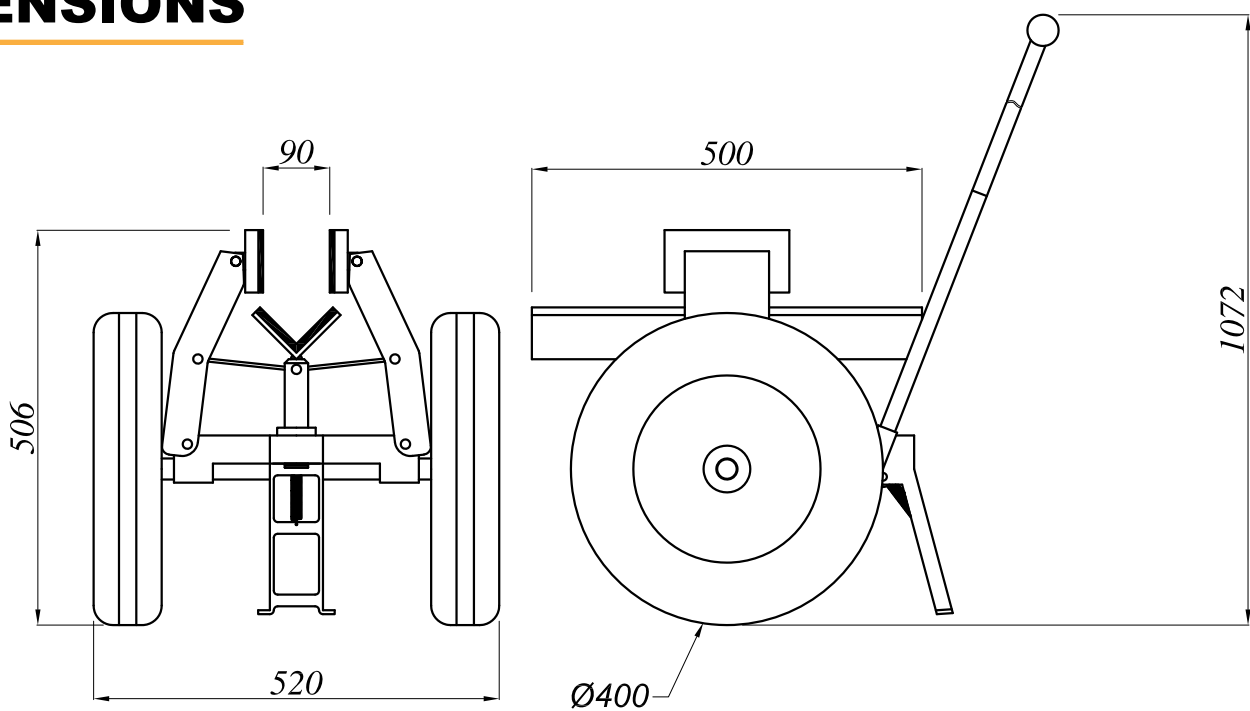
FEATURES

- Grips material automatically and securely
- Clamping supports and base are rubber padded
- Easily moves the materials

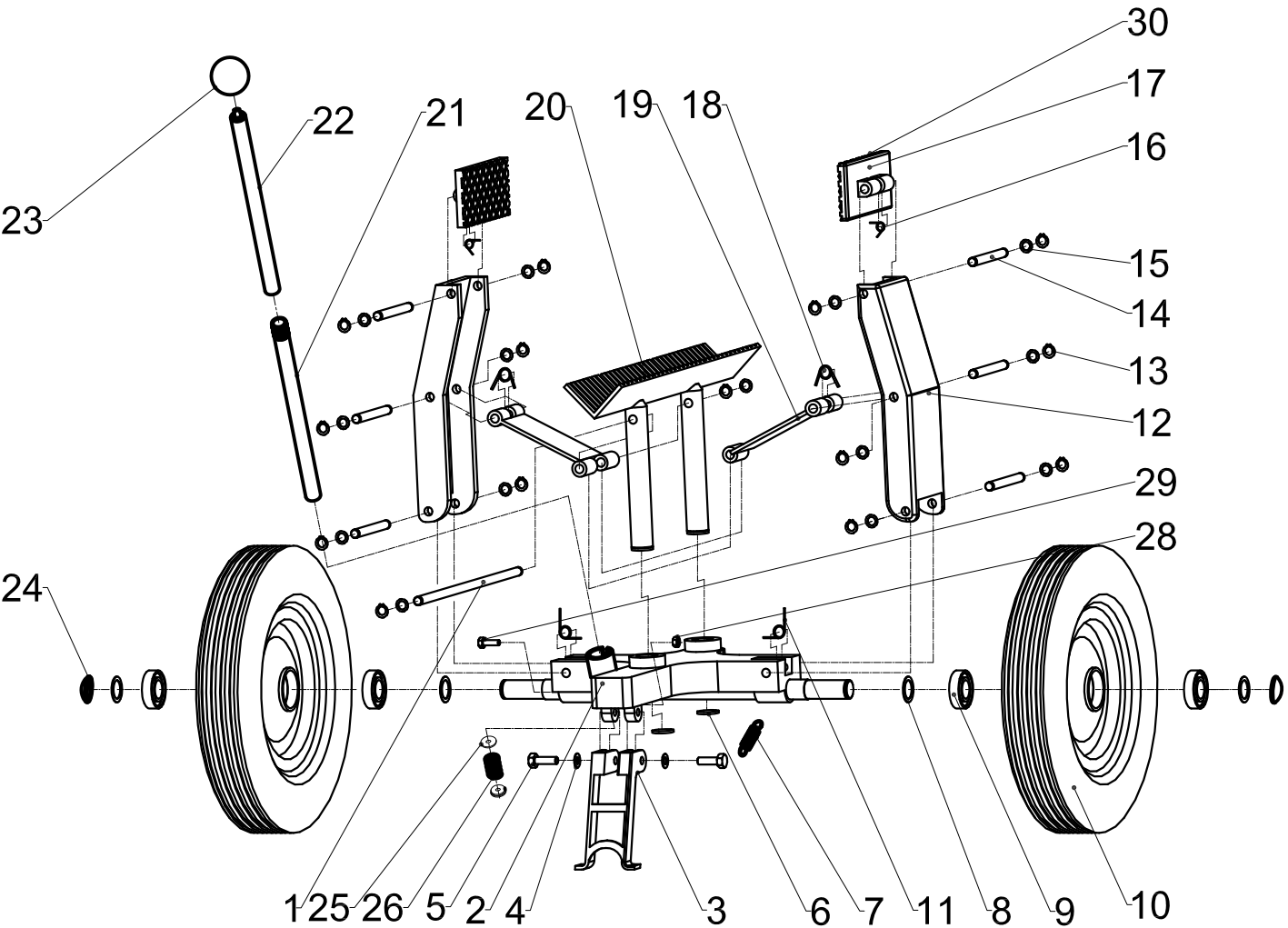
SPECIFICATION

SL - 85	Metric	Imperial
Grip range	0 - 85 mm	0 - 3"
Rubber wheel	400 mm	15.7"
Support plate channel	500 mm	19.7"
Working load limit	400 kg	882 lb
Net weight	26 kg	57 lb
Packaging dimension	540x500x520 mm	21.3"x19.7"x20.5"

DIMENSIONS



DRAWING LIST



PARTS LIST

CODE	POS.	DESCRIPTION	QTY.
SL85 - 001	1	Center pin	01
SL85 - 002	2	Base	01
SL85 - 003	3	Foot	01
SL85 - 004	4	Washer Ø10	02
SL85 - 005	5	Hexagon Bolt M10x20	02
SL85 - 006	6	Circlip Ø30	02
SL85 - 007	7	Foot spring	01
SL85 - 008	8	Copper washer Ø25	04
SL85 - 009	9	Bearing 6205	04
SL85 - 010	10	Wheel 4.00-8	02
SL85 - 011	11	Bottom spring	02
SL85 - 012	12	Arm	02
SL85 - 013	13	Circlips Ø12	14
SL85 - 014	14	Arm pin	06
SL85 - 015	15	Copper washer Ø12	14

CODE	POS.	DESCRIPTION	QTY.
SL85 - 016	16	Top spring	02
SL85 - 017	17	Jaw	02
SL85 - 018	18	Middle spring	02
SL85 - 019	19	Connecting rod	02
SL85 - 020	20	Base load plate	01
SL85 - 021	21	Bottom handle (*)	01
SL85 - 022	22	Top handle (*)	01
SL85 - 023	23	Rubber handle (*)	01
SL85 - 024	24	Dome axle caps Ø25	02
SL85 - 025	25	Limit washer Ø24 (*)	02
SL85 - 026	26	Compression spring (*)	01
SL85 - 028	28	Hexagon Nut M5	01
SL85 - 029	29	Hexagon Bolt M5x40	01
SL85 - 030	30	Rubber Pad	02

(*) Part universal for all Aardwolf Selflocking Trolley
When ordering, please give number of spare - part (code number) plus type of Selflocking Trolley.
For example: SL85 - 006 , QTY 02
 SL85 - 021 , QTY 01

WARRANTY & DISCLAIMER

1. Warranty

After receiving the goods, it is strongly recommended to the buyer to check for sure, based on the spare part list and spare drawing attached with the goods, that the spare parts has not been damaged or lost during shipment. Any damages or losses must be officially claimed to Aardwolf Industries LLC's within 8 days since the date of goods receipts.

This handler is granted a 12-month warranty based on Aardwolf Industries LLC's warranty policy since the date of purchase.

The warranty coverage is not applicable:

- The clamp is handled incorrectly during manoeuvring.
- The operator fails to comply with the instructions in this booklet.
- The clamp's maximum permissible capacity is exceeded.
- The specifications for slab thickness are not followed.
- Damages are due to inadequate maintenance and inspections.
- Damage is due to improper storage.
- Repairs were performed by the user without our permission.
- Non-original spare parts were used.

2. Disclaimer

Aardwolf Industries LLC's warranty does not cover the incorrect assembly and misuse of Portable Gantry Crane, the lack of maintenance and repair of lifter as scheduled by the manufacturer, the operation carried out by non-competent or non-permission operator or non-original spare parts used or installed.

WE ARE PROVIDE

SIMPLE, REALIABLE, COST SAVING
AND **AWESOME IDEAS** FOR YOUR BUSINESS



SCAN ME TO SEE
PRODUCTS VIDEO



CONTACT US

sales@aardwolf.com.au | www.aardwolf.com.au

