

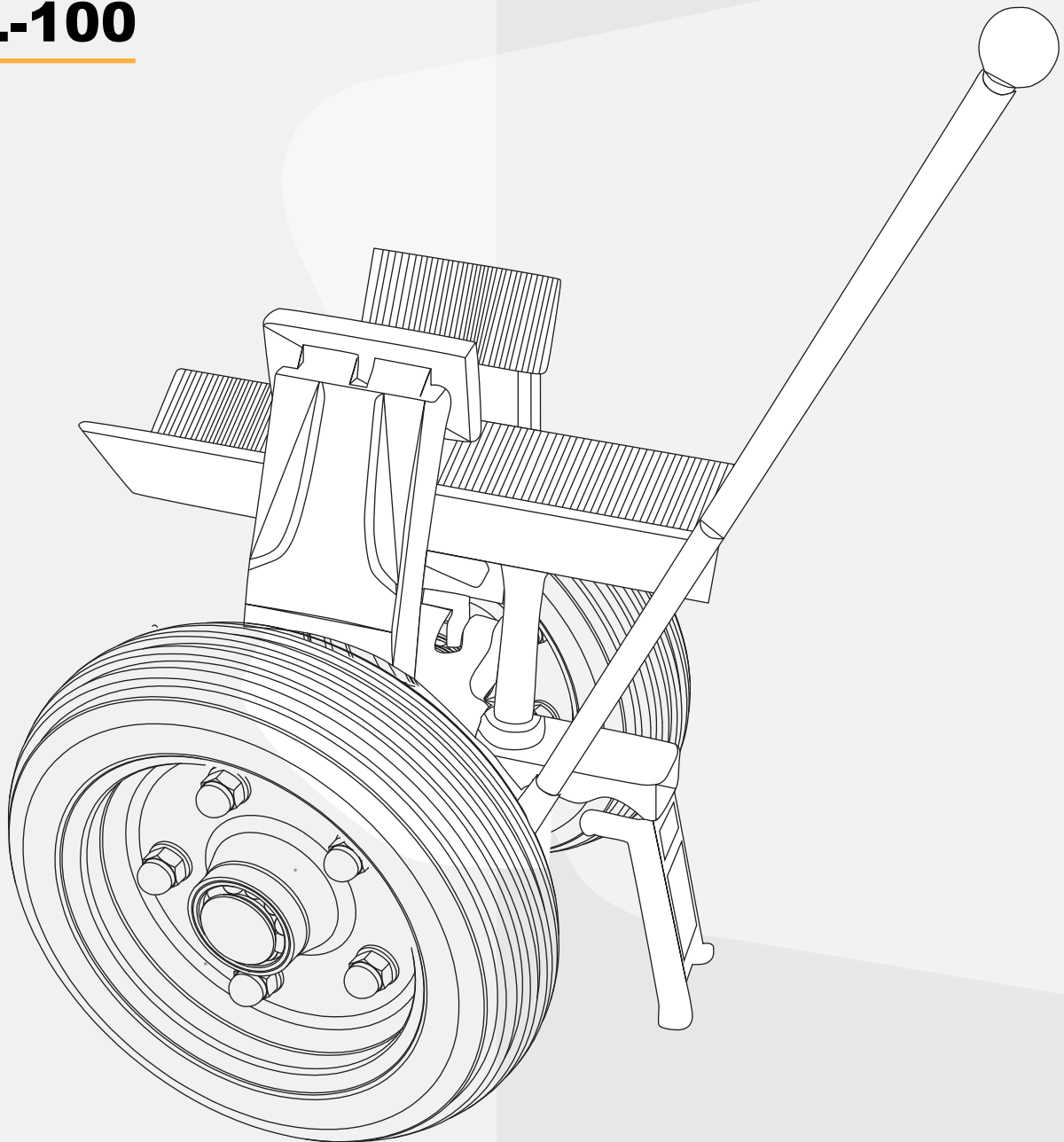


OWNER'S MANUAL

SELF LOCKING

TROLLEY

SL-100



SELF LOCKING TROLLEY - SL100

The automatic clamping feature allows the trolley to move and transport heavy slab materials in a flexible and easy manner. Pneumatic wheels with a high grip meet the demand for transport on every terrain from even to rough.

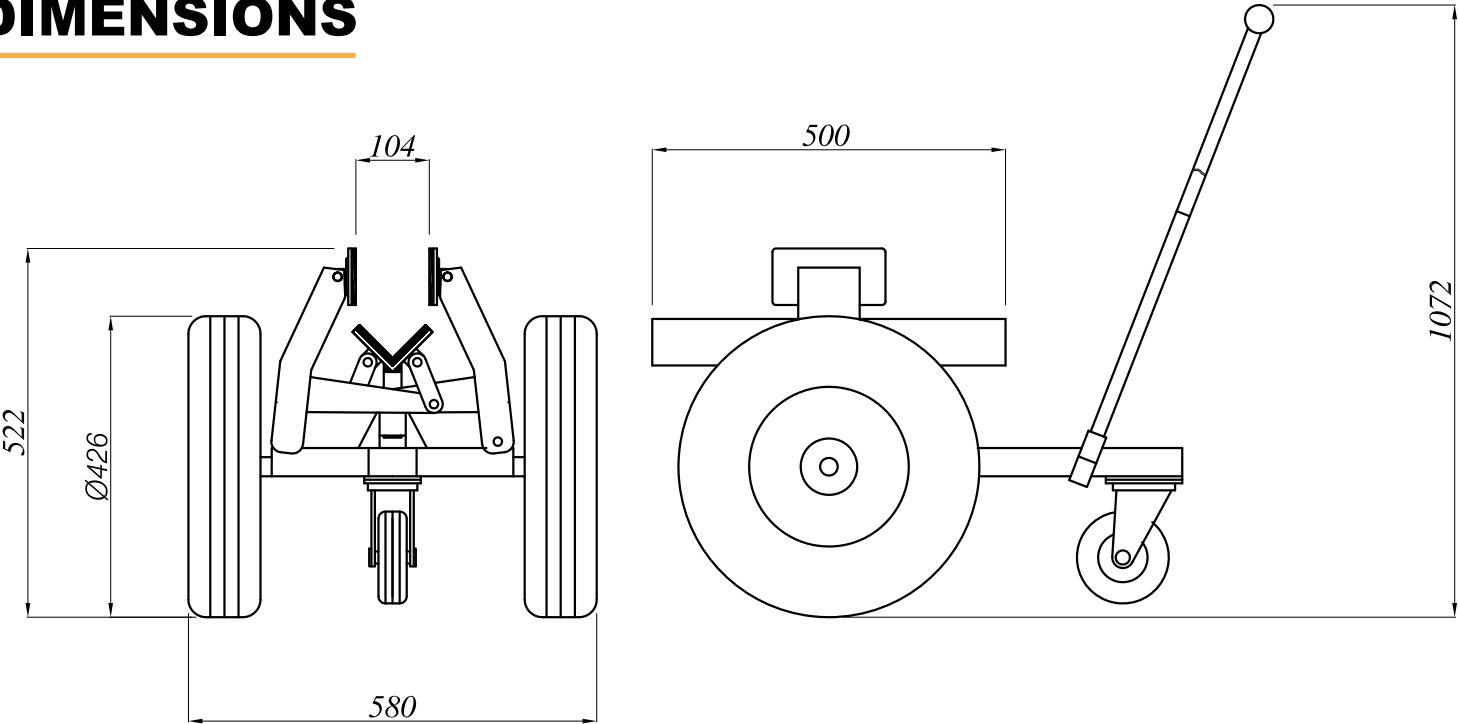
FEATURES

- Grips material automatically and securely
- Clamping supports and base are rubber padded
- Easily moves the materials

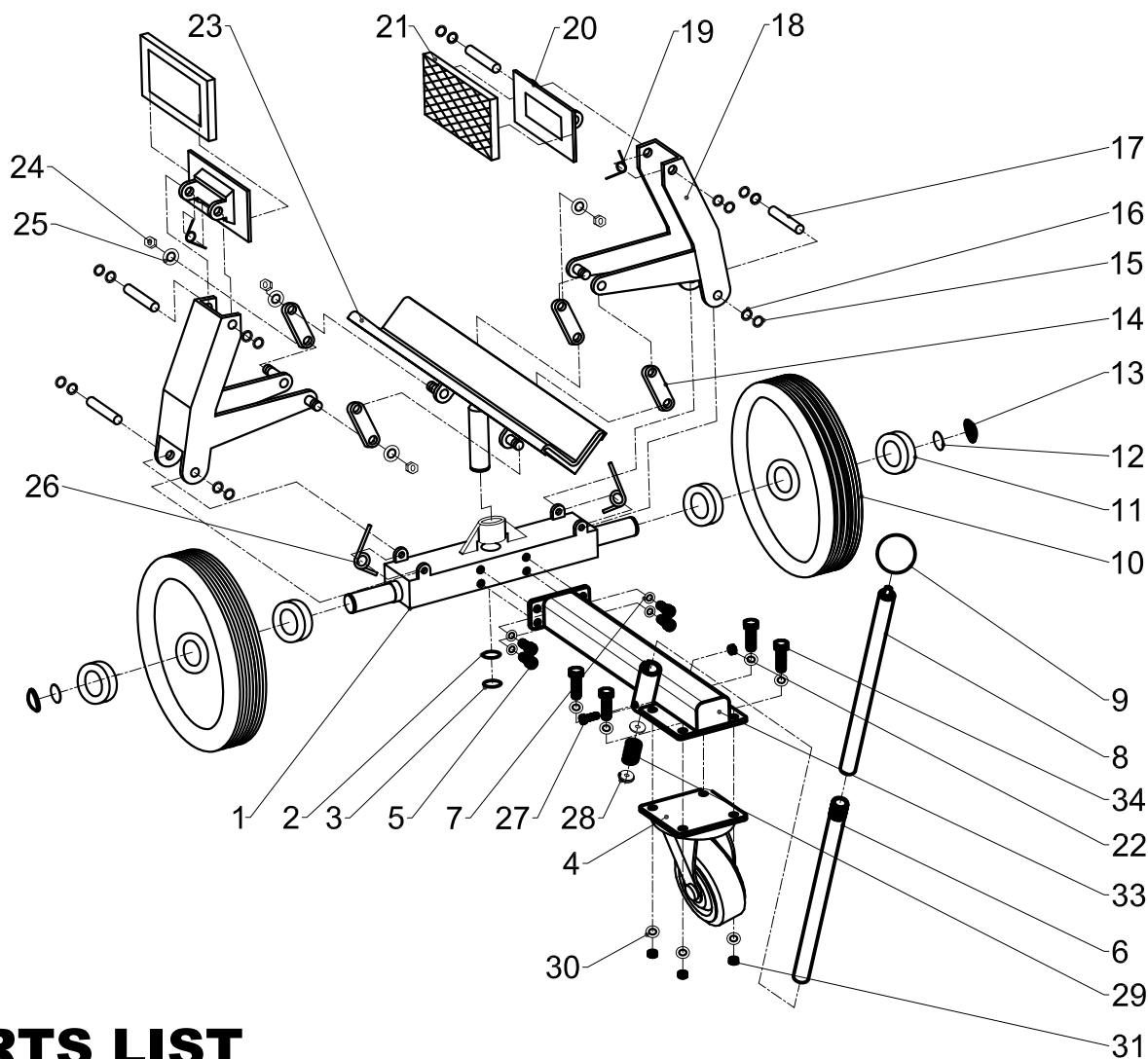
SPECIFICATION

SL - 100	Metric	Imperial
Grip range	0 - 100 mm	0 - 4"
Rubber wheel	400 mm	15.7"
Support plate channel	500 mm	19.7"
Working load limit	400 kg	882 lb
Net weight	28 kg	62 lb
Packaging dimension	540x500x520 mm	21.3"x19.7"x20.5"

DIMENSIONS



DRAWING LIST



PARTS LIST

CODE	POS.	DESCRIPTION	QTY.
SL100 - 001	1	Base	01
SL100 - 002	2	Copper washer Ø25	01
SL100 - 003	3	Circlips Ø25	01
SL100 - 004	4	Swivel caster (Locking type)	01
SL100 - 005	5	Hexagon socket head cap screw M8x20	04
SL100 - 006	6	Bottom handle (*)	01
SL100 - 007	7	Washer Ø8	04
SL100 - 008	8	Top handle (*)	01
SL100 - 009	9	Rubber handle (*)	01
SL100 - 010	10	Wheel 4.00-8	02
SL100 - 011	11	Bearing 6205	04
SL100 - 012	12	Copper washer Ø25	02
SL100 - 013	13	Dome axle caps Ø25	02
SL100 - 014	14	Connecting	04
SL100 - 015	15	Circlips Ø12	08
SL100 - 016	16	Copper washer Ø12	08
SL100 - 017	17	Arm pin	04

CODE	POS.	DESCRIPTION	QTY.
SL100 - 018	18	Arm	02
SL100 - 019	19	Top spring	02
SL100 - 020	20	Jaw	02
SL100 - 021	21	Rubber pad	02
SL100 - 022	22	Hexagon nut M5	01
SL100 - 023	23	"V" carriage support	01
SL100 - 024	24	Hexagon nut M10	08
SL100 - 025	25	Washer Ø10	08
SL100 - 026	26	Bottom spring	02
SL100 - 027	27	Hexagon bolt M5 x 40	01
SL100 - 028	28	Limit washer Ø24 (*)	02
SL100 - 029	29	Compression spring (*)	01
SL100 - 030	30	Washer Ø10	08
SL100 - 031	31	Hexagon nut M10	04
SL100 - 033	33	Front base	01
SL100 - 034	34	Hexagon bolt M10x30	04

(*) Part universal for all Aardwolf Selflocking Trolley
When ordering, please give number of spare - part (code number) plus type of Selflocking Trolley.
For example: SL100 - 006 , QTY 02
 SL100 - 021 , QTY 01

WARRANTY & DISCLAIMER

1. Warranty

After receiving the goods, it is strongly recommended to the buyer to check for sure, based on the spare part list and spare drawing attached with the goods, that the spare parts has not been damaged or lost during shipment. Any damages or losses must be officially claimed to Aardwolf Industries LLC's within 8 days since the date of goods receipts.

This handler is granted a 12-month warranty based on Aardwolf Industries LLC's warranty policy since the date of purchase.

The warranty coverage is not applicable:

- The clamp is handled incorrectly during manoeuvring.
- The operator fails to comply with the instructions in this booklet.
- The clamp's maximum permissible capacity is exceeded.
- The specifications for slab thickness are not followed.
- Damages are due to inadequate maintenance and inspections.
- Damage is due to improper storage.
- Repairs were performed by the user without our permission.
- Non-original spare parts were used.

2. Disclaimer

Aardwolf Industries LLC's warranty does not cover the incorrect assembly and misuse of Portable Gantry Crane, the lack of maintenance and repair of lifter as scheduled by the manufacturer, the operation carried out by non-competent or non-permission operator or non-original spare parts used or installed.

WE ARE PROVIDE

SIMPLE, REALIABLE, COST SAVING
AND **AWESOME IDEAS** FOR YOUR BUSINESS



SCAN ME TO SEE
PRODUCTS VIDEO



CONTACT US

sales@aardwolf.com.au | www.aardwolf.com.au

