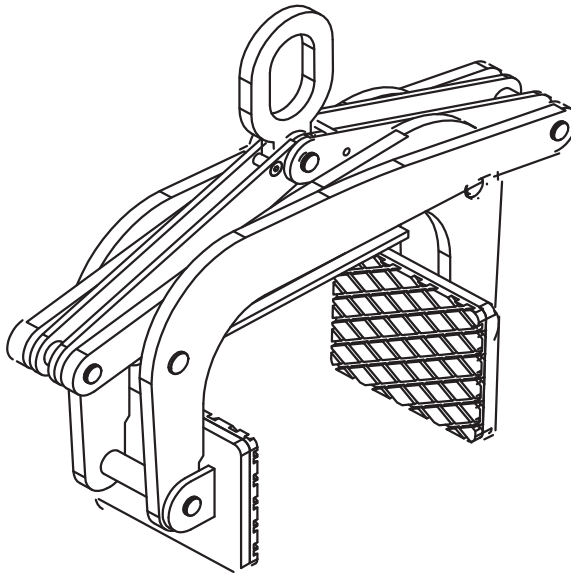




# AARDWOLF SCISSOR LIFTER

## OWNER'S MANUAL

**PRODUCT CODE: ASL-350**



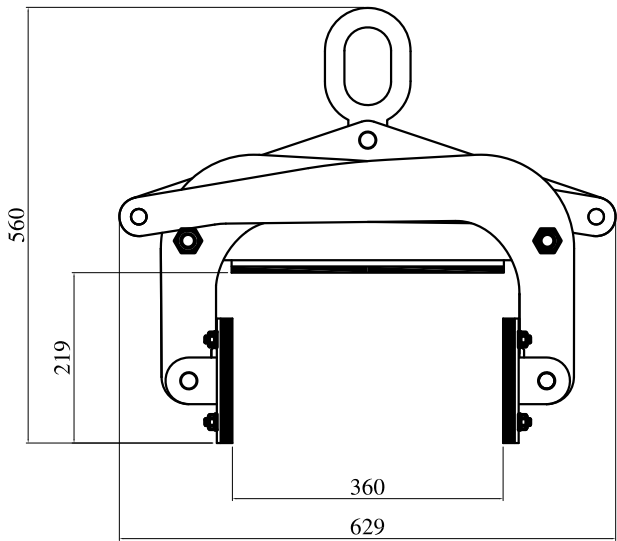
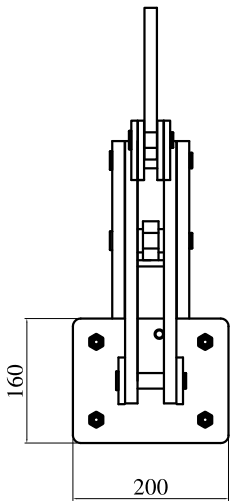
## CONTENTS

- ➊ TECHNICAL SPECIFICATION ➋ FEATURES ➌ SAFETY INSTRUCTIONS
- ➍ SAFETY INSTRUCTIONS FOR HOISTING ACCESSORIES ➎ PART DRAWING & PART LIST
- ➏ INSTRUCTIONS FOR USE ➐ INSPECTIONS, MAINTENANCE & REPAIR ➑ WARRANTY

The Aardwolf Scissor Lifter is equipped with a rubber contact pad for the safe handling of materials with smooth surfaces. By means of a gravity controlled locking latch, the clamp automatically grips and releases the materials. Suitable for lifting marble and granite slabs, tomb stones, concrete barriers, curbs (kerbs) and median walls.



|                      | <b>Metric</b><br>(mm-kg) | <b>Imperial</b><br>(inch-lb) |
|----------------------|--------------------------|------------------------------|
| Grip range           | 250 - 350                | 9.8" – 12"                   |
| Working load limit   | 1500                     | 3307                         |
| Net weight           | 48.5                     | 107                          |
| Gross weight         | 52                       | 115                          |
| Packaging dimensions | 700 x 230 x 480          | 27.6" x 9.1" x 18.9"         |



FEATURES

- Auto locks and unlocks.
- Long lasting, high friction replaceable polyurethane gripping pads.
- Protective rubber-lined bar prevents the material from chipping.



- Carefully consider all safety regulations and existing standards and codes in your country for hoisting operations.
- Permission to work with the Scissor Lifter should only be given to people who are suitably trained, competent and acquainted with this operating manual and safety regulations.
- Inspect clamp. If the clamp is worn or damaged, do not use.
- Select proper size clamp for the job. Determine the weight of the slab to be lifted. Do not exceed working load limit shown on clamp. Slab thickness must be within grip range specified by the manufacture.
- Do a risk assessment of the material that is being lifted.
- The slab must be free of fractures and other defects that may cause the slabs to fall apart while being lifted.

All personnel must stand clear of the load while it is being lifted or moved.

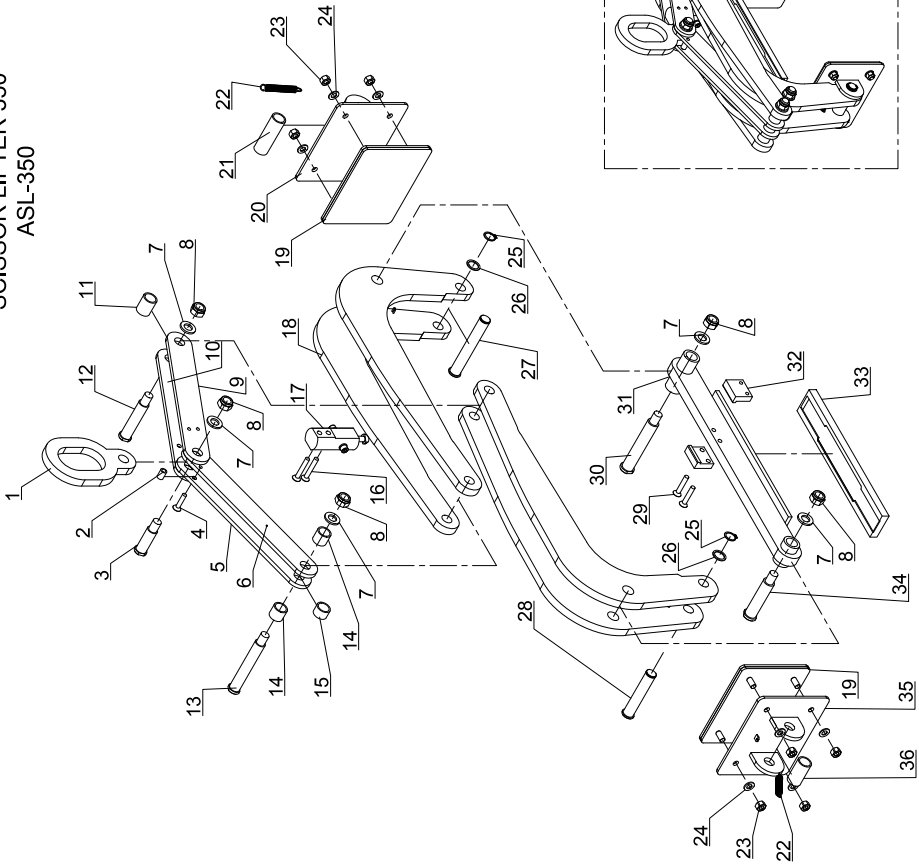
- The grip depends on friction. Check that the rubber pads are free from dirt, grease and other substances that may reduce their effectiveness.
- Do not lift wet slab. The grip depends on friction. Lifting wet slab may cause the rubber pads to lose their grip.
- Loads consisting of more than one piece should only be lifted if they are tightly combined into one unit.
- Position the clamp so that it is square with the slab to be lifted, and in the centre of the slab so that the load is balanced.
- Make sure that slab is inserted to the full depth into the opening of the clamp.
- Take up slab slowly. A trial tensioning of load will usually indicate proper balance.
- Do not lower clamp onto other slabs or material while lowering slab into racks, as clamp will release its load.

Important! In order to protect people from getting injured it is important to follow some general safety directions while using hoisting accessories.

- Read the operation manual carefully before you use hoisting accessories.
- Make sure that the operation manual is always available at the place where the hoisting accessories are used.
- Give permission to work with hoisting accessories only to people who are suitably trained and competent.
- Wear safety equipment, like helmet, gloves and safety boots.
- Never leave a lifted load unsupervised.
- Lift a load only as much as is really necessary.
- Do not get underneath the load and do not permit others to do so.
- Connections or individual parts of hoisting accessories should never be able to loosen by themselves.
- Hoisting accessories must be stored in a place where they are protected against weather conditions and aggressive substances.
- Defect hoisting accessories are no longer to be used.
- Repairs and checks are to be made only by qualified people.



SCISSOR LIFTER 350  
ASL-350



| No. | Code      | Part Number          | Qty |
|-----|-----------|----------------------|-----|
| 01  | ASL350-01 | Hook                 | 01  |
| 02  | ASL350-02 | Bushing Ø30xØ40 L17  | 01  |
| 03  | ASL350-03 | Pin Ø20x79           | 01  |
| 04  | ASL350-04 | Flat Head Bolt M8x30 | 01  |
| 05  | ASL350-05 | Upper Arm 1          | 01  |
| 06  | ASL350-06 | Upper Arm 2          | 01  |
| 07  | ASL350-07 | Washer M16           | 05  |
| 08  | ASL350-08 | Nylon Nut M16        | 05  |
| 09  | ASL350-09 | Upper Arm 3          | 01  |
| 10  | ASL350-10 | Upper Arm 4          | 01  |
| 11  | ASL350-11 | Pipe Ø27x2.5 L34     | 01  |
| 12  | ASL350-12 | Pin Ø20x111          | 01  |
| 13  | ASL350-13 | Pin Ø20x144          | 01  |
| 14  | ASL350-14 | Pipe Ø27x2.5 L23     | 02  |
| 15  | ASL350-15 | Pipe Ø27x2.5 L18     | 01  |
| 16  | ASL350-16 | Flat Head Bolt M8x47 | 02  |
| 17  | ASL350-17 | Locking              | 01  |
| 18  | ASL350-18 | Lower Arm            | 04  |
| 19  | ASL350-19 | Rubber Pad           | 02  |
| 20  | ASL350-20 | Jaw 1                | 02  |
| 21  | ASL350-21 | Pipe Ø27x2.5 L83     | 01  |
| 22  | ASL350-22 | Spring of Jaw        | 02  |
| 23  | ASL350-23 | Nut M10              | 08  |
| 24  | ASL350-24 | Washer M10           | 08  |
| 25  | ASL350-25 | Circlip Ø20          | 02  |
| 26  | ASL350-26 | Copper Washer Ø20    | 02  |
| 27  | ASL350-27 | Pin Ø20x141          | 01  |
| 28  | ASL350-28 | Pin Ø20x108          | 01  |
| 29  | ASL350-29 | Flat Head Bolt M8x40 | 02  |
| 30  | ASL350-30 | Pin Ø22x144          | 01  |
| 31  | ASL350-31 | Limited Bar          | 01  |
| 32  | ASL350-32 | Lock Stop            | 02  |
| 33  | ASL350-33 | Rubber               | 01  |
| 34  | ASL350-34 | Pin Ø22x111          | 01  |
| 35  | ASL350-35 | Jaw 2                | 01  |
| 36  | ASL350-36 | Pipe Ø27x2.5 L50     | 01  |

## 6. INSTRUCTIONS FOR USE

- Operating personnel must stand so that they always have a full view of raising/lowering movements of the lifting equipment and its load.
- Move top of slab out from pack of slabs by means of pinch bar and wedge, allowing enough room for back plate of clamp to pass between slab and pack of slabs. Do not move top of slab pass center of balance, keep slab in inclined position.
- Position the clamp squarely and in the centre of the slab so that the load is balanced.
- Make sure that the slab is inserted full depth into the opening of the clamp.
- Release the locking latch so that the jaws will lock onto the slab when the lifting cable is raised.
- Lift slab slowly to ensure load is balanced.
- **Warning!** Before lowering the load, make sure that there are no obstructions that the load or the clamp could unintentionally rest on. In this event the clamp can drop the load.  
Important: Carefully observe the Safety instructions supplied with the lifting clamp.

## 7. INSPECTION, MAINTENANCE & REPAIR

There are two types of inspections - in-service and periodic.

### **In-service:**

A visual inspection prior to each use. This implies that prior to each lift, the user has a good look over the lifting clamp to ensure that there is no significant damage or wear, and that the working load limit tag or markings are fitted and limit legible. At this point, if any defects are noted, the lifting clamp should be withdrawn from service, and inspected by a competent person who can make a decision on whether to use, repair or discard the lifting clamp.

### **Periodic:**

The lifting clamps should be checked and tested every 12 months by a



competent person who has been trained and who can make a decision on whether to use, repair or discard the lifting clamp. These inspections also need to be adequately documented and are mandatory in many countries. Always use original spare parts when carrying out repairs or maintenance.

### CE - DECLARATION OF CONFORMITY

We declare that the product is in conformity with the following standard:  
The Machinery Directive 2006/42/EC.

**Note:** It is the responsibility of the user to adapt to state or local laws. The end user is responsible to use the equipment safely in a manner that it is designed for and within the rated capacity of the unit.

## 8. WARRANTY

At the time of delivery it is necessary to check that the clamp has not been damaged during shipment. Any claims must be presented within 8 days of the date of delivery of the product.

We grant you 12 months warranty on the Aardwolf Scissor Lifter countered from the day of purchase.

The warranty coverage is not applicable:

- The clamp is handled incorrectly during manoeuvring.
- The operator fails to comply with the instructions in this booklet.
- The clamp's maximum permissible capacity is exceeded.
- The specifications for slab thickness are not followed.
- Damages are due to inadequate maintenance and inspections.
- Damage is due to improper storage.
- Repairs were performed by the user without our permission.
- Non-original spare parts were used.



## USA



### AARDWOLF USA

- 📍 19201 South Reyes Avenue,  
Suite A3 Rancho Dominguez California
- ☎ (562) 553-6050
- ✉ leo@aardwolfusa.com
- 🌐 www.aardwolfusa.com

## INDIA



### AARDWOLF NORTH INDIA

- 📍 Harmara Road, Industrial area,  
Madanganj, Kishangarh, Rajasthan n  
India / Pin no. 305801
- ☎ Tel: +91 93584 48474
- ✉ sales@aardwolf.co.in
- 🌐 Web: www.aardwolf.co.in

## AUSTRALIA



### AARDWOLF AUSTRALIA

- 📍 1/5 Stanton Road,  
Seven Hills NSW 2147
- ☎ +02 9838 8427
- ✉ enquiries@aardwolfaustralia.com
- 🌐 www.aardwolfaustralia.com

## INDIA



### AARDWOLF SOUTH INDIA

- 📍 # 9/27, Ground Floor, 5th Main Road,  
Ganesha Block, Sultanpalya,  
RT Nagar Post, Bengaluru-560 032
- ☎ Mob: +91 99017 24600
- ✉ bengaluru@aardwolf.co.in
- 🌐 www.aardwolf.co.in

## GERMANY



### STONE GLASS EQUIPMENT UG

- 📍 Am GutstKch 11, 8451 Crimmitschau  
Blankenhain, Germany.
- ☎ +49 366 0811 9236
- ✉ sales@aardwolf.com.de
- 🌐 www.aardwolf.com.de

## INDIA



### AARDWOLF CENTRAL INDIA

- ☎ Mob: 91 97659 06007
- ✉ mumbai@aardwolf.co.in
- 🌐 www.aardwolf.co.in

## VIETNAM



### AARDWOLF VIETNAM

- 📍 1B, An Phu, Thuan An,  
Binh Duong, Vietnam.
- ☎ +84 274 371 2827438/39
- ✉ sales@aardwolf.com.au
- 🌐 www.aardwolf.com.au

