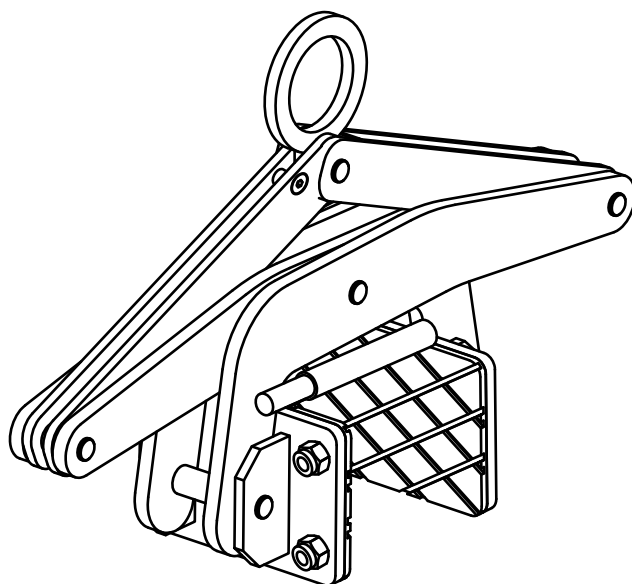




AARDWOLF SCISSOR CLAMP LIFTER

OWNER'S MANUAL**PRODUCT CODE: ASL-105**

CONTENTS

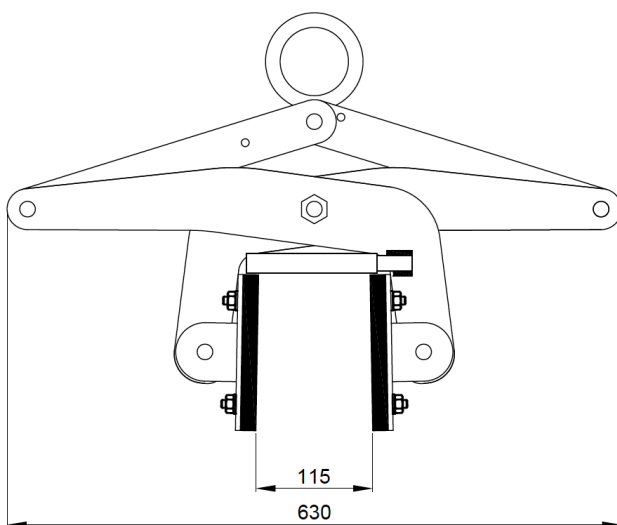
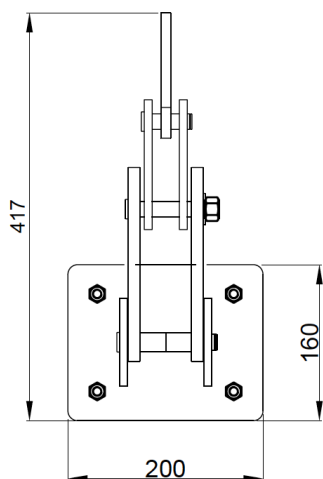
- ❶ SPECIFICATIONS
- ❷ FEATURES
- ❸ SAFETY INSTRUCTIONS
- ❹ SAFETY INSTRUCTIONS FOR HOISTING ACCESSORIES
- ❺ PARTS DRAWING & PART LIST
- ❻ INSTRUCTIONS FOR USE
- ❼ INSPECTION, MAINTENANCE & REPAIR
- ❽ WARRANTY

The Aardwolf Scissor Clamp Lifter is equipped with a rubber contact pad for the safe handling of materials. By means of a gravity controlled locking latch, the clamp automatically grips and releases the materials. Suitable for lifting marble and granite slabs, tombstones, concrete barriers, curbs (kerbs) and median walls.



1. SPECIFICATIONS

	Metric (mm-kg)	Imperial (inch-lb)
Grip range	0 - 105	0 – 4"
Working load limit	750	1653
Net weight	24	53
Gross weight	25	55
Packaging dimensions	680 x 220 x 370	27" x 8.6" x 14.6"



2. FEATURES

- Auto locks and unlocks
- Long-lasting, high friction replaceable Polyurethane gripping pads
- Protective rubber-lined bar prevents the material from chipping



3. SAFETY INSTRUCTIONS

- Carefully consider all safety regulations and existing standards and codes in your country for hoisting operations.
- Permission to work with the Scissor Lifter should only be given to people who are suitably trained, competent and acquainted with this operating manual and safety regulations.
- Inspect clamp. If the clamp is worn or damaged, do not use.
- Select proper size clamp for the job. Determine the weight of the slab to be lifted. Do not exceed working load limit shown on clamp. Slab thickness must be within grip range specified by the manufacture.
- Do a risk assessment of the material that is being lifted.
- The slab must be free of fractures and other defects that may cause the slabs to fall apart while being lifted.
- All personnel must stand clear of the load while it is being lifted or moved.
- The grip depends on friction. Check that the rubber pads are free from dirt, grease and other substances that may reduce their effectiveness.
- Do not lift wet slab. The grip depends on friction. Lifting wet slab may cause the rubber pads to lose their grip.
- Loads consisting of more than one piece should only be lifted if they are tightly combined into one unit.
- Position the clamp so that it is square with the slab to be lifted, and in the centre of the slab so that the load is balanced.
- Make sure that slab is inserted to the full depth into the opening of the clamp.
- Take up slab slowly. A trial tensioning of load will usually indicate proper balance.
- Do not lower clamp onto other slabs or material while lowering slab into racks, as clamp will release its load.

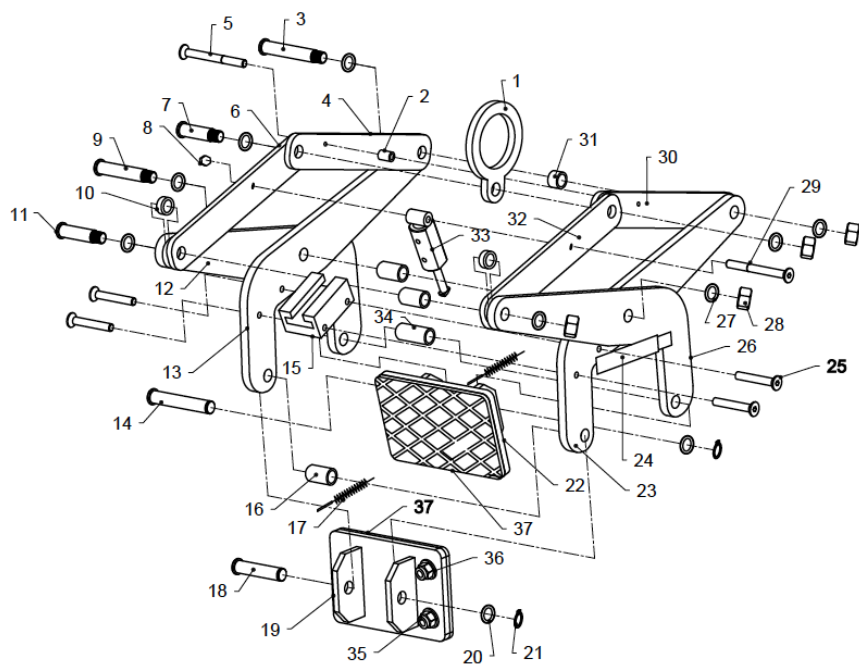
4. SAFETY INSTRUCTIONS FOR HOISTING ACCESSORIES

Important! In order to protect people from getting injured it is important to follow some general safety directions while using hoisting accessories.

- Read the operation manual carefully before you use hoisting accessories.
- Make sure that the operation manual is always available at the place where the hoisting accessories are used.
- Give permission to work with hoisting accessories only to people who are suitably trained and competent.
- Wear safety equipment, like helmet, gloves and safety boots.
- Never leave a lifted load unsupervised.
- Lift a load only as much as is really necessary.
- Do not get underneath the load and do not permit others to do so.
- Connections or individual parts of hoisting accessories should never be able to loosen by themselves.
- Hoisting accessories must be stored in a place where they are protected against weather conditions and aggressive substances.
- Defect hoisting accessories are no longer to be used.
- Repairs and checks are to be made only by qualified people.



5. PART DRAWING & PART LIST



SPARE PARTS LIST

CODE	POS.	DESCRIPTION	QTY
ASL105 - 001	1	Hook	01
ASL105 - 002	2	Spacing Pipe Ø8 x 11 mm	01
ASL105 - 003	3	Pin Ø16 x 60 mm	01
ASL105 - 004	4	Upper Arm 1	01
ASL105 - 005	5	Countersunk Flat Head Screw M8x30	01
ASL105 - 006	6	Upper Arm 2	01
ASL105 - 007	7	Pin Ø16 x 52 mm	01
ASL105 - 008	8	Hexagon Nut M8	01
ASL105 - 009	9	Pin Ø16 x 98 mm	01
ASL105 - 010	10	Spacing Pipe Ø16 x 4 mm	01
ASL105 - 011	11	Pin Ø16 x 85 mm	01
ASL105 - 012	12	Lower Arm 1	01
ASL105 - 013	13	Lower Arm 2	01
ASL105 - 014	14	Pin Ø16 x 103 mm	01
ASL105 - 015	15	Locking Base	01
ASL105 - 016	16	Spacing Pipe Ø16 x 28 mm	03
ASL105 - 017	17	Spring of Jaw	02
ASL105 - 018	18	Pin Ø16 x 78mm	01
ASL105 - 019	19	Left Jaw	01

CODE	POS.	DESCRIPTION	QTY
ASL105 - 020	20	Copper Washer Ø16	04
ASL105 - 021	21	Circlip Ø16	02
ASL105 - 022	22	Right Jaw	01
ASL105 - 023	23	Lower Arm 3	01
ASL105 - 024	24	Plastic Pipe Ø21	02
ASL105 - 025	25	Countersunk Flat Head Screw M6x15	04
ASL105 - 026	26	Lower Arm 4	01
ASL105 - 027	27	Washer Ø16	08
ASL105 - 028	28	Nylon Nut M14	04
ASL105 - 029	29	Flat Head Socket Screw M8x50	01
ASL105 - 030	30	Upper Arm 3	01
ASL105 - 031	31	Spacing Pipe Ø16 x 11 mm	01
ASL105 - 032	32	Upper Arm 4	02
ASL105 - 033	33	Locking Body	01
ASL105 - 034	34	Spacing Pipe Ø16 x 53 mm	01
ASL105 - 035	35	Nylon Nut M10	08
ASL105 - 036	36	Washer Ø10	08
ASL105 - 037	37	Rubber Pad	02

When ordering spare parts, please show the codes of parts and quantities on your purchase order.

For example: ASL105 - 007 , QTY 10

ASL105 - 016 , QTY 02

6. INSTRUCTIONS FOR USE

- Operating personnel must stand so that they always have a full view of raising/lowering movements of the lifting equipment and its load.
- Move top of slab out from pack of slabs by means of pinch bar and wedge, allowing enough room for back plate of clamp to pass between slab and pack of slabs. Do not move top of slab pass center of balance, keep slab in inclined position.
- Position the clamp squarely and in the centre of the slab so that the load is balanced.
- Make sure that the slab is inserted full depth into the opening of the clamp.
- Release the locking latch so that the jaws will lock onto the slab when the lifting cable is raised.
- Lift slab slowly to ensure load is balanced.
- Warning! Before lowering the load, make sure that there are no obstructions that the load or the clamp could unintentionally rest on. In this event the clamp can drop the load.

Important: Carefully observe the Safety instructions supplied with the lifting clamp.

7. INSPECTION, MAINTENANCE & REPAIR

There are two types of inspections - in-service and periodic.

In-service:

A visual inspection prior to each use. This implies that prior to each lift, the user has a good look over the lifting clamp to ensure that there is no significant damage or wear, and that the working load limit tag or markings are fitted and limit legible. At this point, if any defects are noted, the lifting clamp should be withdrawn from service, and inspected by a competent person who can make a decision on whether to use, repair or discard the lifting clamp.

7. INSPECTION, MAINTENANCE & REPAIR

Periodic:

The lifting clamps should be checked and tested every 12 months by a competent person who has been trained and who can make a decision on whether to use, repair or discard the lifting clamp. These inspections also need to be adequately documented and are mandatory in many countries. Always use original spare parts when carrying out repairs or maintenance.

CE - DECLARATION OF CONFORMITY

We declare that the product is in conformity with the following standard: The Machinery Directive 2006/42/EC.

Note: It is the responsibility of the user to adapt to state or local laws. The end user is responsible to use the equipment safely in a manner that it is designed for and within the rated capacity of the unit.

8. WARRANTY

At the time of delivery it is necessary to check that the clamp has not been damaged during shipment. Any claims must be presented within 8 days of the date of delivery of the product.

We grant you 12 months warranty on the Aardwolf Scissor Lifter countered from the day of purchase.

The warranty coverage is not applicable:

- The lifter is handled incorrectly during manoeuvring.
- The operator fails to comply with the instructions in this booklet.
- The lifter's maximum permissible capacity is exceeded.
- The specifications for slab thickness are not followed.
- Damages are due to inadequate maintenance and inspections.
- Damage is due to improper storage.
- Repairs were performed by the user without our permission.
- Non-original spare parts were used.



USA



AARDWOLF USA

- 📍 19201 S Reyes Avenue, Unit C7
Compton California, 90221
- ☎ (562) 553-6050
- ✉ leo@aardwolfusa.com
- 🌐 www.aardwolfusa.com

INDIA



AARDWOLF NORTH INDIA

- 📍 Harmara Road, Industrial area,
Madanganj, Kishangarh, Rajasthan n
India / Pin no. 305801
- ☎ Tel: +91 93584 48474
- ✉ sales@aardwolf.co.in
- 🌐 Web: www.aardwolf.co.in

AUSTRALIA



AARDWOLF AUSTRALIA

- 📍 1/5 Stanton Road,
Seven Hills NSW 2147
- ☎ +02 9838 8427
- ✉ enquiries@aardwolfaustralia.com
- 🌐 www.aardwolfaustralia.com

INDIA

AARDWOLF SOUTH INDIA

- 📍 # 9/27, Ground Floor, 5th Main Road,
Ganesha Block, Sultanpalya,
RT Nagar Post, Bengaluru-560 032
- ☎ Mob: +91 99017 24600
- ✉ bengaluru@aardwolf.co.in
- 🌐 www.aardwolf.co.in

GERMANY



STONE GLASS EQUIPMENT UG

- 📍 Am Gutstfch 11, 8451 Crimmitschau
Blankenhain, Germany.
- ☎ +49 366 0811 9236
- ✉ sales@aardwolf.com.de
- 🌐 www.aardwolf.com.de

INDIA

AARDWOLF CENTRAL INDIA

- ☎ Mob: 91 97659 06007
- ✉ mumbai@aardwolf.co.in
- 🌐 www.aardwolf.co.in

VIETNAM



AARDWOLF VIETNAM

- 📍 1B, An Phu, Thuan An,
Binh Duong, Vietnam.
- ☎ +84 274 371 2827438/39
- ✉ sales@aardwolf.com.au
- 🌐 www.aardwolf.com.au

