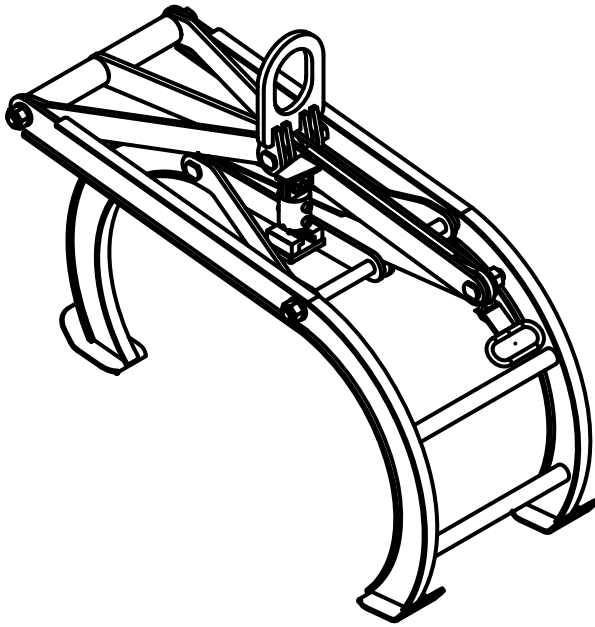




ROCK LIFTER GRAPPLE

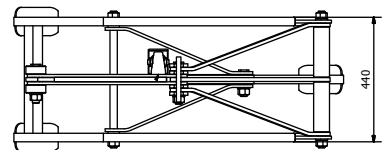
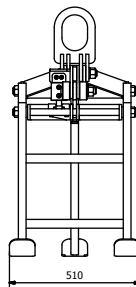
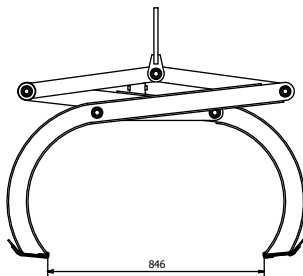
OWNER'S MANUAL

PRODUCT CODE: ARL-800



PRODUCT OVERVIEW

The Rock Lifter Grapple is an attachment that makes moving and setting large rocks and boulders a snap. Designed for the landscape contractor, stonemason, or anyone else who works regularly with rocks and boulders. The Rock Lifter Grapple is an efficient solution to work faster, better and with less labor.



SPECIFICATIONS & FEATURES

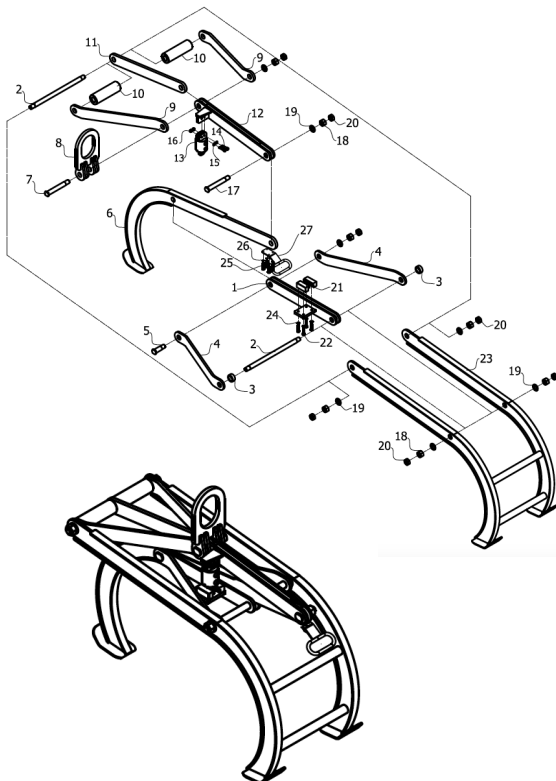
SPECIFICATIONS

- Grip range: 350 – 800 mm
- Working load limit: 750 kg
- Net weight: 119 kg
- Gross weight: 132 kg
- Packaging dimension: 1200 x 560 x 1090 mm

FEATURES

- High tensile steel welded construction.
- Simple and reliable operation with minimal maintenance.
- A safer and easier way to move large rocks.
- Suitable for handling boulders and stones of almost all shapes.
- With a lifting eye for attaching to crane hooks.
- Great for a wide range of jobs.
- The greater the weight the harder the grip of the tongs.
- An actuator allows the clamp to grab and release automatically during each cycle.

PARTDRAWING & PARTLIST



PARTS LIST

No.	Code	Part Number	Qty.
01	ARL800-001	Base Beam	01
02	ARL800-002	Axle $\varnothing 26 \times 484$ - M24	02
03	ARL800-003	Bushing $\varnothing 40 \times 26,5 \times 16$	02
04	ARL800-004	Base Pad	02
05	ARL800-005	Pin $\varnothing 26 \times 56$ - M24	01
06	ARL800-006	Single Arm	01
07	ARL800-007	Pin $\varnothing 26 \times 111$ - M24	01
08	ARL800-008	Hook	01
09	ARL800-009	Top Arm	02
10	ARL800-010	Bushing $\varnothing 56 \times 26 \times 180$	02
11	ARL800-011	Single Top Arm	01
12	ARL800-012	Double Top Arm	01
13	ARL800-013	Lock	01
14	ARL800-014	Bolt M8 x 40	02
15	ARL800-015	Washer M8	02
16	ARL800-016	Nut M8	02
17	ARL800-017	Pin $\varnothing 26 \times 96$ - M24	01
18	ARL800-018	Nut M24	07
19	ARL800-019	Washer M24	07
20	ARL800-020	Thin Nut M24	07
21	ARL800-021	Lock Stop	02
22	ARL800-022	Bolt M8 x 40	04
23	ARL800-023	Double Arm	01
24	ARL800-024	Washer $\varnothing 8$	04
25	ARL800-025	Bolt M6x20	04
26	ARL800-026	Washer $\varnothing 6$	04
27	ARL800-027	Handle	01



INSTRUCTIONS FOR USE

- **Step 1:** Connect the Rock Lifter Grapple to a mobi-crane to start with.
- **Step 2:** Place the lifter onto the rock and make sure that the rock is inserted to the full depth into the opening of the lifter. The load must be balanced before operating the rock.
- **Step 3:** Lift the rock to the desired position.
- **Step 4:** Lower the rock slowly.
NOTE: *Warning! Before lowering the load make sure that there are no obstructions that the load or the clamp could unintentionally rest on.*
- **Step 5:** The gripping action occurs automatically with each lifting cycle.

INSPECTIONS & MAINTENANCE

IN-SERVICE

A visual inspection prior to each use. This implies that prior to each lift, the user has a good look over the lifter to ensure that there is no significant damage or wear and tear, and that the working load limit tag or markings are fitted and legible. At this point, if any defects are noted, the lifting clamp should be withdrawn from service, and inspected by a competent person who can make a decision on whether to use, repair or discard the lifting clamp.

PERIODIC

The Rock Lifter should be checked and tested every 12 months by a competent person who has been trained and who can make a decision on whether to use, repair or discard the lifting clamp. These inspections also need to be adequately documented and are mandatory in many countries. Always use original spare parts when carrying out repairs or maintenance.

WARRANTY

At the time of delivery it is necessary to check that the lifter has not been damaged during shipment. Any claims must be presented within eight days of the date of delivery of the product.

We grant you 12 months warranty on the Rock Lifter, counted from the date of purchase. The warranty will not be applicable if:

- The lifter is handled incorrectly during maneuvering.
- The operator fails to comply with the instructions in this manual.
- The lifter's maximum permissible capacity is exceeded.
- Damages are due to inadequate maintenance and inspections.
- Damage is due to improper storage.



USA



AARDWOLF USA

- 📍 19201 S Reyes Avenue, Unit C7
Compton California, 90221
- ☎ (562) 553-6050
- ✉ leo@aardwolfusa.com
- 🌐 www.aardwolfusa.com

INDIA



AARDWOLF NORTH INDIA

- 📍 Harmara Road, Industrial area,
Madanganj, Kishangarh, Rajasthan n
India / Pin no. 305801
- ☎ Tel: +91 93584 48474
- ✉ sales@aardwolf.co.in
- 🌐 Web: www.aardwolf.co.in

AUSTRALIA



AARDWOLF AUSTRALIA

- 📍 1/5 Stanton Road,
Seven Hills NSW 2147
- ☎ +02 9838 8427
- ✉ enquiries@aardwolfaustralia.com
- 🌐 www.aardwolfaustralia.com

INDIA

AARDWOLF SOUTH INDIA

- 📍 # 9/27, Ground Floor, 5th Main Road,
Ganesha Block, Sultanpalya,
RT Nagar Post, Bengaluru-560 032
- ☎ Mob: +91 99017 24600
- ✉ bengaluru@aardwolf.co.in
- 🌐 www.aardwolf.co.in

GERMANY



STONE GLASS EQUIPMENT UG

- 📍 Am Gutstfch 11, 8451 Crimmitschau
Blankenhain, Germany.
- ☎ +49 366 0811 9236
- ✉ sales@aardwolf.com.de
- 🌐 www.aardwolf.com.de

INDIA

AARDWOLF CENTRAL INDIA

- ☎ Mob: 91 97659 06007
- ✉ mumbai@aardwolf.co.in
- 🌐 www.aardwolf.co.in

VIETNAM



AARDWOLF VIETNAM

- 📍 1B, An Phu, Thuan An,
Binh Duong, Vietnam.
- ☎ +84 274 371 2827438/39
- ✉ sales@aardwolf.com.au
- 🌐 www.aardwolf.com.au

