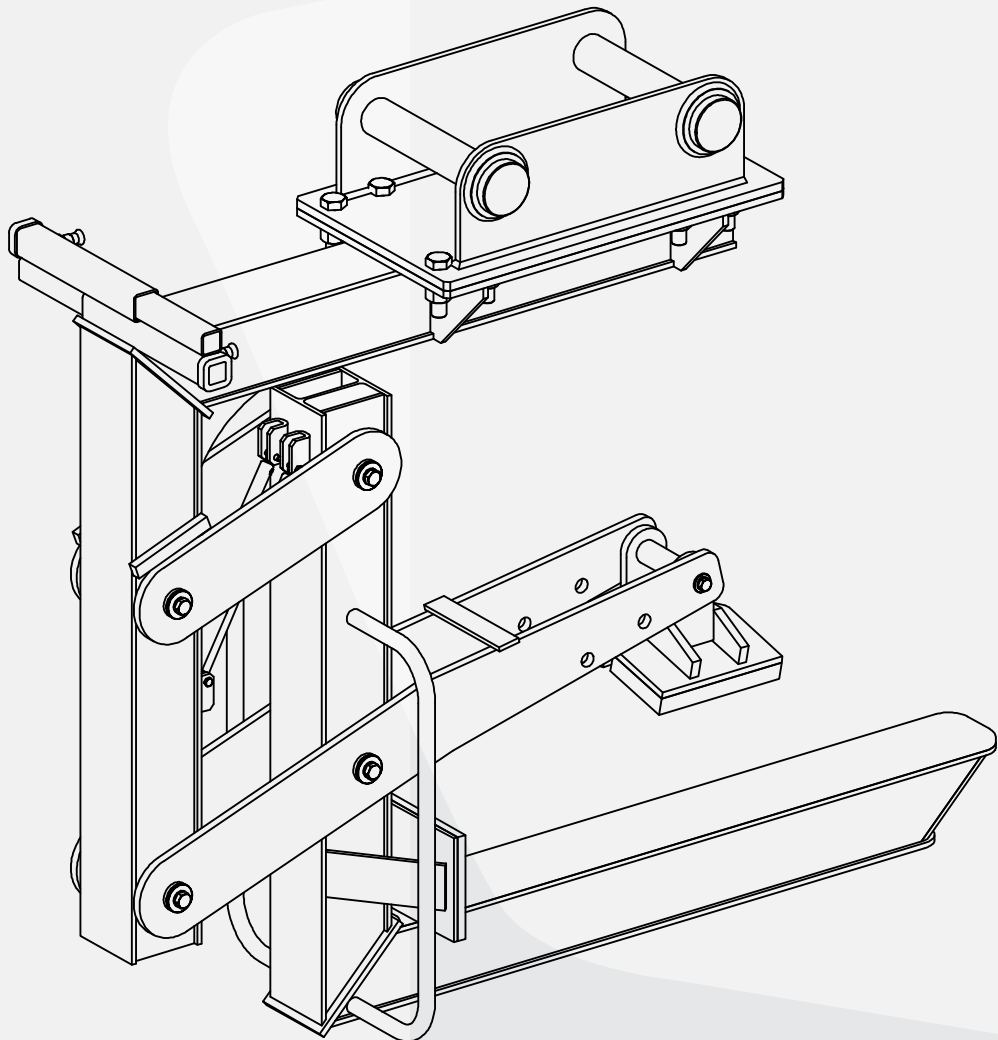


**OWNER'S MANUAL**

AARDWOLF

PIPE HANDLING ATTACHMENT

PHA4000



Faster, smarter, more efficient, flexible, and fully automatic features enable the Pipe Handling Attachment to lift the concrete pipe safely. No hydraulic power supply, slings, chains, or manual assistants are needed during the lifting process. The narrow profile allows the easy installation of concrete pipes into tight trenches.

By means of the clamping mechanism, the pipes are tightly held to enhance accurate material placement. Users are not required to pick up and put down the pipes during the lifting operation. Thus, this device works in an absolutely secure and safe manner.

February, 2022

WELCOME

Welcome onboard!

Thank you so much for your selection of the Pipe Handling Attachment! You and your new Aardwolf Pipe Handling Attachment is now companions. Please read this manual to understand your companion.

This Manual of the Pipe Handling Attachment is designed to provide the important information regarding the purposes, uses and maintenances of the Pipe Handling Attachment. It is compulsory for the operator to carefully read over the manual before operating the Pipe Handling Attachment and keep it available for reference at any time in the workplace.

In the manual, you will find general safety operations, drawing list, parts list, dimensions, features, specifications, instructions for use, inspections, maintenance and repair, warranty

Aardwolf Industries LLC

GENERAL SAFETY OPERATIONS

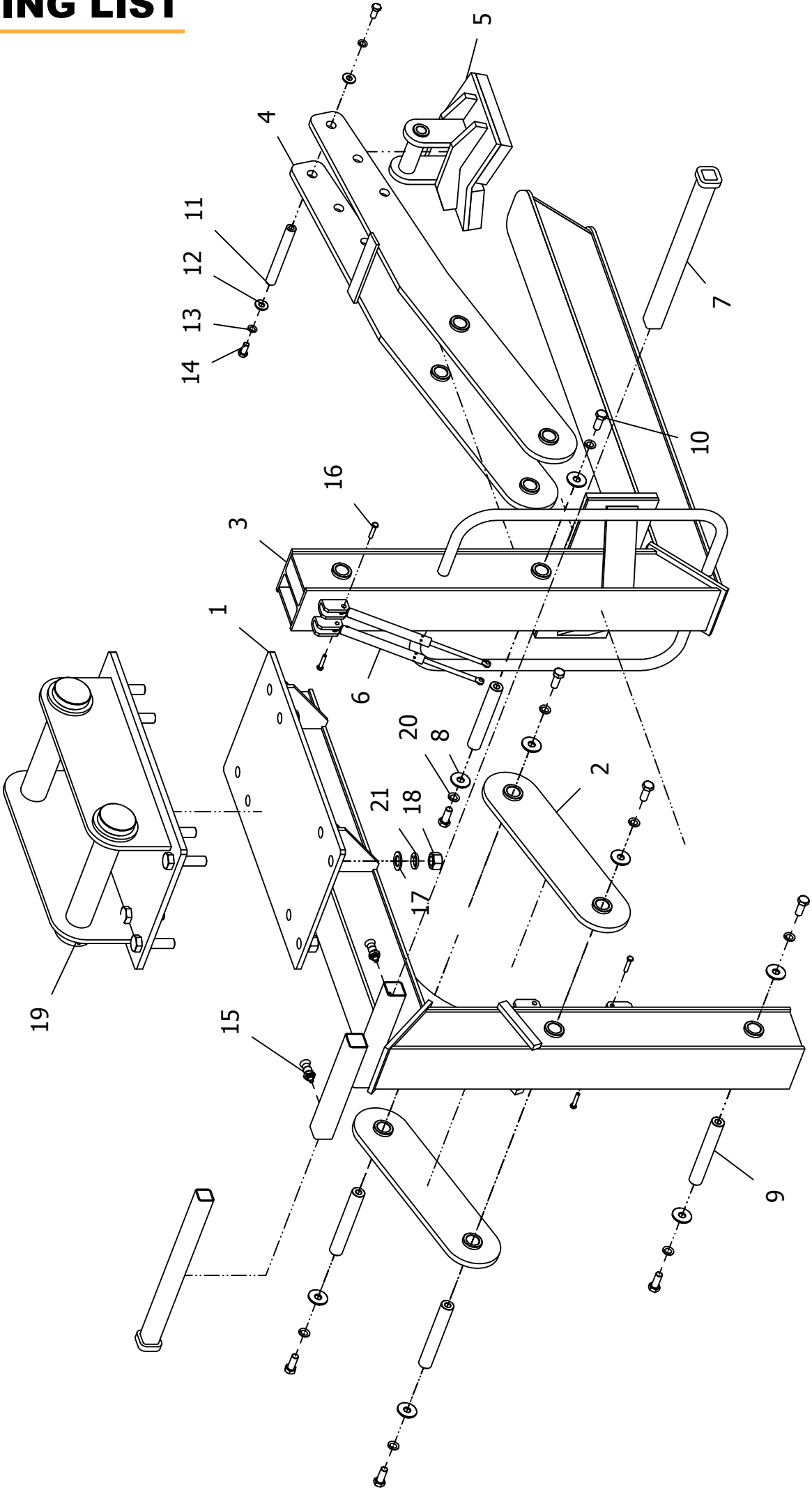
The user's manual for the Pipe Handling Attachment (PHA4000) must always be available at the operation site. The instructions mentioned in this manual must be strictly adhered to. Furthermore, supplementary to the instruction manual, the statutory regulations governing general accident prevention and environmental protection are to be enforced.

Operating and maintenance personnel must have read and understood the operator's manual, in particular the safety instructions, before starting work. Protective equipment must be made available for operating and maintenance personnel and worn at all times. The user or his representative is responsible for supervising operating personnel and ensuring they are aware of the hazards and safety implications of working with the Pipe Handling Attachment.

The Aardwolf Pipe Handling Attachment has innovational designs to reduce risks, which might occur during the lifting process. It is most important that operators adhere to the safety guidances listed below:

- Carefully read this user manual before using the Pipe Handling Attachment.
- Do not carry out any working operations if any issues are found.
- Make sure that all the bolts are securely tightened.
- Select only the proper size, type, and weight of reinforced concrete pipes to lift.
- Check the squeeze head with rubber, locking pins, connecting arms, clamping arm, support bars, and adaptor bracket is in faultless conditions. If they have any damages or are defective, replace them with the original parts from Aardwolf.
- Perform a test for the Pipe Handling Attachment before working with the material.
- Wear safety equipment, like a helmet, gloves, and safety boots.
- Connections or individual parts of the excavator should never be able to loosen by themselves.
- Move slowly to avoid shock loading.
- Do not use the lifter to lift loads that exceed the loading capacity of 4000 kg (8818 lb).
- Do not carry out any lifting operations if any issue is found.
- Do not use the Pipe Handling Attachment for other purposes that it is not designed for.
- Do not make modifications to the Pipe Handling Attachment.
- Never operate the device if it is damaged, malfunctioning, or has missing parts.
- Never leave a lifted load unsupervised.
- Never lift and move a load over people.
- Never use the device in dangerous environments.
- To avoid injury, no one is allowed to stand under the load.
- Follow the general safety operations in this operation manual.
- Clean the Pipe Handling Attachment thoroughly after each use.
- Store in a well-ventilated place, avoid places with high heat or humidity.

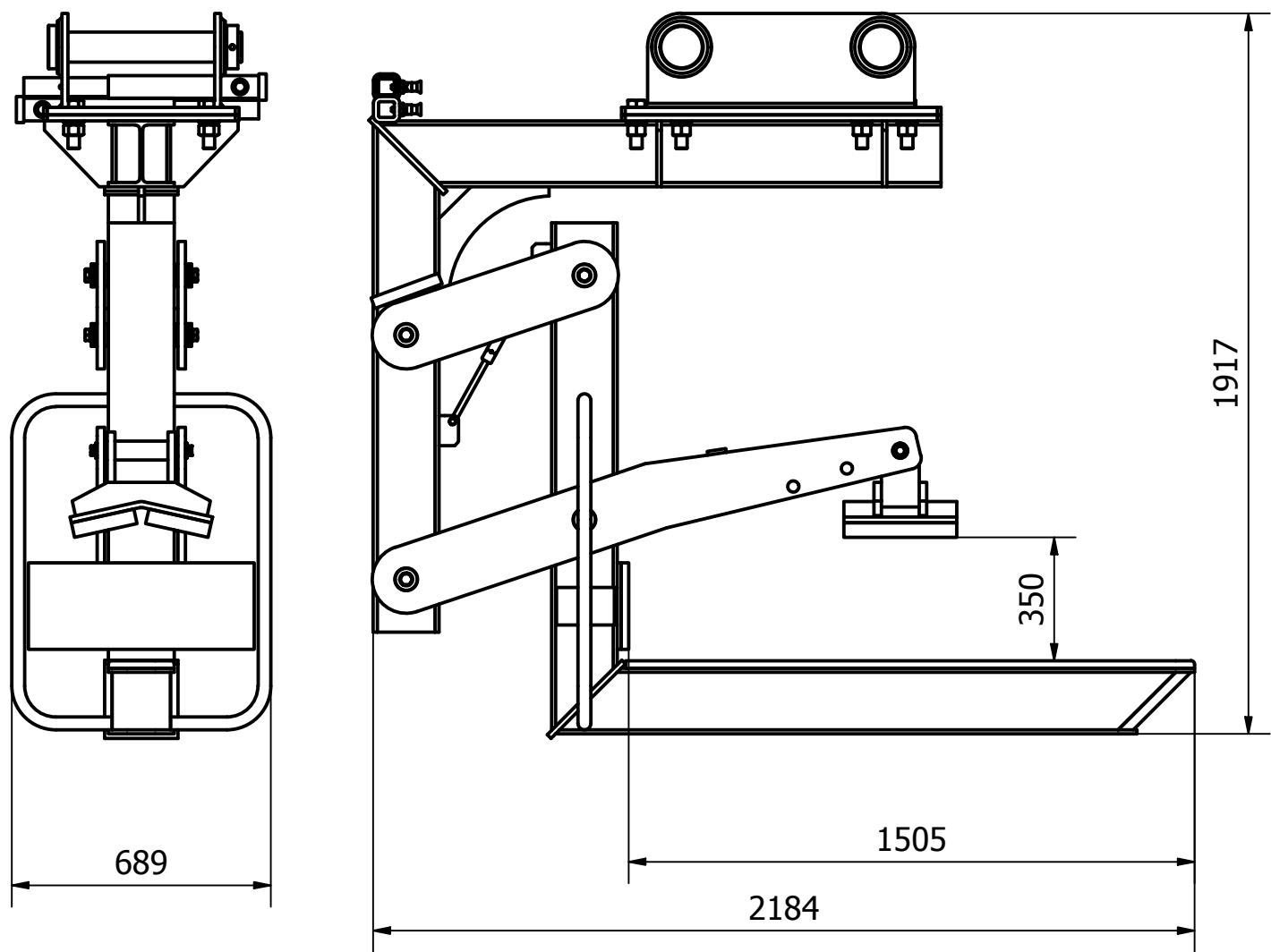
DRAWING LIST



PARTS LIST

POS.	CODE	DESCRIPTION	Q'TY
1	PHA4000-01	Standing Frame	1
2	PHA4000-02	Connecting Arm	2
3	PHA4000-03	Movable Frame	1
4	PHA4000-04	Clamping Arm	1
5	PHA4000-05	Squeeze Head With Rubber	1
6	PHA4000-06	Air Spring	2
7	PHA4000-07	Support Bar	2
8	PHA4000-08	Washer M20	8
9	PHA4000-09	Shaft	4
10	PHA4000-10	Bolt M20 x 2 x 50 - A	8
11	PHA4000-11	Pin	1
12	PHA4000-12	Washer M16	2
13	PHA4000-13	Spring Washer M16	2
14	PHA4000-14	Bolt M16 x 1.5 x 35 - A	2
15	PHA4000-15	Locking Pin	2
16	PHA4000-16	Bolt M10 x 50	4
17	PHA4000-17	Waser M30	8
18	PHA4000-18	Nut M30 x 2	8
19	PHA4000-19	Adaptor Bracket	1
20	PHA4000-20	Spring Washer M20	8
21	PHA4000-21	Washer M30	8

DIMENSIONS



FEATURES

- Auto locks and unlocks a load.
- Durable powder-coated finish.

SPECIFICATIONS

PHA4000	Metric	Imperial
Grip range	300 - 1200 mm	12 - 17 in
Pipe length	2500 mm	98.4 in
Working load limit	4000 kg	8818 lb
Net weight	760 kg	1675 lb
Gross weight	920 kg	2028 lb
Packaging dimensions	2000 x 830 x 2200 mm	78.7 x 32.7 x 86.6 in

INSTRUCTIONS FOR USE

- Attach the Pipe Handling Attachment (PHA4000) to the carrier via the quick-change system as an excavator. The user must ensure the PHA4000 is attached to the carrier tightly before lifting and moving the concrete pipe.
- Insert the Pipe Handling Attachment into the horizontal reinforced concrete pipe. When the squeeze head with rubber grips tightly onto the edge of the material, the user can move it.

NOTE 1: The reinforced concrete pipe must lie on level ground and if necessary, be secured against rolling away. Otherwise, there is a risk of accident!

NOTE 2: The Pipe Handling Attachment is designed with gripping ranges from 300 – 1200 mm so that this device can be lifted in the different sizes of reinforced concrete pipes.

- Move the reinforced concrete pipe slowly and transport it to the installation site or storage area in a horizontal position.

BE CAREFUL: The pipe opening must not be tilted downwards under any circumstances - the danger of an accident!

- The reinforced concrete pipe may only be tilted at the installation point when directly installed. The maximum angle of inclination is 5 - 10°.
- When the reinforced concrete pipe has been installed/lowered, that means the user can lower the Pipe Handling Attachment slightly and then slowly pull it out of the reinforced concrete pipe. Ensure that there are no obstructions.

WARNING: It is strictly forbidden for persons to stay directly at the placing point or when installing the reinforced concrete pipe.

INSPECTIONS, MAINTENANCE AND REPAIR

- There are two types of inspections - in-service and periodic.

IN-SERVICE:

Visual inspection before each use. This implies that before each lift, the user has a good look over the Pipe Handling Attachment to ensure that there is no significant damage or wear and that the working load limit tag or markings are fitted and limit legible. At this point, if any defects are noted, the Pipe Handling Attachment should be withdrawn from service, and inspected by a competent person who can make a decision on whether to use, repair or discard the Pipe Handling Attachment.

PERIODIC:

The Pipe Handling Attachment should be checked and tested every 12 months by a competent person who has been trained and who can make a decision on whether to use, repair, or discard the Pipe Handling Attachment. These inspections also need to be adequately documented and are mandatory in many countries. Always use original spare parts when carrying out repairs or maintenance.

CE - DECLARATION OF CONFORMITY

We declare that the product is in conformity with the following standard: The Machinery Directive 2006/42/EC.

Note: It is the responsibility of the user to adapt to state or local laws. The end-user is responsible to use the equipment safely in a manner that it is designed for and within the rated capacity of the unit.

WARRANTY

At the time of delivery, it is necessary to check that the Pipe Handling Attachment has not been damaged during shipment. Any claims must be presented within eight days from the date of delivery. We grant one year warranty on the Pipe Handling Attachment from the date of purchase.

Warranty coverage is not applicable:

- The user failed to comply with the instructions in the manual.
- Damages are due to inadequate maintenance and inspections.
- Damages are due to improper storage and/or usage.
- User performs the repairs without our permission.
- User uses the non-original spare parts.



WE ARE PROVIDING

SIMPLE, REALIABLE, COST SAVING
AND **AWESOME IDEAS** FOR YOUR BUSINESS



AARDWOLF PRODUCT VIDEO
www.youtube.com/user/AardwolfGroup



FIND YOUR NEAREST AARDWOLF FACTORY SERVICE CENTRE NEAR YOU

AUSTRALIA

1/5 Stanton Road, Seven Hills NSW 2147

Tell: 02 9838 8427

Web: www.aardwolfaustralia.com **Email:** enquiries@aardwolfaustralia.com

BULGARIA Str.Usta Kolio Ficheto 33 **Tell:** +359 887 933 754

INDIA

Harama Road, Industrial Area, Madanganj, Kishangarh, District- Ajmer,
Rajasthan India 305801

Web: www.aardwolf.co.in

Tell: +91 73000 68444

Email: sales@aardwolf.co.in

GERMANY

Schulze-Delitzsch-Weg 2, 33175 Bad Lippspringe

Tell: 05252 8382830

USA

19201 South Reyes Avenue, Suite A3 Rancho Dominguez California,

Tell: (562) 553-6050

90221

Web: www.aardwolfusa.com

Email: leo@aardwolfusa.com

VIETNAM

1B, An Phu, Thuan An City, Binh Duong Province, Vietnam

Tell: +84 933 077 995

Web: www.aardwolf.com.au

Email: info@aardwolf.com.au