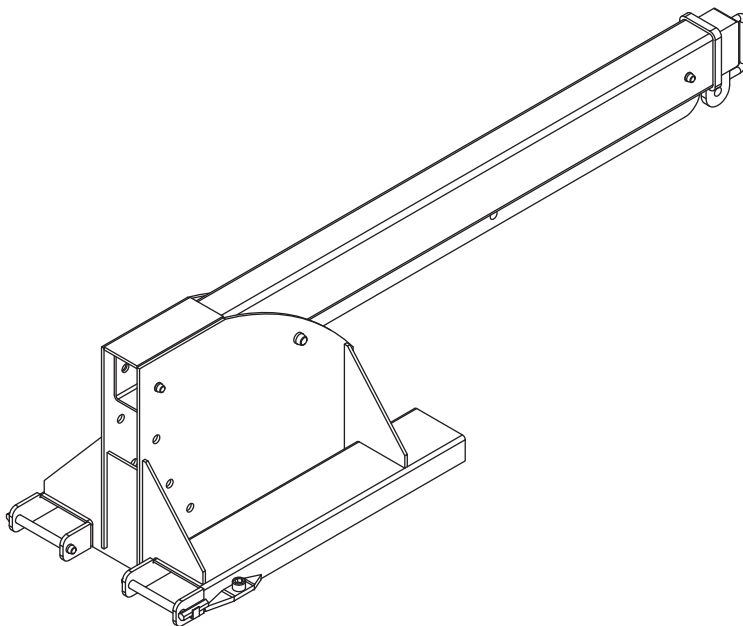




# AARDWOLF PIVOT FORKLIFT BOOM

## OWNER'S MANUAL

**PRODUCT CODE: PFB1-2600**



## CONTENTS

**SAFETY PRECAUTIONS** ▶ **INSTALLATION INSTRUCTIONS** ▶ **BEFORE OPERATION**

**INSTRUCTIONS FOR USE** ▶ **PART DRAWING & PART LIST** ▶ **CENTER OF GRAVITY DIAGRAM**

**LOAD CAPACITY CHART** ▶ **CERTIFICATE OF ASSURANCE** ▶ **WARRANTY**

The Pivot Boom model PFB1-2600 is adjustable for height and length. The tilt facility allows the extra height to compensate for the hook and sling length lost when lifting with a jib attachment.



## SAFETY PRECAUTIONS

Read owner's manual completely before operating unit:

1. Always secure Aardwolf Boom to fork truck carriage with locking bolts & restraint pins.
2. Never stand underneath lift device when in use.
3. Be sure fork mast is tilted back toward driver.
4. The forklift will become unstable and liable to tip forward if the forklift is overloaded. Safe working load will vary according to lift truck capacity. Check the load capacity of the forklift being used.
5. Do not add counter-weights to enable forklifts to lift heavier weights than they are designed to.

## INSTALLATION INSTRUCTIONS

1. Insert forks through fork pockets of boom so that the backside of boom is in contact with fork carriage of fork truck.
2. Lock boom firmly onto fork blades by tightening the two bolts located on the back of each fork pocket.
3. Insert restraint pins behind fork uprights to stop boom from moving forward.
4. Make desired adjustments to boom length by sliding the inner extension tube in or out of main tube, and locking it with locking pin.

## BEFORE OPERATION

1. Ensure that forks of forklift are completely through boom fork pockets, and that the boom is against the fork uprights, near the carriage of the forklift.
2. Secure boom to forklift by locking boom firmly onto fork blades by tightening the two bolts located at the back of each fork pocket. Utilize the restraint pins, which double as spanners for this operation.
3. Insert restraints pins behind fork uprights to stop boom from moving forward.



## BEFORE OPERATION

4. Extend the telescopic tube to the desired distance and secure with locking pin. Ensure the pin is locking the telescopic tube is in place and it cannot move horizontally.
5. Review boom capacity to ensure the boom can lift the desired load at the desired distance safely.
6. Review forklift owner's manual for forklift capacity at the load center of gravity distance and raised height to ensure the forklift can lift the desired load safely.
7. Do not use the boom if it has been damaged.
8. Tilt mast back toward driver.

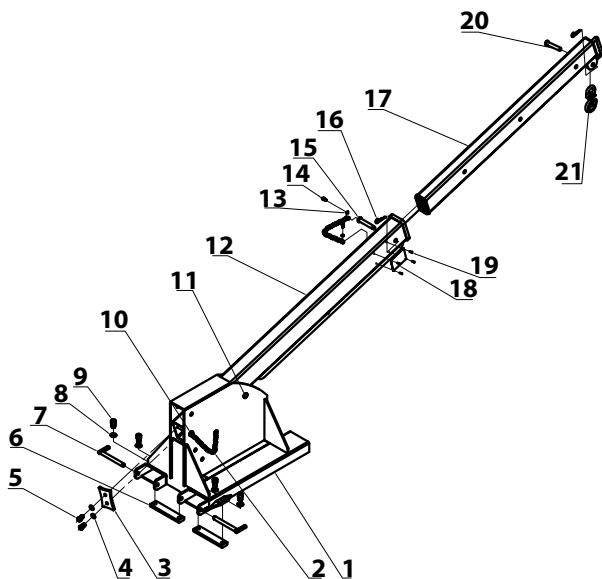
**NOTE:** Safe working load will vary according to lift truck capacity.  
Never overload the forklift!

## INSTRUCTIONS FOR USE

1. Wrap lifting chain, nylon strap, around the load you desire to move. Secure the load to boom utilizing one or both front and rear hooks of the hook bar.
2. Lift the load slowly. If the forklift begins to rise, the load is too heavy for the forklift. Unattached the bundle and move the center of the load closer to the forklift. This may require pushing the telescoping tube back into the larger pipe and locking into position. Make sure all personnel are clear before attempting to lift load. If bundle does not raise evenly, re-center the lifting chains so the load remains parallel with the surface.
3. Ensure all personnel are clear of the area.
4. When removing an object from a stack, as soon as it is clear of the stack lower it to traveling height (as low as possible).
5. Transport the load to the desired location. Move slowly, avoid sharp turns, or turns at high speed. Avoid all bumps and inclines/declines. Sudden stops and starts should also be avoided.
6. Raise/Lower the load into the desired position. Lower load slowly into place.
7. Un-attach load lifting chains from boom. Push telescoping boom back into larger tube and secure with locking pin.



## PIVOT FORKLIFT BOOM PFB1-2600 ASSEMBLY DIAGRAM

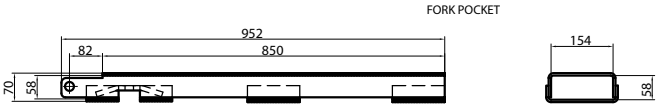
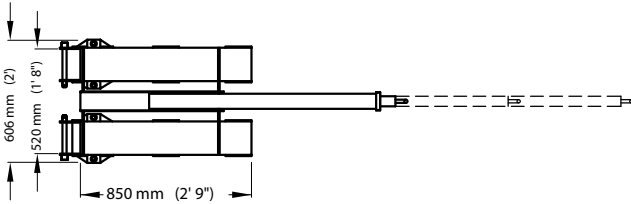
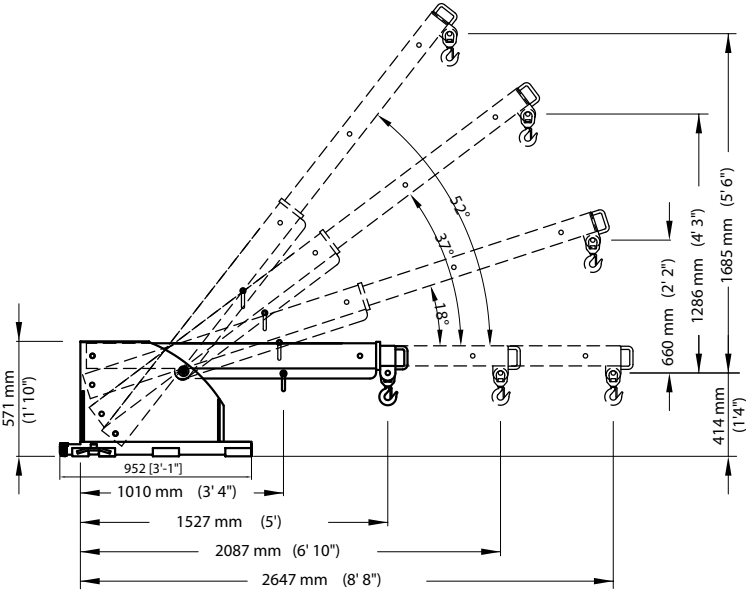


CODE	POSITION	DESCRIPTION	QTY
PFB1 - 001	1	Base	01
PFB1 - 002	2	Chain Ø6x 300	02
PFB1 - 003	3	Flange	01
PFB1 - 004	4	Washers Ø16	02
PFB1 - 005	5	Hexagon Bolt M16 x 30	02
PFB1 - 006	6	Adjust Bar	02
PFB1 - 007	7	Hexagon Pin	02
PFB1 - 008	8	Washers Ø20	04
PFB1 - 009	9	Hexagon Socket Head Cap Screw M20	04
PFB1 - 010	10	Pin 1	01
PFB1 - 011	11	Pin 2	01
PFB1 - 012	12	Cross Bar	01
PFB1 - 013	13	Washers Ø8	04
PFB1 - 014	14	Hexagon Bolt M8 x 30	04
PFB1 - 015	15	Pin 3	01
PFB1 - 016	16	Cotter Pins	03
PFB1 - 017	17	Slide Bar	01
PFB1 - 018	18	Label	01
PFB1 - 019	19	Pop Rivet	04
PFB1 - 020	20	Pin 4	01
PFB1 - 021	21	Swivel Hook 3.0T (SH30T)	01

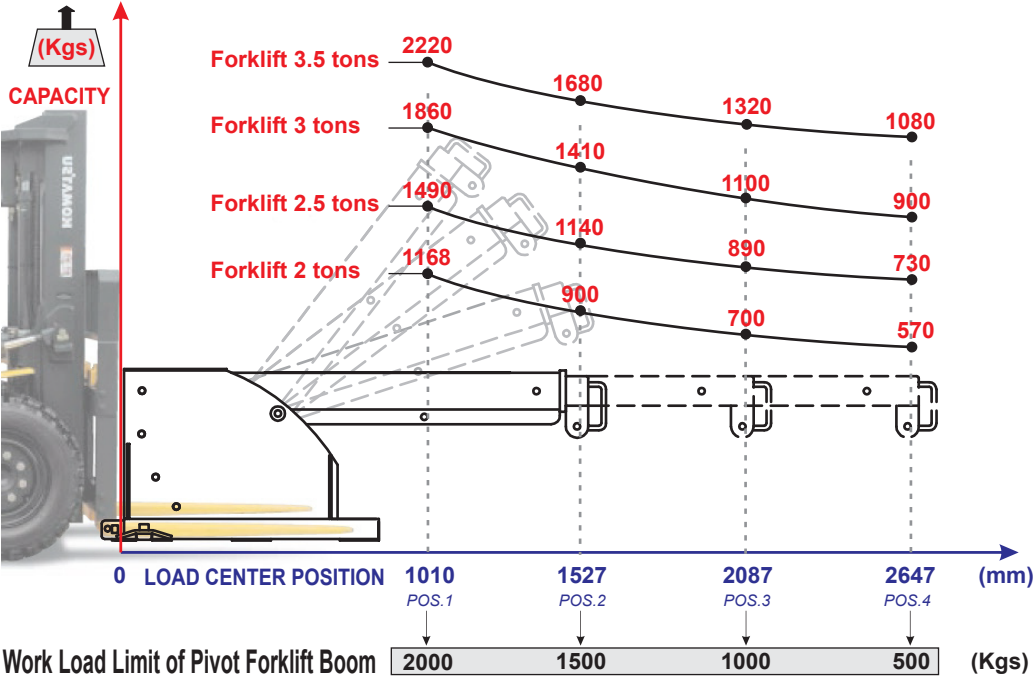
Please note: When assembling match number on upright with number on base.



# CENTER OF GRAVITY DIAGRAM



LOAD CAPACITY CHART  
PIVOT FORKLIFT BOOM (PFB1- 2600)



This certificate is your assurance that our Aardwolf Serial Fork Truck Booms and attachments are manufactured in accordance with our interpretations of applicable national OSHA (29CFR 1910.178) fork truck standards. Please realize that some portions of these standards are the responsibility of the end user to fulfill, i.e., 29 CFR 1910.178 (a) (4). Modifications and additions with affect capacity and safe operation (of the fork truck) shall not be performed by the customer or user without manufacturer's prior written approval. Capacity, operation, and maintenance instruction plates, tags or decals shall be changed accordingly.

### **CE-DECLARATION OF CONFORMITY**

We declare that the product is in conformity with the following standard: The Machinery Directive 2006/42/EC.

**NOTE: *It is the responsibility of the user to adapt to state or local laws. The end user is responsible to use the equipment safely in a manner that it is designed for and within the rated capacity of the unit.***

## WARRANTY

This product is warranted for one year from date of purchase to be free of manufacturing defects in material and workmanship. This warranty does not cover normal wear of parts or damage resulting from any of the following: negligent use or misuse of the product, use or application contrary to installation instructions, or disassembly, repair or a lteration by any person prior to authorization from a factory representative.





## AMERICA



### AARDWOLF AMERICA

- 📍 19201 S Reyes Avenue, Unit C7  
Compton California, 90221
- ☎ (562) 553-6050
- ✉ leo@aardwolfusa.com
- 🌐 www.aardwolfusa.com

## INDIA



### AARDWOLF NORTH INDIA

- 📍 Harmara Road, Industrial Area,  
Madanganj, Kishangarh, Rajasthan  
India / Pin no. 305801
- ☎ Tel: +91 93584 48474
- ✉ sales@aardwolf.co.in
- 🌐 Web: www.aardwolf.co.in

## AUSTRALIA



### AARDWOLF AUSTRALIA

- 📍 1/5 Stanton Road,  
Seven Hills NSW 2147
- ☎ +02 9838 8427
- ✉ enquiries@aardwolfaustralia.com
- 🌐 www.aardwolfaustralia.com

## INDIA

### AARDWOLF CENTRAL INDIA

- 📍 No: 6, Sharma Complex, 3rd Cross,  
Ganesha Block, Dinnur Main Road,  
R. T. Nagar P.O Bengaluru-560032
- ☎ +91 99017 24600
- ✉ bengaluru@aardwolf.co.in
- 🌐 www.aardwolf.co.in

## GERMANY



### STONE GLASS EQUIPMENT UG

- 📍 Am GutstKch 11, 8451Crimmitschau  
Blankenhain, Germany.
- ☎ +49 366 0811 9236
- ✉ sales@aardwolf.com.de
- 🌐 www.aardwolf.com.de

## INDIA

### AARDWOLF SOUTH INDIA

- ☎ +91 97659 06007
- ✉ mumbai@aardwolf.co.in
- 🌐 www.aardwolf.co.in

## VIETNAM



### AARDWOLF VIETNAM

- 📍 1B, An Phu, Thuan An,  
Binh Duong, Vietnam.
- ☎ +84 274 371 2827438/39
- ✉ sales@aardwolf.com.au
- 🌐 www.aardwolf.com.au

