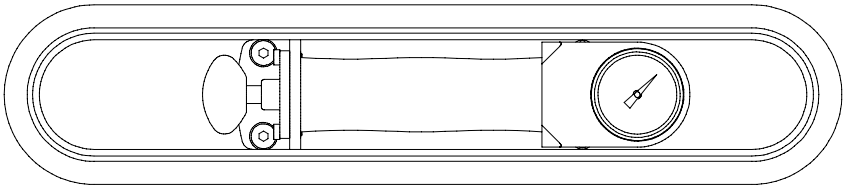


OVAL HAND VACUUM CUP

OHVC

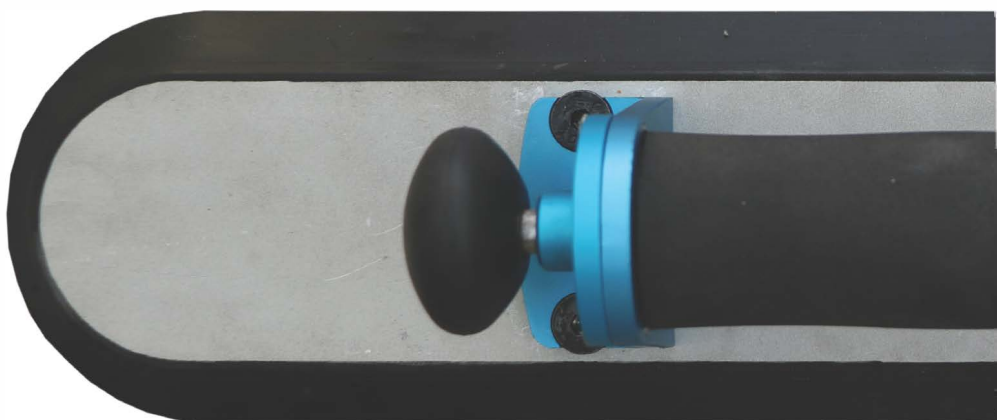


NEW

OWNER'S MANUAL





CONTENT

1. Introduction	02
2. Specifications & Features	02
3. Instructions for Operating	03
4. Inspections & Maintenance	04
5. Safety Warnings	04
6. Warranty	05
7. Part Drawing & Part List	06

1 INTRODUCTION:

The Aardwolf Oval Hand Vacuum Cup makes lifting and handling sheets, bars and tubes of a range of materials easy using simple manual power. Capable of attaching to curved and elongated surfaces it is ideal for metal, stone and glass material-handling, where it can be difficult to get adequate grip on bulky materials.

Built from durable, lightweight anodised aluminium with a soft sponge handle, the Oval Hand Vacuum Cup provides a safe ergonomic alternative to using slings or harnesses. The hand-operated piston pump removes the air from between the work-surface and the vacuum-cup seal, locking to the material, creating enough clamping force to easily handle large loads.

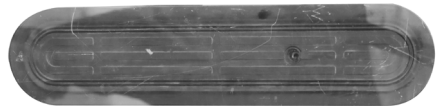
Any reasonably smooth airtight surface is enough to allow the vacuum seal to get a grip, and the moulded polyurethane vacuum seal will remain safe and secure, up to days at a time.

The built-in vacuum pressure gauge ensures a safe vacuum grip is present before handling the material. The internal check-valve keeps the vacuum force in effect until the release-valve is triggered by the user.

2 SPECIFICATIONS AND FEATURES:

2.1. Specifications:

- Oval pad diameter:
Length: 380 mm (14.96")
Width: 80 mm (3.14")
- Net weight: 1.3 kg (2.9 Lb)
- Work load limit: 100 kg (220 Lb)



2.2. Features:

- Rust-resistant parts withstand wet conditions associated with stone working.
- Manual, Minimal design does not require Batteries or External power. (Three pumps is enough to achieve maximum vacuum grip.)
- Oval style vacuum seal allows the handling of curved surfaces.
- Supplied with protective carrying case.

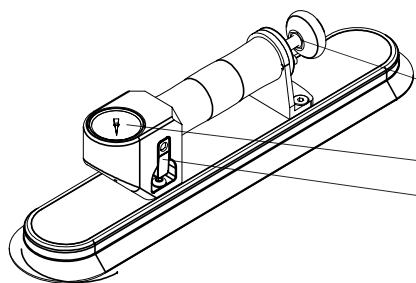


- For smooth flat surfaces



- Three pumps produce full vacuum

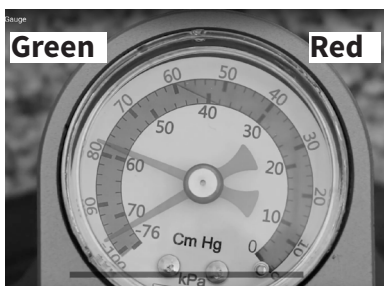
3 INSTRUCTIONS FOR OPERATING:



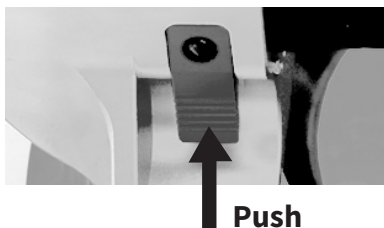
- Make sure that the cup and surface are free from dirt, debris or oil before use.
- Select only the proper size, type and weight of material to lift.
- The piston creates a vacuum between the rubber pad and the contact surface.
- The vacuum gauge monitors pressure.
- Releasing the lever allows the cup to disengage completely.



- Position the Hand Vacuum Cup in the desired location on the material.
- Manually pull the piston until the vacuum measures 85 kPa on the vacuum gauge. (Two to Three strokes should be sufficient).



- Before lifting or handling the material, ensure that the Vacuum Pressure Gauge is maintaining a safe working pressure:
 - If the indicator needle stays within the Green range, the device is working properly.
 - If the indicator needle drops back to the Red range, pull the piston one to two times to maintain vacuum safety.
- (Check the Seal and Surface are free from any dirt, debris or damage again if the indicator continues to show Red!)



- Move and lift the material to the desired position. Do not allow material to be lifted over personnel at any time!
- When the material is safely at the desired location, press the release lever to release the pressure in the cup.
- Do not lay the suction cup face down on any rough or contaminated surface.

4 INSPECTIONS AND MAINTENANCE:

Cleaning:

- Release the air vacuum from the cup face.
- Wipe the cup face clean.



Caution: DO NOT use lubricants or solvents to clean the rubber vacuum cup, as it will damage the cup face.

Inspections:

Check the unit regularly to make sure it does not exhibit the following faults:

- The edges of the rubber pad are cut or damaged.
- Cracks, Dents or other visible damage to the unit.
- Device has missing parts.
- Sluggish or dramatic changes in pump action.
- The rubber pad is perished or hardened.
- Repair any defects before using the unit.
(Contact Aardwolf Customer Service for any advice relating to Operation, Maintenance or Repair.)

Storage:

- Keep the hand vacuum cup in storage when not in use
- Store the cup in its storage case in clean, dry conditions and out of direct sunlight.

5 SAFETY WARNING:

Failure to observe these WARNINGS may damage to the Vacuum Cup, Resulting in Injury to Personnel or Damage to Property!

- Do not use the cup to lift loads that exceed the load capacity: 100kg (220 Lb)
- Safe vacuum pressure is indicated when the vacuum gauge needle is in the GREEN range.



- Do NOT attempt to lift load if the gauge is in the RED range. (Normal operating pressure is 85 kPa indicated.)



- Do not use solvents, gasoline or other harsh chemicals to clean the cup.
- Material must be smooth, flat and non-porous.



- Do not touch the release valve while lifting.
- Inspect the suction of the hand vacuum cup before each lifting task.

6 WARRANTY :

This product is warranted for one year from the date of purchase. This warranty does not cover normal wear and tear or damage resulting from any of the following:

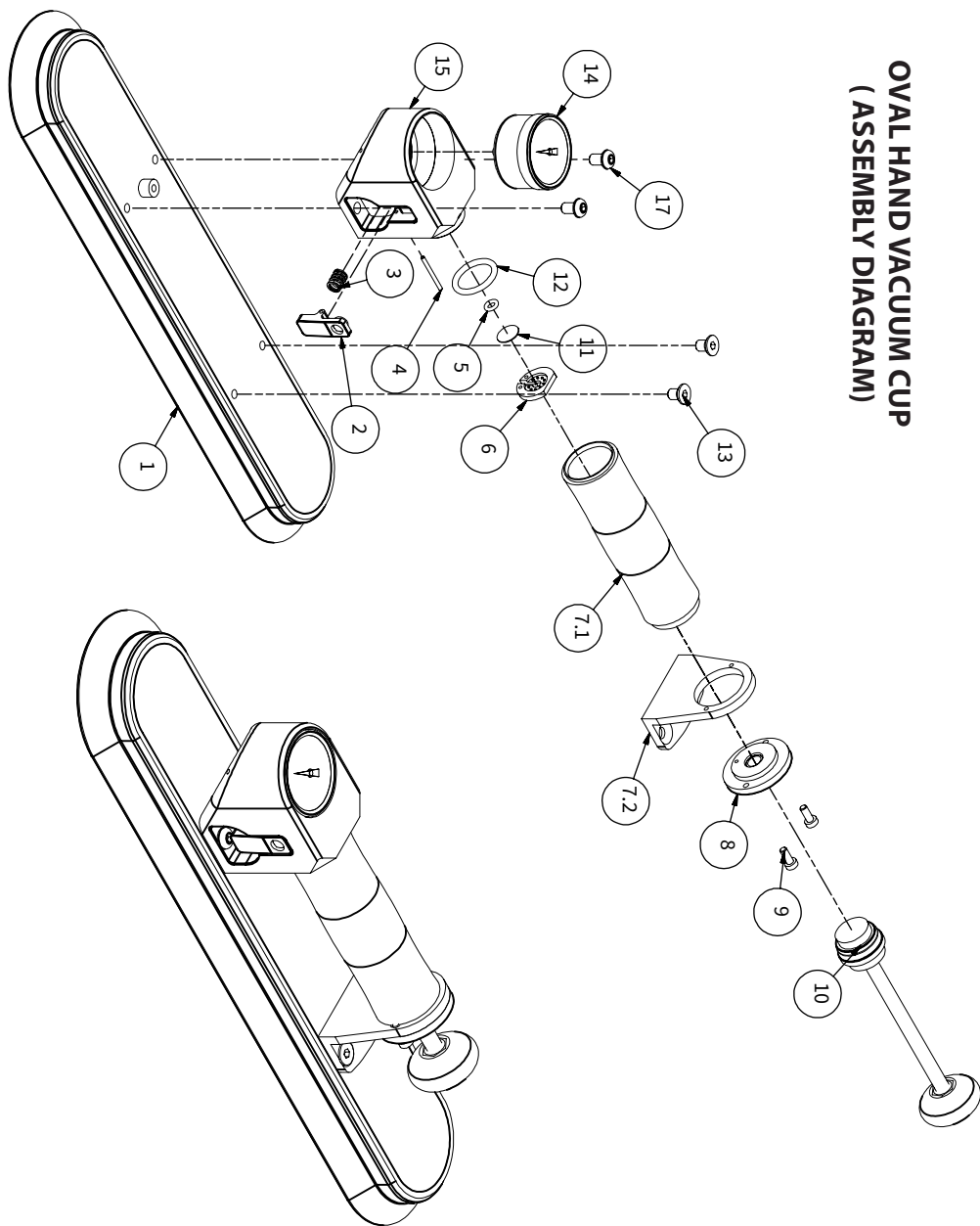
- Negligent use or misuse of the product.
- Use or application contrary to instructions.
- Modifying, Altering or attempting to Repair the product prior to authorisation from an Aardwolf factory representative.

At the time of delivery it is necessary for the User to check that the product has not been damaged during shipment.

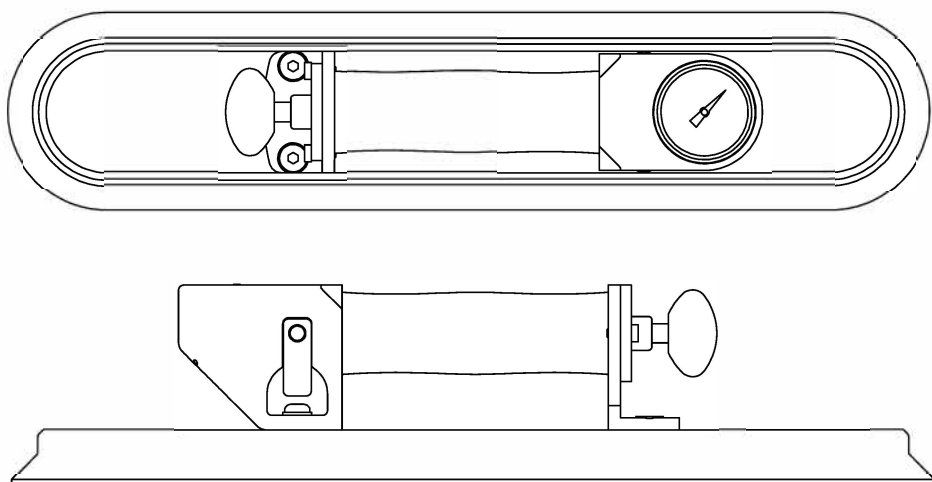
Any claims must be presented within eight days of the date of delivery of the product.

7 PART DRAWING & PART LIST:

**OVAL HAND VACUUM CUP
 (ASSEMBLY DIAGRAM)**



PARTS LIST		
No.	Name	Qty.
1	Oval vacuum cup - 100	1
2	Release Lever - Aluminium With Release Seal	1
3	Compress Spring ¹	1
4	Pin	1
5	O-ring D8.5x2	1
6	Locking Piece	1
7	Cylinder Set - No Left Hanging - Oval Pad	1
7.1	Cylinder With Handle	1
7.2	Right Hanging - Oval Pad	1
8	Cap With PB	1
9	Bolt M4 x 10	2
10	Piston Set	1
11	Seal	1
12	O-ring D27x3	1
13	Screw M6 x 10	2
14	Vacuum Gauge	1
15	End Pump - Oval Pad	1
17	Round Head - Bolt M6 x 10	2



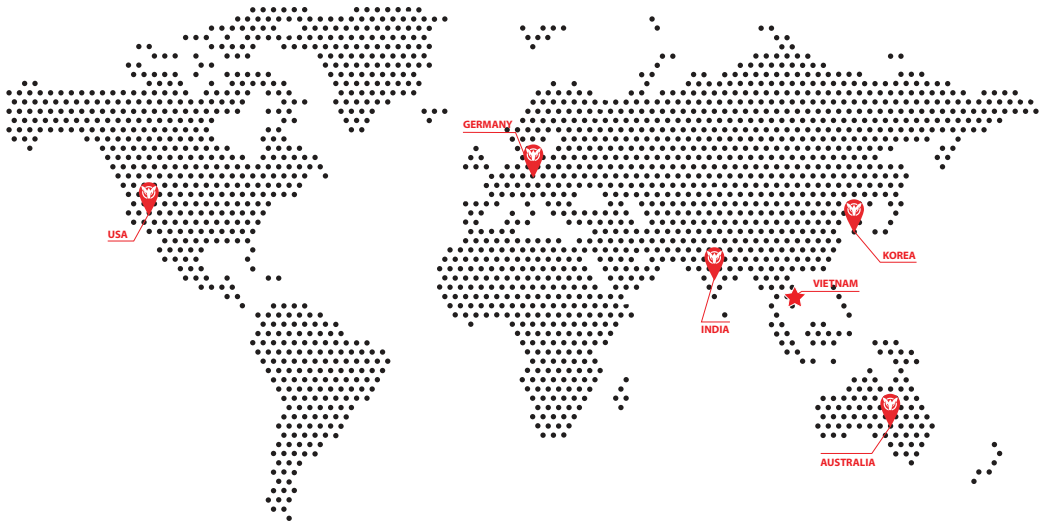


WATCH HERE

Easily scan the QR-code with your smart phone, choose product video and watch it.

AARDWOLF PRODUCT VIDEO

www.youtube.com/user/AardwolfGroup



VIETNAM

AARDWOLF VIETNAM

- 📍 1B, An Phu, Thuan An, Binh Duong, Vietnam.
- ☎ +84 0274 371 2840
- ✉ sales@aardwolf.com.au
- 🌐 www.aardwolf.com.au

KOREA

AARDWOLF KOREA

- 📍 284-2 Yatap-dong, Bundang-ku, Seongnam-shi, Kyungki-do,
- ☎ Korea. +82 6487 3949
- ✉ sales@aardwolf.kr
- 🌐 www.aardwolf.kr

AUSTRALIA

AARDWOLF AUSTRALIA

- 📍 2/106 Magowar Rd, Girraween NSW 2145, Australia.
- ☎ +61 0422 916 907
- ✉ enquiries@aardwolfaustralia.com
- 🌐 www.aardwolfaustralia.com

GERMANY

STONE GLASS EQUIPMENT UG

- 📍 Am Gutsteich 11, 08451 Crimmitschau/ Blankenhain, Germany.
- ☎ +49 366 0811 9236
- ✉ sales@aardwolf.com.de
- 🌐 www.aardwolf.com.de

INDIA

AARDWOLF KISHANGARH

- 📍 Harmara Road, Industrial Area, Madanganj, Kishangarh, Rajasthan India / Pin no. 305801
- ☎ Tel: +91 9785016771
- ✉ Email: sales@aardwolf.co.in
- 🌐 Web: www.aardwolf.co.in

AARDWOLF BENGALURU

- 📍 No: 6, Sharma Complex, 3rd Cross, Ganesha Block, Dinnur Main Road, R. T. Nagar P.O Bengaluru-560032
- ☎ +91 98451 62959/ 91 9901724600
- ✉ bengaluru@aardwolf.co.in
- 🌐 www.aardwolf.co.in