



TWISTER MOTORIZED SWIVEL SHACKLE

OWNER'S MANUAL

PRODUCT CODE : MSS



Content

Introduction ► Specifications & Features ► Dimensions
Safety instructions ► Parts drawing & Parts list ► Instructions for use
Inspections, Maintenance & Repair ► Warranty



AUG. 2020

+84 274 371 2840 | www.aardwolf.com.au | sales@aardwolf.com.au

1. INTRODUCTION

Aardwolf has created a new innovative device, the Lifter Twister. This device works with the Aardwolf Slab and Glass Lifters, forklifts and truck cranes to lift and move stone and glass sheets. The Twister is equipped a remote control that allows the user to independently perform all of the lifting and moving operations safer, faster and more conveniently without the assistance of a handler on the ground. The user can observe and manipulate the slab's movement right from the forklift by using the remote control with one hand.

2. SPECIFICATIONS & FEATURES

2.1 SPECIFICATIONS

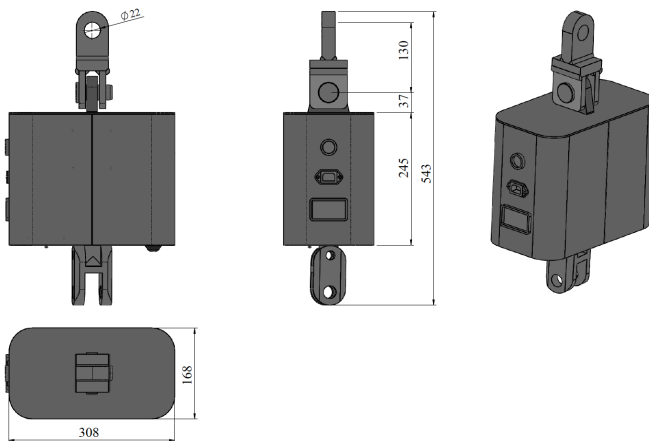
PRODUCT CODE	LIFTING CAPACITY	NET WEIGHT	GROSS WEIGHT	PACKAGING DIMENSIONS
MSS	1200 kgs	30.07 kgs	35.5 kgs	350 x 205 x 480 mm

2.2 FEATURES

- Allows moving and handling slabs as a one-man operation.
- Can be rotated 360-degree in either direction by remote control.
- The remote control is operated via radio frequency with a distance of up to a 100m when not separated by obstacles, walls and other opaque barriers.
- 9V rechargeable battery for the remote control with the usage time of up to one year.
- Non-stop working time of 12 hours.
- Battery level indicator.
- Reduces the risk of injury for the worker. They can stay on their forklift truck and control the operations outside the fall zone.



3. DIMENSIONS OF THE TWISTER



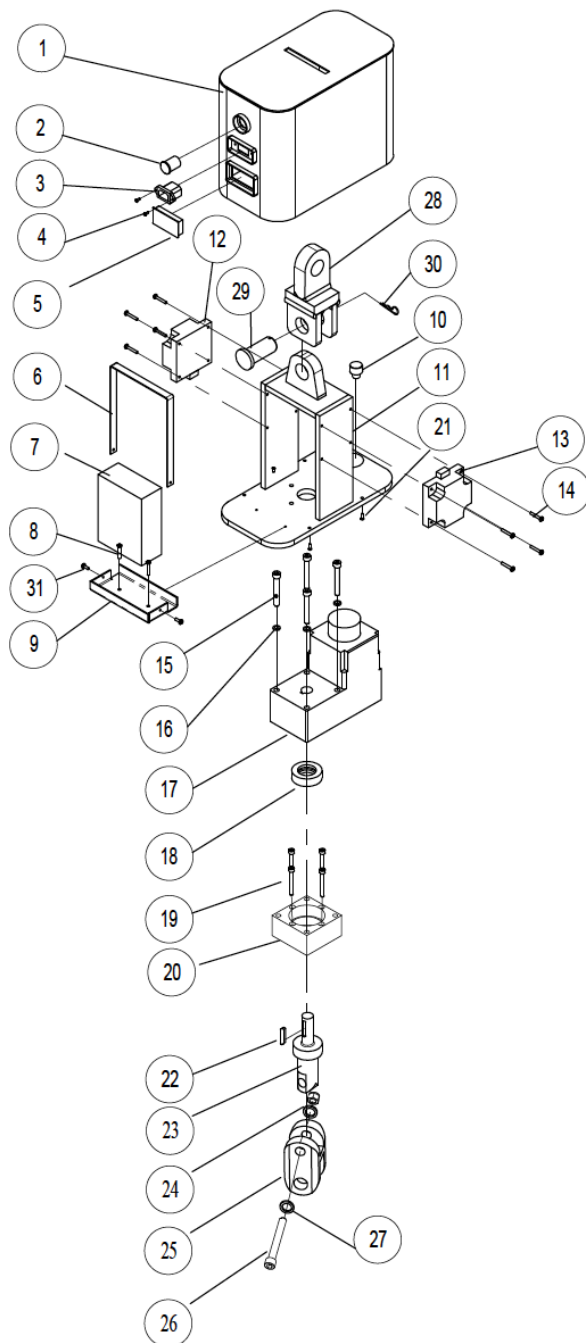
4. SAFETY INSTRUCTIONS

Please make sure you read the user's manual completely before operating the Twister:

- Ensure that the manual is available during operation.
- Carefully read the lifter manual before operating.
- Determine whether the capacity of a crane or hoist is suitable for use with the Twister.
- Always ensure the Twister is attached tightly with a crane or forklift boom.
- DO NOT exceed the working load limit shown on the label of the Twister to eliminate any risks for the user, material and attachment or the lifter.
- DO NOT raise a load over people or allow anyone to stand or reach beneath a suspended load.
- Perform the load test to ensure the Twister (combined with lifter) is safe before using.
- Inspect the battery level before lifting the load.
- Make sure that there are no obstructions during the working process.
- Operate only by competent and authorised personnel.
- Never operate the Twister if the labels for load capacity or any other warnings are missing or obscure and unclear.
- Never use the Twister in dangerous environments.



5. PARTS DRAWING



5. PARTS LIST

CODE	POSITION	DESCRIPTION	QTY
MSS-001	1	Cover	01
MSS-002	2	Shut on/off	01
MSS-003	3	Female socket	01
MSS-004	4	Pan head cross crew M3x8	04
MSS-005	5	Battery Display	01
MSS-006	6	U bracket	01
MSS-007	7	Battery	01
MSS-008	8	Pan head cross crew M3x15	06
MSS-009	9	Battery bracket	01
MSS-010	10	Light	01
MSS-011	11	Main frame	01
MSS-012	12	Drive	01
MSS-013	13	Control circuit	02
MSS-014	14	Pan head cross crew M4x30	08
MSS-015	15	Socket head cap M8x80	04
MSS-016	16	Washer M8	04
MSS-017	17	Motor 24v	01
MSS-018	18	Bearing 51207	01
MSS-019	19	Socket head cap M6x50	04
MSS-020	20	Joint bearing	01
MSS-021	21	Pan head cross crew M4x15	04
MSS-022	22	Key	01
MSS-023	23	Main shaft	01
MSS-024	24	Nylon nut M16	01
MSS-025	25	Hook shape H	01
MSS-026	26	Socket head cap M16x90	01
MSS-027	27	Washer Ø16	02
MSS-028	28	Coupling	01
MSS-029	29	Coupling pin	01
MSS-030	30	Cotter pin	01
MSS-031	31	Hex socket button head M4x10	02



6. OPERATING INSTRUCTIONS

Step 1: Hook the Twister to a crane or Aardwolf's Forklift Boom and then hook the Aardwolf Lifter to the Twister for starting the lifting process.

NOTE: If the Twister is hooked to a crane, the operator needs to use the bow shackle to attach it into the lifting eyes of the Twister.

Step 3: Turn the power button on, which is located on the body of the Twister.

Step 4: Inspect the battery level (Battery Display) to make sure that it is fully charged.

Step 5: Use the remote control of the Twister to rotate the lifter system so that it is aligned with the slab.

Step 6: Place the lifter system onto the slab and then move the slab to the desired location.

NOTE:

- If you want to rotate the lifter system to the right direction, you just press the "A" button on the remote control and then lifter system will rotate.
- If you want to rotate the lifter system to the left direction, you just press the "B" button on the remote control and this lifter system will rotate.

7. INSPECTIONS AND MAINTENANCE

The Twister does not require maintenance on a routine basis. However, the user needs to inspect its condition before using. This could be performed every day, every week, every month, and whenever the fork has the indicated faults, damage, or abnormalities.



8. WARRANTY

The Twister is warranted for one year from the date of purchase to be free of manufacturing defects in material and workmanship. This warranty does not cover normal wear of parts or damages resulting from any of the following: negligent use or misuse of the product, use or application contrary to installation instructions, or disassembly, repair or alteration by any person prior to authorization from a factory representative.





AMERICA



AARDWOLF AMERICA

- 📍 19201 S Reyes Avenue, Unit C7
Compton California, 90221
- ☎ (562) 553-6050
- ✉ leo@aardwolfusa.com
- 🌐 www.aardwolfusa.com

INDIA



AARDWOLF NORTH INDIA

- 📍 Harmara Road, Industrial Area,
Madanganj, Kishangarh, Rajasthan
India / Pin no. 305801
- ☎ Tel: +91 93584 48474
- ✉ sales@aardwolf.co.in
- 🌐 Web: www.aardwolf.co.in

AUSTRALIA



AARDWOLF AUSTRALIA

- 📍 1/5 Stanton Road,
Seven Hills NSW 2147
- ☎ +02 9838 8427
- ✉ enquiries@aardwolfaustralia.com
- 🌐 www.aardwolfaustralia.com

INDIA

AARDWOLF CENTRAL INDIA

- 📍 No: 6, Sharma Complex, 3rd Cross,
Ganesha Block, Dinnur Main Road,
R. T. Nagar P.O Bengaluru-560032
- ☎ +91 99017 24600
- ✉ bengaluru@aardwolf.co.in
- 🌐 www.aardwolf.co.in

GERMANY



STONE GLASS EQUIPMENT UG

- 📍 Am GutstKch 11, 8451Crimmitschau
Blankenhain, Germany.
- ☎ +49 366 0811 9236
- ✉ sales@aardwolf.com.de
- 🌐 www.aardwolf.com.de

INDIA

AARDWOLF SOUTH INDIA

- ☎ +91 97659 06007
- ✉ mumbai@aardwolf.co.in
- 🌐 www.aardwolf.co.in

VIETNAM



AARDWOLF VIETNAM

- 📍 1B, An Phu, Thuan An,
Binh Duong, Vietnam.
- ☎ +84 274 371 2827438/39
- ✉ sales@aardwolf.com.au
- 🌐 www.aardwolf.com.au

