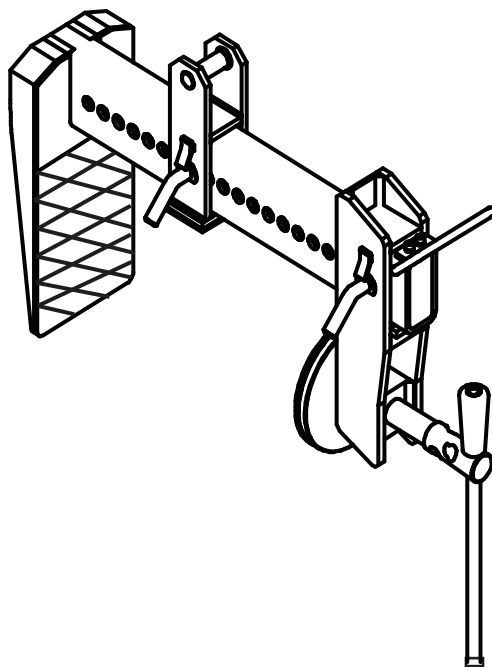




# MONUMENT CLAMP/LIFTER

## OWNER'S MANUAL

**PRODUCT CODE: GPM1000**



## CONTENTS

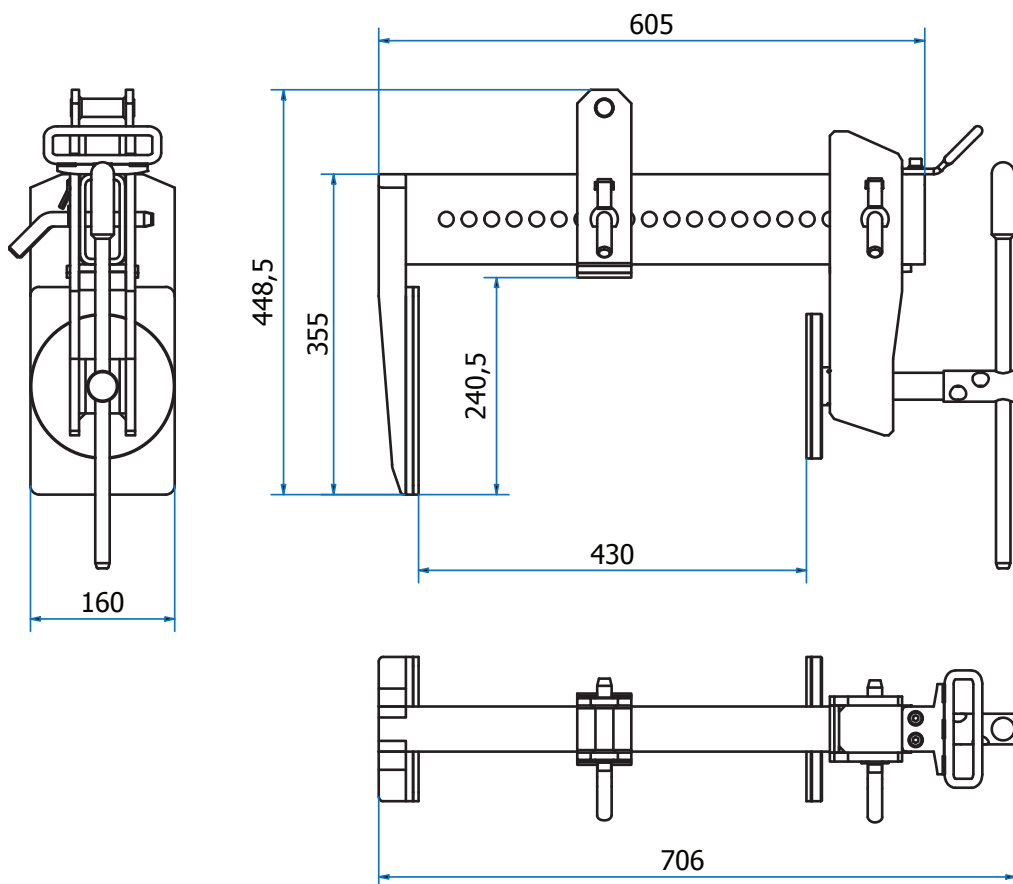
- ① SPECIFICATIONS    ② SAFETY INSTRUCTIONS    ③ PARTS DRAWING    ④ PART LIST
- ⑤ INSTRUCTIONS FOR USE    ⑥ INSPECTION, MAINTENANCE & REPAIR    ⑦ WARRANTY

A great piece of equipment for handling stone monuments. Works with any lifting device. No more struggling with straps and boards. It will not damage monuments.



# 1. SPECIFICATIONS

	<b>Metric</b> (mm-kg)	<b>Imperial</b> (inch-lb)
Grip range	0 - 407	0 - 16"
Maximum jaw opening	0 - 430	0 - 17"
Working load limit	1000	2204
Net weight	33	73
Gross weight	36	79
Packaging dimensions	660 X 200 X 400	26" X 7.9" X 15.7"

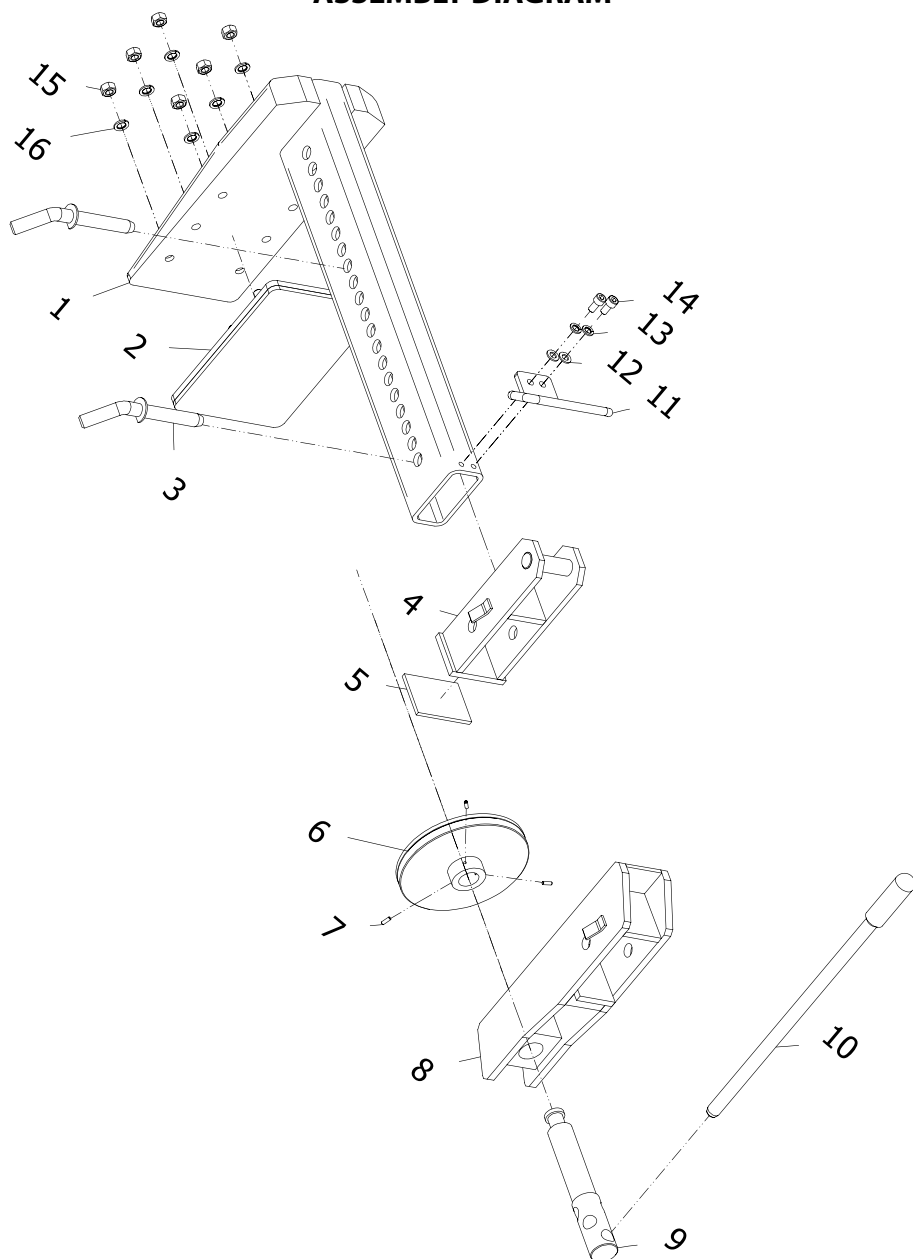


## 2. SAFETY INSTRUCTIONS

- Carefully consider all safety regulations and existing standards and codes in your country for hoisting operations.
- Permission to work with the Monument Lifter should only be given to people who are suitably trained, competent and acquainted with this operating manual and safety regulations.
- Inspect clamp. If the clamp is worn or damaged, do not use.
- Determine the weight of the slab to be lifted. Do not exceed W.L.L (Working Load Limit) shown on clamp. Slab thickness must be within grip range specified by the manufacture
- Do a risk assessment of the material that is being lifted. The slab must be free of fractures and other defects that may cause the slabs to fall apart while being lifted.
- All personnel must stand clear of the load while it is being lifted or moved.
- The grip depends on friction. Check that the rubber pads are free from dirt, grease and other substances that may reduce their effectiveness.
- Do not lift wet slab. The grip depends on friction. Lifting wet slab may cause the rubber pads to lose their grip.
- Position the clamp so that it is square with the slab to be lifted, and in the centre of the slab so that the load is balanced.
- Make sure that slab is inserted to the full depth into the opening of the clamp.
- Take up slab slowly. A trial tensioning of load will usually indicate proper balance
- Do not lower clamp onto other slabs or material while lowering slab into racks, as clamp will release its load.

### 3. PART DRAWING

## MONUMENT CLAMP/LIFTER GPM1000 ASSEMBLY DIAGRAM



## 4. PART LIST

### MONUMENT CLAMP/LIFTER GPM1000 ASSEMBLY DIAGRAM

PARTS LIST			
No.	Code	Name Parts	Qty.
1	GPM1000-01	Body	1
2	GPM1000-02	Clamping Jaw With Theaded Pin And Rubber	1
3	GPM1000-03	Catch	2
4	GPM1000-04	Support	1
5	GPM1000-05	Support-rubber	1
6	GPM1000-06	Movable Jaw	1
7	GPM1000-07	Set Screw M4 x 12	3
8	GPM1000-08	Clamping Bar	1
9	GPM1000-09	Clamping Screw	1
10	GPM1000-10	Torque arm	1
11	GPM1000-11	Handle	1
12	GPM1000-12	Washer M6	2
13	GPM1000-13	Spring Washer M6	2
14	GPM1000-14	Bolt M6x16	2
15	GPM1000-15	Nut M10	6
16	GPM1000-16	Spring Washer M10	6

## 5. INSTRUCTIONS FOR USE

### Important!

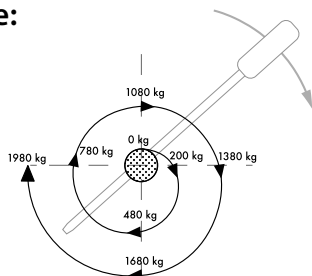
In order to protect people from getting injured it is important to follow some general safety directions while using hoisting accessories.

- Read the operation manual carefully before you use hoisting accessories.
- Make sure that the operation manual is always available at the place where the hoisting accessories are used.
- Give permission to work with hoisting accessories only to people who are suitably trained and competent.

## 5. INSTRUCTIONS FOR USE

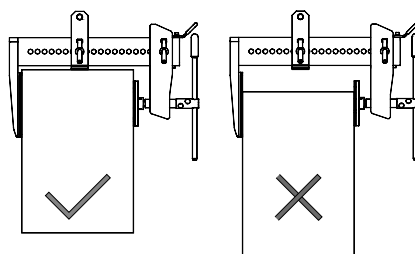
- Wear safety equipment, like helmet, gloves and safety boots.
- Never leave a lifted load unsupervised.
- Lift a load only as much as is really necessary.
- Do not get underneath the load and do not permit others to do so.
- Connections or individual parts of hoisting accessories should never be able to loosen by themselves.
- Hoisting accessories must be stored in a place where they are protected against weather conditions and aggressive substances.
- Defect hoisting accessories are no longer to be used.
- Repairs and checks are to be made only by qualified people.
- Position the clamp so that it is square with the slab to be lifted, and keep the bar bumper on centre of the stone.
- Ensure that the torque arm is sufficiently tightened.

### Note:



*When using the hand lever to apply pressure to the jaws, ensure the closing force is a minimum of twice the weight of the load being hoisted.*

### Correct and incorrect method of gripping slabs.



## 6. INSPECTION, MAINTENANCE & REPAIR

There are two types of inspections - in-service and periodic.

### In-service:

A visual inspection prior to each use. This implies that prior to each lift, the user has a good look over the lifting clamp to ensure that there is no significant damage or wear, and that the working load limit tag or markings are fitted and limit legible. At this point, if any defects are noted, the lifting clamp should be withdrawn from service, and inspected by a competent person who can make a decision on whether to use, repair or discard the lifting clamp.

## 6. INSPECTION, MAINTENANCE & REPAIR

### Periodic:

The lifting clamps should be checked and tested every 12 months by a competent person who has been trained and who can make a decision on whether to use, repair or discard the lifting clamp. These inspections also need to be adequately documented and are mandatory in many countries. Always use original spare parts when carrying out repairs or maintenance.

### CE - DECLARATION OF CONFORMITY

We declare that the product is in conformity with the following standard: The Machinery Directive 2006/42/EC.

**Note:** It is the responsibility of the user to adapt to state or local laws. The end user is responsible to use the equipment safely in a manner that it is designed for and within the rated capacity of the unit.

## 7. WARRANTY

At the time of delivery it is necessary to check that the clamp has not been damaged during shipment. Any claims must be presented within 8 days of the date of delivery of the product.

We grant you 12 months warranty on the Aardwolf Scissor Lifter countered from the day of purchase.

The warranty coverage is not applicable:

- The lifter is handled incorrectly during manoeuvring.
- The operator fails to comply with the instructions in this booklet.
- The lifter's maximum permissible capacity is exceeded.
- The specifications for slab thickness are not followed.
- Damages are due to inadequate maintenance and inspections.
- Damage is due to improper storage.
- Repairs were performed by the user without our permission.
- Non-original spare parts were used.



## WE ARE PROVIDING

SIMPLE, REALIABLE, COST SAVING  
AND AWESOME IDEAS FOR YOUR BUSINESS



AARDWOLF PRODUCT VIDEO  
[www.youtube.com/user/AardwolfGroup](https://www.youtube.com/user/AardwolfGroup)



## FIND YOUR NEAREST AARDWOLF FACTORY SERVICE CENTRE NEAR YOU

### AUSTRALIA

1/5 Stanton Road, Seven Hills NSW 2147

Tell: 02 9838 8427

[www.aardwolfaustralia.com](http://www.aardwolfaustralia.com) Email: [enquiries@aardwolfaustralia.com](mailto:enquiries@aardwolfaustralia.com)

**BULGARIA** Str.Usta Kolio Ficheto 33 Tell: +359 887 933 754

### INDIA

Harmara Road, Industrial Area, Madanganj, Kishangarh, District- Ajmer,  
Rajasthan India 305801

Web: [www.aardwolf.co.in](http://www.aardwolf.co.in)

Tell: +91 73000 68444

Email: [sales@aardwolf.co.in](mailto:sales@aardwolf.co.in)

### GERMANY

Schulze-Delitzsch-Weg 2, 33175 Bad Lippspringe

Tell: 05252 8382830

### USA

19201 South Reyes Avenue, Suite A3 Rancho Dominguez California,

Tell: (562) 553-6050

90221

Web: [www.aardwolfusa.com](http://www.aardwolfusa.com)

Email: [leo@aardwolfusa.com](mailto:leo@aardwolfusa.com)

### VIETNAM

1B, An Phu, Thuan An City, Binh Duong Province, Vietnam

Tell: +84 933 077 995

Web: [www.aardwolf.com.au](http://www.aardwolf.com.au)

Email: [info@aardwolf.com.au](mailto:info@aardwolf.com.au)

