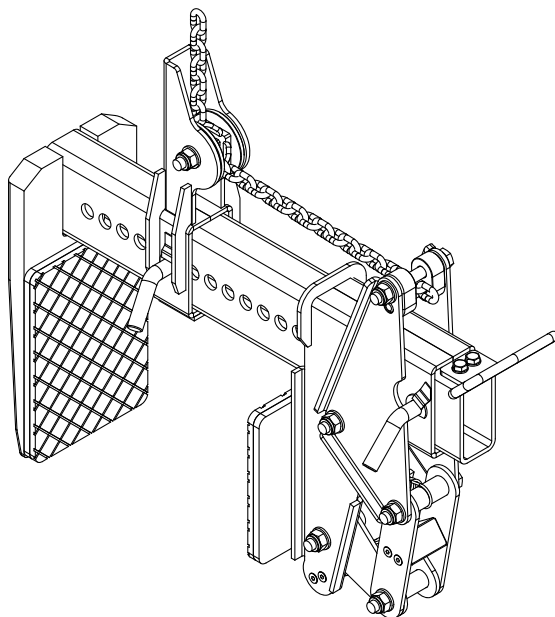




# MONUMENT CLAMP/LIFTER (AUTOMATIC)

**OWNER'S MANUAL****PRODUCT CODE: GPM1500-A**

## CONTENTS

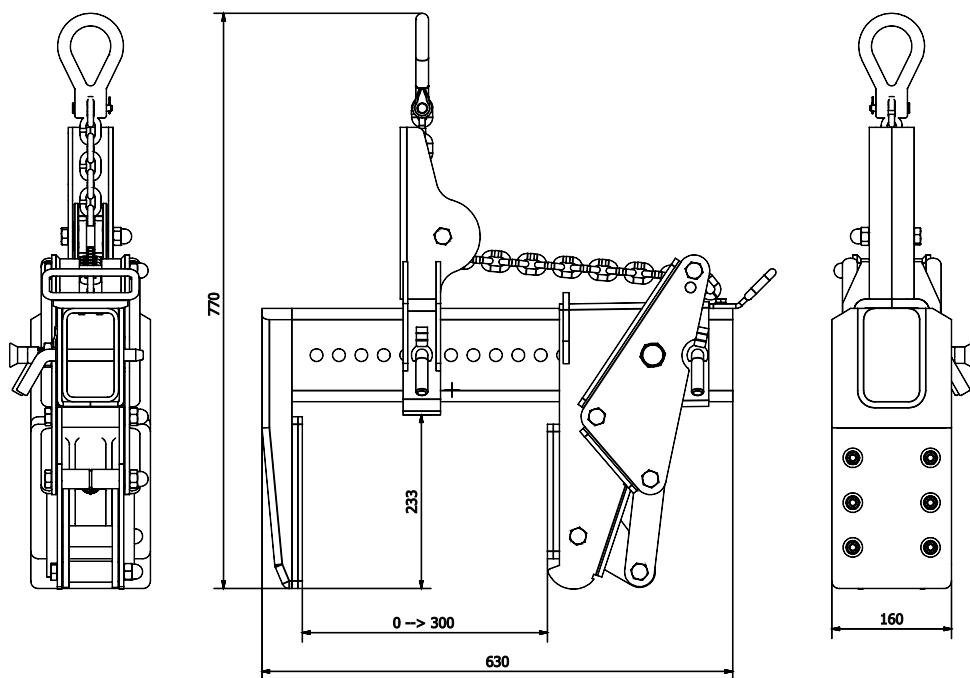
- 1 SPECIFICATIONS
- 2 SAFETY INSTRUCTIONS
- 3 PART DRAWING
- 4 PART LIST
- 5 INSTRUCTIONS FOR USE
- 6 INSPECTION, MAINTENANCE & REPAIR
- 7 WARRANTY

Works with any lifting device. The Aardwolf Monument/Lifter (Automatic) is ideal for lifting and setting concrete, stone and marble building fascia. It is useful for moving and setting heavy or awkward retaining wall blocks and slabs. The slim profile allows it to set material in tight places. The clamping jaw and the center of gravity are easily and quickly adjustable by means of the locking pins. The jaws of the lifter are lined with vulcanized rubber to ensure a safe and non-marking grip. The clamps are gravity controlled, which open when rested and close when lifted.



## 1. SPECIFICATIONS

	<b>Metric</b> (mm-kg)	<b>Imperial</b> (inch-lb)
Grip range	20 - 300	1" - 12"
Working load limit	1500	3307
Net weight	52	115
Gross weight	54	119
Packaging dimensions	700X195X440	27.6"X7.8"X17.3"

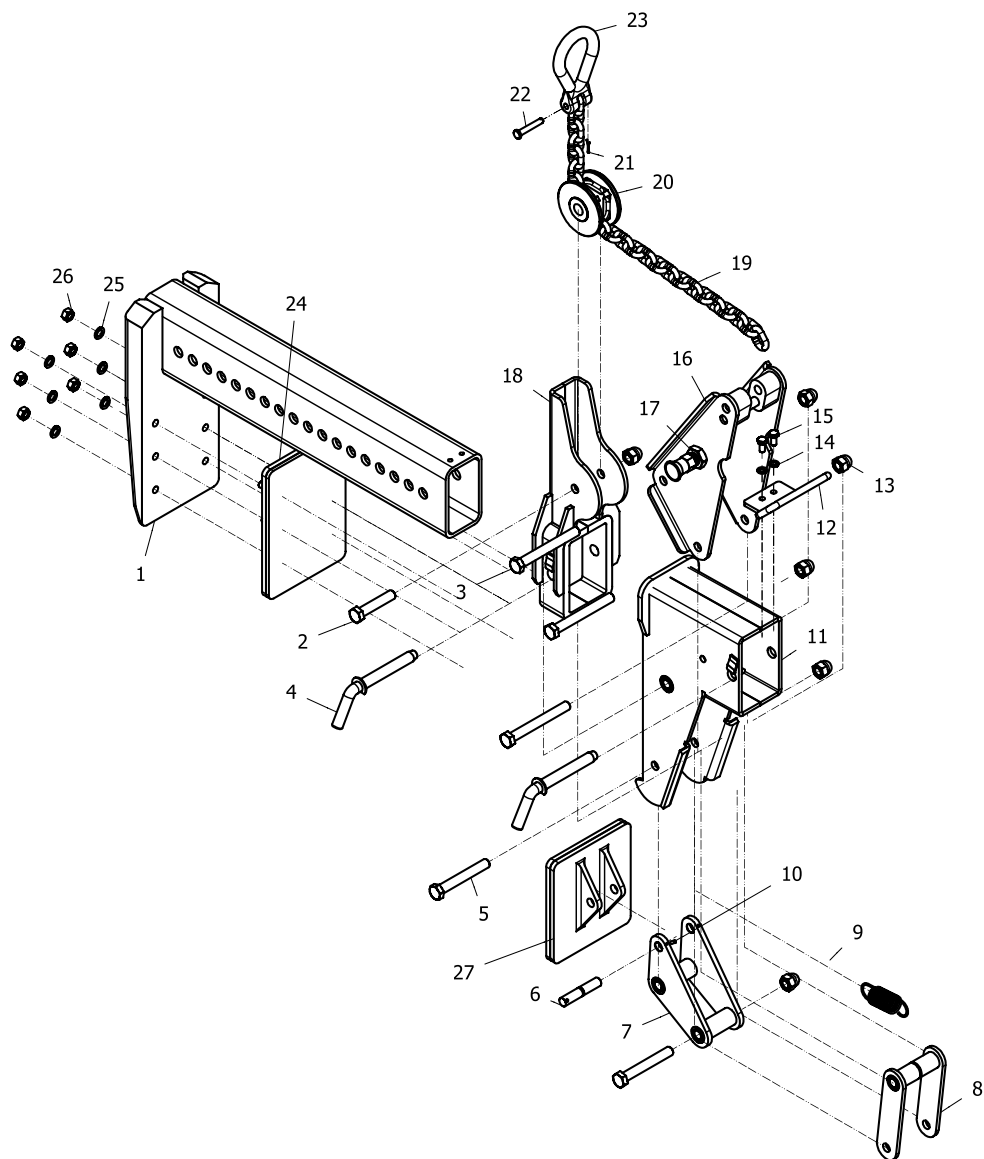


## 2. SAFETY INSTRUCTIONS

- Carefully consider all safety regulations and existing standards and codes in your country for hoisting operations.
- Permission to work with the Monument Lifter should only be given to people who are suitably trained, competent and acquainted with this operating manual and safety regulations.
- Inspect clamp. If the clamp is worn or damaged, do not use.
- Determine the weight of the slab to be lifted. Do not exceed W.L.L (Working Load Limit) shown on clamp. Slab thickness must be within grip range specified by the manufacture
- Do a risk assessment of the material that is being lifted. The slab must be free of fractures and other defects that may cause the slabs to fall apart while being lifted.
- All personnel must stand clear of the load while it is being lifted or moved.
- The grip depends on friction. Check that the rubber pads are free from dirt, grease and other substances that may reduce their effectiveness.
- Do not lift wet slab. The grip depends on friction. Lifting wet slab may cause the rubber pads to lose their grip.
- Position the clamp so that it is square with the slab to be lifted, and in the centre of the slab so that the load is balanced.
- Make sure that slab is inserted to the full depth into the opening of the clamp.
- Take up slab slowly. A trial tensioning of load will usually indicate proper balance
- Do not lower clamp onto other slabs or material while lowering slab into racks, as clamp will release its load.

### 3. PART DRAWING

## MONUMENT CLAMP/LIFTER (AUTOMATIC) GPM1500-A ASSEMBLY DIAGRAM



## 4. PART LIST

### MONUMENT CLAMP/LIFTER (AUTOMATIC) GPM1500-A ASSEMBLY DIAGRAM

PARTS LIST			
No.	Code	Name Parts	Qty.
1	GPM1500A-01	Body	1
2	GPM1500A-02	Bolt M14 x 70	1
3	GPM1500A-03	Bolt M14 x 120	3
4	GPM1500A-04	Catch	2
5	GPM1500A-05	Bolt M14 x 100	2
6	GPM1500A-06	Pin	1
7	GPM1500A-07	Triangle Intermediate Stage	1
8	GPM1500A-08	Intermediate Stage	1
9	GPM1500A-09	Extension Spring	1
10	GPM1500A-10	Screw M4 x 10	1
11	GPM1500A-11	Movable Jaw Arm	1
12	GPM1500A-12	Handle	1
13	GPM1500A-13	Cap Nut M14	6
14	GPM1500A-14	Spring Washer A8	2
15	GPM1500A-15	Screw M8 x 16	2
16	GPM1500A-16	Triangle Driving Link	1
17	GPM1500A-17	Locking Pin	1
18	GPM1500A-18	Hanging Frame	1
19	GPM1500A-19	Link Chain 8mm Grade 8)	25
20	GPM1500A-20	Roller Chain	1
21	GPM1500A-21	Split Pin 1.6 x 16	1
22	GPM1500A-22	Clevis pins with head 8 x 50	1
23	GPM1500A-23	Lug Link 1,5 Tons	1
24	GPM1500A-24	Clamping Jaw With T headed Pin and Rubber	1
25	GPM1500A-25	Spring Washer M10	6
26	GPM1500A-26	Nut M10	6
27	GPM1500A-27	Movable Jaw With Rubber	1

## 5. INSTRUCTIONS FOR USE

### **Important!**

In order to protect people from getting injured it is important to follow some general safety directions while using hoisting accessories.

- Read the operation manual carefully before you use hoisting accessories.
- Make sure that the operation manual is always available at the place where the hoisting accessories are used.
- Give permission to work with hoisting accessories only to people who are suitably trained and competent.
- Wear safety equipment, like helmet, gloves and safety boots.
- Never leave a lifted load unsupervised.
- Lift a load only as much as is really necessary.
- Do not get underneath the load and do not permit others to do so.
- Connections or individual parts of hoisting accessories should never be able to loosen by themselves.
- Hoisting accessories must be stored in a place where they are protected against weather conditions and aggressive substances.
- Defect hoisting accessories are no longer to be used.
- Repairs and checks are to be made only by qualified people.
- Position the clamp so that it is square with the slab to be lifted, and keep the bar bumper on centre of the stone.
- Slide the grips to the width of block to be picked up.
- With the Lifter resting on the load, and hoist tension released. Raise the hoist to allow the Lifter pads to close onto load
- Pull the locking pin disengages from the locked open position. Lift and move the load to the desired location.

## 6. INSPECTION, MAINTENANCE & REPAIR

There are two types of inspections - in-service and periodic.

### **In-service:**

A visual inspection prior to each use. This implies that prior to each lift, the user has a good look over the lifting clamp to ensure that there is no significant damage or wear, and that the working load limit tag or markings are fitted and limit legible. At this point, if any defects are noted, the lifting clamp should be withdrawn from service, and inspected by a competent person who can make a decision on whether to use, repair or discard the lifting clamp.

## 6. INSPECTION, MAINTENANCE & REPAIR

### Periodic:

The lifting clamps should be checked and tested every 12 months by a competent person who has been trained and who can make a decision on whether to use, repair or discard the lifting clamp. These inspections also need to be adequately documented and are mandatory in many countries. Always use original spare parts when carrying out repairs or maintenance.

### CE - DECLARATION OF CONFORMITY

We declare that the product is in conformity with the following standard: The Machinery Directive 2006/42/EC.

**Note:** It is the responsibility of the user to adapt to state or local laws. The end user is responsible to use the equipment safely in a manner that it is designed for and within the rated capacity of the unit.

## 7. WARRANTY

At the time of delivery it is necessary to check that the clamp has not been damaged during shipment. Any claims must be presented within 8 days of the date of delivery of the product.

We grant you 12 months warranty on the Aardwolf Scissor Lifter countered from the day of purchase.

The warranty coverage is not applicable:

- The lifter is handled incorrectly during manoeuvring.
- The operator fails to comply with the instructions in this booklet.
- The lifter's maximum permissible capacity is exceeded.
- The specifications for slab thickness are not followed.
- Damages are due to inadequate maintenance and inspections.
- Damage is due to improper storage.
- Repairs were performed by the user without our permission.
- Non-original spare parts were used.



## USA



### AARDWOLF USA

- 📍 19201 S Reyes Avenue, Unit C7  
Compton California, 90221
- ☎ (562) 553-6050
- ✉ leo@aardwolfusa.com
- 🌐 www.aardwolfusa.com

## INDIA



### AARDWOLF NORTH INDIA

- 📍 Harmara Road, Industrial area,  
Madanganj, Kishangarh, Rajasthan n  
India / Pin no. 305801
- ☎ Tel: +91 93584 48474
- ✉ sales@aardwolf.co.in
- 🌐 Web: www.aardwolf.co.in

## AUSTRALIA



### AARDWOLF AUSTRALIA

- 📍 1/5 Stanton Road,  
Seven Hills NSW 2147
- ☎ +02 9838 8427
- ✉ enquiries@aardwolfaustralia.com
- 🌐 www.aardwolfaustralia.com

## INDIA

### AARDWOLF SOUTH INDIA

- 📍 # 9/27, Ground Floor, 5th Main Road,  
Ganesha Block, Sultanpalya,  
RT Nagar Post, Bengaluru-560 032
- ☎ Mob: +91 99017 24600
- ✉ bengaluru@aardwolf.co.in
- 🌐 www.aardwolf.co.in

## GERMANY



### STONE GLASS EQUIPMENT UG

- 📍 Am Gutstfch 11, 8451 Crimmitschau  
Blankenhain, Germany.
- ☎ +49 366 0811 9236
- ✉ sales@aardwolf.com.de
- 🌐 www.aardwolf.com.de

## INDIA

### AARDWOLF CENTRAL INDIA

- ☎ Mob: 91 97659 06007
- ✉ mumbai@aardwolf.co.in
- 🌐 www.aardwolf.co.in

## VIETNAM



### AARDWOLF VIETNAM

- 📍 1B, An Phu, Thuan An,  
Binh Duong, Vietnam.
- ☎ +84 274 371 2827438/39
- ✉ sales@aardwolf.com.au
- 🌐 www.aardwolf.com.au

