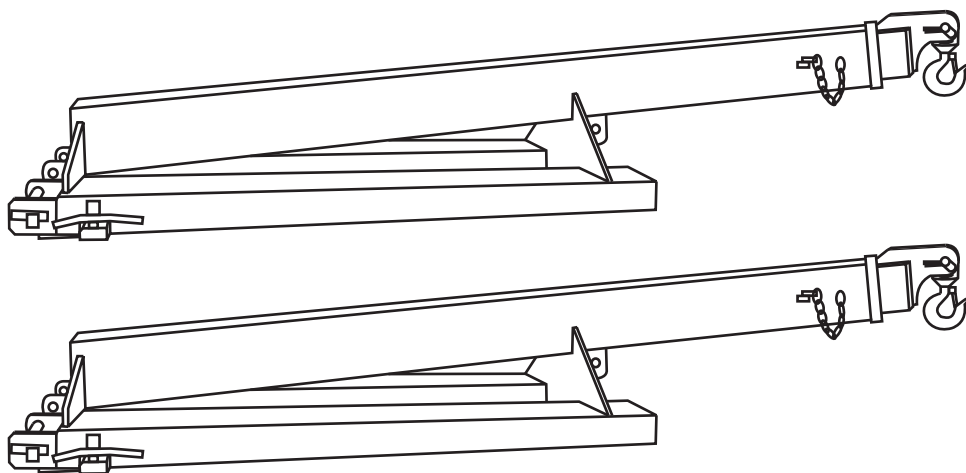




AARDWOLF FORKLIFT BOOM 2720

OWNER'S MANUAL

PRODUCT CODE: FB1-2720



CONTENTS

SAFETY PRECAUTIONS ► **INSTALLATION INSTRUCTIONS** ► **BEFORE OPERATION**

INSTRUCTIONS FOR USE ► **PARTS DRAWING & PART LIST** ► **CENTER OF GRAVITY DIAGRAM**

LOAD CAPACITY CHART ► **CENTER OF GRAVITY DIAGRAM** ► **CERTIFICATE OF ASSURANCE** ► **WARRANTY**

The Forklift Boom 2720 (FB1-2720) is made from high-grade Australian rectangular tube steel, AS1163-450 LO, which ensures strength, reliability, and safety. The Forklift Booms complement the patented range of Aardwolf lifting clamps. The Forklift Boom FB1-2720 is a telescoping two section rectangular tube steel boom for use on 2 tonnes and 2.5-tonne forklift trucks. It offers versatility with maximum visibility for the driver.



SAFETY PRECAUTIONS

Read the owner's manual before operating unit:

1. Always secure the Aardwolf Forklift Boom to fork truck carriage with locking bolts & restraint pins.
2. Never stand underneath the lifting device when in use.
3. Be sure fork mast is tilted back toward the driver.
4. The forklift will become unstable and liable to tip forward if the forklift is overloaded. A safe working load will vary according to lift truck capacity. Check the load capacity of the forklift for being used.
5. Do not add counter-weights to enable forklifts to lift heavier weights than it is designed for.

INSTALLATION INSTRUCTIONS

1. Insert forks through fork pockets of the boom so that the backside of the forklift boom is in contact with the fork carriage of the fork truck.
2. Lock boom firmly onto fork blades by tightening the two bolts located on the back of each fork pocket.
3. Insert restraint pins behind fork uprights to stop the forklift boom from moving forward.
4. Make desired adjustments to boom length by sliding the inner extension tube in or out of main tube, and locking it with locking pin.

BEFORE OPERATION

1. Ensure that forks of forklift are completely through boom fork pockets and that the boom is against the fork upright, near the carriage of the forklift.
2. Secure the forklift boom to forklift truck by locking the boom firmly onto fork blades by tightening the two bolts located at the back of each fork pocket. Utilize the restraint pins, which double as spanners for this operation.
3. Insert restraints pins behind fork uprights to stop the boom from moving forward.
4. Adjust the dimensions of the stone bundle and the hook positions so that it fits together and they are balanced.



BEFORE OPERATION

5. Extend the telescopic tube to the desired distance and secure with locking pin. Ensure the pin is locking the telescopic tube in place and it cannot move horizontally.
6. Review boom capacity to ensure the boom can lift the desired load at the desired distance safely.
7. Review forklift owner's manual for forklift capacity at the load center of gravity distance and raised height to ensure the forklift can lift the desired load safely.
8. Do not use the boom if it has damaged.
9. Tilt mast back toward the driver.

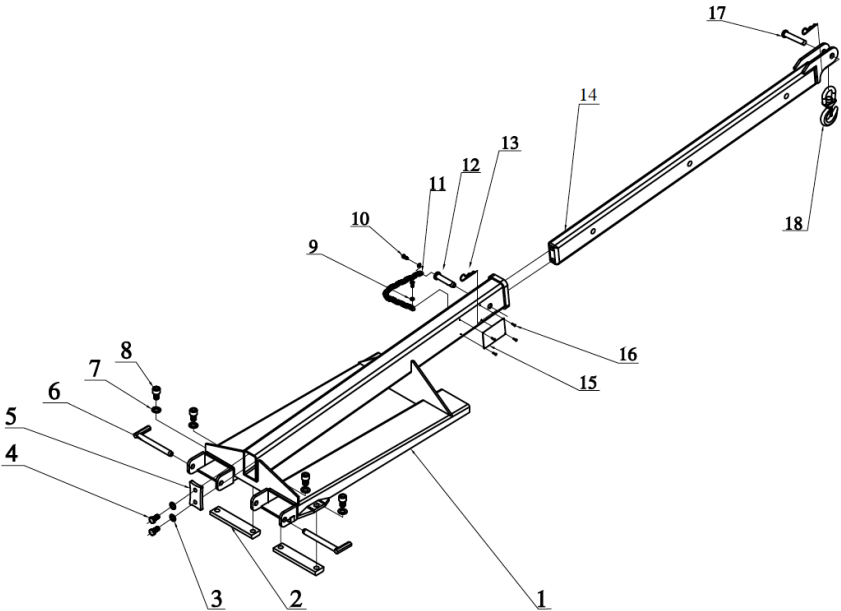
NOTE: Safe working load will vary according to lift truck capacity.
Never overload the forklift!

INSTRUCTIONS FOR USE

1. Wrap lifting chain, nylon strap, around the load you desire to move. Secure the stone bundle to boom utilizing one or both front and rear hooks of the hook bar.
NOTE: Do not place the chain, nylon strap on the sharp edges to prevent it is damaged.
2. Lift the stone bundle slowly. If the forklift begins to rise, the stone bundle is too heavy for the forklift. Unattached the stone bundle and move the center of the stone bundle closer to the forklift. It may require pushing the telescoping tube back into the larger pipe and locking it into position. Make sure all personnel are clear before attempting to lift the load. If the bundle does not raise evenly, re-center the lifting chains so the load remains parallel with the surface.
3. Ensure all personnel is clear of the area.
4. When removing an object from a stack, as soon as it is clear of the stack lower it to traveling height (as low as possible).
5. Transport the load to the desired location. Move slowly, avoid sharp turns, or turns at high speed. Avoid all bumps and inclines/declines. Suddenly stops and starts should also be avoided.
6. Raise/Lower the load into the desired position. Lower the load slowly into place.
7. Un-attach load-lifting chains from the boom. Push telescoping boom back into larger tube and secure with locking pin.



AARDWOLF FORKLIFT BOOM FB1-2720
ASSEMBLY DIAGRAM



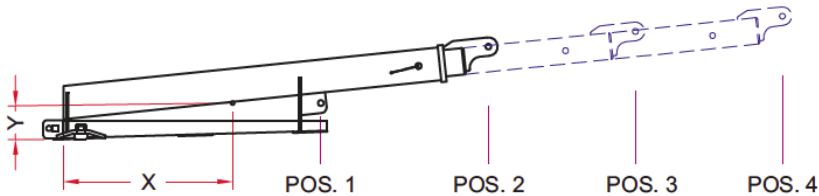
Please note: When assembling match number on upright with number on base.

CODE	POSITION	DESCRIPTION	QTY
FB1 - 001	1	Base	01
FB1 - 002	2	Adjust Bar	02
FB1 - 003	3	Washers Ø16	02
FB1 - 004	4	Hexagon Bolt M16 x 30	02
FB1 - 005	5	Flange	01
FB1 - 006	6	Hexagon Pin	02
FB1 - 007	7	Washers Ø20	04
FB1 - 008	8	Hexagon Socket Head Cap Screw M20	04
FB1 - 009	9	Washers Ø8	02
FB1 - 010	10	Hexagon Bolt M8	02
FB1 - 011	11	Chain Ø6 x 300	01
FB1 - 012	12	Pin 1	01
FB1 - 013	13	Cotter Pins	02
FB1 - 014	14	Slide Bar	01
FB1 - 015	15	Label	01
FB1 - 016	16	Pop Rivet	04
FB1 - 017	17	Pin 2	01
FB1 - 018	18	Swivel Hook 3.0T (SH30T)	01





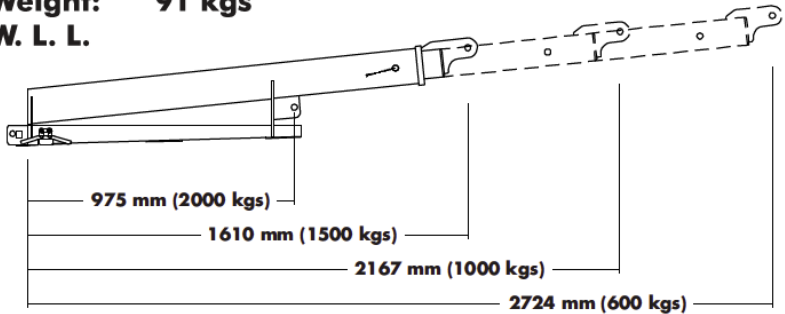
GRAVITY MOD. FB1 - 2720



Degree	Hook Positions	Capacity Kgs (lbs)	Center of Gravity	
			X mm (Inch)	Y mm (Inch)
6°	POS. 1	2000 (4400)	591 (1'11")	137 (5")
	POS. 2	1500 (3300)	591 (1'11")	137 (5")
	POS. 3	1000 (2200)	716 (2'4")	151 (6")
	POS. 4	600 (1320)	841 (2'9")	165 (7")



MOD. FB 1 - 2720
Serial No. 001630
Weight: 91 kgs
W. L. L.

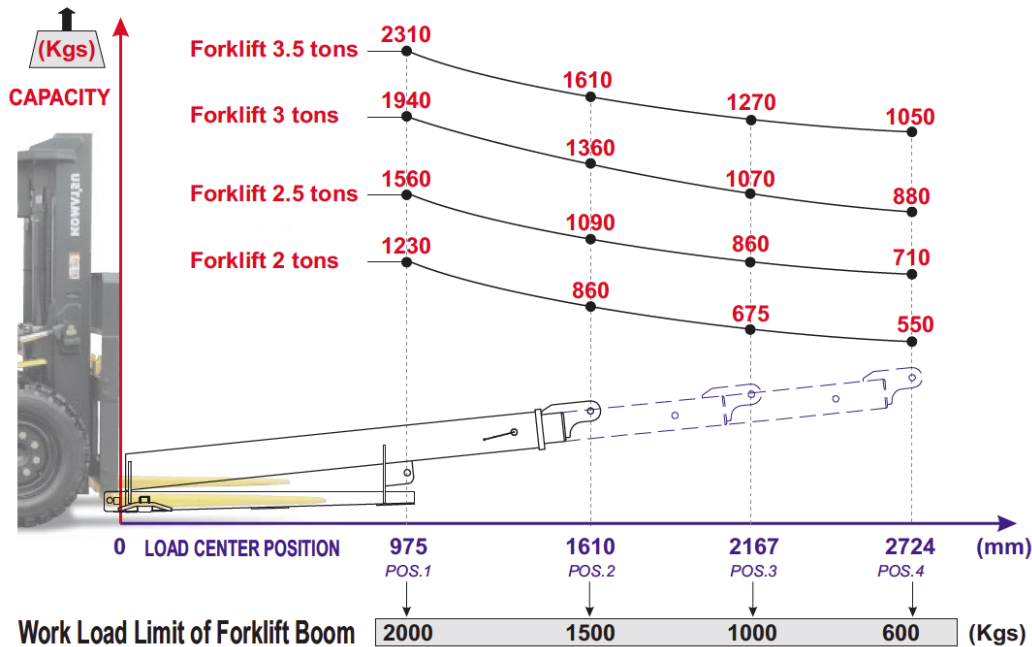


ACTUAL LOAD MAY BE RESTRICTED BY REFERENCE TO THE CAPACITY OF THE TRUCK.





LOAD CAPACITY CHART
FORKLIFT BOOM (FB1- 2720)



This certificate is your assurance that our Aardwolf Serial Fork Truck Booms and attachments are manufactured in accordance with our interpretations of applicable national OSHA (29CFR 1910.178) fork truck standards. Please realize that some portions of these standards are the responsibility of the end-user to fulfill, i.e., 29 CFR 1910.178 (a) (4). Modifications and additions with affect capacity and safe operation (of the fork truck) shall not be performed by the customer or user without the manufacturer's prior written approval. The capacity, operation, and maintenance instruction plates, tags or decals shall be changed accordingly.

CE-DECLARATION OF CONFORMITY

We declare that the product is in conformity with the following standard: The Machinery Directive 2006/42/EC.

NOTE: *It is the responsibility of the user to adapt to state or local laws. The end-user is responsible to use the equipment safely in a manner that it is designed for and within the rated capacity of the unit.*

WARRANTY

This product is warranted for one year from the date of purchase to be free of manufacturing defects in material and workmanship. This warranty does not cover normal wear of parts or damage resulting from any of the following: negligent use or misuse of the product, use or application contrary to installation instructions, or disassembly, repair or an iteration by any person before to authorization from a factory representative.



USA



AARDWOLF USA

- 📍 19201 S Reyes Avenue, Unit C7
Compton California, 90221
- ☎ (562) 553-6050
- ✉ leo@aardwolfusa.com
- 🌐 www.aardwolfusa.com

INDIA



AARDWOLF NORTH INDIA

- 📍 Harmara Road, Industrial area,
Madanganj, Kishangarh, Rajasthan n
India / Pin no. 305801
- ☎ Tel: +91 93584 48474
- ✉ sales@aardwolf.co.in
- 🌐 Web: www.aardwolf.co.in

AUSTRALIA



AARDWOLF AUSTRALIA

- 📍 1/5 Stanton Road,
Seven Hills NSW 2147
- ☎ +02 9838 8427
- ✉ enquiries@aardwolfaustralia.com
- 🌐 www.aardwolfaustralia.com

INDIA

AARDWOLF SOUTH INDIA

- 📍 # 9/27, Ground Floor, 5th Main Road,
Ganesha Block, Sultanpalya,
RT Nagar Post, Bengaluru-560 032
- ☎ Mob: +91 99017 24600
- ✉ bengaluru@aardwolf.co.in
- 🌐 www.aardwolf.co.in

GERMANY



STONE GLASS EQUIPMENT UG

- 📍 Am Gutstfch 11, 8451 Crimmitschau
Blankenhain, Germany.
- ☎ +49 366 0811 9236
- ✉ sales@aardwolf.com.de
- 🌐 www.aardwolf.com.de

INDIA

AARDWOLF CENTRAL INDIA

- ☎ Mob: 91 97659 06007
- ✉ mumbai@aardwolf.co.in
- 🌐 www.aardwolf.co.in

VIETNAM



AARDWOLF VIETNAM

- 📍 1B, An Phu, Thuan An,
Binh Duong, Vietnam.
- ☎ +84 274 371 2827438/39
- ✉ sales@aardwolf.com.au
- 🌐 www.aardwolf.com.au

