



# AEVLP 8 - 2000

**OWNER'S MANUAL**

**AARDWOLF ELECTRIC VACUUM LIFTER**

Get The Aardwolf AAdvantage





<b>1. Introduction</b>	<b>01</b>
<b>2. Specifications &amp; Features</b>	<b>02</b>
2.1 Specifications	
2.2 Features	
<b>3. Parts Drawings &amp; Parts Lists</b>	<b>03 - 05</b>
3.1 Assembly	
3.2 Part Lists	
<b>4. Operating Instructions</b>	<b>06 - 08</b>
4.1 Before Operating the Lifter	
4.2 Instruction for Use	
<b>5. Replacing Pads</b>	
<b>6. Vacuum reserve tank</b>	<b>08</b>
<b>7. Inspections &amp; Maintenance</b>	<b>09</b>
<b>8. Warranty</b>	<b>10</b>

The Electric Vacuum Lifter 2000kg(AEVLP8 - 2000) driven by electric pump motor is suitable to handle large metal sheets.

Featuring ability to adjust sub beam and vacuum pads for variety of sheet sizes.

With the ideal length and a sturdy structure, the AELVP8 - 2000 is the perfect solution when working at large construction sites.



2.1 SPECIFICATIONS:

Section \ Unit	Metric (mm-kg)	Imperial (inch-lbs)
Number of Pads	8	
Length-width of steel sheet	6000 x 1800	236 x 59
Pad Diameter	350	13.8
Work Load Limit	2000	4490
Net Weight	355	783

Battery information	<ul style="list-style-type: none"><li>- Power supply: 3.7V Lipo battery</li><li>- Battery capacity: 2000mAh x 1</li><li>- Adapter: DC 5V-1A</li><li>- Standby time: 5000h</li><li>- Charging cycle: 1000 times</li><li>- Charging time: 2h</li><li>- Non-stop working time: 7h</li><li>- 6-month warranty</li></ul>	Motor information	<ul style="list-style-type: none"><li>- Input supply: AC 220V-1Phase 50/60Hz</li><li>- Vacuum flow rate: 4.1/4.7m3/h</li></ul>
---------------------	---	-------------------	--

2.2 FEATURES:

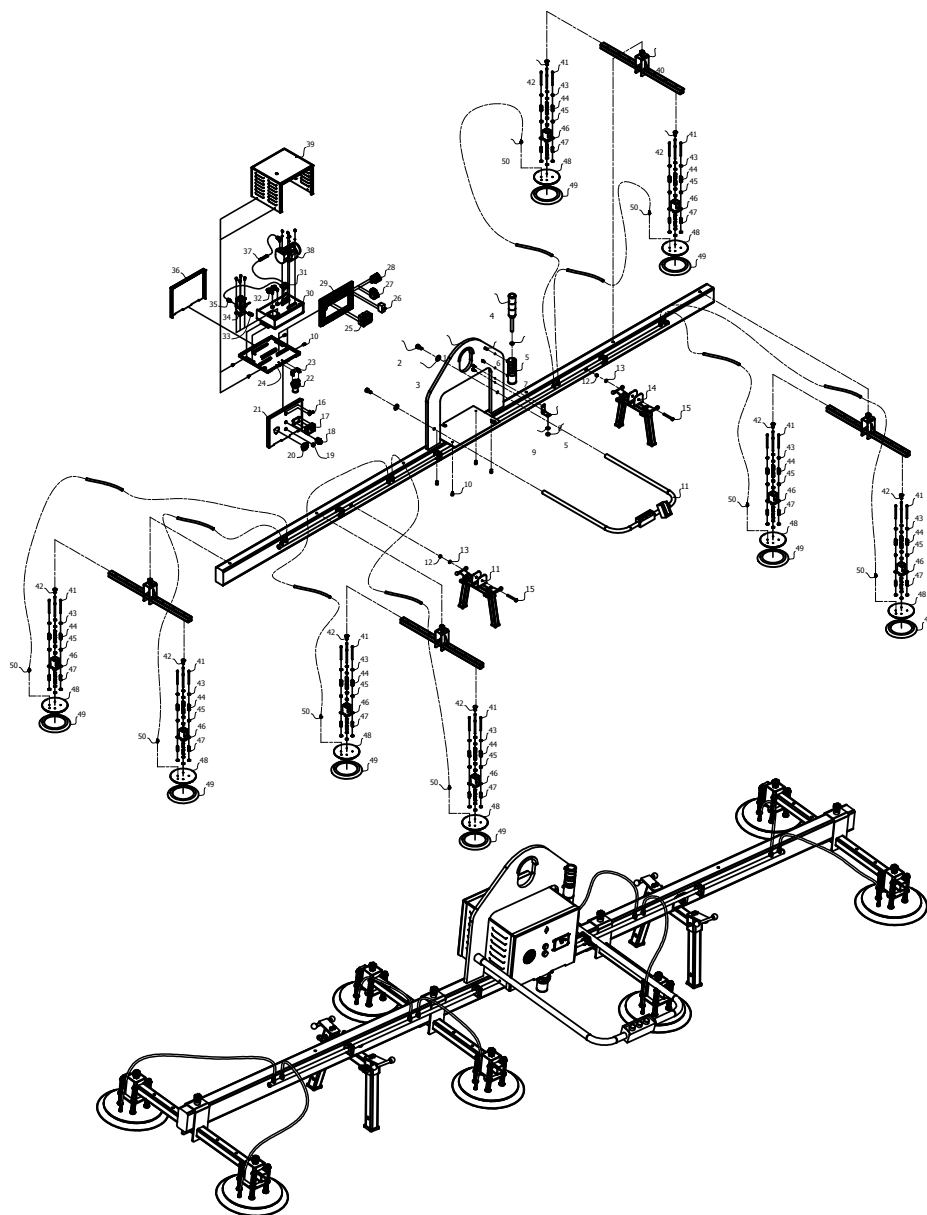
- Handles large metal sheets.
- Equipped with an electric cabinet-operated vacuum pump
- ON/OFF button.
- Audio/visual alarm system.
- Vacuum reserve tank for continuous process in the event of \ power outage.
- Pressure switch control system automatically starts the vacuum pump after start of loss pressure.
- Replacement vacuum pads and adjust the sub beam.
- Extremely safe and reliable.



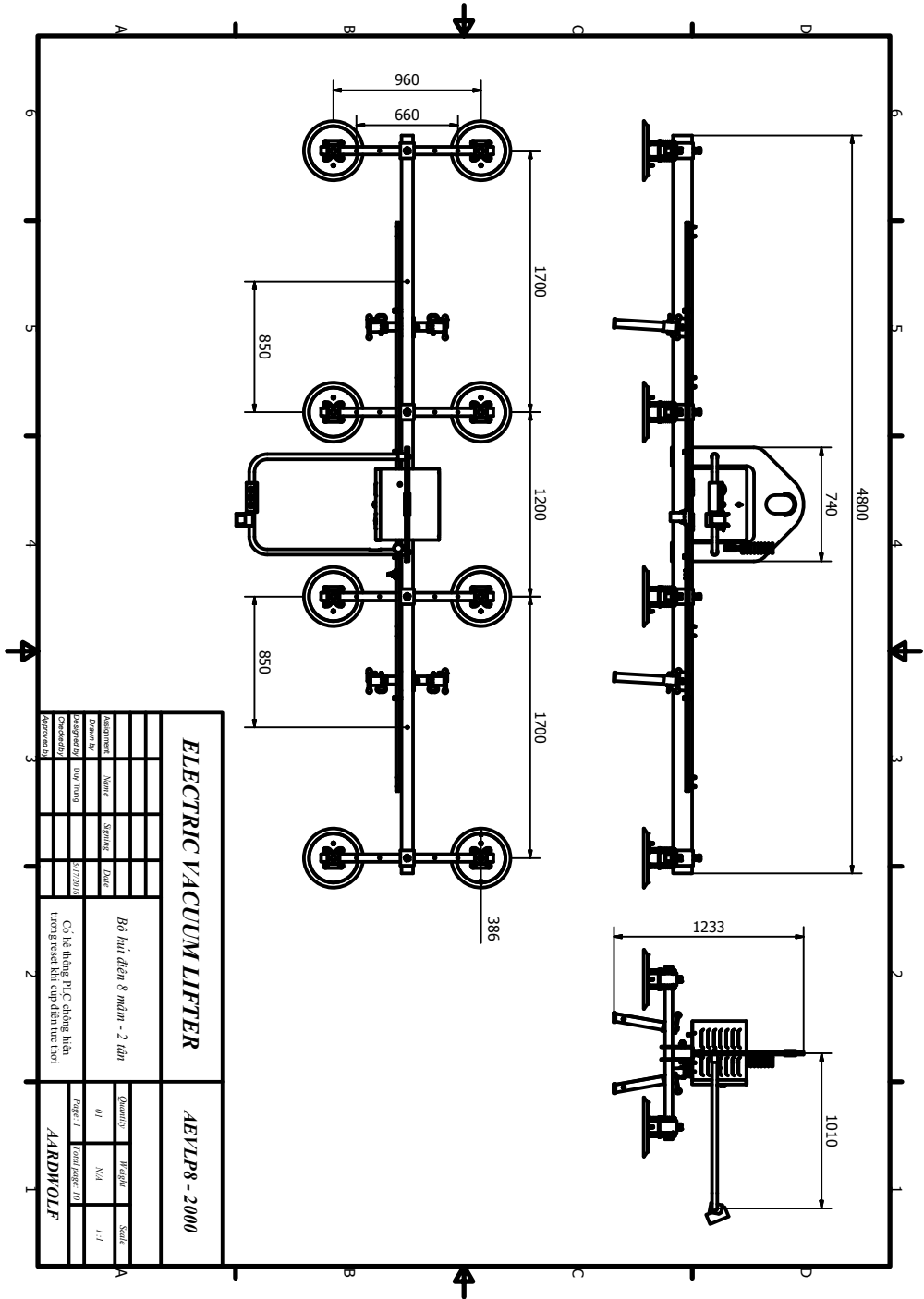


## 3.1 PARTS DRAWINGS

ASSEMBLY DIAGRAM  
ELECTRIC VACUUM LIFTER  
(Code: AEVLP8 - 2000)









## 3.2 PARTS LISTS

PARTS LIST			
No.	Code	Part Number	Qty.
26	AEVLP8-026	CB - 22A	01
27	AEVLP8-027	Contactor	01
28	AEVLP8-028	Relay	01
29	AEVLP8-029	Electric Board	01
30	AEVLP8-030	Vacuum Tank	01
31	AEVLP8-031	Elbow Connection $\frac{1}{8}$ - $\phi 12$	03
32	AEVLP8-032	Pressure Sensor	02
33	AEVLP8-033	Connection 1/2- $\phi 27$ + $\frac{1}{4}$ - $\phi 6$	01
34	AEVLP8-034	Solenoid	01
35	AEVLP8-035	Elbow connection $\frac{1}{2}$ - $\phi 12$	01
36	AEVLP8-036	Back Box	01
37	AEVLP8-037	One Way Valve	01
38	AEVLP8-038	Motor VRT - 408 - 1	01
39	AEVLP8-039	Top Box	01
40	AEVLP8-040	Beam 50 x 50 x 5	04
41	AEVLP8-041	Bolt M12 x 185	32
42	AEVLP8-042	Latch locking M20	12
43	AEVLP8-043	Bushing $\phi 30$	64
44	AEVLP8-044	Spring $\phi 4$ x 80	32
45	AEVLP8-045	Bushing $\phi 30$ - 1	32
46	AEVLP8-046	Bracket suction pad	08
47	AEVLP8-047	Spring $\phi 2.5$ x 70	32
48	AEVLP8-048	Hub 350	08
49	AEVLP8-049	Seal 350	08
50	AEVLP8-050	Tailpiece male 3/8	08

No.	Code	Part Number	Qty.
01	AEVLP8-001	Main Frame	01
02	AEVLP8-002	Bolt M10 x 30	02
03	AEVLP8-003	Washer M10	02
04	AEVLP8-004	Alarm light	01
05	AEVLP8-005	Nut M18	02
06	AEVLP8-006	Bolt M8	04
07	AEVLP8-007	Light holder	01
08	AEVLP8-008	Light pad	01
09	AEVLP8-009	Washer M18	01
10	AEVLP8-010	Bolt M6	12
11	AEVLP8-011	Handle	01
12	AEVLP8-012	Nut M20	02
13	AEVLP8-013	Washer M20	02
14	AEVLP8-014	Parking	02
15	AEVLP8-015	Bolt M20	02
16	AEVLP8-016	Locking Handle	01
17	AEVLP8-017	Alarm Box	01
18	AEVLP8-018	Power Switch	01
19	AEVLP8-019	Power Light	01
20	AEVLP8-020	Vacuum Gauge	01
21	AEVLP8-021	Front Box	01
22	AEVLP8-022	Filter	01
23	AEVLP8-023	Filter pad	01
24	AEVLP8-024	Bottom Box	01
25	AEVLP8-025	PLC - Mitsubishi	01





*To ensure safety during operation, the operator must carefully read these instructions to avoid injury, death or damage while using the AEVLP8 -2000.*

#### 4.1 BEFORE OPERATING THE LIFTER

##### **Attaching the lifter to hoisting equipment:**

- Determine whether the capacity of a crane or hoist is suitable for use with the AEVLP8 -2000.
- Determine the capacity of hoisting equipment (crane and hoist, when applicable) that is suitable for the maximum load weight plus lifter weight.
- Determine the sling that is suitable for the maximum load weight plus lifter weight.
- Connect the electrical connectors uniting the battery to the battery charge and the vacuum generating system. Now the lifter is operational.
- Perform a load test for the lifter before handling the load.

##### **Connecting to power supply:**

- The lifter is powered by a 220V single phase motor
- It is equipped with an international electric outlet as shown below
- Disconnect the power source when not in use.



##### **Safety instructions:**

- Carefully read the device manual before operating.
- Only competent and authorised personnel should operate the lifter.
- Follow the safety regulations stipulated by local authorities.
- Ensure that the manual is available during operation.
- Always wear appropriate protective equipment.
- Always check electric cabinet and motors before lifting the load.



- Avoid operating the device in the rain.
- Make sure that the vacuum pad surface is clean and free from dirt and oil.
- Perform the load test, vacuum test and pumping test, alarm light test to ensure that the lifter is safe before using.
- The load must not exceed the maximum allowable weight specified.
- The load must be a single sheet with a smooth and non-porous surface.
- Always put the vacuum pad correctly on the load.
- The lifter is not allowed to lift and must stay clear of a suspended load if the vacuum level is lower than 40 Cm Hg (53 kPa) and the red light is turned on.
- To avoid injury, no one is allowed to stand right under the load.
- In order to avoid damaging the vacuum pad, the load temperature must not exceed the 40 degrees.
- Do not carry out any lifting operations if any issues are found.
- Never lift a load when the vacuum indicator shows inadequate vacuum.
- Never operate a lifter that is damaged, malfunctioning or missing parts.
- Never operate a lifter if the edges of the vacuum pad are cut or damaged.
- Never operate a lifter if the tables for load capacity or any other warnings are missing, obscure or unclear.
- Never touch the vacuum release controls during the lifting process. This may result in loss of vacuum and unexpected release of the load.
- Never lift a load over people.
- Never use the lifter in dangerous environments.

**Note:** *Aardwolf Industries LLC denies any claims due to failure of unexpected load release or human and/or material losses in event of employing non-original pads.*

## 4.2 INSTRUCTIONS FOR USE

Before use and during the working process, the operator must adhere to the instructions below:

- All inspections and tests must be carried out before lifting.
- Make sure that there are no obstructions during the working process.
- Connect the AEVLP8 - 2000 to a crane or other hoisting equipment to start.
- Plug the male jack into the power source.
- Lift the lifter and then pull up the parkings .



- Put the vacuum pads of the AEVLP8 -2000 on the steel materials and press the power source button on the electric cabinet.
- Press the alarm box power source on the electric cabinet to signal the vacuum level.
- Press the green button on the control handle. When the pressure is 40 Cm Hg (53 kPa), the alarm box will not ring.
- After that, move and lift the steel material to the desired location.
- Set it down and press the two red buttons simultaneously to release the steel material.
- Lower the parkings to protect the vacuum pads.
- Turn off the power source when the lifter is not use.

**CE** – Declaration of conformity: we declare that the lifter is in conformity with the following standard: The Machinery Directive 2006/42/EC.

**Note:** *It is the responsibility of the user to adapt to state or local laws. The end user is responsible for using the equipment safely in the manner that it is designed for and within the rated capacity of the unit.*

## 5. REPLACING THE PADS

To install a pad into the lifter, please comply with the following steps:

- Step 1: Lift the suction pad knob.
- Step 2: Lightly move the pad out of the beam.
- Step 3: Replace it with a new pad carefully.

## 6. VACUUM RESERVE TANK

This device is equipped with a vacuum reserve tank for a secure lift in case of power break. This vacuum reserve tank is made stainless steel to ensure a durable lifetime.





## 7.1 INSPECTIONS

Check the AEVLP8 -2000 regularly to make sure it does not exhibit the following faults:

- Check that the electric cabinet is disconnected before servicing the lifter.
- Check the vacuum pads and load surfaces for contamination or debris.
- Check the lifter's structure and vacuum system for visual damage.
- Check the air filter to ensure it is clean.
- Check for unusual vibrations or noise while operating the device.
- Check the entire device for cracks, cuts, corrosion or any deficiency
- Check that the device has no missing parts.
- Check that the edges of the device are not cut or damaged while sealing.
- Repair all faults before using the device.

## 7.2 MAINTENANCE

Using the right equipment is as important as using the right maintenance solutions and the best techniques. These guidelines are intended to provide basic maintenance for the lifter. This could increase the lifespan of the equipment..

- Check the vacuum pads to ensure that they are free from dirt and that the edges of the rubber pads are not cut or damaged.
- The operator must clean the air filter to eliminate dust or contamination.
- If the lifter is used for less than one day in a two-week period, the operator should perform an inspection and maintenance to ensure that the lifter is safe and does not have any faults.
- The lifter may experience normal wear and tear and ageing. The operator should replace any reduced quality parts with new original parts.
- Keep the lifter in storage and dry conditions to avoid damage.





- 8.1 After receiving the product, the buyer should check, based on the spare parts list and spare drawings attached to the product, that the spare parts have not been damaged or lost during shipment. Any damages or losses must be officially reported to The Aardwolf Industries LLC within eight days from the date of purchase.
- 8.2 This lifter is granted a 12-month warranty based on The Aardwolf Industries LLC's warranty policy from the date of purchase.
- 8.3 The warranty coverage is not applicable:
- Whenever the clamp is handled incorrectly during manoeuvring.
  - Whenever the operator fails to comply with the instructions in this booklet.
  - Whenever the clamp's maximum permissible capacity is exceeded.
  - Whenever the specifications for steel thickness are not followed
  - Whenever damages are due to inadequate maintenance and inspections.
  - Whenever damage is due to improper storage.
  - Whenever repairs were performed by the user without our permission.
  - Whenever unofficial spare parts were used.

#### 8.4 **DISCLAIMER**

The Aardwolf Industries LLC's warranty does not cover the incorrect assembly and misuse of the lifter, the lack of maintenance and repair of the lifter as scheduled by the manufacturer, the operation carried out by non-competent or non-authorised operators or unofficial spare parts being.





### VIETNAM

#### AARDWOLF VIETNAM

- ◊ 1B, An Phu, Thuan An, Binh Duong, Vietnam.
- ☎ +84 650 371 2840
- ✉ sales@aardwolf.com.au
- 🌐 www.aardwolf.com.au

### KOREA

#### AARDWOLF KOREA

- ◊ 1F Keum-O Bldg, 8, Bonguiae-Ro, 19-Gil, Jungnang-Gu, Seoul, Korea.
- ☎ +82 6487 3949
- ✉ sales@aardwolf.kr
- 🌐 www.aardwolf.kr

### AUSTRALIA

#### AARDWOLF AUSTRALIA

- ◊ 2/106 Magowar Rd, Gिरraween NSW 2145, Australia.
- ☎ +0422 916 907
- ✉ enquires@aardwolfaustralia.com
- 🌐 www.aardwolfaustralia.com

### GERMANY

#### STONE GLASS EQUIPMENT UG

- ◊ Am Gutsteich 11, 08451 Crammischau/Blankenhain, Germany.
- ☎ +49 366 0811 9236
- ✉ sales@aardwolf.com.de
- 🌐 www.aardwolf.com.de

### INDIA

#### AARDWOLF KISHANGARH

- ◊ Harmara Road, Industrial Area, Madanganj, Kishangarh, Rajasthan India / Pin no. 305801
- ☎ Tel: +91 9785016771
- ✉ Email: sales@aardwolf.co.in
- 🌐 Web: www.aardwolf.co.in

#### AARDWOLF BENGALURU

- ◊ No: 6, Sharma Complex, 3rd Cross, Ganesha Block, Dinnur Main Road, R. T. Nagar P.O Bengaluru-560032
- ☎ +91 98451 62959/ 91 9901724600
- ✉ bengaluru@aardwolf.co.in
- 🌐 www.aardwolf.co.in

