

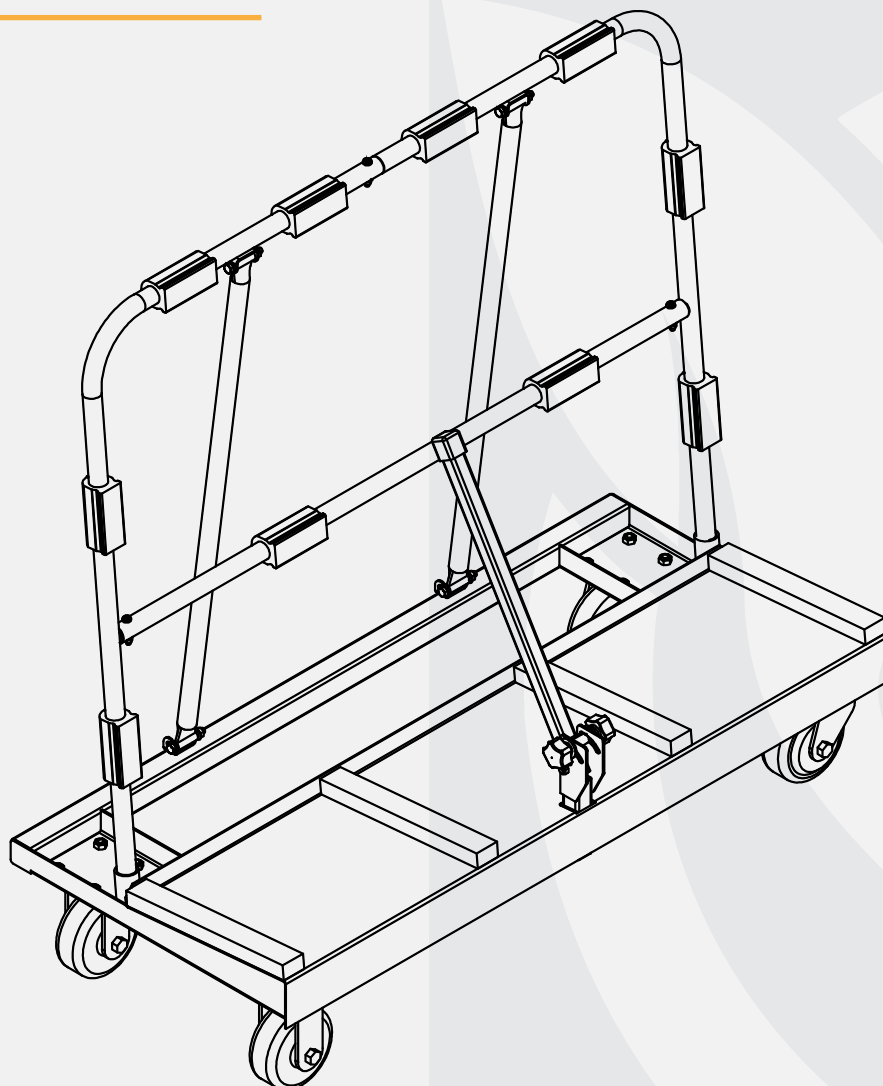


OWNER'S MANUAL

AARDWOLF

DRYWALL TROLLEY PRO

DWT-1180P



The Aardwolf Drywall Trolley Pro is ideal for transporting a vast range of boards, from doors, fences, drywall & large sheet panels within the factories and on building sites. Heavy-duty casters allow easy manoeuvring of fully-loaded carts in the workshop and on the construction site.

WELCOME

Welcome onboard!

Thank you so much for your selection of the Aardwolf Drywall Trolley Pro! You and your new Aardwolf Drywall Trolley Pro is now companions. Please read this manual to understand your companion.

This Manual of the Aardwolf Drywall Trolley Pro is designed to provide the important information regarding the purposes, uses and maintenances of all Drywall Trolleys. It is compulsory for the operator to carefully read over the manual before operating the trolley and keep it available for reference at any time in the workplace.

In the manual, you will find general safety operations, drawing list, parts list, instructions for use, features, specification, dimensions, inspections, maintenance and repair, warranty.

Aardwolf Industries LLC

GENERAL SAFETY OPERATIONS

The user's manual for the Drywall Trolley Pro must always be available at the operation site. The instructions mentioned in this manual must be strictly adhered to. Furthermore, supplementary to the instruction manual, the statutory regulations governing general accident prevention and environmental protection are to be enforced.

Operating and maintenance personnel must have read and understood the user's manual, in particular the safety instructions, before starting work. Protective equipment must be made available for operating and maintenance personnel and worn at all times. The user or his representative is responsible for supervising operating personnel and ensuring they are aware of the hazards and safety implications of working with the Drywall Trolley Pro.

Please following the general safety operations before using the Aardwolf product:

Before operation:

- Carefully read this user manual before using the Drywall Trolley Pro.
- The load must not exceed the maximum allowable weight specified.
- Make sure that the Drywall Trolley Pro is placed on a flat and smooth surface. Confirm all the welded joints are free from any defects or damage, such as separation, crack, and so forth.
- Do not carry out any moving/storing or transporting operations if any issues are found.
- Make sure that all the bolts are securely tightened.
- Use appropriate safety equipment to protect against injury.
- Check the rubbers, timbers and wheels are in faultless conditions. If they have any damages or are defective, replace them with the original parts from Aardwolf.
- Lubricate the wheels frequency.
- Perform a load test for the trolley before transporting/moving/storing the material.

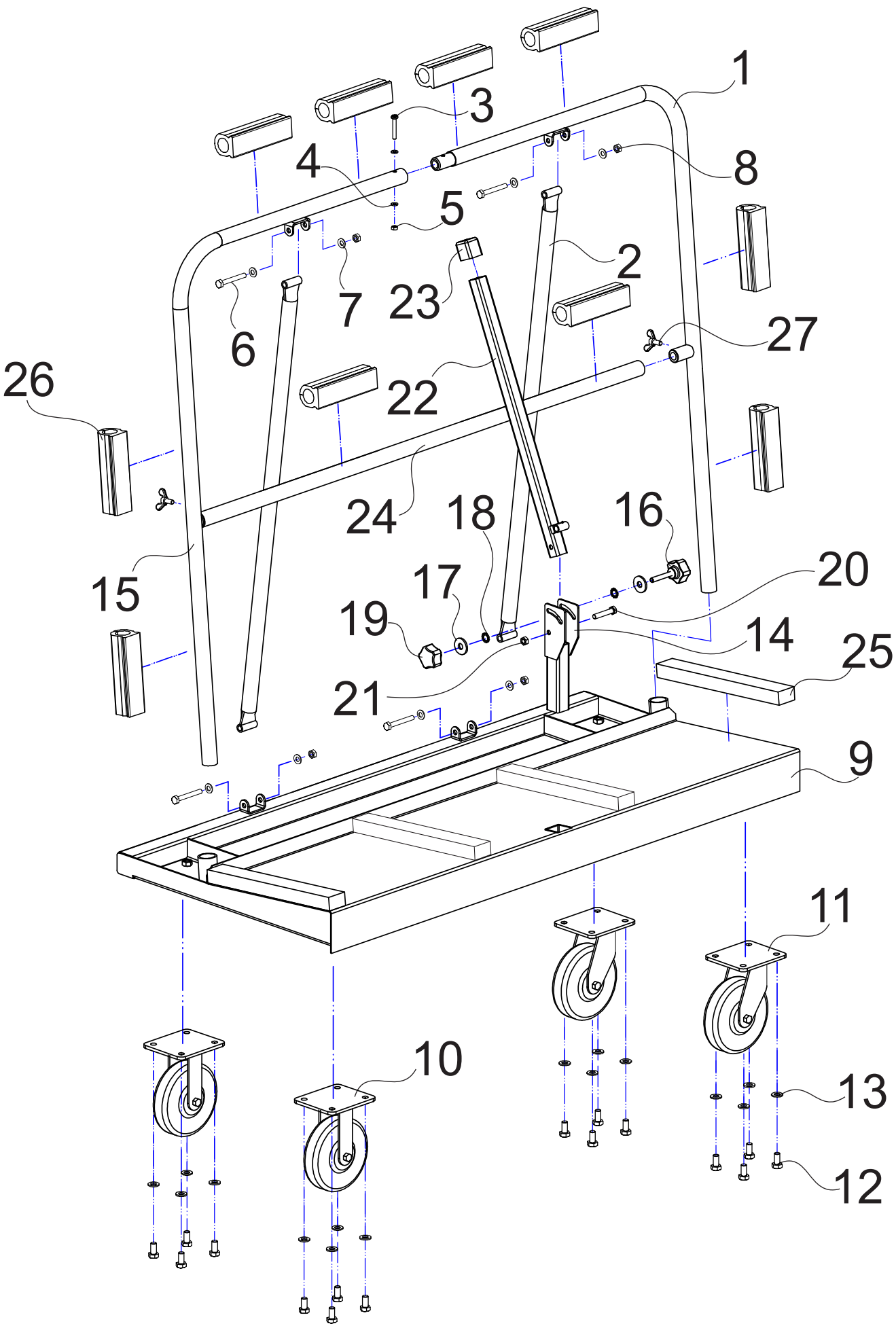
During operation:

- The materials should be restrained in a proper manner during transporting/storing.
- The materials should be placed balanced on the Drywall Trolley Pro.
- Make sure the weight of the materials being placed is within the specified working load limit.
- Follow the general safety operations in this operation manual.

After operation:

- Clean the Drywall Trolley Pro thoroughly after each use.
- Store in a well-ventilated place, avoid places with high heat or humidity.

DRAWING LIST



PARTS LIST

POS.	CODE	DESCRIPTION	Q'TY
1	DWT1180P-01	HANDLE (RIGHT)	1
2	DWT1180P-02	SUPPORTING BAR	2
3	DWT1180P-03	PAN HEAD SCREW M6x40	1
4	DWT1180P-04	FLAT WASHERS M6	2
5	DWT1180P-05	HEXAGON NUTS M6	1
6	DWT1180P-06	HEXAGON HEAD BOLTS M8x60	4
7	DWT1180P-07	FLAT WASHERS M8	8
8	DWT1180P-08	HEXAGON NUTS M8	4
9	DWT1180P-09	MAIN BASE	1
10	DWT1180P-10	FIXED CASTER (EH07-11-125R-207)	2
11	DWT1180P-11	SWIVEL CASTER (EH07-11-125S-207)	2
12	DWT1180P-12	HEXAGON HEAD BOLTS M10x20	16
13	DWT1180P-13	FLAT WASHERS M10	16
14	DWT1180P-14	HOLD BAR SUPPORT	1
15	DWT1180P-15	HANDLE (LEFT)	1
16	DWT1180P-16	TURN-KNOB WITH PIN M8	1
17	DWT1180P-17	BIG FLAT WASHERS M8	2
18	DWT1180P-18	SERRATED LOCK WASHER Ø10	2
19	DWT1180P-19	TURN-KNOB WITH HOLE M8	1
20	DWT1180P-20	HEXAGON HEAD BOLTS M8x45	1
21	DWT1180P-21	NYLON NUT M8	1
22	DWT1180P-22	SAFETY BAR	1
23	DWT1180P-23	COVER	1
24	DWT1180P-24	CROSS BAR	1
25	DWT1180P-25	TIMBER	4
26	DWT1180P-26	RUBBER	10
27	DWT1180P-27	WING SCREWS M6x14	2

INSTRUCTIONS FOR USE

- Move the Drywall Trolley Pro to the stone slab's position.
- User can use the Aardwolf products for moving the stone slabs to the Drywall Trolley Pro such as Aardwolf Slab Lifters (Standard or Automatic versions), Stone Panel Carriers, Carry Clamps for Sheet Material in the easy and safe.
- Place the stone slabs slowly to the Drywall Trolley Pro and make sure they are balanced.
- When finishing moving the stone slabs process to the Drywall Trolley Pro, the user has to use the safety bar to ensure the materials are kept tightly on the trolley to eliminate any risk of the slab tipping over.
- Move the loaded to the desired position.

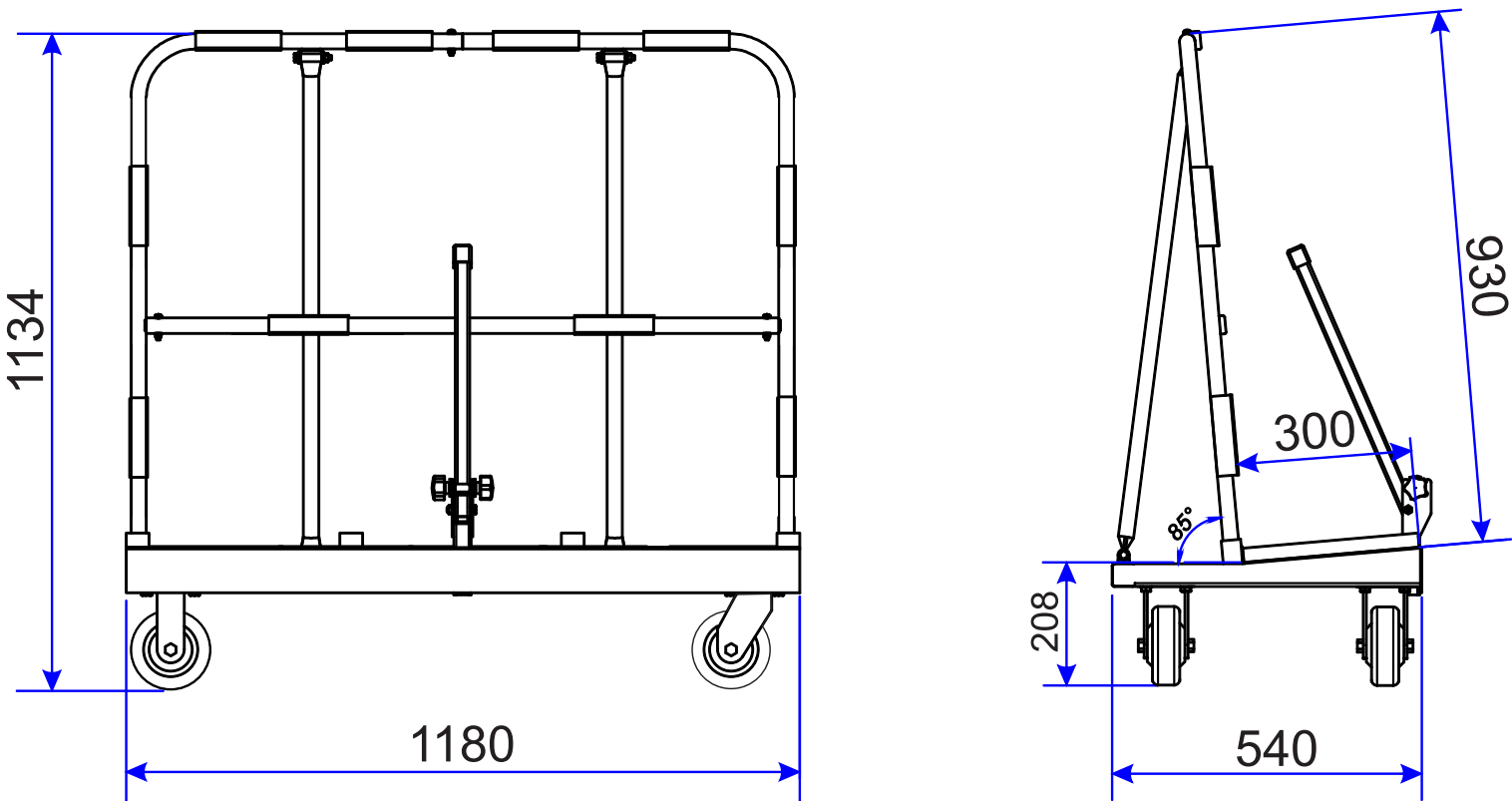
FEATURES

- It is equipped with a crossbar for transporting and storing small stone slabs.
- The load-bearing and the base surfaces are mounted rubber and timber to prevent stone slabs from breaking and scratch.
- Two fixed casters and two rotary casters for easy control.
- The smart arrangement of parts to increase stability.
- Durable electrostatic coating.
- Optional: Safety bar

SPECIFICATION

DWT-1180P	Metric	Imperial
Width of slab storage base area	300 mm	12 in
Working load limit	1000 kg	2204 lb
Net weight	39 kg	86 lb
Gross weight	35 kg	78 lb
Packaging dimensions	1200 x 560 x 180 mm	47 x 22 x 7 in

DIMENSIONS





INSPECTIONS, MAINTENANCE AND REPAIR

- Make a regular procedure for the trolley inspection and maintenance. The frequency of inspection will depend upon the amount of use of the trolley. The maintenance should be conducted in a written record, indicating inspection dates, the condition of the trolley on each of those dates, and any repairs made.
- Always keep necessary spare parts on hand and use only original spare parts when carrying out repairs or maintenance.
- Nuts and bolts need to be checked and tightened regular. Ensure that the welded joints are free from any defect or damage like separation, cracks, etc.
- Make sure that all of the rubbers and timbers are in a good situation during operating.
- Store the trolley in a cool and dry place.

WARRANTY

Warranty

At the time of delivery, it is necessary to check that the Drywall Trolley Pro has not been damaged during shipment. Any claims must be presented within eight days from the date of delivery. We grant one year warranty on the Drywall Trolley Pro from the date of purchase (Do not include the rubber layers and the timbers).

Warranty coverage is not applicable:

- The user failed to comply with the instructions in the manual.
- The specifications are not followed.
- Damages are due to inadequate maintenance and inspections.
- Damages are due to improper storage and/or usage.
- Repairs were performed by the user without our permission.
- Non-original spare parts were used.

WE OFFER

SIMPLE, REALIABLE, COST SAVING
AND **AWESOME IDEAS** FOR YOUR BUSINESS



SCAN ME TO SEE
PRODUCTS VIDEO



CONTACT US

sales@aardwolf.co.in | www.aardwolf.co.in

