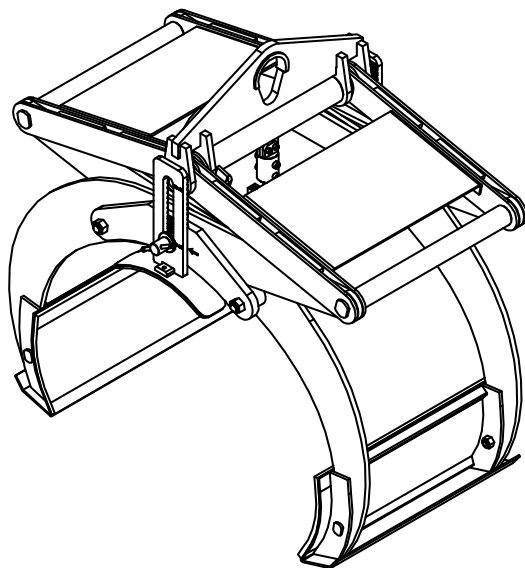




AARDWOLF CONCRETE PIPE LIFTER

OWNER'S MANUAL

PRODUCT CODE: ACPL750



CONTENTS

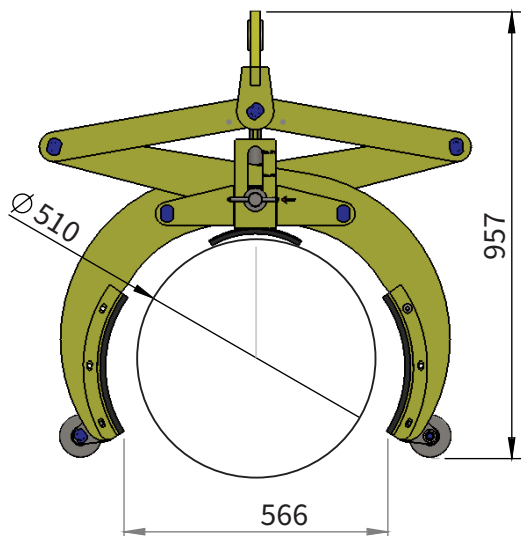
SPECIFICATIONS ► **FEATURES** ► **SAFETY INSTRUCTIONS** ► **WARRANTY**
SAFETY INSTRUCTIONS FOR HOISTING ACCESSORIES ► **PART DRAWING & PART LIST**
INSTRUCTIONS FOR USE ► **TOP PAD ADJUSTMENT** ► **INSPECTIONS, MAINTENANCE & REPAIR**

Fast, efficient, flexible, smart and fully automatic, the Aardwolf mechanical lifters are designed to safely lift concrete pipes. The lifter does not require additional hydraulics. The operator is able to use the pipe lifter to grab, lift and move pipes without assistance. The narrow profile allows for the easy installation of concrete pipes into tight trenches.



1. TECHNICAL SPECIFICATIONS

ACPL750	Metric (mm-kg)	Imperial (inch-lb)
Grip range	400 - 500	15" - 20"
Working load limit	750	1653
Net weight	150	331
Gross weight	162	357
Packaging dimension	950 x 830 x 980	37.4" x 32.7" x 38.6"



2. FEATURES

- Auto locks and unlocks a load
- Vulcanized rubber pads
- Durable powder-coated finish

3. SAFETY INSTRUCTIONS

The Aardwolf Concrete Pipe Lifter ACPL750 have innovational designs to reduce risks, which might occur during the lifting process. It is most important that operators adhere to the safety guidances listed below:

- Carefully read the user manual before operating.
- Only competent and authorized personnel should operate the lifter.
- Ensure that the user manual is available during operation.
- Perform the load test to ensure the lifter is safe before use.



3. SAFETY INSTRUCTIONS

- The load must not exceed the maximum allowable weight specified.
- Inspect the rubber pads to ensure they are free from dirt, grease and other substances.
- Always place the lifter correctly on the load for balancing.
- To avoid injury, people are not allowed to stand under the load.
- Make sure the pipe fits snugly into the ACPL750 before lifting.
- Move slowly to avoid shock loading.
- Do not move on the steep gradients when lifting concrete pipes.
- Do not carry out any lifting operations if any issues are found.
- Do not use the ACPL750 for other purposes that it is not designed for.
- Do not make modifications to the ACPL750.
- Never leave a lifted load unsupervised.
- Never operate an ACPL750 that is damaged, malfunctioning, or has missing parts.
- Never operate an ACPL750 if the clamping jaws are damaged.
- Never use the ACPL750 in dangerous environments.

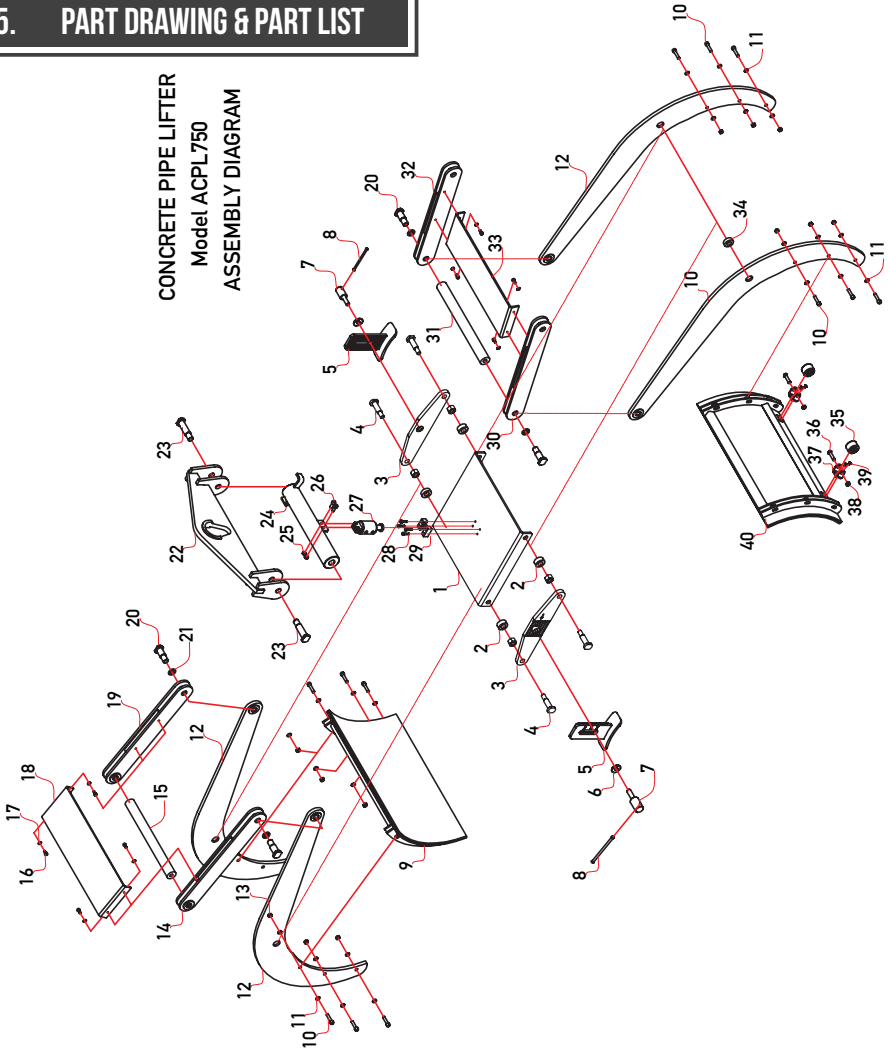
4. SAFETY INSTRUCTIONS FOR HOISTING ACCESSORIES

Important! In order to protect people from getting injured, it is important to follow some general safety directions while using hoisting accessories.

- Read the operation manual carefully before you use hoisting accessories.
- Make sure that the operation manual is always available at the place where the hoisting accessories are used.
- Give permission to work with hoisting accessories only to people who are suitably trained and competent.
- Wear safety equipment, like a helmet, gloves, and safety boots.
- Never leave a lifted load unsupervised.
- Lift a load only as much as is really necessary.
- Do not get underneath the load and do not permit others to do so.
- Connections or individual parts of hoisting accessories should never be able to loosen by themselves.
- Hoisting accessories must be stored in a place where they are protected against weather conditions and aggressive substances.
- Defect hoisting accessories are no longer to be used.
- Repairs and checks are to be made only by qualified people.

5. PART DRAWING & PART LIST

CONCRETE PIPE LIFTER Model ACPL750 ASSEMBLY DIAGRAM



PARTS LIST			
NO.	CODE	PART NUMBER	QTY.
1	ACPL-01	Link frame	01
2	ACPL-02	Bushing 40 x 16	02
3	ACPL-03	Link plate	02
4	ACPL-04	Pin Ø20 x 91	04
5	ACPL-05	Parking	02
6	ACPL-06	Washer Ø50 x 6	02
7	ACPL-07	Bolt bushing M16	02
8	ACPL-08	Pin Ø8 x 100	02
9	ACPL-09	Small brace channel	02
10	ACPL-10	Bolt M10 x 35	12
11	ACPL-11	Washer M10	12
12	ACPL-12	Brace Clamp	04
13	ACPL-13	Nut M10	04
14	ACPL-14	Clamp Bar - 01	01
15	ACPL-15	Axle Ø50 x 464	01
16	ACPL-16	Washer M8	08
17	ACPL-17	Bolt M8 x 20	18
18	ACPL-18	Small plate 464	01
19	ACPL-19	Clamp Bar - 02	01
20	ACPL-20	Pin Ø20 x 69	04
21	ACPL-21	Washer M30	04
22	ACPL-22	Hook	01
23	ACPL-23	Pin Ø20 x 103	01
24	ACPL-24	Main axle	01
25	ACPL-25	Nut M8	02
26	ACPL-26	Bolt M8 x 35	02
27	ACPL-27	Lock	01
28	ACPL-28	Bolt M8 x 30	04
29	ACPL-29	Lock stop	01
30	ACPL-30	Clamp Bar - 03	01
31	ACPL-31	Axle Ø50 x 496	01
32	ACPL-32	Clamp Bar - 04	01
33	ACPL-33	Big plate 496	01
34	ACPL-34	Bushing Ø50 x 16.5	02
35	ACPL-35	Wheel - Ø90 x 50	04
36	ACPL-36	Pin 17 x 68 - M14	04
37	ACPL-37	Pad wheel	04
38	ACPL-38	Nut M14	04
39	ACPL-39	Screw M10 x 14	08
40	ACPL-40	Big brace channel	01



6. INSTRUCTIONS FOR USE

The ACPL750 are designed to efficiently handle heavy concrete pipes. However the operator must follow the instructions below to avoid dangers while using it.

- Determine whether the capacity of a crane, excavator or hoist is suitable for use with the ACPL750.
- Determine the capacity of bow shackle that is used to attach the lifter with the crane, excavator or hoist to ensure that it is proper and safe.
- The operator should complete all inspections to ensure the lifter is securely fix to the lifting machine before any lifting takes place.
- Perform a load test for the lifter to ensure the ACPL750 is attached in accordance with the crane, excavator or hoist before lifting the load.

Step 1: Connect the ACPL750 to a crane, excavator or hoists to start.

Step 2: Lift the ACPL750 and place this lifter on the concrete pipe.

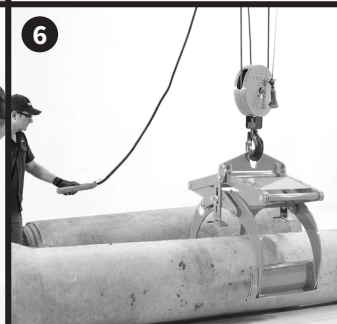
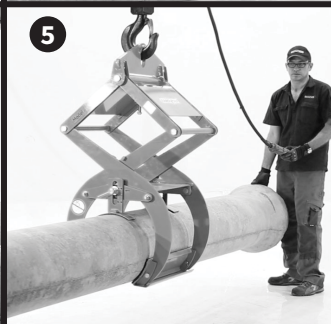
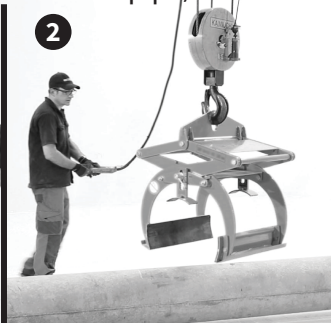
Step 3: Depending on the diameter of the concrete pipe, the operator must adjust the top pads to suit the diameter of the concrete pipe.

Step 4: Lower the ACPL750 down onto the concrete pipe. Make sure that ACPL750 is secure and fits well into the clamping jaws before lifting and moving.

Step 5: Slowly lift and move the concrete pipe to the desired location.

Step 6: Carefully lower the concrete pipe to its desired position. The auto lock will release the pipe from the ACPL750 so the ACPL750 can be moved to the next concrete pipe.

Note: Before lowering the concrete pipe, ensure that there are no obstructions.



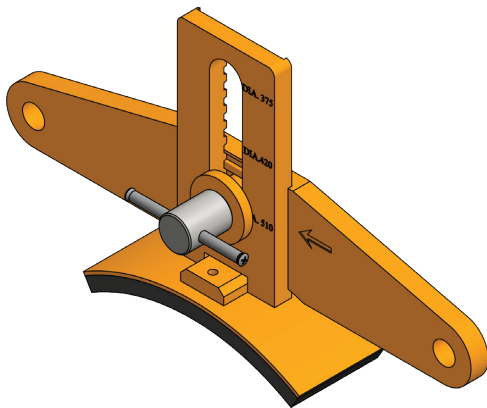
6. TOP PAD ADJUSTMENT

The top pad is designed to fit different diameter concrete pipes. It is adjusted simply and quickly. There are some step adjustments that you need to follow:

First: Loosen the bolt.

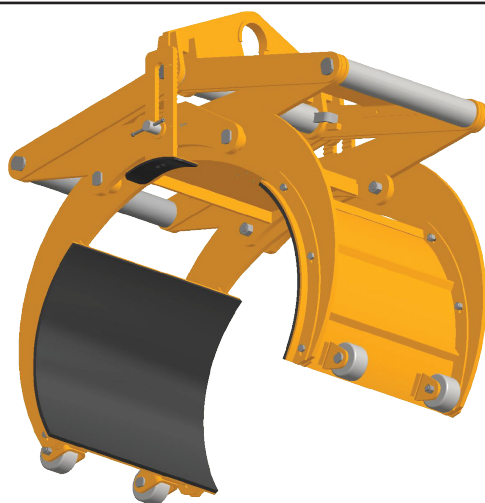


Second: Move the top pad to the required diameter position.



NOTE:
Pipe diameter of the
ACPL750: 400 – 500mm

Third: Screw the bolt back and make sure that it is tight before lifting.



Fourth: The operator needs to check all pads to ensure they are manoeuvred into the proper position.

8. INSPECTION, MAINTENANCE & REPAIR

There are two types of inspections - in-service and periodic.

In-service:

Visual inspection before each use. This implies that before each lift, the user has a good look over the Concrete Pipe Lifter to ensure that there is no significant damage or wear and that the working load limit tag or markings are fitted and limit legible. At this point, if any defects are noted, the Concrete Pipe Lifter should be withdrawn from service, and inspected by a competent person who can make a decision on whether to use, repair, or discard the Concrete Pipe Lifter.

Periodic:

The Concrete Pipe Lifters should be checked and tested every 12 months by as competent person who has been trained and who can make a decision on whether to use, repair or discard Concrete Pipe Lifter. These inspections also need to be adequately documented and are mandatory in many countries. Always use original spare parts when carrying out repairs or maintenance.

CE - DECLARATION OF CONFORMITY

We declare that the product is in conformity with the following standard: The Machinery Directive 2006/42/EC.

Note: It is the responsibility of the user to adapt to state or local laws. The end-user is responsible to use the equipment safely in a manner that it is designed for and within the rated capacity of the unit.

9. WARRANTY

At the time of delivery, it is necessary to check that the Concrete Pipe Lifter has not been damaged during shipment. Any claims must be presented within 8 days of the date of delivery of the product.

We grant you 12 months warranty on the Aardwolf Concrete Pipe Lifter countered from the day of purchase.

The warranty coverage is not applicable:

- The lifter is handled incorrectly during maneuvering.
- The operator fails to comply with the instructions in this booklet.
- The lifter's maximum permissible capacity is exceeded.
- The specifications for pipe size are not followed.
- Damages are due to inadequate maintenance and inspections.
- Damage is due to improper storage.
- Repairs were performed by the user without our permission.
- Non-original spare parts were used.



USA



AARDWOLF USA

- 📍 19201 S Reyes Avenue, Unit C7
Compton California, 90221
- ☎ (562) 553-6050
- ✉ leo@aardwolfusa.com
- 🌐 www.aardwolfusa.com

INDIA



AARDWOLF NORTH INDIA

- 📍 Harmara Road, Industrial area,
Madanganj, Kishangarh, Rajasthan n
India / Pin no. 305801
- ☎ Tel: +91 93584 48474
- ✉ sales@aardwolf.co.in
- 🌐 Web: www.aardwolf.co.in

AUSTRALIA



AARDWOLF AUSTRALIA

- 📍 1/5 Stanton Road,
Seven Hills NSW 2147
- ☎ +02 9838 8427
- ✉ enquiries@aardwolfaustralia.com
- 🌐 www.aardwolfaustralia.com

INDIA

AARDWOLF SOUTH INDIA

- 📍 # 9/27, Ground Floor, 5th Main Road,
Ganesha Block, Sultanpalya,
RT Nagar Post, Bengaluru-560 032
- ☎ Mob: +91 99017 24600
- ✉ bengaluru@aardwolf.co.in
- 🌐 www.aardwolf.co.in

GERMANY



STONE GLASS EQUIPMENT UG

- 📍 Am Gutstfch 11, 8451 Crimmitschau
Blankenhain, Germany.
- ☎ +49 366 0811 9236
- ✉ sales@aardwolf.com.de
- 🌐 www.aardwolf.com.de

INDIA

AARDWOLF CENTRAL INDIA

- ☎ Mob: 91 97659 06007
- ✉ mumbai@aardwolf.co.in
- 🌐 www.aardwolf.co.in

VIETNAM



AARDWOLF VIETNAM

- 📍 1B, An Phu, Thuan An,
Binh Duong, Vietnam.
- ☎ +84 274 371 2827438/39
- ✉ sales@aardwolf.com.au
- 🌐 www.aardwolf.com.au

