

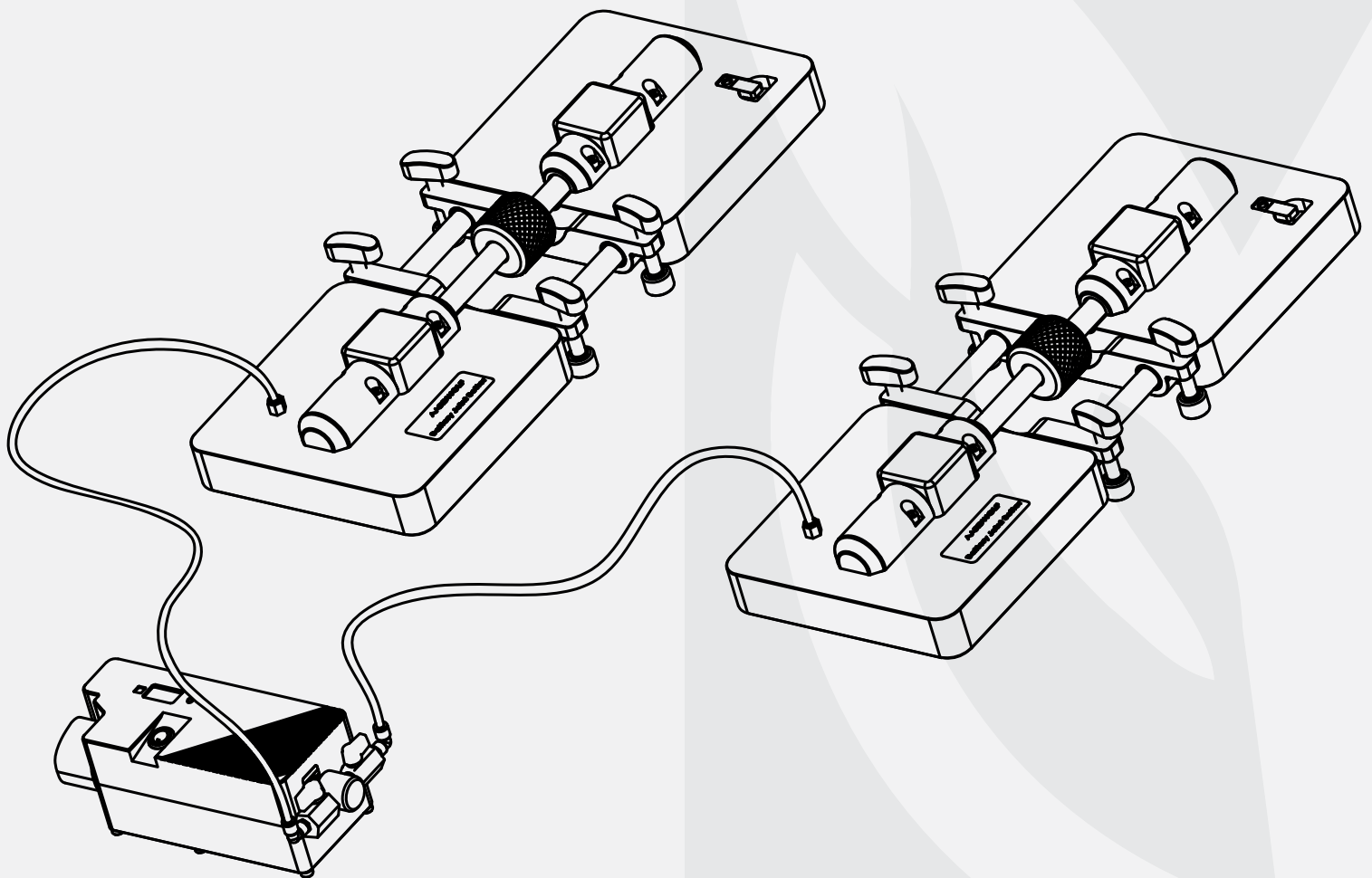


**OWNER'S MANUAL**

# **AARDWOLF**

## **BATTERY JOINT SETTER**

### **BOSS**



# **WELCOME**

---

## ***Welcome onboard!***

Thank you so much for your selection of The Battery Joint Setter !

You and your new Battery Joint Setter is now companions.

Please read this manual to understand your companion.

This Manual of the Battery Joint Setter is designed to provide the important information regarding the purposes, uses and maintenances of the Battery Joint Setter. It is compulsory for the operator to carefully read over the manual before operating the Battery Joint Setter and keep it available for reference at any time in the workplace.

In the manual, you will find general safety operations, drawing list, parts list, instructions for use, features, specification, dimensions, inspections, maintenance and repair, warranty.

**Aardwolf Industries LLC**

The Battery Joint Setter is designed to close gaps between two pieces of slabs and pull them together. This device works well on stone and glass with non-porous surfaces. It can be quickly closed or opened by simply moving the roller nut with the palm of your hand. The two vacuum bases are aligned with precision steel guide axles. These axles are anchored on each side with a main axle and two sub axles. When the roller rotates, one vacuum base will move along two sub axles and pull two pieces of slabs together. One balance bar with four leveling knobs allows surfaces to be leveled precisely. With the battery-operated vacuum pump, an equal vacuum is maintained in both pads during the working process.

## **GENERAL SAFETY OPERATIONS**

The user's manual for the Battery Joint Setter (BOSS) must always be available at the operation site. The instructions mentioned in this manual must be strictly adhered to. Furthermore, supplementary to the instruction manual, the statutory regulations governing general accident prevention and environmental protection are to be enforced.

Operating and maintenance personnel must have read and understood the operator's manual, in particular the safety instructions, before starting work. Protective equipment must be made available for operating and maintenance personnel and worn at all times. The user or his representative is responsible for supervising operating personnel and ensuring they are aware of the hazards and safety implications of working with the Battery Joint Setter.

Please following the general safety operations before using the Aardwolf product:

- Carefully read this user manual before using the Battery Joint Setter.
- Do not carry out any working operations if any issues are found.
- Make sure that all the bolts are securely tightened.
- Check the battery vacuum pump that is used to supply the vacuum for the joint setter and make sure that it is good status before use.
- Check the leveling knobs, bolts, vacuum bases, seals and valves are in faultless conditions. If they have any damages or are defective, replace them with the original parts from Aardwolf.
- Perform a test for the joint setter before working with the material.
- The materials should be placed balanced on the Battery Joint Setter.
- Follow the general safety operations in this operation manual.
- Clean the Battery Joint Setter thoroughly after each use.
- Store in a well-ventilated place, avoid places with high heat or humidity.

# INSTRUCTIONS FOR USE

---

- Open the protective carrying case to take the joint setter out of.
- Place the Battery Joint Setter onto the materials to be jointed.
- Connect the air hoses to the battery vacuum pump and the joint setters by attaching the air hoses into the ball valves and holes of the quick connectors.

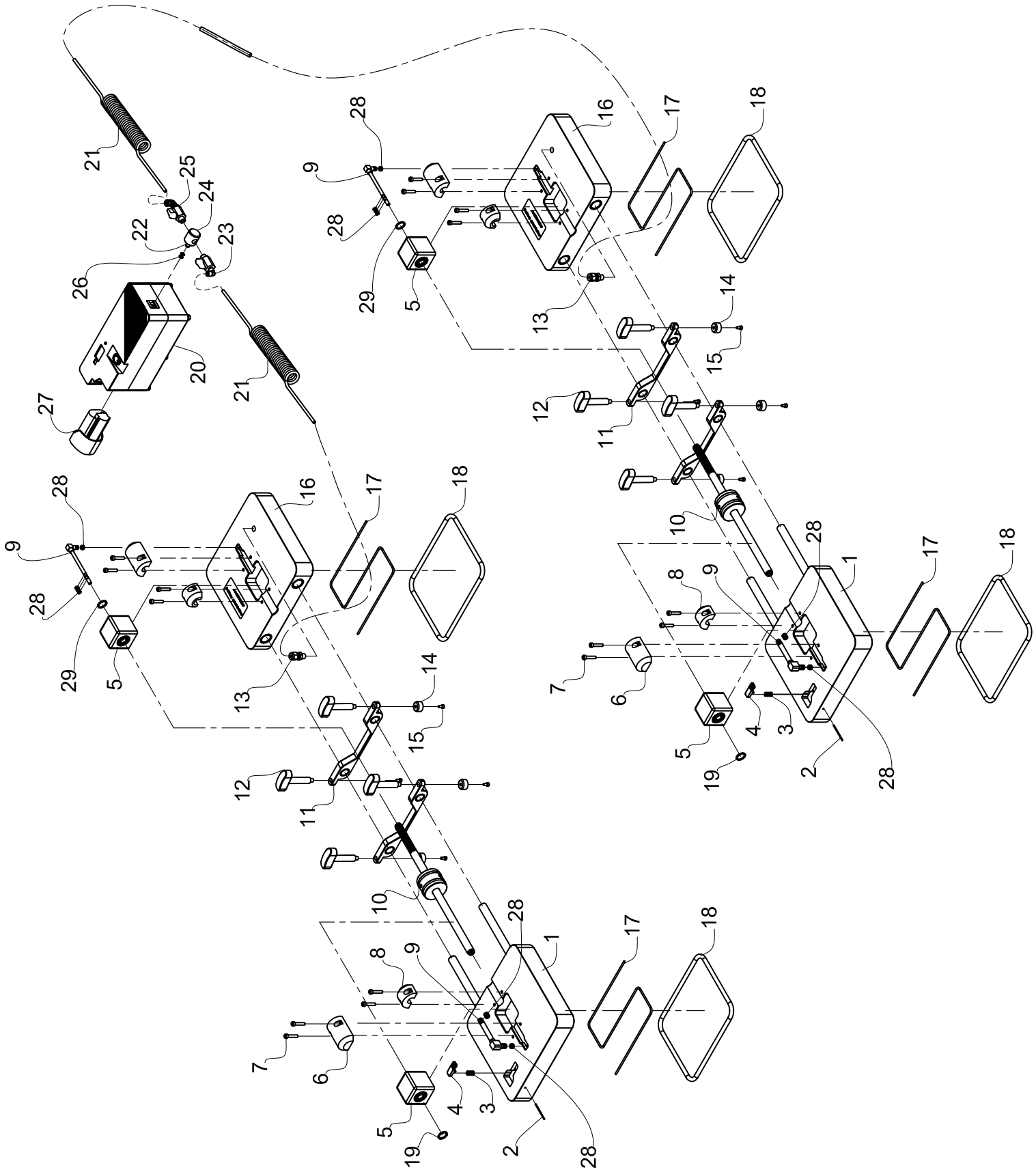
**Note:** A safe working vacuum level is maintained at all times. When the vacuum pressure level is low, the vacuum pump will act. When the vacuum pressure level is high, the vacuum pump will turn off (battery-saving). The battery and pressure indicators are easily observed on the digital display.

- Press the power button located on the battery vacuum pump and observe the vacuum level. When the vacuum reaches -64 kPa (or the green light stayed on the battery vacuum pump is ON), the joint setter can already work safely.
- Open the valve stayed on the air hose to supply the vacuum into the vacuum bases.
- Adjust the leveling knobs, and make sure they are fitted with the surface of the seaming materials.

**Note:** Four leveling knobs provide the ultimate control over both sides of the seam.

- Use the palms to roll the rollers stayed on the main axles of the joint setter. At this timing, the two-material will be pulled closer together.
- When the materials are jointed tightly, the user uses the tool to check the plane of the surface of two material sheets to ensure the surfaces to be leveled precisely. In case the surfaces are not flattening together, the user can adjust the leveling knobs to tighten the surfaces until they are even with each other.
- When completing joints between the surface of two material sheets, the user turns the exhaust valve located on the surface of the vacuum bases to take the Battery Joint Setter out of the materials.

# DRAWING LIST



# **PARTS LIST**

<b>POS.</b>	<b>CODE</b>	<b>DESCRIPTION</b>	<b>Q'TY</b>
01	BOSS - 001	Plate with exhaust valve	02
02	BOSS - 002	Pin $\phi 2 \times 53$	02
03	BOSS - 003	Spring	02
04	BOSS - 004	Exhaust valve	02
05	BOSS - 005	Bearing holder	04
06	BOSS - 006	Long pad	04
07	BOSS - 007	Bolt M5 x 25	16
08	BOSS - 008	Short pad	04
09	BOSS - 009	Elbow Male Connectors $\phi 7.5$	04
10	BOSS - 010	Main axle	02
11	BOSS - 011	Horizontal pad	04
12	BOSS - 012	Level adjust pad	08
13	BOSS - 013	Connectors Male Tube $\phi 6 -1/8''$	02
14	BOSS - 014	Plastic piece	08
15	BOSS - 015	Bolt M4 x 8	08
16	BOSS - 016	Plate connect vacuum	02
17	BOSS - 017	Seal $\phi 2.5$	04
18	BOSS - 018	Sponge rubber seal foam	04
19	BOSS - 019	Circlip $\phi 15$	02
20	BOSS - 020	Vacuum Pump & Vacuum Reservoir	02
21	BOSS - 021	Spiral Hose $\phi 6$	02
22	BOSS - 022	O ring $\phi 6 \times 1.5$	02
23	BOSS - 023	Elbow Male Tube $\phi 6 \times 1/4''$	02
24	BOSS - 024	Divide $1/4''$	01
25	BOSS - 025	Ball Valve $1/4''$	02
26	BOSS - 026	O-ring $\phi 6.5 \times 1.5$	02
27	BOSS - 027	Battery	01
28	BOSS - 028	O-ring $\phi 3 \times 2$	20
29	BOSS - 029	Circlip $\phi 13$	02

# FEATURES

- Light and compact design.
- Easy and convenient to use.
- Four leveling knobs keep the joints flush.
- The fast and powerful tightening mechanism.
- Close or open seams by easily rotating the roller nut with your palm.
- Battery-operated vacuum pump.
- Integrated exhaust valve to release the vacuum.
- It joins, leveling knobs, and flattens warped stone to help user consistently produce virtually invisible seams. The joint setter is accessible design allows user to view the seam and make adjustments the seam while it's in use.
- The BOSS is made with high-quality components, such as anodized billet aluminum and stainless steel, for the durability user need and quality user expect.

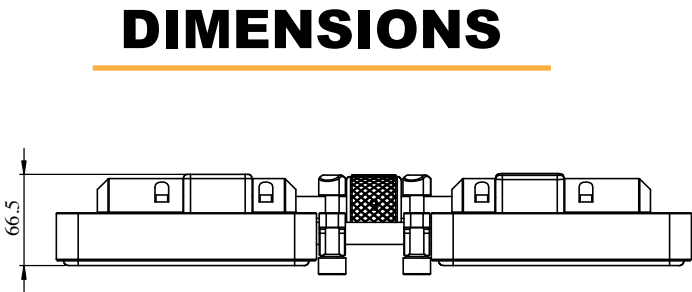
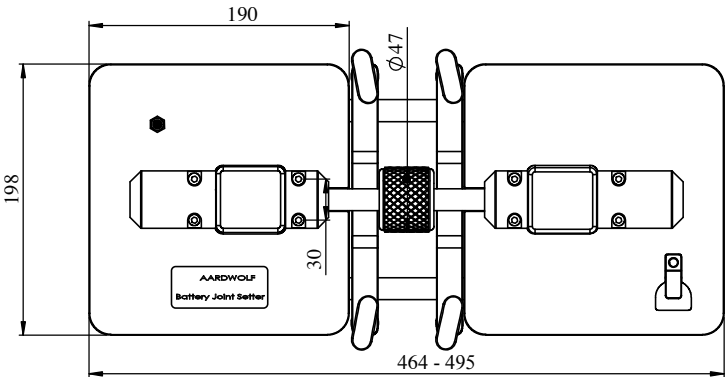
**Note:** Sold in set: two pairs of Joint Setter and battery-powered vacuum pump.

# SPECIFICATION

BOSS	Metric	Imperial
Net weight	14.8 kg	32.6 lb
Gross weight	17 kg	37.5 lb
Powered by a 12V-1500mAh battery		
Packaging dimensions	600 x 290 x 280 mm	23.6 x 11.4 x 11 in
Number of vacuum bases	2	
Vacuum base sizes	198 x 190 mm	7.8 x 7.5 in

## Information of the battery vacuum pump:

- Vacuum reservoir. 770 cm<sup>3</sup> (47"³).
  - Max Flow Rate: 13 liters/minute (0.46 cfm).
  - Max Vacuum: -80 kpa.
  - Dual-port configuration.
  - Integrated non-return valve.
- Sturdy rectangular case to stay upright.
  - Vacuum level indicator with LED indicator.
  - Water-resistant to withstand direct rain.
  - Voltage: 12V.
  - Weight: 1.88 kgs (4.15 lbs).



# INSPECTIONS, MAINTENANCE AND REPAIR

- Make a regular procedure for the Battery Joint Setter inspection and maintenance. The frequency of inspection will depend upon the amount of use of the joint setter. The maintenance should be conducted in a written record, indicating inspection dates, the condition of the joint setter on each of those dates, and any repairs made.
- Always keep necessary spare parts on hand and use only original spare parts when carrying out repairs or maintenance.
- Leveling knobs and rollers, main axles, sub axles, battery vacuum pump, ball valves, exhaust valves need to be checked and tightened regular. Ensure that the welded joints are free from any defect or damage like separation, cracks, etc.
- Make sure that all of the vacuum bases are in a good situation during operating.
- Store the Battery Joint Setter in a cool and dry place.

## WARRANTY

At the time of delivery, it is necessary to check that the Battery Joint Setter (BOSS) has not been damaged during shipment. Any claims must be presented within eight days from the date of delivery. We grant one year warranty on the Battery Joint Setter from the date of purchase.

### Warranty coverage is not applicable:

- The user failed to comply with the instructions in the manual.
- Damages are due to inadequate maintenance and inspections.
- Damages are due to improper storage and/or usage.
- Repairs were performed by the user without our permission.
- Non-original spare parts were used.



## WE ARE PROVIDING

SIMPLE, REALIABLE, COST SAVING  
AND **AWESOME IDEAS** FOR YOUR BUSINESS



SCAN ME TO SEE  
PRODUCTS VIDEO

### FIND YOUR NEAREST AARDWOLF FACTORY SERVICE CENTRE NEAR YOU

#### AMERICA

19201 South Reyes Avenue, Suite A3 Rancho Dominguez California,  
Tell: (562) 553-6050 90221  
www.aardwolfusa.com Email: leo@aardwolfusa.com

#### AUSTRALIA

1/5 Stanton Road, Seven Hills NSW 2147  
Tell: 02 9838 8427  
www.aardwolfaustralia.com Email: enquiries@aardwolfaustralia.com

#### GERMANY

Schulze-Delitzsche Weg 2, 33175 Bad Lippspringe  
Tell: 05252 8382830

#### INDIA

Harmara Road, Industrial area, Madanganj, Kishangarh, Rajasthan n India  
Pin no. 305801 Mob: +91 73000-68444 Tell: +91 9358448474  
Web: www.aardwolf.co.in Email: sales@aardwolf.co.in