



AARDWOLF VACUUM LIFTERS

OWNER'S MANUAL**Product Code : AVL M1****CONTENTS**

- 1. Specifications & Features / 2. Parts drawings & Parts Lists / 3. Operating Instructions**
- 4. Air Regulator Gauge / 5. Inspections & Maintenance / 7. Warranty**

The Vacuum Lifters are designed to lift smooth or rough marble and granite slabs. Featuring rugged construction with the ability to lift and tilt materials. Powered by compressed air.



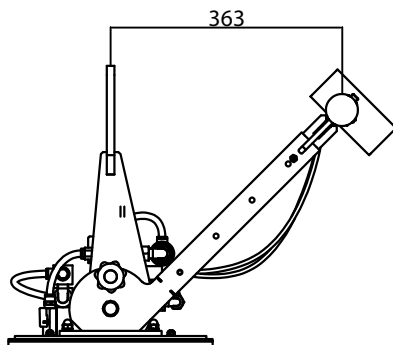
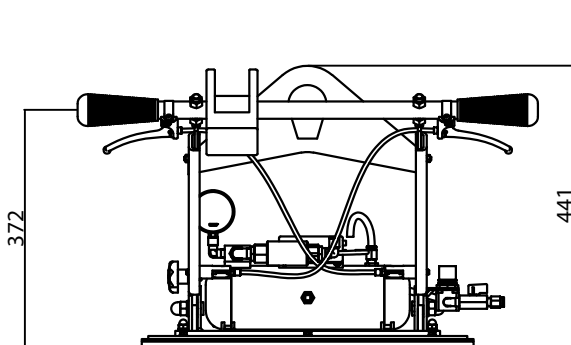
1. SPECIFICATIONS & FEATURES

1. SPECIFICATIONS

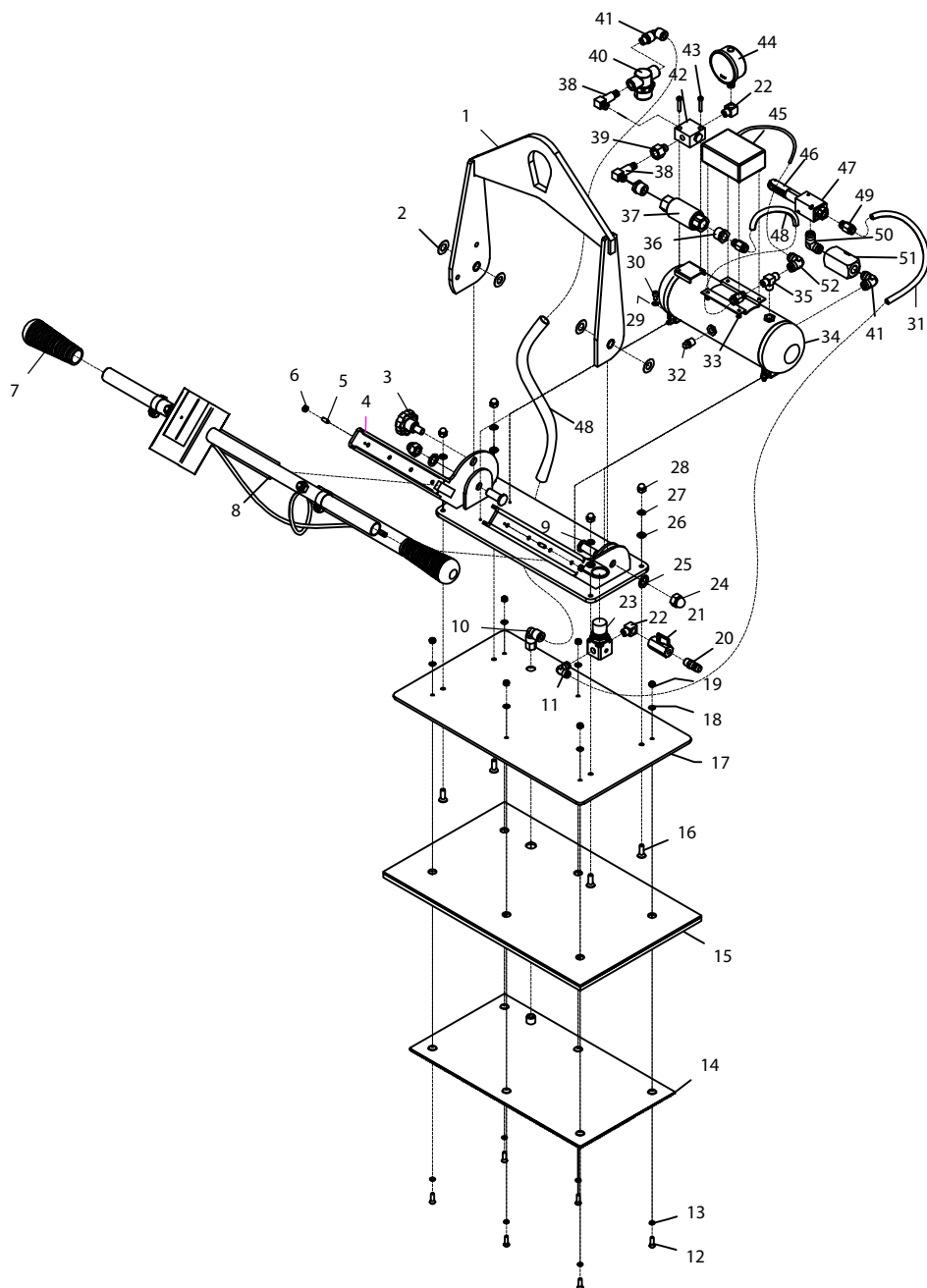
Number of pad		1
Lifting capacity	Pad size	
	400 x 220 mm	125 kgs
	520 x 320 mm	250 kgs
Net weight		28 kgs
Gross weight		41 kgs
Packaging dimensions		780 x 700 x 500 mm
Compressed air requirement		100 litres/ minute

1. FEATURES

- Compact and sturdy structure
- Handling the materials with capacity 250 kgs
- Pneumatic vertical-horizontal tilting from 0 to 90° manual.
- The guide rod can be adjusted the length for handling the lifter easily.
- Acoustic and visual alarm system powered by a rechargeable 3.7V battery.
- Slide valve with ON/OFF position for attaching and releasing of material.



AVLM1 - VACUUM LIFTER ASSEMBLY DIAGRAM



PARTS LIST - AVLMM1

NO.	CODE	PART NAME	QTY
1	AVLM1-001	Hook	01
2	AVLM1-002	Tooth Washer Ø14	04
3	AVLM1-003	Turning Knob	01
4	AVLM1-004	Body	01
5	AVLM1-005	Hexagon Socket Set Screws With Dog Point M6 x 16	02
6	AVLM1-006	Hexagon nuts M6	02
7	AVLM1-007	Handhold	02
8	AVLM1-008	Handle	01
9	AVLM1-009	Rotary Pin	02
10	AVLM1-010	Elbow Female Tube Ø10 x 1/4	01
11	AVLM1-011	Elbow Male Tube Ø10 x 1/4	02
12	AVLM1-012	Countersunk Screw M6 x 16	06
13	AVLM1-013	O-ring Seals Ø6	06
14	AVLM1-014	Right Plate Limit	01
15	AVLM1-015	Right Vacuum Pad	01
16	AVLM1-016	Countersunk Screw M8 x 25	04
17	AVLM1-017	Right Vacuum Base	01
18	AVLM1-018	Plain Washer M6	06
19	AVLM1-019	Nut M6	06
20	AVLM1-020	Quick Connectors Male Tube Ø10 x 1/4	01
21	AVLM1-021	Ball Valve 1/4	01
22	AVLM1-022	Elbow 90° Brass Male x Female 1/4 x 1/4	02
23	AVLM1-023	Pressure Controller (MAR 200 - 8A)	01
24	AVLM1-024	Domed Cap Nuts M14 x 1.5	02
25	AVLM1-025	Spring Washer M14	02
26	AVLM1-026	Plain Washer M8	04
27	AVLM1-027	Spring Washer M8	04
28	AVLM1-028	Domed Cap Nuts M8	04
29	AVLM1-029	Spring Washer M6	04
30	AVLM1-030	Socket Head M6 x 10	04
31	AVLM1-031	Air Hose Ø10 x 300	01
32	AVLM1-032	Air Outlet Valve 1/4	01
33	AVLM1-033	Nut M5	04
34	AVLM1-034	Vacuum Tank	01
35	AVLM1-035	Tees Brass Male x Female x Female Tubefit 1/4	01
36	AVLM1-036	Bushes Reducing 1/2x3/8	02
37	AVLM1-037	Slide Valve 3/8	01
38	AVLM1-038	L-connector - Male x Male 1/4 x 1/4	02
39	AVLM1-039	Bushes Male x Female 1/4 x 1/4	01
40	AVLM1-040	Filter AF-10	01
41	AVLM1-041	Elbow Male Tube Ø10 x 3/8	02
42	AVLM1-042	Crosses - Tubefit	01
43	AVLM1-043	Socket Head M5 x 25	02
44	AVLM1-044	Vacuum Gauge	01
45	AVLM1-045	Warning Horn	01
46	AVLM1-046	Silencer	01
47	AVLM1-047	Vacuum Pump EV - 20	01
48	AVLM1-048	Air Hose Ø10 x 130	02
49	AVLM1-049	Connectors Male Tube Ø10 x 1/4	03
50	AVLM1-050	Elbow 90° Brass Male x Male 3/8 x 3/8	01
51	AVLM1-051	Check Valve 3/8	01
52	AVLM1-052	Elbow Male Tube Ø6 x 1/4	01

3. OPERATING INSTRUCTIONS

3.1 BEFORE OPERATING THE LIFTER

- Attaching the lifter to hoisting equipment:
- Determine whether the capacity of the crane, hoist, sling and other attachments is suitable for combining with the AVLM1 and max. load weight as well.
- Perform a load test for the lifter before handling the load.

3.2 SAFETY INSTRUCTIONS:

- Carefully read the user manual before operating.
- Only competent and authorised personnel can operate the lifter.
- Ensure that the manual is available during operation.
- Always wear appropriate protective equipment.
- Avoid operating the lifter in rain.
- Make sure that the vacuum pad surface is clean and free from dirt and oil.
- Make sure that there is no obstructions during working process.
- Perform the test of load, vacuum pumping and warning light to ensure safety.
- The load must not exceed the maximum allowable weight specified.
- The load must be a single sheet with a smooth and non-porous surface.
- Always place the vacuum pads correctly and make sure it is balanced.
- The lifter is not allowed to lift and must stay clear of suspended load if the vacuum level is lower than 53 kPa (40 CmHg) and the red warning light is turned on.
- To avoid injury, no one is allowed to stand under the load.
- Do not carry out any lifting operations if any issue is found.
- Never lift a load when the vacuum indicator shows inadequate vacuum pressure.
- Never operate the lifter that is damaged, malfunctioning or missing parts.
- Never operate the lifter if the edges of the vacuum pad are cut or damaged.
- Never operate a lifter if the labels for load capacity or any other warnings are missing, obscure or unclear.
- Never turn the slide valve OFF position (on the handle control) during the lifting process. This may result in loss of vacuum and unexpected release of the load.
- Never lift a load over people.
- Never use the lifter in dangerous environments .
- All inspections and tests must be carried out before lifting.

NOTE: Aardwolf Industries LLC denies any claims due to failure of unexpected load release or human and/or material losses in event of employing non-original pads.

3.3 INSTRUCTIONS FRO USE:

Step 1: Connect the AVLM1 to a crane or other hoisting equipment to start.

Step 2: Carefully connect the air hose into the ball valve of lifter before lifting.

Step 3: Place the lifter in the center of the slab for balancing to ensure safety during the lifting process.

Step 4: Open the ball valve to create the vacuum.

Step 5: Turn on the slide valve to supply the vacuum into the vacuum pads.

3. OPERATING INSTRUCTIONS

Step 7: Lift and move the material:

- Use your hands to loose the bolt and flip the stone slab 90 degree in a vertical direction. After that screw the nut tightly.
- Use your hands to loose the bolt and flip the stone slab 90 degree in a horizontal direction.

After that screw the nut tightly.

Step 8: When the material is placed down to the desired location, press the Safety Button and slide the slider valve to the OFF position to stop the vacuum pumping and release material.

Step 9: Carefully take disconnect the air hose to finish the lifting process.

NOTE: Depending on the dimensions of the material, the user can adjust the length of the guide rod by pressing the Push-Button.

4. AIR REGULATOR GAUGE

The Air Regulator Gauge is used to indicate the pressure levels which are supplied to the system. The pressure can be adjusted by a pressure controller.

NOTE: The Vacuum Lifter is already adjusted for pressure optimization. It is recommended that the operator DOES NOT adjust the pressure level unless the lifter be adjusted to the pressure level to suit the environment regulations in your country. And here is the way to adjust the pressure level:

- Lift the pressure controller up which is located on the cover to adjust:
 - Adjust the pressure in clockwise direction to increase the pressure level which reaches 0.8 MPa (116 Psi).
 - Adjust the pressure in anti-clockwise direction to decrease the pressure level which reaches 0.6 MPa (87 Psi).
- After the required pressure is achieved, push the pressure controller down to lock it tightly.

5. INSPECTIONS AND MAINTENANCE

How to protect and increase life expectancy for the lifter? The following will be the best ways that you need:

4.1 INSPECTIONS

Check the AVLM1 series carefully and regularly to avoid the following faults:

- Contamination or debris on vacuum pads and load surfaces.
- Visual damages of the lifter's structure and vacuum system.
- Listen for unusual vibration or noise while operating the lifter.
- Cracks, cuts, corrosion or any deficiency affected entire lifter.
- Missing parts.
- Damaged edges of the device while sealing.
- Repair all faults before using the lifter.

4.2 MAINTENANCE

A good maintenance planning will bring benefits for your lifter. It not only increases safety and using values, but also reduces maintenance cost:

- Perform maintenance periodically.

- Perform simple maintenance tasks for the lifter such as repairing, replacing grease so that the lifter runs smoothly.
- Check the rubber pads to ensure that they are free from dirt and damages
- You must clean the air filter to eliminate dust or contamination.
- Release the water in the vacuum tank is located on the bottom by screwing the air outlet valve.
- If the lifter is used for less than one day in a two-week period, you should perform an inspection and maintenance to ensure that the lifter is safe and does not have any faults.
- The lifter may experience normal wear and tear and ageing. You should replace any reduced quality parts with new original parts.
- The lifter and hoisting accessories must be stored in a place where they are protected against weather conditions and aggressive substances.

7. WARRANTY

After receiving the product, the buyer should check, based on the spare parts list and spare drawings attached to the product, that the spare parts have not been damaged or lost during shipment. Any damages or losses must be officially reported to The Aardwolf Industries LLC within eight days from the date of purchase.

This lifter is granted a 12-month warranty based on The Aardwolf Industries LLC's warranty policy from the date of purchase.

The warranty coverage is not applicable when:

- The lifter is handled incorrectly during manoeuvring.
- The operator fails to comply with the instructions in this manual.
- The lifter's maximum permissible capacity is exceeded
- The specifications for stone slab thickness are not followed.
- Damages are due to inadequate maintenance and inspections.
- Damage is due to improper storage.
- Repairs were performed by the user without our permission.
- Unofficial spare parts were used.

DISCLAIMER:

The Aardwolf Industries LLC's warranty does not cover the incorrect assembly and misuse of the lifter, the lack of maintenance and repair of the lifter as scheduled by the manufacturer, the operation carried out by non-competent or non-authorised operators or unofficial spare parts being used or installed.



VIETNAM

AARDWOLF VIETNAM

- 📍 1B, An Phu, Thuan An, Binh Duong, Vietnam.

☎ +84 274 371 2827438/39
✉ sales@aardwolf.com.vn
🌐 www.aardwolf.com.vn

AUSTRALIA

AARDWOLF AUSTRALIA

- 📍 Unit 1, 5 Stanton Road, Seven Hills NSW 2147 Australia.

☎ +0422 916 907
✉ enquiries@aardwolfaustralia.com
🌐 www.aardwolfaustralia.com

GERMANY

STONE GLASS EQUIPMENT UG

- 📍 Am Gutsteich 11, 08451 Crimmitschau/ Blankenhain, Germany.

☎ +49 366 0821 9236
✉ sales@aardwolf.com.de
🌐 www.aardwolf.com.de

INDIA

AARDWOLF KISHANGARH

- 📍 Harmara Road, Industrial Area, Madanganj, Kishangarh, Rajasthan India / Pin no. 305801

☎ Tel: +91 7300068444
✉ sales@aardwolf.co.in
🌐 Web: www.aardwolf.co.in

AARDWOLF BENGALURU

- 📍 No: 6, Sharma Complex, 3rd Cross, Ganesha Block, Dinnur Main Road, R. T. Nagar P.O Bengaluru -560032

☎ +91 98451 62959/ 91 99017 24600
✉ bengaluru@aardwolf.co.in
🌐 www.aardwolf.co.in

AARDWOLF MUMBAI

- ☎ +91 97659 06007
✉ mumbai@aardwolf.co.in
🌐 www.aardwolf.co.in

AMERICA

AARDWOLF AMERICA

- 📍 19201 S Reyes Avenue, Unit C7 Compton California, 90221

☎ (562) 553-6050
✉ leo@aardwolf.us.com
🌐 www.aardwolf.com.au

