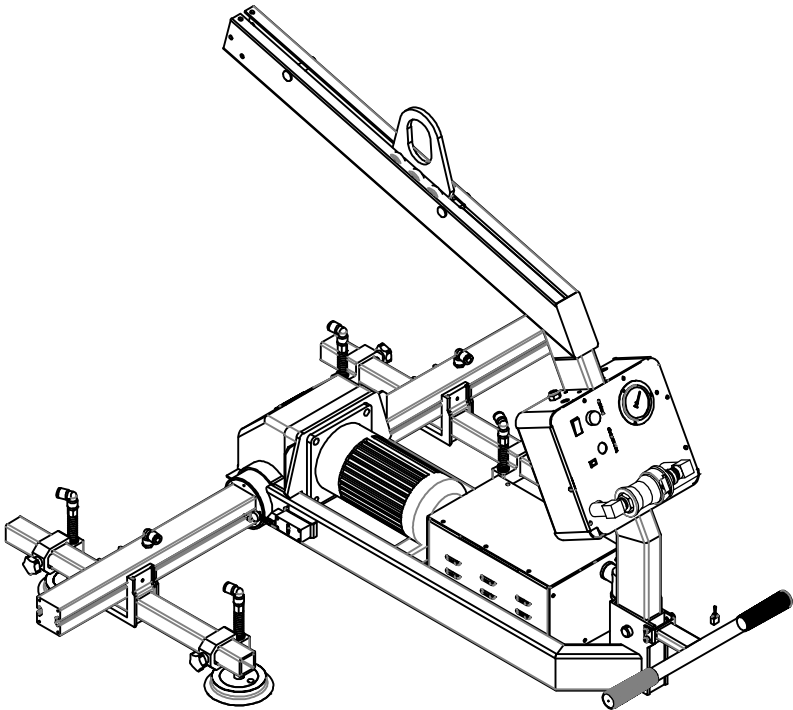




# AARDWOLF VACUUM LIFTERS

**AERV-180-ELECTRIC ROTATION VACUUM LIFTER****OWNER'S MANUAL****CONTENTS**

The 180° Electric Rotation Vacuum Lifter AERV-180 is uniquely useful in rotating and lifting stone and glass sheets in various directions of 90° -180°.



## CONTENTS

**SPECIFICATIONS & FEATURES** ► **PARTS DRAWING & PART LIST** ► **OPERATING INSTRUCTIONS**

**INSPECTIONS & MAINTENANCE** ► **WARRANTY**



# 1. SPECIFICATIONS & FEATURES

## 1.1 SPECIFICATIONS

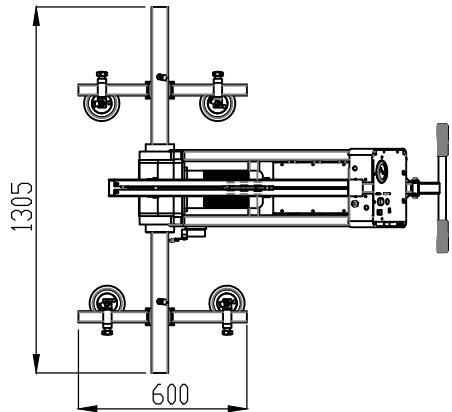
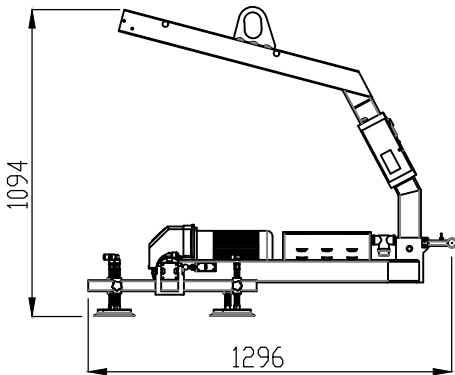
	Metric (mm-kg)	Imperial (inch-lb)
Working load limit	160	353
Net weight	60	132
Pad diameter	200	8"
Number of pad	4	

### Motor information

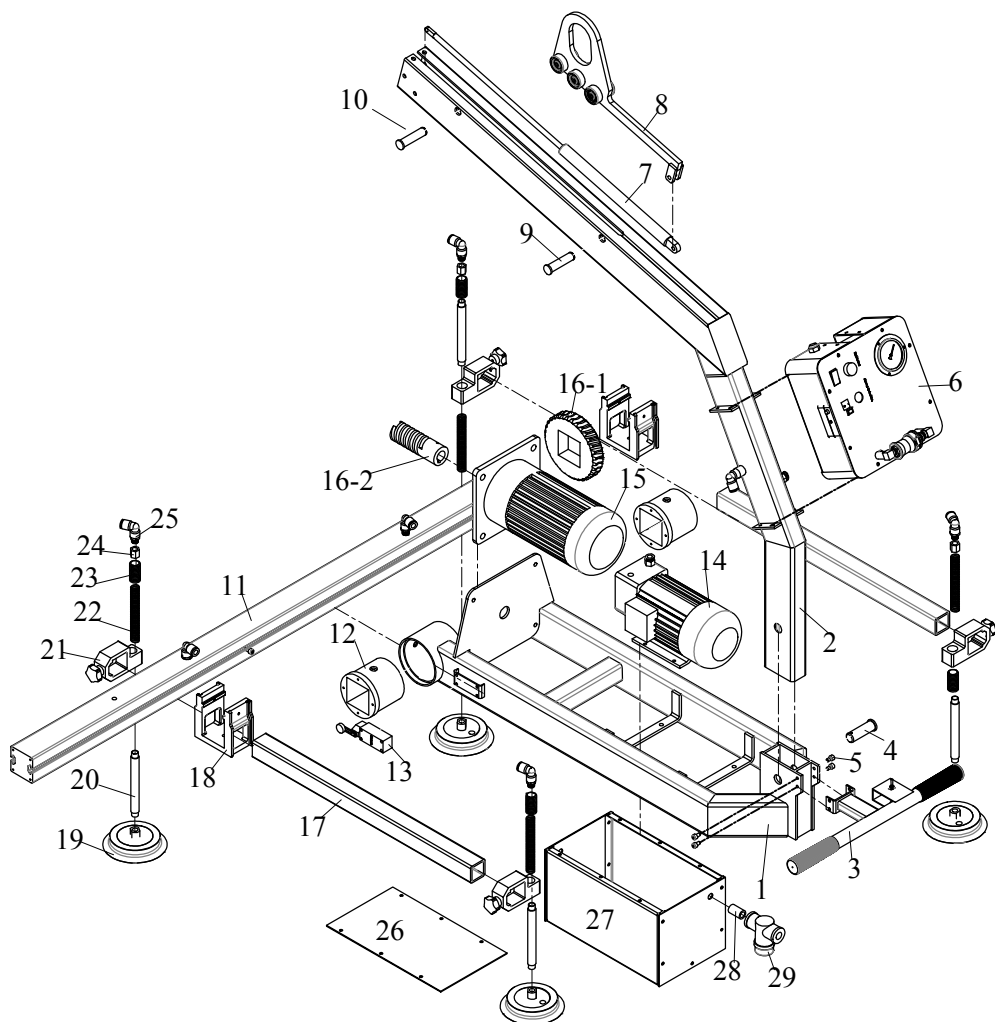
Input supply	AC 220V-1 phase 50/60Hz
Motor power	1/4HP
Vacuum flow rate	4.1/4.7 m3/hour

## 1.2 FEATURES

- 220V single-phase electric motor.
- Gas spring-controlled hook attachment.
- Self-adjustment and balance.
- Attach/release materials with an ON/OFF slide valve.
- The pressure control system automatically activates the vacuum pump once the pressure is lower than the allowed limit.
- Audio/visual safety system.



### Electric Rotation Vacuum Lifter - AERV-180 ASSEMBLY DIAGRAM



## 2. PART DRAWING & PARTS LIST

ITEM NO	PART NUMBER	DESCRIPTION	Q'TY
1	Under frame		1
2	Upper frame		1
3	Handle		1
4	Pin Ø20		1
5	Bolt and nut		1
6	Control box		1
7	Spring gas		1
8	Shackle-wheel		1
9	Pin Ø16		2
10	Pin Ø8		1
11	Beam 60x60		1
12	Pin bearing		1
13	Switch journey		1
14	Vacuum pump		1
15	Motor gear		1
16-1	Worm gear 1		1
16-2	Worm gear 2		1
17	Beam 40x40		2
18	Bracket		2
19	Suction pad 150 mm		4
20	Iron-tube		4
21	Pad bracket		4
22	Spring		4
23	Screw bush 21		4
24	Jonit 1/4"		4
25	Elbow male tube 6-1/4		10
26	Lid box		1
27	Vacuum pump box		1
28	Screw bush 17		1
29	Fitter vacuum		1

### 3. OPERATING INSTRUCTIONS

*To ensure safety during operation, the operator must carefully read these instructions to avoid injury, death or damage while using the AERV-180.*

#### 4.1 BEFORE OPERATING THE LIFTER

##### **Attaching the lifter to hoisting equipment:**

- Determine whether the capacity of a crane or hoist is suitable for use with the AERV-180.
- Determine the capacity of hoisting equipment (crane and hoist, when applicable) that is suitable for the maximum load weight plus lifter weight.
- Connect the electrical connectors uniting the battery to the battery charge and the vacuum generating system. Now the lifter is operational.
- Perform a load test for the lifter before handling the load.

##### **Connecting to the power supply:**

- The lifter is powered by a 220V single phase motor
- Disconnect the power source when not in use.

##### **Safety instructions:**

- Only competent and authorized personnel should operate the lifter.
- Follow the safety regulations stipulated by local authorities.
- Ensure that the manual is available during operation.
- Always wear appropriate protective equipment.
- Always check the electric cabinet and motors before lifting the load.
- Put the vacuum pads of the AERV-180 on the materials and turn on the power source on the electric cabinet.
- Move the vacuum slide on. Waiting for vacuum enough ( Green area on vacuum gauge)
- Lift and move the material to the desired location.
- Set it down and move the vacuum slide off to release the material.
- Lower the parking to protect the vacuum pads.
- Turn off the power source when the lifter is not used.

CE – Declaration of conformity: we declare that the lifter is in conformity with the following standard: The Machinery Directive 2006/42/EC.

### INSPECTIONS

Check the AERV-180 regularly to make sure it does not exhibit the following faults:

- Check that the electric cabinet is disconnected before servicing the lifter.
- Check the vacuum pads and load surfaces for contamination or debris.
- Check the lifter's structure and vacuum system for visual damage.
- Check the air filter to ensure it is clean.
- Check for unusual vibrations or noise while operating the device.
- Check the entire device for cracks, cuts, corrosion or any deficiency
- Check that the device has no missing parts.
- Check that the edges of the device are not cut or damaged while sealing.
- Repair all faults before using the device.

### MAINTENANCE

Using the right equipment is as important as using the right maintenance solutions and the best techniques. These guidelines are intended to provide basic maintenance for the lifter. This could increase the lifespan of the equipment.

- Check the vacuum pads to ensure that they are free from dirt and that the edges of the rubber pads are not cut or damaged.
- The operator must clean the air filter to eliminate dust or contamination.
- If the lifter is used for less than one day in a two-week period, the operator should perform an inspection and maintenance to ensure that the lifter is safe and does not have any faults.
- The lifter may experience normal wear and tear and ageing. The operator should replace any reduced quality parts with new original parts.
- Keep the lifter in storage and dry conditions to avoid damage.
- Perform simple maintenance tasks for the lifter such as repairing, replacing grease so that the lifter runs smoothly.
- Perform simple maintenance tasks for the lifter such as repairing, replacing grease so that the lifter runs smoothly.

- Check the rubber pads to ensure that they are free from dirt and damages
- You must clean the air filter to eliminate dust or contamination.
- Release the water in the vacuum tank is located on the bottom by screwing the air outlet valve.
- If the lifter is used for less than one day in a two-week period, you should perform an inspection and maintenance to ensure that the lifter is safe and does not have any faults.
- The lifter may experience normal wear and tear and ageing. You should replace any reduced quality parts with new original parts.
- The lifter and hoisting accessories must be stored in a place where they are protected against weather conditions and aggressive substances.

## 6. WARRANTY

After receiving the product, the buyer should check, based on the spare parts list and spare drawings attached to the product, that the spare parts have not been damaged or lost during shipment. Any damages or losses must be officially reported to The Aardwolf Industries LLC within eight days from the date of purchase.

This lifter is granted a 12-month warranty based on The Aardwolf Industries LLC's warranty policy from the date of purchase.

The warranty coverage is not applicable when:

- The lifter is handled incorrectly during manoeuvring.
- The operator fails to comply with the instructions in this manual.
- The lifter's maximum permissible capacity is exceeded
- The specifications for stone slab thickness are not followed.
- Damages are due to inadequate maintenance and inspections.
- Damage is due to improper storage.
- Repairs were performed by the user without our permission.
- Unofficial spare parts were used.

### **DISCLAIMER:**

The Aardwolf Industries LLC's warranty does not cover the incorrect assembly and misuse of the lifter, the lack of maintenance and repair of the lifter as scheduled by the manufacturer, the operation carried out by non-competent or non-authorised operators or unofficial spare parts being used or installed.



## AMERICA



### AARDWOLF AMERICA

- 📍 19201 S Reyes Avenue, Unit C7  
Compton California, 90221
- ☎ (562) 553-6050
- ✉ leo@aardwolfusa.com
- 🌐 www.aardwolfusa.com

## AUSTRALIA



### AARDWOLF AUSTRALIA

- 📍 1/5 Stanton Road,  
Seven Hills NSW 2147
- ☎ +02 9838 8427
- ✉ enquiries@aardwolfaustralia.com
- 🌐 www.aardwolfaustralia.com

## GERMANY



### STONE GLASS EQUIPMENT UG

- 📍 Am Gutstüch 11, 8451 Crimmitschau  
Blankenhain, Germany.
- ☎ +49 366 0811 9236
- ✉ sales@aardwolf.com.de
- 🌐 www.aardwolf.com.de

## INDIA



### AARDWOLF NORTH INDIA

- 📍 Harmara Road, Industrial area,  
Madanganj, Kishangarh. District-  
Ajmer, Rajasthan. / Pin 305801
- ☎ Tel: 7300068444 / 8824336757
- ✉ sales@aardwolf.co.in
- 🌐 Web: www.aardwolf.co.in

## VIETNAM



### AARDWOLF VIETNAM

- 📍 1B, An Phu, Thuan An,  
Binh Duong, Vietnam.
- ☎ +84 274 371 2827438/39
- ✉ sales@aardwolf.com.au
- 🌐 www.aardwolf.com.au

