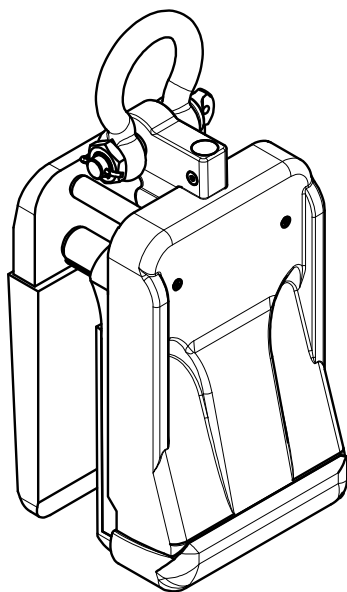




AARDWOLF SLAB LIFTER 75A

OWNER'S MANUAL

PRODUCT CODE: AL75A



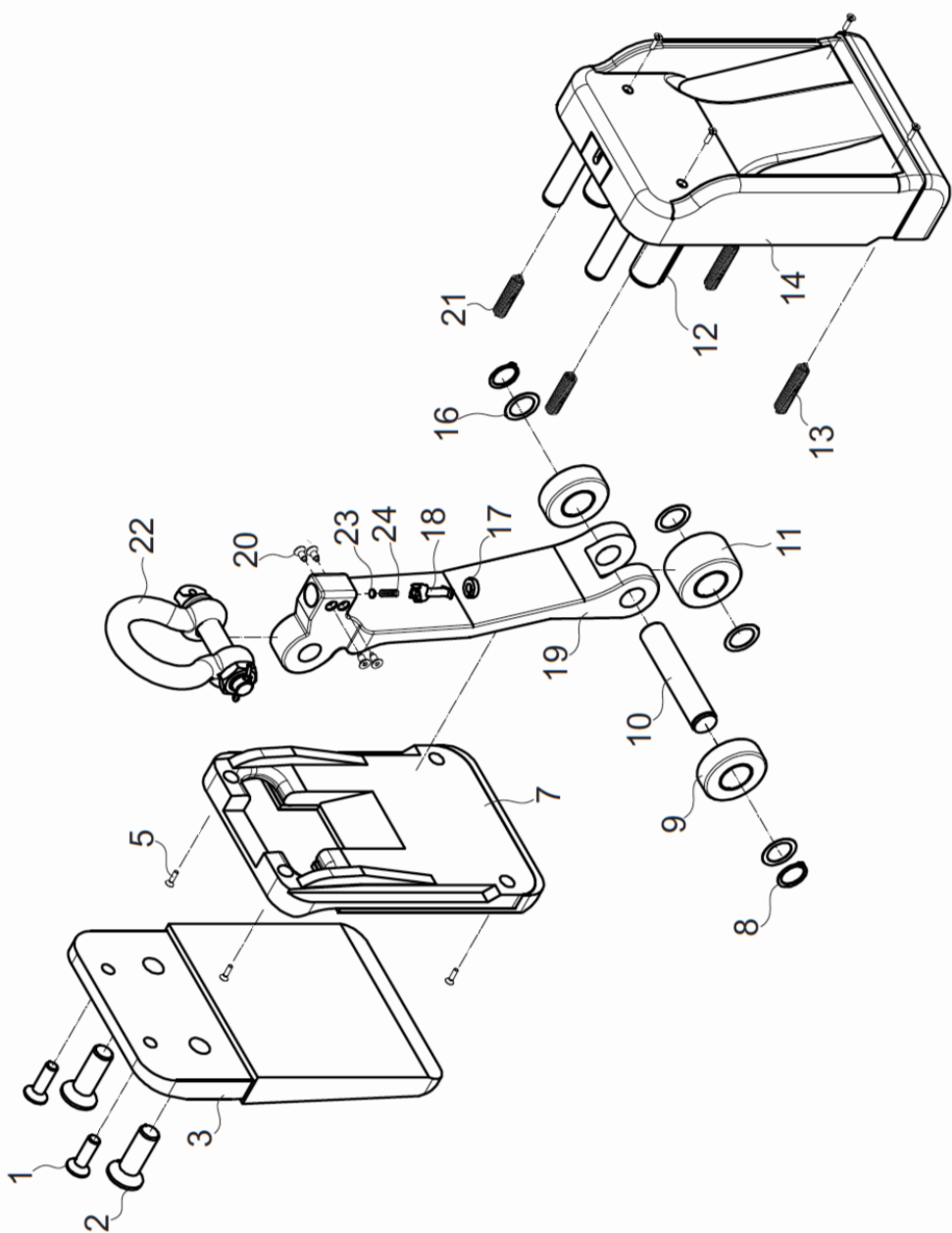
CONTENTS

**PARTDRAWING ► PARTLIST ► GENERAL ► SAFETY INSTRUCTIONS ► INSTRUCTIONS FOR USE
INSPECTIONS, MAINTENANCE & REPAIR ► TECHNICAL SPECIFICATION ► WARRANTY ► EXAMPLE**

Aardwolf offers a new version of its Invented Slab Lifting Clamps. The new Aardwolf Slab Lifter Automatic AL75A has an integrated auto-lock, unlock mechanism, which allows the clamp to automatically grip slabs on pick-up and release the slabs on set down. In many situations, this makes moving and handling of slabs safer and more convenient.



ASSEMBLY DIAGRAM



POSITION	DESCRIPTION	CODE	QTY
1	Hexagon socket countersunk head screw M12x40	AL75A-001	02
2	Hexagon socket countersunk head screw M20x60	AL75A-002	02
3	Back plate	AL75A-003	01
5	Tapping screw M4x15	AL75A-005	08
7	Center sliding plate	AL75A-007	01
8	Circlips Ø25	AL75A-008	02
9	Outer pressure wheel	AL75A-009	02
10	Shaft	AL75A-010	01
11	Inner pressure wheel	AL75A-011	01
12	Rubber pieces	AL75A-012	02
13	Bottom extension spring	AL75A-013	02
14	Camplate	AL75A-014	01
16	Brass washer Ø25	AL75A-016	04
17	Plastic cap	AL75A-017	01
18	Locking pin	AL75A-018	01
19	Lifting pin	AL75A-019	01
20	Hexagon socket countersunk head screw M6x10	AL75A-020	04
21	Top extension spring	AL75A-021	02
22	Shackle	AL75A-022	01
23	Spring cap	AL75A-023	01
24	Small spring	AL75A-024	01

Update: June 4th , 2020



Purpose of this Manual:

The purpose of this manual is to assist the operator in the correct use of the Slab Lifter, to provide information on the safe use of the Slab Lifter and to eliminate any risks that might be caused by the incorrect use of the Slab Lifter. The lifting clamp must be used only for the purpose for which it has been made, namely for lifting and moving slab form loads with smooth surfaces. Any other use is to be considered improper, and consequently, dangerous. The manufacture cannot be held responsible for any damage to people or things by improper, incorrect or unreasonable use of the machine.

This user manual should be read, trained, and understood by operators prior to use, and should form part of a broader, safe operating procedure for moving slabs utilising the AL75A clamp using a forklift and/or gantry crane.

Introduction:

The Aardwolf Slab Lifter series is the equipment for lifting and moving of slab-form materials with smooth surfaces. The Aardwolf Slab Lifter incorporates a spring-loaded latch that automatically releases the lifter from the slab once the slab has been fully lowered to the ground. The operating process becomes simple by one man user's interaction only. And it can be used in and outside the factory. Aardwolf is always upgrading of latest technologies for this product line to make the operating process becomes easier to lift and move of slabs safer and more convenient. Specially, the Aardwolf Slab Lifter Automatic allows the clamp to automatically grip slabs on pick-up and release the slabs on set down by auto-lock and un-lock mechanism. And If you are wondering how to lift and move safely and efficient thin sheets as engineered porcelain, glass and other thin ceramic sheets, the Aardwolf Slab Lifter AL30AWJ is the best solution for you. This lifter is not only providing a bigger surface of contact but also clamping force is tighter and safer.

SAFETY INSTRUCTIONS

The Aardwolf Slab Lifter 75A combines friction and force on the load being lifted and therefore, will safely hoist slabs within the grip range of up to 75mm, for example 3 x 20mm thick slabs, and within the working load limit of 1200 kg (2,646 lb).

1. Carefully consider all safety regulations and existing standards and codes in your country for hoisting operations.
2. Permission to work with the Slab Lifter should only be given to people who are suitably trained, competent and acquainted with this operating manual and safety regulations.
3. Inspect clamp. If the clamp is worn or damaged, do not use it.
4. Select the proper size clamp for the job. Determine the weight of the slab to be lifted. Do not exceed the working load limit shown on the clamp. Slab thickness must be within the grip range specified by the manufacturer.
5. Do a risk assessment of the material that is being lifted. The slab must be free of fractures and other defects that may cause the slab to fall apart while being lifted.



SAFETY INSTRUCTIONS

6. All personnel must stand clear of the load while it is being lifted or moved.
7. The grip depends on friction. Check that the rubber pads are free to form dirt, grease and other substances that may reduce their effectiveness.
8. Do not lift wet slabs. The grip depends on friction. Lifting wet slabs may cause the rubber pads to lose their grip.
9. The Aardwolf Slab Lifter AL75A combines friction and force on the load being lifted and therefore, will safely hoist up to 3 x 20mm thick stone slabs together.

NOTE: No other secondary securing, lifting, fastening or strapping components, or ancillary materials, are required to be used in conjunction with the AL75A clamp to safely lift 3 slabs within the grip range, the clamp acts independent of any other accessory and is a key advantage for efficient and safe movement of slabs.

Multiple Slab Lifting:

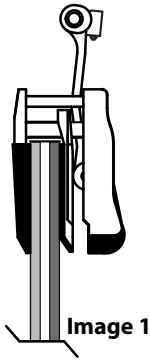


Image 1

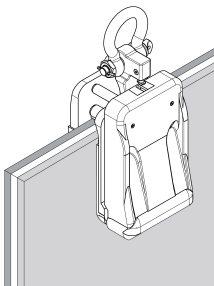


Image 2

- If the slabs have a single polished surface, then the polished surfaces must face each other during the clamping and lifting process.
- The slabs must be the same height and width and aligned to the side and top edges of the slabs to ensure the slabs are lifted uniformly.
(See image 2).
- There must be NO loose materials, foreign objects, or rubbish between the slabs preventing the slabs from being firmly and evenly brought together within the clamp.
- The combined weight of the slabs being lifted must not exceed the AL75A working load limit of 1200 kg (2,646 lb).

10. Position the clamp so that it is square with the slab to be lifted, and in the center of the slab so that the load is balanced.
11. Make sure that the slab is inserted to the full depth into the opening of the clamp.
12. Take up slack slowly. A trial tensioning of the load will usually indicate proper balance.
13. Do not lower the clamp onto other slabs or material while lowering the slab into racks, as the clamp will release its load. Important! In order to protect people from getting injured it is important to follow some general safety directions while using hoisting accessories.
14. Read the operation manual carefully before you use hoisting accessories.
15. Make sure that the operation manual is always available at the place where the hoisting accessories are used.



SAFETY INSTRUCTIONS

16. Give permission to work with hoisting accessories only to people who are suitably trained and competent.
17. Wear safety equipment, like the helmet, gloves and safety boots.
18. Never leave a lifted load unsupervised.
19. Lift a load only as much as is really necessary.
20. Do not get underneath the load and do not permit others to do so.
21. Connections or individual parts of hoisting accessories should never be able to loosen by themselves.
22. Hoisting accessories must be stored in a place where they are protected against weather conditions and aggressive substances.
23. Defect hoisting accessories are no longer to be used.
24. Repairs and checks are to be made only by qualified people.

INSTRUCTIONS FOR USE

Along with the additional instructions listed in the section **“Multiple Slab Lifting”**, these steps must be followed by the operator on all occasions:

1. Operating personnel must stand so that they always have a full view of raising/lowering movements of the lifting equipment and its load.
2. Move the top of the slab out from the pack of slabs by using a pinch bar and wedge, allowing enough room for the backplate of the clamp to pass between slab and pack of slabs. Do not move the top of the slab past center of balance, keep the slab in an inclined position.
3. Position the clamp squarely and in the center of the slab so that the load is balanced.
4. Make sure that the slab is inserted full depth into the opening of the clamp.
5. Release the locking latch so that the jaws will lock onto the slab when the lifting cable is raised.
6. For the Aardwolf Slab Lifter Automatic: Is integrated an auto-lock, unlock Automatic mechanism which allows the clamp to automatically grip the slabs on pick-up and release the slabs on set down easier and safer.
7. Lift the slab slowly to ensure the load is balanced.
8. Warning! Before lowering the load, make sure that there are no obstructions that the load or the clamp could unintentionally rest on. In this event, the clamp can drop the load.

IMPORTANT: Carefully observe the Safety instructions supplied with the lifting clamp.

INSPECTIONS - MAINTENANCE & REPAIR

It is important to establish a regular procedure for clamp inspection. The frequency of inspection will depend upon the amount of use the clamp receives. You may wish to maintain a written record, indicating inspection dates, condition of the clamp on each of those dates and any repairs made. Inspection records should be reviewed periodically. Always use original spare parts when carrying out repairs or maintenance.



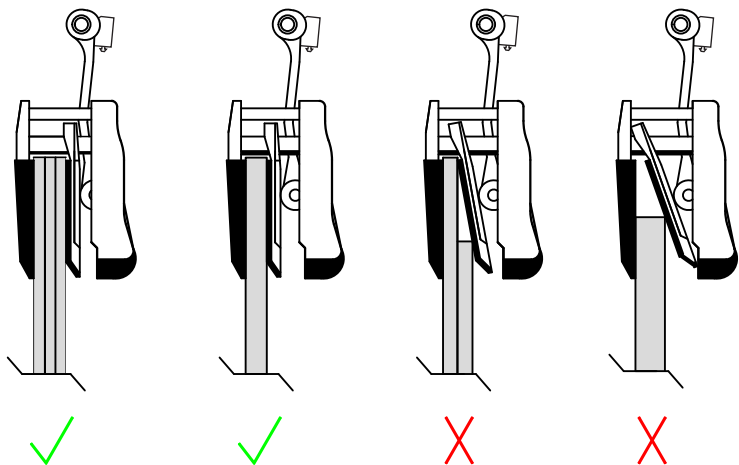
MODEL	GRIP RANGE	W.L.L	NET WEIGHT
AL75A	30 - 75 MM	1200 KG	25 KG

WARRANTY

1. At the time of delivery it is necessary to check that the clamp has not been damaged during shipment. Any claims must be presented within eight days of the date delivery of the product.
2. We grant you 24 months warranty on the Aardwolf Slab Lifter countered from the date of purchase.
3. The warranty coverage is not applicable:
 - The clamp is handled incorrectly during manoeuvring.
 - The operator fails to comply with the instructions in this booklet.
 - The clamp's maximum permissible capacity is exceeded.
 - The specifications for slab thickness are not followed.
 - Damages are due to inadequate maintenance and inspections.
 - Damage is due to improper storage.
 - Repairs were performed by the user without our permission.
 - Non-original spare parts were used.

EXAMPLE

Correct and incorrect method of gripping slabs





USA



AARDWOLF USA

- 📍 19201 S Reyes Avenue, Unit C7
Compton California, 90221
- ☎ (562) 553-6050
- ✉ leo@aardwolfusa.com
- 🌐 www.aardwolfusa.com

INDIA



AARDWOLF NORTH INDIA

- 📍 Harmara Road, Industrial area,
Madanganj, Kishangarh, Rajasthan n
India / Pin no. 305801
- ☎ Tel: +91 93584 48474
- ✉ sales@aardwolf.co.in
- 🌐 Web: www.aardwolf.co.in

AUSTRALIA



AARDWOLF AUSTRALIA

- 📍 1/5 Stanton Road,
Seven Hills NSW 2147
- ☎ +02 9838 8427
- ✉ enquiries@aardwolfaustralia.com
- 🌐 www.aardwolfaustralia.com

INDIA

AARDWOLF SOUTH INDIA

- 📍 # 9/27, Ground Floor, 5th Main Road,
Ganesha Block, Sultanpalya,
RT Nagar Post, Bengaluru-560 032
- ☎ Mob: +91 99017 24600
- ✉ bengaluru@aardwolf.co.in
- 🌐 www.aardwolf.co.in

GERMANY



STONE GLASS EQUIPMENT UG

- 📍 Am Gutstfch 11, 8451 Crimmitschau
Blankenhain, Germany.
- ☎ +49 366 0811 9236
- ✉ sales@aardwolf.com.de
- 🌐 www.aardwolf.com.de

INDIA

AARDWOLF CENTRAL INDIA

- ☎ Mob: 91 97659 06007
- ✉ mumbai@aardwolf.co.in
- 🌐 www.aardwolf.co.in

VIETNAM



AARDWOLF VIETNAM

- 📍 1B, An Phu, Thuan An,
Binh Duong, Vietnam.
- ☎ +84 274 371 2827438/39
- ✉ sales@aardwolf.com.au
- 🌐 www.aardwolf.com.au

