



AARDWOLF SLAB LIFTERS

PATENT

OWNER'S MANUAL

PRODUCT CODE: AL50B

CONTENTS

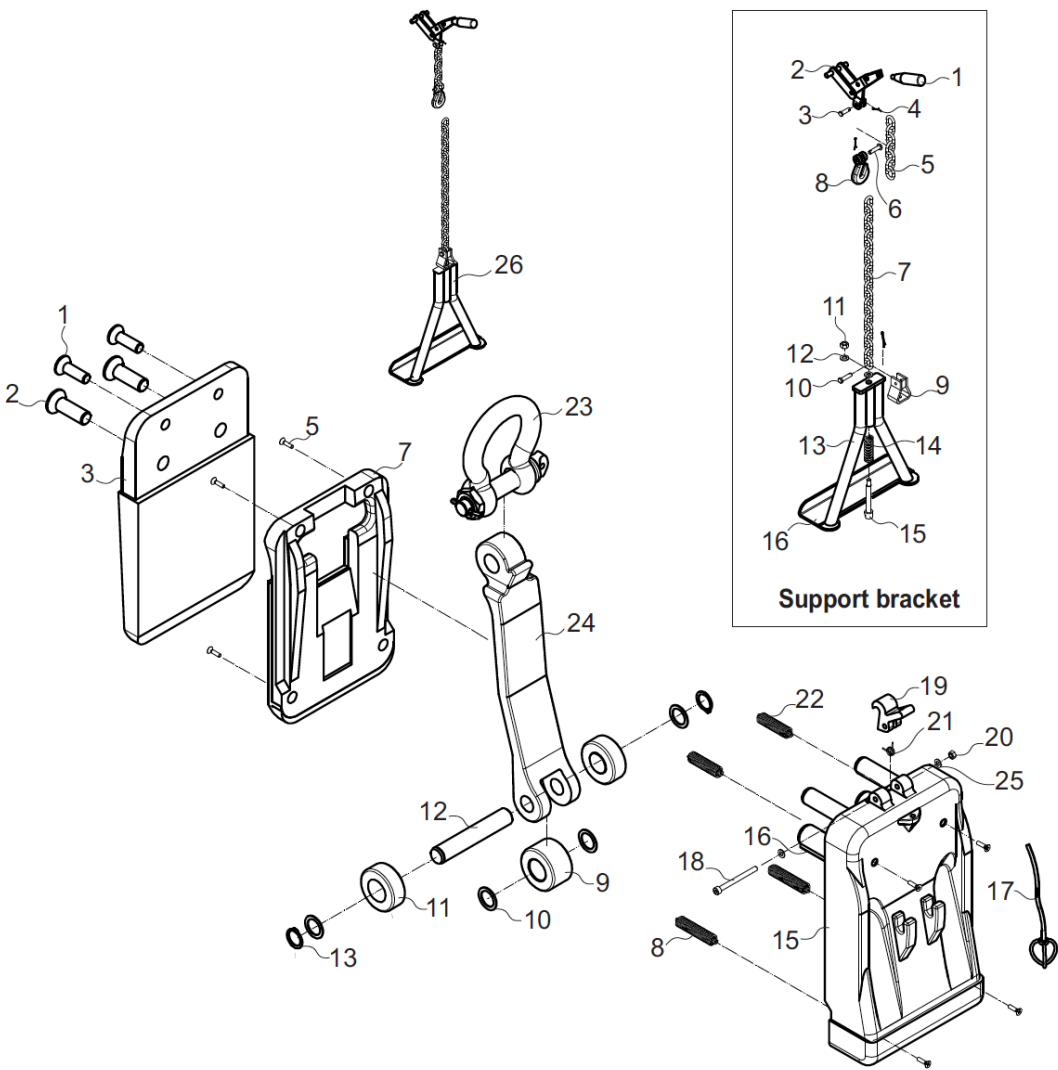
PARTDRAWING • PARTLIST • GENERAL • SAFETY INSTRUCTIONS • INSTRUCTIONS FOR USE
INSPECTIONS, MAINTENANCE & REPAIR • TECHNICAL SPECIFICATION • WARRANTY • EXAMPLE



JUNE. 2020

+84 274 371 2840 | www.aardwolf.com.au | sales@aardwolf.com.au

ASSEMBLY DIAGRAM



POSITION	DESCRIPTION	CODE	QTY
1	Hexagon socket countersunk head screw M12x40	AL50B-001	02
2	Hexagon socket countersunk head screw M16x50	AL50B-002	02
3	Back plate	AL50B-003	01
5	Screw M4x15	AL50B-005	08
7	Center sliding plate	AL50B-007	01
8	Bottom extension spring	AL50B-008	02
9	Inner pressure wheel	AL50B-009	01
10	Brass washer Ø20	AL50B-010	04
11	Outer pressure wheel	AL50B-011	02
12	Shaft	AL50B-012	01
13	Circlip Ø20	AL50B 013	02
15	Camplate	AL50B-015	01
16	Rubber pieces	AL50B-016	02
17	Lanyard	AL50B-017	01
18	Socket head cap screw M5x60	AL50B-018	01
19	Locking latch	AL50B-019	01
20	Nylon nut M5	AL50B-020	01
21	Torsion spring	AL50B-021	01
22	Top extension spring	AL50B-022	02
23	Shackle	AL50B-023	01
24	Lifting pin	AL50B-024	01
25	Washer Ø5	AL50B-025	02
26	Support Bracket	AL50B-026	01

Support bracket

POSITION	DESCRIPTION	CODE	QTY
1	Handle	AL50B-026.1	01
2	Over center level	AL50B-026.2	01
3	Pin 1	AL50B-026.3	01
4	Cotter pin Ø3	AL50B-026.4	03
5	Chain Ø6x100	AL50B-026.5	01
6	Shackle pin	AL50B-026.6	01
7	Chain Ø6x2000	AL50B-026.7	01
8	Shackle	AL50B-026.8	01
9	Hang Pad	AL50B-026.9	01
10	Pin 2	AL50B-026.10	01
11	Nylon Nut M10	AL50B-026.11	01
12	Washer Ø10	AL50B-026.12	02
13	Support bracket	AL50B-026.13	01
14	Compression spring	AL50B-026.14	01
15	Shaft	AL50B-026.15	01
16	Rubber	AL50B-026.16	01

Update: June 4th , 2020



The Slab Lifter is a hoisting accessory for lifting and moving slab form loads with smooth surfaces. It can be used in and outside the factory

PURPOSE OF THIS MANUAL:

The purpose of this manual is to assist the operator in the correct use of the Slab Lifter, to provide information on the safe use of the Slab Lifter and to eliminate any risks that might be caused by the incorrect use of the Slab Lifter. The lifting clamp must be used only for the purpose for which it has been made, namely for lifting and moving slab form loads with smooth surfaces. Any other use is to be considered improper, and consequently, dangerous. The manufacture cannot be held responsible for any damage to people or things by improper, incorrect or unreasonable use of the machine

INTRODUCTION:

The patented Aardwolf Slab Lifter series is the equipment for lifting and moving of slab-form materials with smooth surfaces. Aardwolf Slab Lifter incorporates a spring-loaded latch that automatically releases the lifter from the slab once the slab has been fully lowered to the ground. The operating process becomes simple by one man user's interaction only. And it can be used in and outside the factory. Aardwolf is always upgrading of latest technologies for this product line to make the operating process becomes easily to lift and move of slabs safer and more convenient.

Specially, Aardwolf Slab Lifter Automatic allows the clamp to automatically grip slabs on pick-up and release the slabs on set down by auto-lock and un-lock mechanism. And If you are wondering how to lift and move safely and efficient thin sheets as engineered porcelain, glass and other thin ceramic sheets, Aardwolf Slab Lifter AL30AWJ is the best solution for you. This lifter is not only providing bigger surface of contact, but also clamping force is tighter and safer.

SAFETY INSTRUCTIONS

1. Carefully consider all safety regulations and existing standards and codes in your country for hoisting operations.
2. Permission to work with the Slab Lifter should only be given to people who are suitably trained, competent and acquainted with this operating manual and safety regulations
3. Inspect clamp. If the clamp is worn or damaged, do not use.



4. Select proper size clamp for the job. Determine the weight of the slab to be lifted. Do not exceed W.L.L (Working Load Limit) shown on clamp. Slab thickness must be within grip range specified by the manufacture.
5. Do a risk assessment of the material that is being lifted. The slab must be free of fractures and other defects that may cause the slab to fall apart while being lifted.
6. All personnel must stand clear of the load while it is being lifted or moved.
7. The grip depends on friction. Check that the rubber pads are free from dirt, grease and other substances that may reduce their effectiveness.
8. Do not lift wet slabs. The grip depends on friction. Lifting wet slabs may cause the rubber pads to lose their grip.
9. Loading more than one slab should only be lifted if they are tightly combined into one unit, i.e. multiple sheets are to be consistent in size and thickness, are not projected 35mm in length past each other, and no object are in between sheets.
10. Position the clamp so that it is square with the slab to be lifted, and in the centre of the slab so that the load is balanced.
11. Make sure that slab is inserted to the full depth into the opening of the clamp.
12. Take up slack slowly. A trial tensioning of load will usually indicate proper balance.
13. Do not lower clamp onto other slabs or material while lowering slab into racks, as clamp will release its load. Important! In order to protect people from getting injured it is important to follow some general safety directions while using hoisting accessories.
14. Read the operation manual carefully before you use hoisting accessories.
15. Make sure that the operation manual is always available at the place where the hoisting accessories are used.
16. Give permission to work with hoisting accessories only to people who are suitably trained and competent.
17. Wear safety equipment, like helmet, gloves and safety boots.
18. Never leave a lifted load unsupervised.
19. Lift a load only as much as is really necessary.
20. Do not get underneath the load and do not permit others to do so.
21. Connections or individual parts of hoisting accessories should never be able to loosen by themselves.
22. Hoisting accessories must be stored in a place where they are protected against weather conditions and aggressive substances.
23. Defect hoisting accessories are no longer to be used.
24. Repairs and checks are to be made only by qualified people.



INSTRUCTIONS FOR USE

1. Operating personnel must stand so that they always have a full view of raising/lowering movements of the lifting equipment and its load.
2. Move top of slab out from pack of slabs by means of pinch bar and wedge, allowing enough room for back plate of clamp to pass between slab and pack of slabs. Do not move top of slab pass centre of balance, keep slab in inclined position.
3. Position the clamp squarely and in the centre of the slab so that the load is balanced.
4. Make sure that the slab is inserted full depth into the opening of the clamp.
5. Release the locking latch so that the jaws will lock onto the slab when the lifting cable is raised.
6. For the Aardwolf Slab Lifter Automatic : Is integrated an auto-lock, unlock Automatic mechanism which allows the clamp to automatically grip the slabs on pick-up and release the slabs on set down easier and safer.
7. Lift slab slowly to ensure load is balanced.
8. Warning! Before lowering the load, make sure that there are no obstructions that the load or the clamp could unintentionally rest on. In this event the clamp can drop the load.

IMPORTANT: Carefully observe the Safety instructions supplied with the lifting clamp.

INSPECTIONS - MAINTENANCE& REPAIR

It is important to establish a regular procedure for clamp inspection. Frequency of inspection will depend upon the amount of use the clamp receives. You may wish to maintain a written record, indicating inspection dates, condition of the clamp on each of those dates and any repairs made. Inspection records should be reviewed periodically. Always use original spare parts when carrying out repairs or maintenance.

TECHNICAL SPECIFICATION

MODEL	GRIP RANGE	W.L.L	NET WEIGHT
AL50B	10 - 50 MM	1200 KG	24 KG

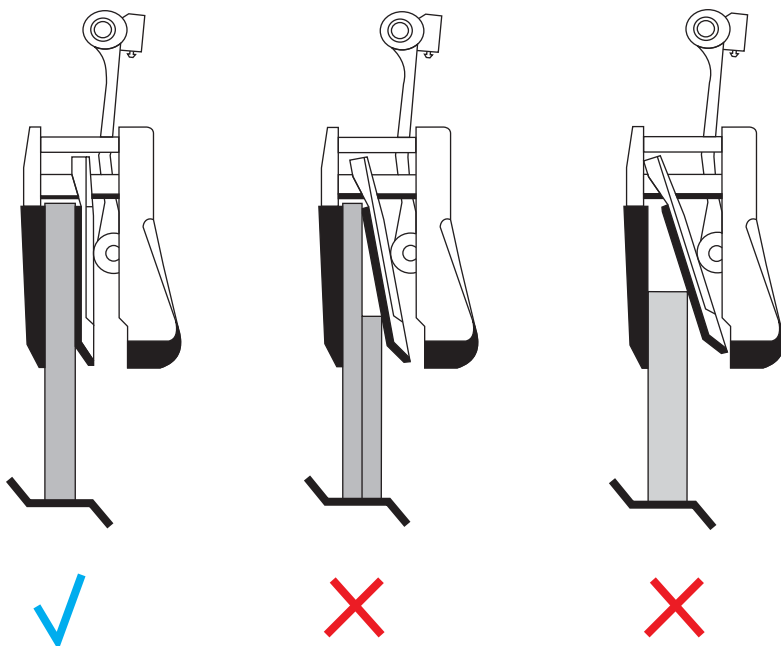


WARRANTY

1. At the time of delivery it is necessary to check that the clamp has not been damaged during shipment. Any claims must be presented within eight days of the date delivery of the product.
2. We grant you 24 months warranty on the Aardwolf Slab Lifter countered from the date of purchase.
3. The warranty coverage is not applicable:
 - Whenever the clamp is handled incorrectly during manoeuvring.
 - Whenever the operator fails to comply with the instructions in this booklet.
 - Whenever the clamp's maximum permissible capacity is exceeded.
 - Whenever the specifications for slab thickness are not followed.
 - When damages are due to inadequate maintenance and inspections.
 - When damage is due to improper storage.
 - Whenever repairs were performed by the user without our permission.
 - Whenever non-original spare parts were used.

EXAMPLE

CORRECT AND INCORRECT METHOD OF GRIPPING SLABS





VIETNAM

AARDWOLF VIETNAM

- 📍 1B, An Phu, Thuan An, Binh Duong, Vietnam.
- ☎ +84 274 371 2827438/39
- ✉ sales@aardwolf.com.vn
- 🌐 www.aardwolf.com.vn

AUSTRALIA

AARDWOLF AUSTRALIA

- 📍 Unit 1, 5 Stanton Road, Seven Hills NSW 2147 Australia.
- ☎ +0422 916 907
- ✉ enquiries@aardwolfaustralia.com
- 🌐 www.aardwolfaustralia.com

GERMANY

STONE GLASS EQUIPMENT UG

- 📍 Am Gutsteich 11, 08451 Crimmitschau/ Blankenhain, Germany.
- ☎ +49 366 0821 9236
- ✉ sales@aardwolf.com.de
- 🌐 www.aardwolf.com.de

INDIA

AARDWOLF KISHANGARH

- 📍 Harmara Road, Industrial Area, Madanganj, Kishangarh, Rajasthan India / Pin no. 305801
- ☎ Tel: +91 93584 48474
- ✉ sales@aardwolf.co.in
- 🌐 Web: www.aardwolf.co.in

AARDWOLF BENGALURU

- 📍 No: 6, Sharma Complex, 3rd Cross, Ganesha Block, Dinnur Main Road, R. T. Nagar P.O Bengaluru-560032
- ☎ +91 98451 62959/ 91 99017 24600
- ✉ bengaluru@aardwolf.co.in
- 🌐 www.aardwolf.co.in

AARDWOLF MUMBAI

- ☎ +91 97659 06007
- ✉ mumbai@aardwolf.co.in
- 🌐 www.aardwolf.co.in

