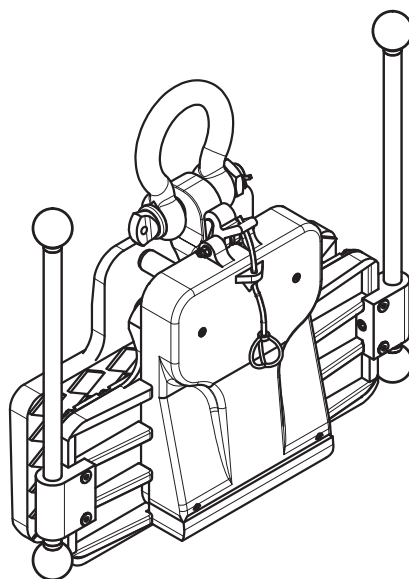




AARDWOLF SLAB LIFTER 20

OWNER'S MANUAL

PRODUCT CODE: AL20



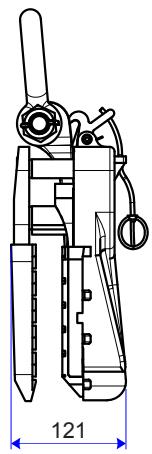
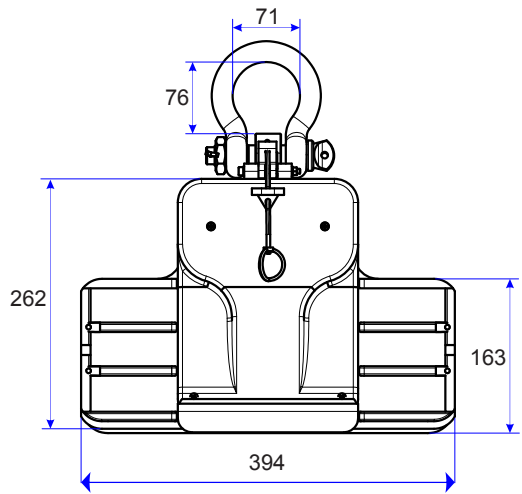
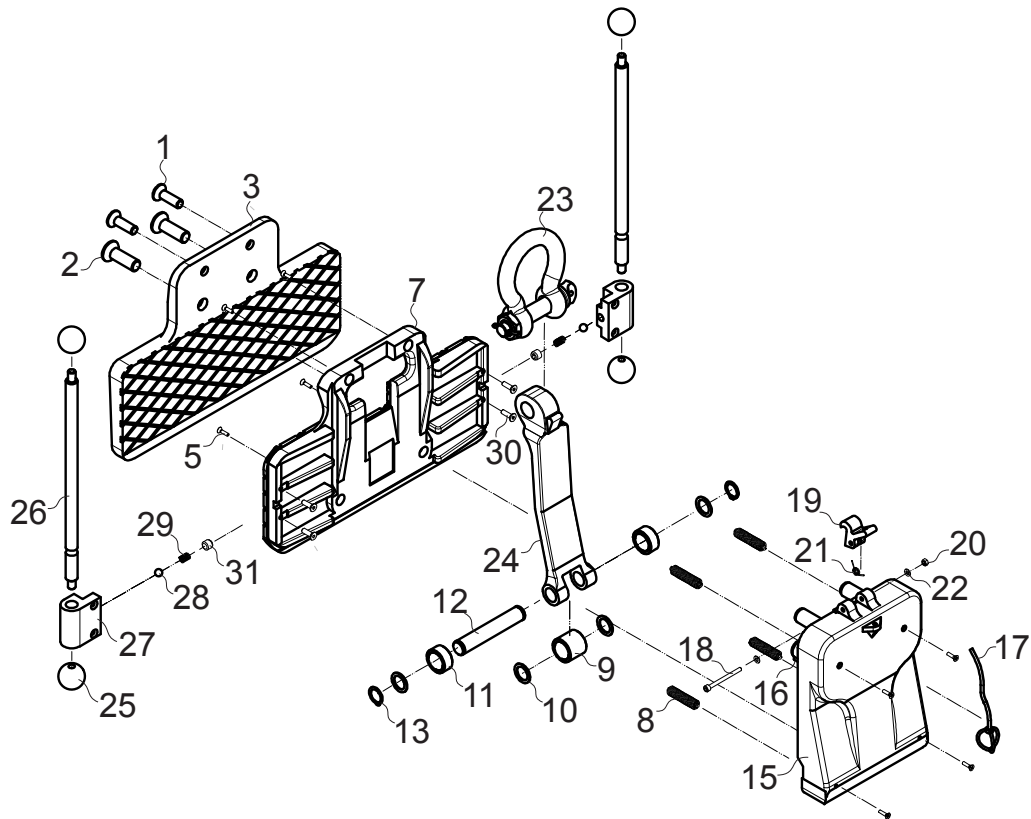
CONTENTS

**PARTDRAWING ► PARTLIST ► GENERAL ► SAFETY INSTRUCTIONS ► INSTRUCTIONS FOR USE
INSPECTIONS, MAINTENANCE & REPAIR ► TECHNICAL SPECIFICATION ► WARRANTY ► EXAMPLE**

A new slab lifting clamp with extra wide jaws and compact nature, which has been specifically designed to meet the needs of businesses handling thin sheets of engineered porcelain, glass and other thin ceramic sheets.



ASSEMBLY DIAGRAM



POSITION	DESCRIPTION	CODE	QTY
1	Hexagon socket countersunk head screw M12x40	AL20-001	02
2	Hexagon socket countersunk head screw M16x50	AL20-002	02
3	Back plate	AL20-003	01
5	Tapping screw M4x15	AL20-005	08
7	Center sliding plate	AL20-007	01
8	Extension spring	AL20-008	04
9	Inner pressure wheel	AL20-009	01
10	Brass washer Ø20	AL20-010	04
11	Outer pressure wheel	AL20-011	02
12	Shaft	AL20-012	01
13	Circlip Ø20	AL20-013	02
15	Camplate	AL20-015	01
16	Rubber pieces	AL20-016	02
17	Lanyard	AL20-017	01
18	Socket head cap screw M5x60	AL20-018	01
19	Locking latch	AL20-019	01
20	Nylon nut M5	AL20-020	01
21	Torsion spring	AL20-021	01
22	Washer Ø5	AL20-022	02
23	Shackle	AL20-023	01
24	Lifting pin	AL20-024	01
25	Plastic handle	AL20-025	04
26	Slide bar	AL20-026	02
27	Handle base	AL20-027	02
28	Steel ball Ø10	AL20-028	02
29	Compression spring	AL20-029	02
30	Hexagon socket countersunk head screw M6x20	AL20-030	04
31	Set screw M12x10	AL20-031	02

Update: June 4th , 2020



Purpose of this Manual:

The purpose of this manual is to assist the operator in the correct use of the Slab Lifter, to provide information on the safe use of the Slab Lifter and to eliminate any risks that might be caused by the incorrect use of the Slab Lifter. The lifting clamp must be used only for the purpose for which it has been made, namely for lifting and moving slab form loads with smooth surfaces. Any other use is to be considered improper, and consequently, dangerous. The manufacture cannot be held responsible for any damage to people or things by improper, incorrect or unreasonable use of the machine.

This user manual should be read, trained, and understood by operators prior to use, and should form part of a broader, safe operating procedure for moving slabs utilising the AL20 clamp using a forklift and/or gantry crane.

Introduction:

The Aardwolf Slab Lifter series is the equipment for lifting and moving of slab-form materials with smooth surfaces. The Aardwolf Slab Lifter incorporates a spring-loaded latch that automatically releases the lifter from the slab once the slab has been fully lowered to the ground. The operating process becomes simple by one man user's interaction only. And it can be used in and outside the factory. Aardwolf is always upgrading of latest technologies for this product line to make the operating process becomes easier to lift and move of slabs safer and more convenient. Specially, the Aardwolf Slab Lifter Automatic allows the clamp to automatically grip slabs on pick-up and release the slabs on set down by auto-lock and un-lock mechanism. And If you are wondering how to lift and move safely and efficient thin sheets as engineered porcelain, glass and other thin ceramic sheets, the Aardwolf Slab Lifter AL30AWJ is the best solution for you. This lifter is not only providing a bigger surface of contact but also clamping force is tighter and safer.

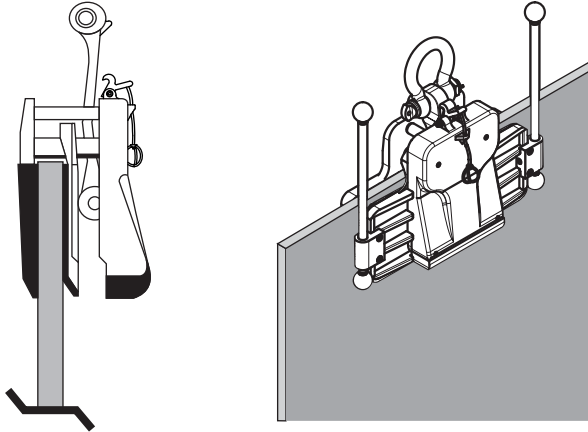
SAFETY INSTRUCTIONS

1. Carefully consider all safety regulations and existing standards and codes in your country for hoisting operations.
2. Permission to work with the Slab Lifter should only be given to people who are suitably trained, competent and acquainted with this operating manual and safety regulations.
3. Inspect clamp. If the clamp is worn or damaged, do not use it.
4. Select the proper size clamp for the job. Determine the weight of the slab to be lifted. Donot exceed the working load limit shown on the clamp. Slab thickness must be within the grip range specified by the manufacturer.
5. Do a risk assessment of the material that is being lifted. The slab must be free of fractures and other defects that may cause the slab to fall apart while being lifted.



SAFETY INSTRUCTIONS

6. All personnel must stand clear of the load while it is being lifted or moved.
7. The grip depends on friction. Check that the rubber pads are free from dirt, grease and other substances that may reduce their effectiveness.
8. Do not lift wet slabs. The grip depends on friction. Lifting wet slabs may cause the rubber pads to lose their grip.
9. The lifter only lifts one slab for each shift and it must be tight during the lifting process.



10. Position the clamp so that it is square with the slab to be lifted, and in the center of the slab so that the load is balanced.
11. Make sure that the slab is inserted to the full depth into the opening of the clamp.
12. Take up slack slowly. A trial tensioning of the load will usually indicate proper balance.
13. Do not lower the clamp onto other slabs or material while lowering the slab into racks, as the clamp will release its load. Important! In order to protect people from getting injured it is important to follow some general safety directions while using hoisting accessories.
14. Read the operation manual carefully before you use hoisting accessories.
15. Make sure that the operation manual is always available at the place where the hoisting accessories are used.
16. Give permission to work with hoisting accessories only to people who are suitably trained and competent.
17. Wear safety equipment, like the helmet, gloves and safety boots.
18. Never leave a lifted load unsupervised.
19. Lift a load only as much as is really necessary.
20. Do not get underneath the load and do not permit others to do so.



SAFETY INSTRUCTIONS

21. Connections or individual parts of hoisting accessories should never be able to loosen by themselves.
22. Hoisting accessories must be stored in a place where they are protected against weather conditions and aggressive substances.
23. Defect hoisting accessories are no longer to be used.
24. Repairs and checks are to be made only by qualified people.

INSTRUCTIONS FOR USE

1. Operating personnel must stand so that they always have a full view of raising/lowering movements of the lifting equipment and its load.
2. Move the top of the slab out from the pack of slabs by using a pinch bar and wedge, allowing enough room for the backplate of the clamp to pass between slab and pack of slabs. Do not move the top of the slab pass center of balance, keep the slab in an inclined position.
3. Position the clamp squarely and in the center of the slab so that the load is balanced.
4. Make sure that the slab is inserted full depth into the opening of the clamp.
5. Release the locking latch so that the jaws will lock onto the slab when the lifting cable is raised.
6. For the Aardwolf Slab Lifter Automatic: Is integrated an auto-lock, unlock Automatic mechanism which allows the clamp to automatically grip the slabs on pick-up and release the slabs on set down easier and safer.
7. Lift the slab slowly to ensure the load is balanced.
8. Warning! Before lowering the load, make sure that there are no obstructions that the load or the clamp could unintentionally rest on. In this event, the clamp can drop the load.

IMPORTANT: Carefully observe the Safety instructions supplied with the lifting clamp.

INSPECTIONS - MAINTENANCE & REPAIR

It is important to establish a regular procedure for clamp inspection. The frequency of inspection will depend upon the amount of use the clamp receives. You may wish to maintain a written record, indicating inspection dates, condition of the clamp on each of those dates and any repairs made. Inspection records should be reviewed periodically. Always use original spare parts when carrying out repairs or maintenance.



TECHNICAL SPECIFICATION

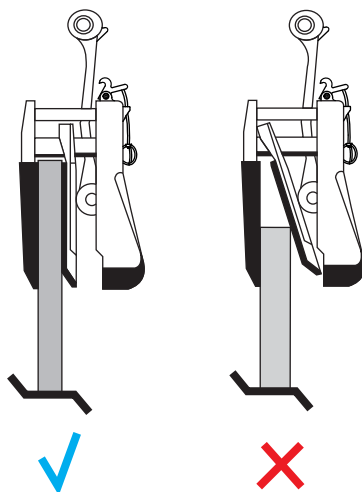
MODEL	GRIP RANGE	W.L.L	NET WEIGHT
AL20	3 - 20 MM	1200 KG	20 KG

WARRANTY

1. At the time of delivery it is necessary to check that the clamp has not been damaged during shipment. Any claims must be presented within eight days of the date delivery of the product.
2. We grant you 24 months warranty on the Aardwolf Slab Lifter countered from the date of purchase.
3. The warranty coverage is not applicable:
 - The clamp is handled incorrectly during manoeuvring.
 - The operator fails to comply with the instructions in this booklet.
 - The clamp's maximum permissible capacity is exceeded.
 - The specifications for slab thickness are not followed.
 - Damages are due to inadequate maintenance and inspections.
 - Damage is due to improper storage.
 - Repairs were performed by the user without our permission.
 - Non-original spare parts were used.

EXAMPLE

Correct and incorrect method of gripping slabs





USA



AARDWOLF USA

- 📍 19201 S Reyes Avenue, Unit C7
Compton California, 90221
- ☎ (562) 553-6050
- ✉ leo@aardwolfusa.com
- 🌐 www.aardwolfusa.com

INDIA



AARDWOLF NORTH INDIA

- 📍 Harmara Road, Industrial area,
Madanganj, Kishangarh, Rajasthan n
India / Pin no. 305801
- ☎ Tel: +91 93584 48474
- ✉ sales@aardwolf.co.in
- 🌐 Web: www.aardwolf.co.in

AUSTRALIA



AARDWOLF AUSTRALIA

- 📍 1/5 Stanton Road,
Seven Hills NSW 2147
- ☎ +02 9838 8427
- ✉ enquiries@aardwolfaustralia.com
- 🌐 www.aardwolfaustralia.com

INDIA

AARDWOLF SOUTH INDIA

- 📍 # 9/27, Ground Floor, 5th Main Road,
Ganesha Block, Sultanpalya,
RT Nagar Post, Bengaluru-560 032
- ☎ Mob: +91 99017 24600
- ✉ bengaluru@aardwolf.co.in
- 🌐 www.aardwolf.co.in

GERMANY



STONE GLASS EQUIPMENT UG

- 📍 Am Gutstfch 11, 8451 Crimmitschau
Blankenhain, Germany.
- ☎ +49 366 0811 9236
- ✉ sales@aardwolf.com.de
- 🌐 www.aardwolf.com.de

INDIA

AARDWOLF CENTRAL INDIA

- ☎ Mob: 91 97659 06007
- ✉ mumbai@aardwolf.co.in
- 🌐 www.aardwolf.co.in

VIETNAM



AARDWOLF VIETNAM

- 📍 1B, An Phu, Thuan An,
Binh Duong, Vietnam.
- ☎ +84 274 371 2827438/39
- ✉ sales@aardwolf.com.au
- 🌐 www.aardwolf.com.au

