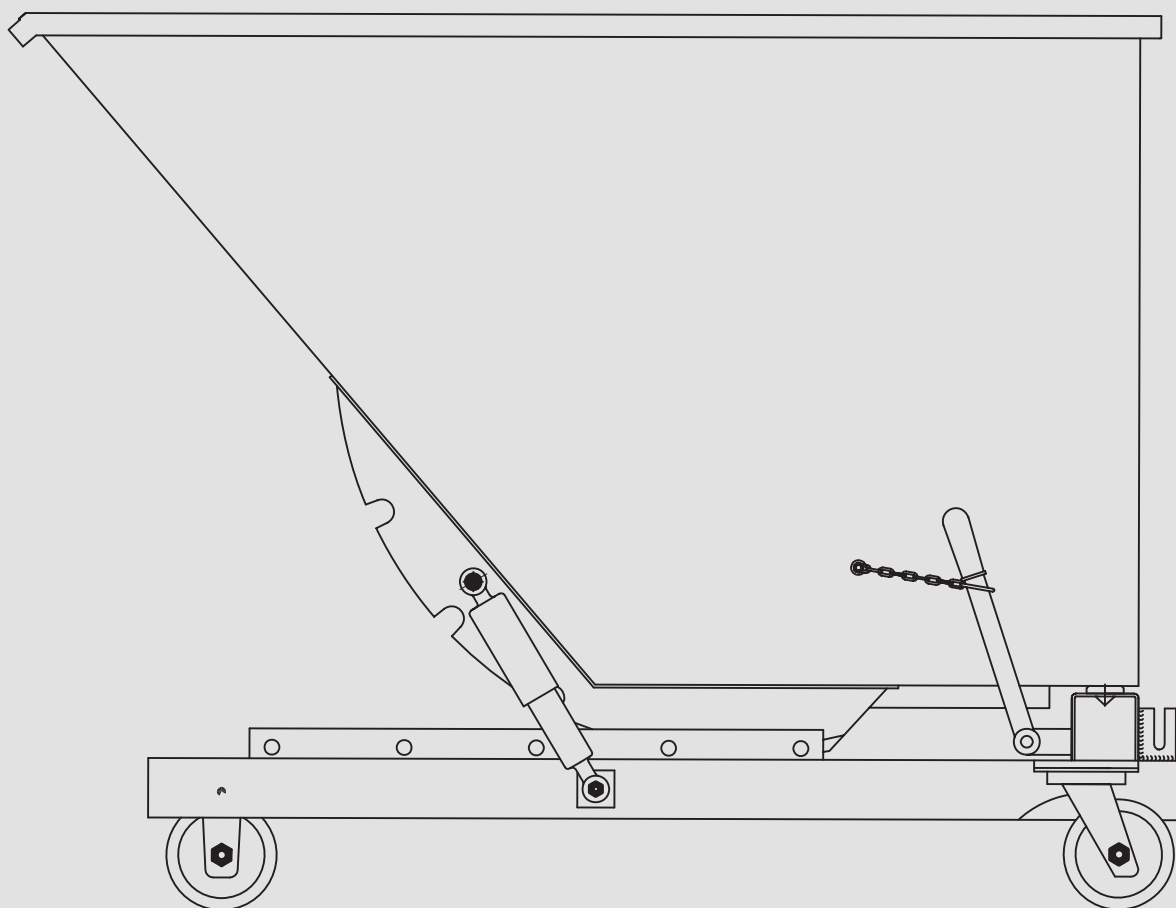


WASTE BIN

WB1000PC



CREATED BY

AARDWOLF INDUSTRIES
Marketing Department

Published on:
September 2024

Contact us:  info@aardwolf.com.au
 www.aardwolf.com.au



Dear Customer,

Thank you for choosing the **Waste Bin - WB1000PC**.

Please read the manual carefully before use. If you have any questions, require spare parts, or need to report any issues, please contact the Aardwolf distributor at your location, provide the product code and serial number, and send them to info@aardwolf.com.au for assistance.

We hope the product meets your needs and exceeds your expectations.

Best regards,

Aardwolf Industries



info@aardwolf.com.au



www.aardwolf.com.au

01 OVERVIEW



INTRODUCTION

The Waste Bin - WB1000PC is a robust, heavy-duty waste bin constructed from 3mm yellow powder coated steel. It is designed for industrial and construction environments, offering long-term durability and resistance to harsh conditions.

This waste bin is ideal for managing large volumes of waste, including industrial debris, metals, and other heavy materials. It is compatible with forklifts for easy transport and is designed to optimize waste sorting and handling.

Key features

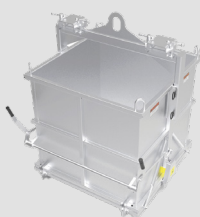
- Made from 3mm steel plate.
- Fitted with 2 rigid wheels and 2 swivel wheels.
- Automatic and manual tipping options for easy emptying.
- Fitted with reinforced forklift pockets, air shocks and safety chain.
- Capable of handling loads up to 1000 kg.
- Protective powder coating, color yellow.
- Suitable for various industrial waste materials, including metals, debris, and heavy waste.



WB1000PC

RELATED PRODUCTS

More waste bin solutions for diverse needs:



ADBB-2000



WB620PC

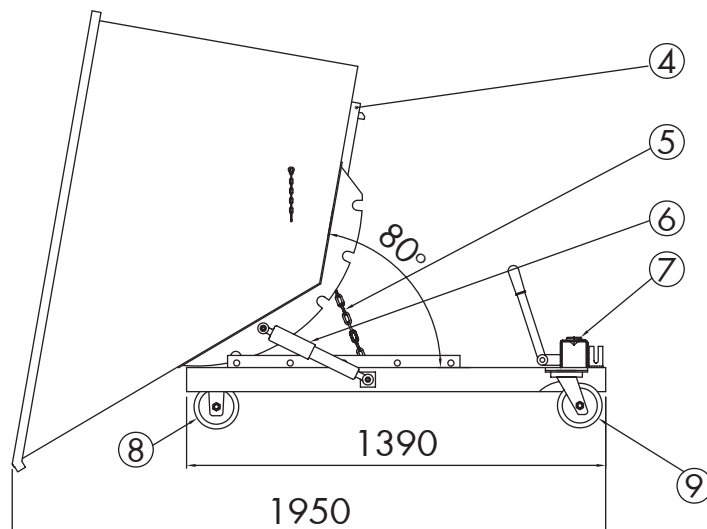
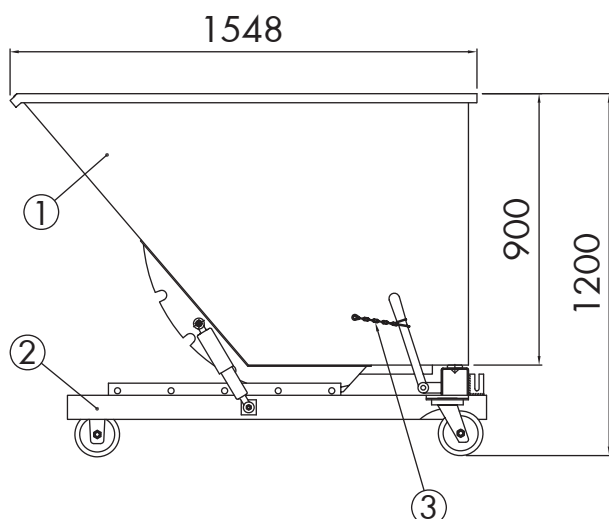


WB1000G



TECHNICAL DATA

DIMENSIONS AND DRAWING - WB1000PC



PARTS LIST - WB1000PC

POS.	DESCRIPTION	Q'TY
1	Bin	1
2	Base	1
3	Safety chain	1
4	Reinforced bottom	1
5	Chain (keeping pin)	2

POS.	DESCRIPTION	Q'TY
6	Air shocks	2
7	Rubbers (against impulse)	4
8	Rigid wheels	2
9	Swivel wheels	2

SPECIFICATIONS

WB1000PC	METRIC	IMPERIAL
Net weight	221 kg	487 lb
Gross weight	222 kg	489 lb
Packaging dimensions	1540 x 1200 x 1220 mm	60.6 x 47.2 x 48 in

02 SAFETY INSTRUCTIONS



BASIC SAFETY

- ↘ **Site-Specific Risk Assessment**
Conduct a thorough risk assessment and lift plan tailored to site conditions.
- ↘ **PPE**
Ensure personnel wear appropriate PPE, including gloves, hard hats, safety glasses, and steel-toed boots.
- ↘ **Load Stability**
Keep the bin level, evenly distribute and restrain the load.
- ↘ **W.L.L. Compliance:**
Do not exceed the bin's W.L.L.
- ↘ **Proximity to Hazards**
Avoid overhead power lines and confined spaces.
- ↘ **Training**
Operators must be competent and trained.
- ↘ **Clear Area**
Ensure the work area is clear of obstacles and personnel before operating.
- ↘ **Crush Risk**
Keep hands and feet away from moving parts.



WARNING

Always

Read the instructions thoroughly before use.

Secure, stabilize, and balance the load before lifting.

Clear the working area and landing zone before lowering.

Factor in the Bin's weight and attachments when calculating the load and move slowly to avoid instability.

Protect bystanders and prevent public access to the working area.

Never

Use the Bin near overhead power lines, confined spaces, or manually lift over 25kg without assistance.

Drag or swing the bin, it's designed for vertical lifting only.

Wear loose clothing or jewelry; tie back long hair to avoid entanglement.

Operate the equipment if you are tired, unwell, or under the influence of alcohol, drugs, or medication.

Use the Bin to store water, chemicals, or explosives.

03 USER INSTRUCTIONS

1 Loading

Lower and lock the bin before loading, ensuring the load fits within the bin's walls.

2 Forklift Setup

Set forks to the correct width, align, and fully insert into the pockets.

3 Securing

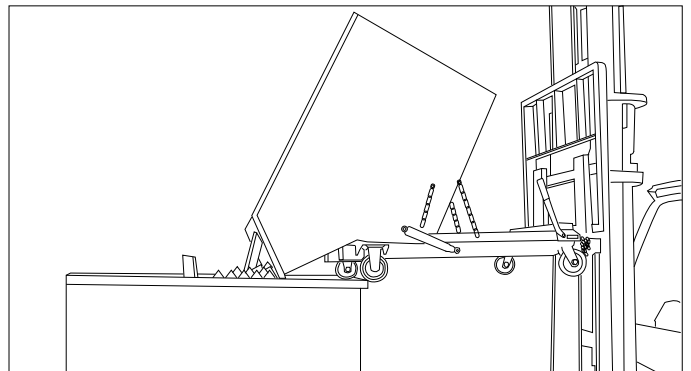
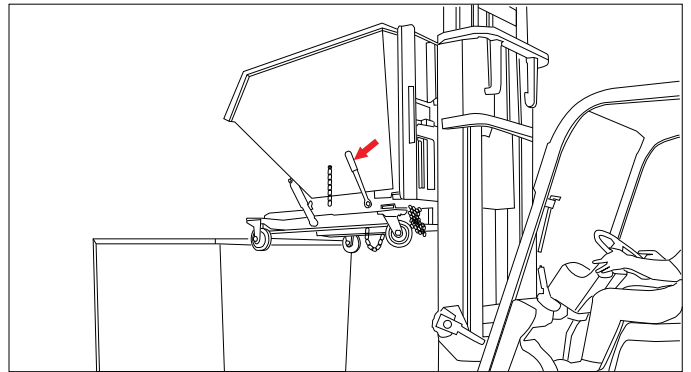
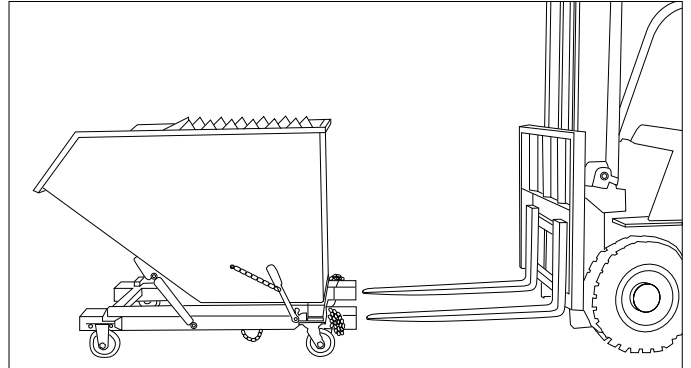
Turn off the engine, apply brakes, insert heel pins, and secure with a safety chain.

4 Operating

Clear the area, raise the bin slightly, and travel to the discharge area.

5 Tipping

Activate the release lever to tip the bin, then check it returns properly before disengaging.



04 MAINTENANCE

- Regular inspections by a qualified engineer are mandatory, recommended every six months.
- Ensure proper use of detachable lifting gear following relevant guidelines.
- Store the unit in a clean, upright position in a secure area to prevent unauthorized use.
- Inspect the equipment before each use and regularly as part of your risk assessment. Do not use the equipment if there are any concerns regarding its condition or safety.

05 WARRANTY



PRODUCT CHECK AND REPORTING

Upon receiving the Bin, the buyer should verify, based on the spare parts list and attached spare drawings, that all spare parts are intact and not lost during shipment. Any damages or losses must be officially reported to Aardwolf Industries within eight days of purchase.



WARRANTY INFORMATION

The Bin comes with a 12-month warranty from the date of purchase, following Aardwolf Industries warranty policy.



WARRANTY EXCLUSIONS

The warranty coverage does not apply if:

- ↘ The Bin is handled incorrectly during maneuvering.
- ↘ The Bin is not installed or maintained according to the provided instructions.
- ↘ The Bin's maximum W.L.L is exceeded.
- ↘ Repairs are performed by the user without permission from Aardwolf Industries.
- ↘ Unofficial spare parts are used.
- ↘ The Bin has been subjected to vandalism or misuse.
- ↘ Damages result from inadequate maintenance and inspections.
- ↘ Damage is due to improper storage.
- ↘ The damage is caused by external factors beyond the manufacturer's control.



DECLARATION OF CONFORMITY

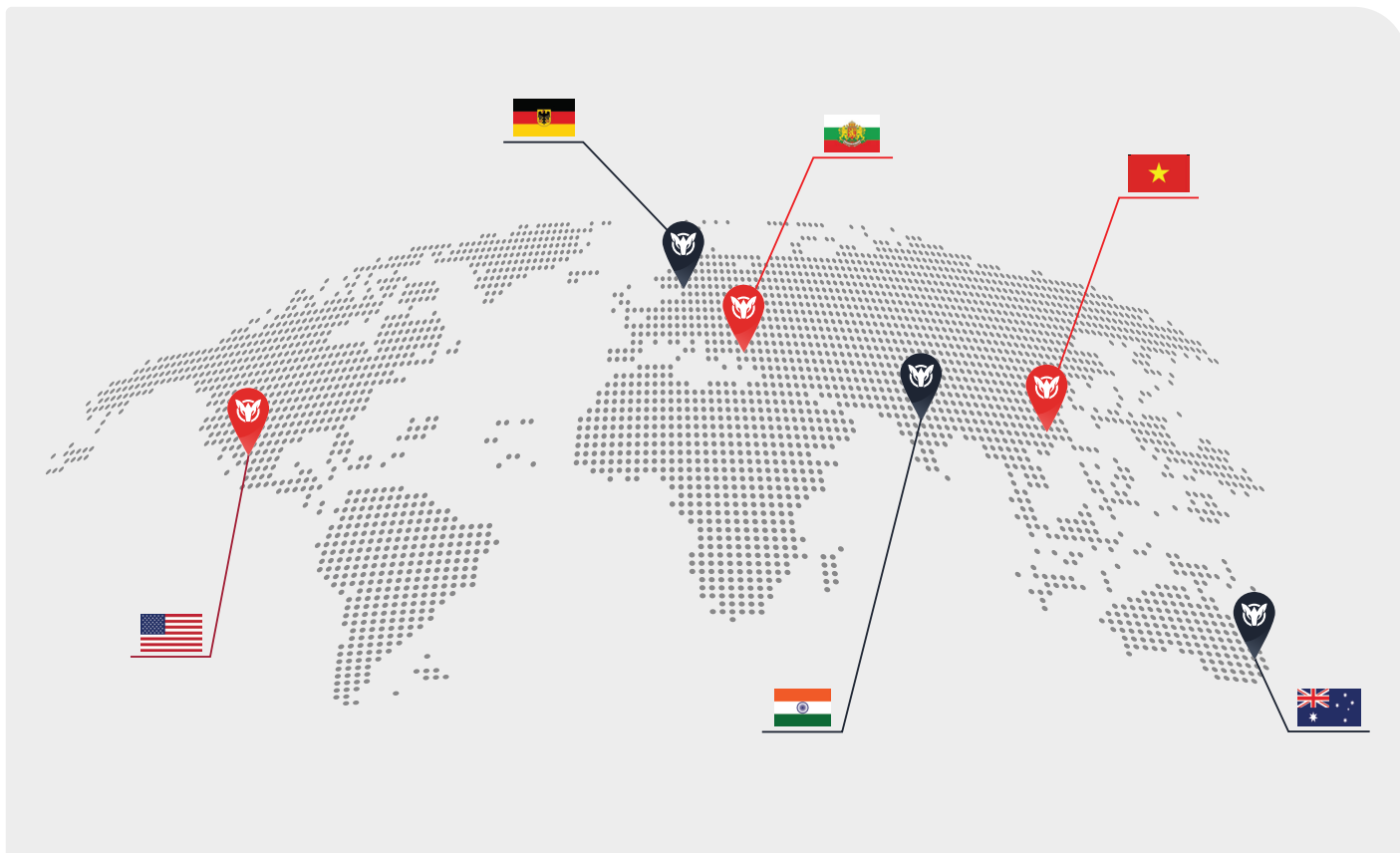
We declare that the Bin conforms to the following standards:

- ↘ The Machinery Directive 2006/42/EC
- ↘ Australian Standard 4991-2004

Note: It is the user's responsibility to comply with state or local laws. The end user is responsible for using the equipment safely, in the manner it is designed for, and within the unit's rated capacity.

WE PROVIDE

Simple, Reliable, Cost Saving And
Awesome Ideas For Your Business



FIND THE NEAREST AARDWOLF SERVICE CENTER

AUSTRALIA

1/5 Stanton Road, Seven Hills NSW 2147
Tel: 02 9838 8427
Email: enquiries@aardwolfaustralia.com
Web: www.aardwolfaustralia.com

BULGARIA

Str.Usta Kolio Ficheto 33
Tel: +359 887 933 754
Email: adrian@toolrange.com

GERMANY

Schulze-Delitzsch-Weg 2, 33175 Bad Lippspringe
Tel: 05252 8382830
Email: sales@toolrange.com.de

INDIA

Harmara Road, Industrial Area, Madanganj, Kishangarh,
District-Ajmer, Rajasthan India 305801
Tel: 02 9838 8427
Email: sales@aardwolf.co.in
Web: www.aardwolf.co.in

USA

9401 Norwalk Blvd, Santa Fe Springs, CA 90670
Tel: (562) 553-6050
Email: sales@aardwolfusa.com
Web: www.aardwolfusa.com

VIETNAM

1B, An Phu, Thuan An City, Binh Duong Province, Vietnam
Tel: +84 931 707 793
Email: info@aardwolf.com.au
Web: www.aardwolf.com.au

