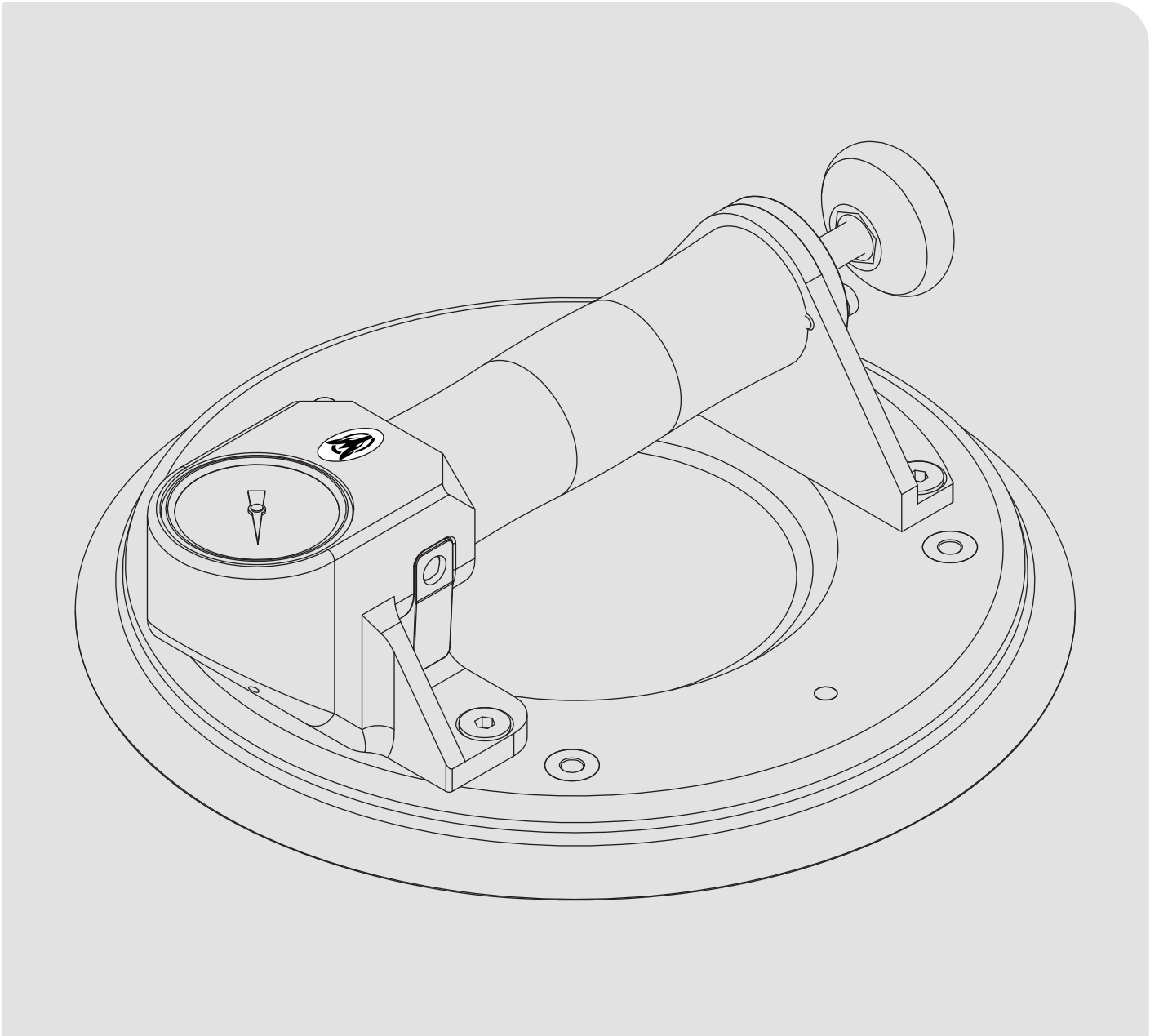


# HAND VACUUM CUP LIFTER

**HVC**



## CREATED BY

**AARDWOLF INDUSTRIES**  
*Marketing Department*

Published on:  
**November 2024**

Contact us:  [info@aardwolf.com.au](mailto:info@aardwolf.com.au)  
 [www.aardwolf.com.au](http://www.aardwolf.com.au)



# INDEX

Page

## 01 OVERVIEW

Introduction	04
Technical data	05

## 02 SAFETY INSTRUCTIONS

General	07
Warnings	07

## 03 USER INSTRUCTIONS

08

## 04 MAINTENANCE

08

## 05 TROUBLESHOOT

09

## 06 WARRANTY

10

## 07 AARDWOLF SERVICES

11

**Dear Customer,**

Thank you for choosing the **Hand Vacuum Cup Lifter – HVC**.

Please read the manual carefully before use and keep it readily accessible beside the Lifter at all times.

If you have any questions, require spare parts, or need to report any issues, please contact the Aardwolf distributor at your location, provide the product code and serial number, and send them to **info@aardwolf.com.au** for assistance.

We hope this advanced tool meets your needs and exceeds your expectations.

Best regards,

**Aardwolf Industries**

 [info@aardwolf.com.au](mailto:info@aardwolf.com.au)

 [www.aardwolf.com.au](http://www.aardwolf.com.au)

# 01 OVERVIEW

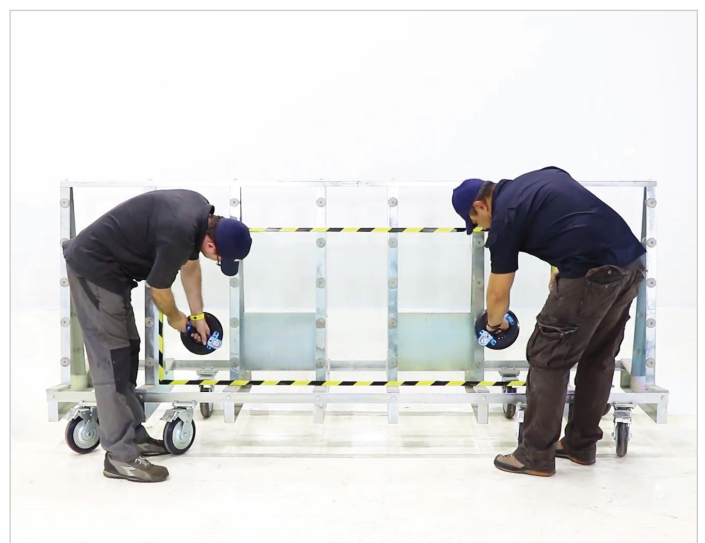


## INTRODUCTION

The Hand Vacuum Cup Lifter – HVC is a rugged and reliable tool crafted from durable aluminum, designed for safe, manual handling of flat, smooth, non-porous materials. Equipped with an ergonomic handle, an integrated vacuum gauge, and a hand-operated priming pump, this lifter provides a strong, secure vacuum in just three strokes. Continuous vacuum pressure can be monitored and adjusted as needed using the pressure gauge, ensuring optimal performance for a variety of lifting tasks.

### Key features

- ✦ **Rust-Resistant**  
Suitable for use in wet environments, ideal for stone-working.
- ✦ **Portable**  
Comes with a protective carrying case for easy storage and transport.
- ✦ **Surface Compatibility**  
Designed specifically for flat, smooth, non-porous surfaces.
- ✦ **Efficient Vacuum Creation**  
Achieves a high vacuum in three strokes, ensuring a firm grip.
- ✦ **Lightweight and Ergonomic**  
Aluminum body with a comfortable handle reduces fatigue.
- ✦ **Integrated Vacuum Gauge**  
Ensures a safe and reliable grip.
- ✦ **Quick Release Lever**  
Facilitates easy release after handling.





## TECHNICAL DATA

### STRUCTURE

#### VACUUM GAUGE

Indicates vacuum level

#### ERGONOMIC DESIGN

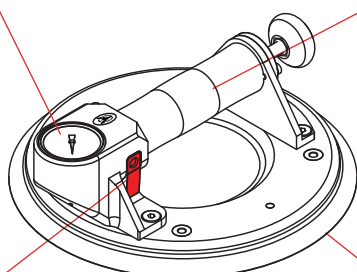
Provides a very comfortable grip while lifting

#### VALVE LEVER

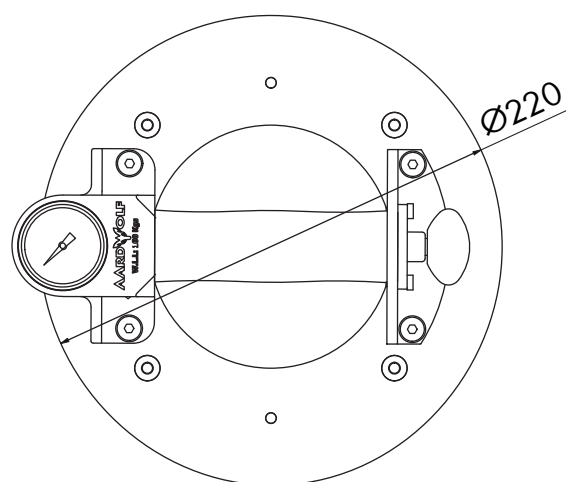
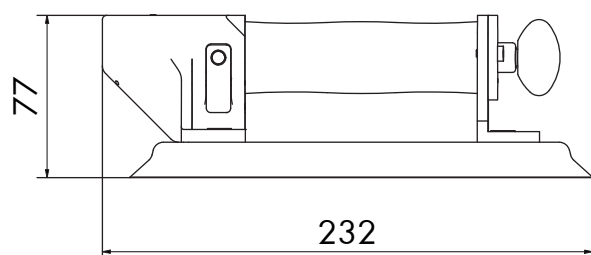
Ensures instant release with no danger of after sticking

#### VACUUM CUP SIZE 220 MM (8.7")

Uses on flat, smooth & air-tight surface only



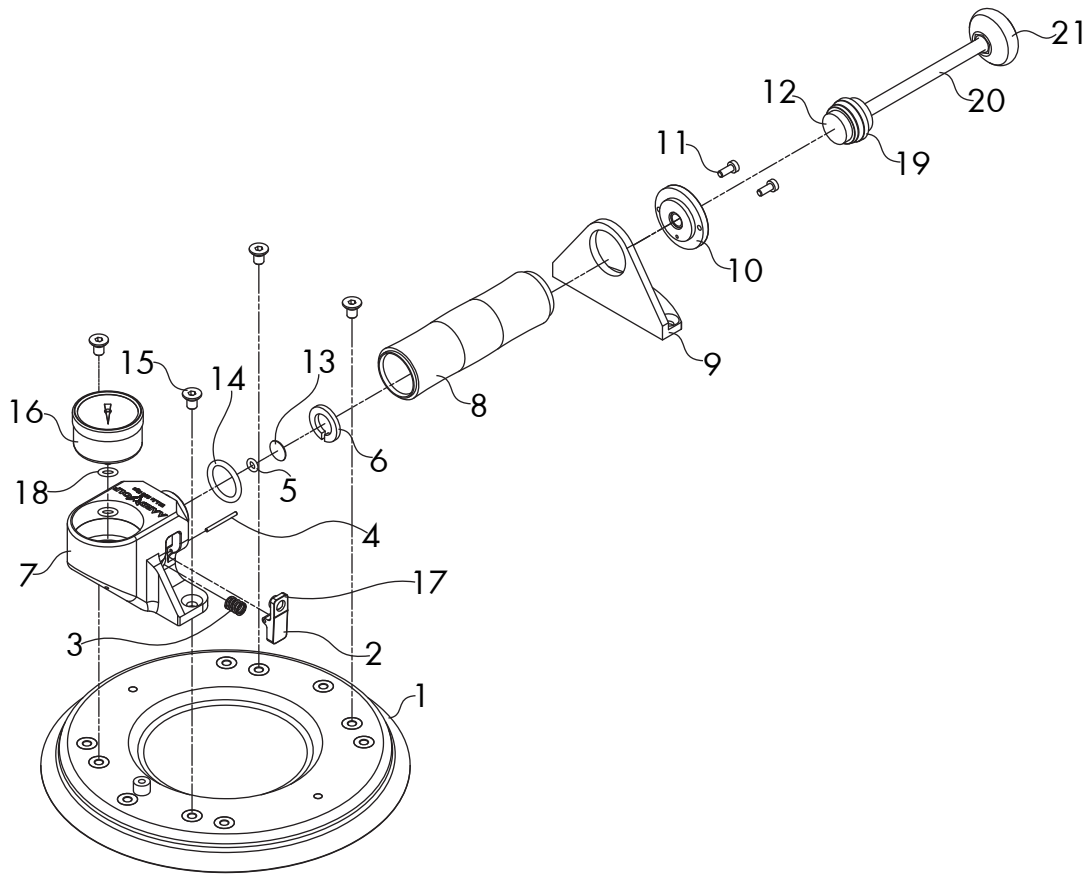
### DIMENSIONS



### SPECIFICATIONS

HVC	METRIC	IMPERIAL
Cup diameter	220 mm	8.7 in
Working load limit	120 kgs	265 lbs
Net weight	1.46 kgs	3.2 lbs
Gross weight	2 kgs	4.4 lbs
Packaging dimensions	270 x 270 x 110 mm	10.6 x 10.6 x 4.3 in

**DRAWING**



**PARTS LIST**

POS.	DESCRIPTION	Q'TY	POS.	DESCRIPTION	Q'TY
1	Vacuum Cup Ø220	1	12	Piston	1
2	Release Lever	1	13	Seal	1
3	Compress Spring	1	14	O-ring D20 x 3	1
4	Pin	1	15	Countersunk Flat Head Screw M6x10	4
5	O-ring	1	16	Vacuum Gauge	1
6	Locking Piece	1	17	Release Lever Seal	1
7	End Pump	1	18	Seal	2
8	Cylinder with Handle	1	19	Air seal	1
9	Right Hanging	1	20	Shaft	1
10	Cap with PB	1	21	Hand Knob	1
11	Hexagon Socket Head Cap Screw M4x10	2			

# 02 SAFETY INSTRUCTIONS



## GENERAL

- ⚠ Carefully read and understand this manual before using the Hand Vacuum Cup Lifter.
- ⚠ Ensure all parts, especially the vacuum pad and bolts, are in good condition before each use.
- ⚠ Regularly inspect the equipment for any damage or wear, especially the vacuum cup and handle.
- ⚠ Only lift materials under the 120 kgs (265 lbs) capacity.
- ⚠ Always use this tool on smooth, flat, dry, clean, and non-porous surfaces.
- ⚠ Use the Lifter only as a hand-lifting tool for short-term handling.



## WARNINGS

### ✓ ALWAYS

**Ensure** the cup and material surfaces are free from dirt, oil, or debris before using.

**Check** that the vacuum gauge needle is in the green range before lifting.

**Store** the tool in a dry, ventilated place, away from high heat and humidity.

**Use** appropriate personal protective equipment (PPE) as necessary.

### ✗ NEVER

**Attempt** to lift a load when the vacuum gauge reads in the red range.

**Use** harsh chemicals like solvents or gasoline to clean the vacuum cup.

**Lifting** any load that exceeds the specified weight capacity of 120 kgs (265 lbs).

**Lift or carry** loads above or over personnel.

**Use** the tool as a suspension tool for hoisting loads or to suspend or secure persons.

**Touch** the vacuum release lever upon lifting load.

**Obstruct** the plunger when in use.

## 03 USER INSTRUCTIONS

### 1 Attaching the Lifter

- Position the vacuum cup securely on the center of the material.
- Pump the plunger with 3 strokes and observe that the needle is in the green zone, indicating a secure attachment.
- Double-check by slightly tugging on the handle to ensure the suction cup is correctly sealed onto the material.

### 2 Lifting and Moving

Carefully lift and move the material, always keeping it centered on the vacuum cup.

### 3 Releasing the Material

- Once the material is positioned, press the release lever to break the vacuum seal.
- Gently remove the Hand Vacuum Cup Lifter from the surface.

## 04 MAINTENANCE

### Regular Inspections

- ✦ Inspect the vacuum cup, handle, and all parts for damage, wear, or dirt before each use.
- ✦ Check that bolts, the vacuum cup, the release lever, and other components are secure.

### Cleaning

- ✦ Clean the vacuum cup and all parts with a soft cloth. Avoid using harsh chemicals, solvents, or lubricants, as they can damage the material.
- ✦ Ensure that all surfaces are free of debris before storing the tool.

### Replacement Parts

- ✦ Replace the vacuum cup if it shows signs of aging, such as cuts, cracks, or loss of suction.
- ✦ Always use original Aardwolf replacement parts for repairs and maintenance.

### Storage

- ✦ Do not lay the Lifter face down on rough or contaminated surfaces, as this can damage the vacuum cup.
- ✦ Store the Lifter in a cool, dry place, away from direct sunlight, high heat, or humidity.
- ✦ Use the protective carrying case provided to prevent damage during storage or transport.

# 05 TROUBLESHOOT

PROBLEM	POSSIBLE CAUSES	SOLUTIONS
Vacuum Cup Fails To Hold	Cuts or rough edges on vacuum cup	Inspect the vacuum cup for cracks, cuts, or wear. Replace it if damaged, and store the Lifter in a clean, dry place when not in use.
	The material surface or the cup might be dirty, oily, or the surface may not be smooth enough.	Clean both the cup and the material surface with a soft cloth. Ensure the surface is smooth, flat, and non-porous.
	Debris in the pump mechanism	Clean pump components and re-lubricate carefully, avoiding any lubricant from dripping onto the vacuum cup.
	Release valve o-ring is leaking	Tighten screws, clean, or replace the o-ring.
Plunger Is Hard To Pump	The plunger mechanism may have dirt buildup or lack proper function.	Clean and re-lubricate pump, ensuring no lubricant drips onto the vacuum cup; replace if damaged.
Constant Pumping Needed	Cuts on cup, debris, or leaking o-ring	Thoroughly clean and re-lubricate, keeping lubricant away from the vacuum cup; replace any damaged parts.

**Note:** For serious issues or additional support, please get in touch with Aardwolf Technician Support at [info@aardwolf.com.au](mailto:info@aardwolf.com.au). Our experts are ready to assist with any complex problems to ensure your equipment operates smoothly.

# 06 WARRANTY



## PRODUCT CHECK AND REPORTING

Upon receiving the Lifter, the buyer should verify, based on the spare parts list and attached spare drawings, that all spare parts are intact and not lost during shipment. Any damages or losses must be officially reported to Aardwolf Industries within eight days of purchase.



## WARRANTY INFORMATION

The Lifter comes with a 12-month warranty from the date of purchase, following Aardwolf Industries' warranty policy.



## WARRANTY EXCLUSIONS

The warranty coverage does not apply if:

- ✘ The user fails to follow the instructions provided in the manual.
- ✘ Damage results from inadequate maintenance or inspections.
- ✘ The maximum working load limit of 120 kgs (265 lbs) is exceeded.
- ✘ Improper storage or usage causes damage.
- ✘ The user makes unauthorized repairs.
- ✘ Non-original or unauthorized spare parts are used.



## DECLARATION OF CONFORMITY

We declare that the Lifter conforms to the following standards:

- ✘ The Machinery Directive 2006/42/EC
- ✘ Australian Standard 4991-2004

**Note:** *It is the user's responsibility to comply with state or local laws. The end user is responsible for using the equipment safely, in the manner it is designed for, and within the unit's rated capacity.*

# 07 AARDWOLF SERVICES



## GLOBAL CONTACT

Our sales network of local field representatives, international subsidiaries and trade partners ensures quick and competent information and consultation in 6 countries worldwide.

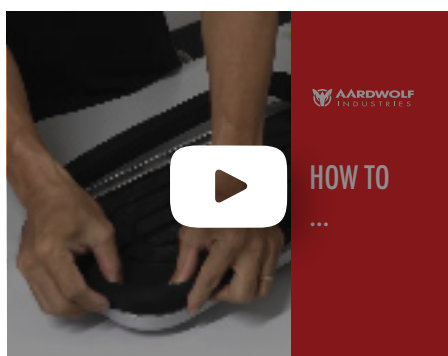
 [www.aardwolf.com.au](http://www.aardwolf.com.au)



## ONLINE DOCUMENTATION


Conveniently download catalogs and get comprehensive information about our products and services.

 [www.aardwolf.com.au/catalog.php](http://www.aardwolf.com.au/catalog.php)



## AARDWOLF PRODUCT VIDEOS

In short, easy-to-understand videos we explain the comprehensive functions offered by our products on our Youtube Channel. Take a look, it's worth it!

 [www.youtube.com/@Aardwolf.Industries](http://www.youtube.com/@Aardwolf.Industries)

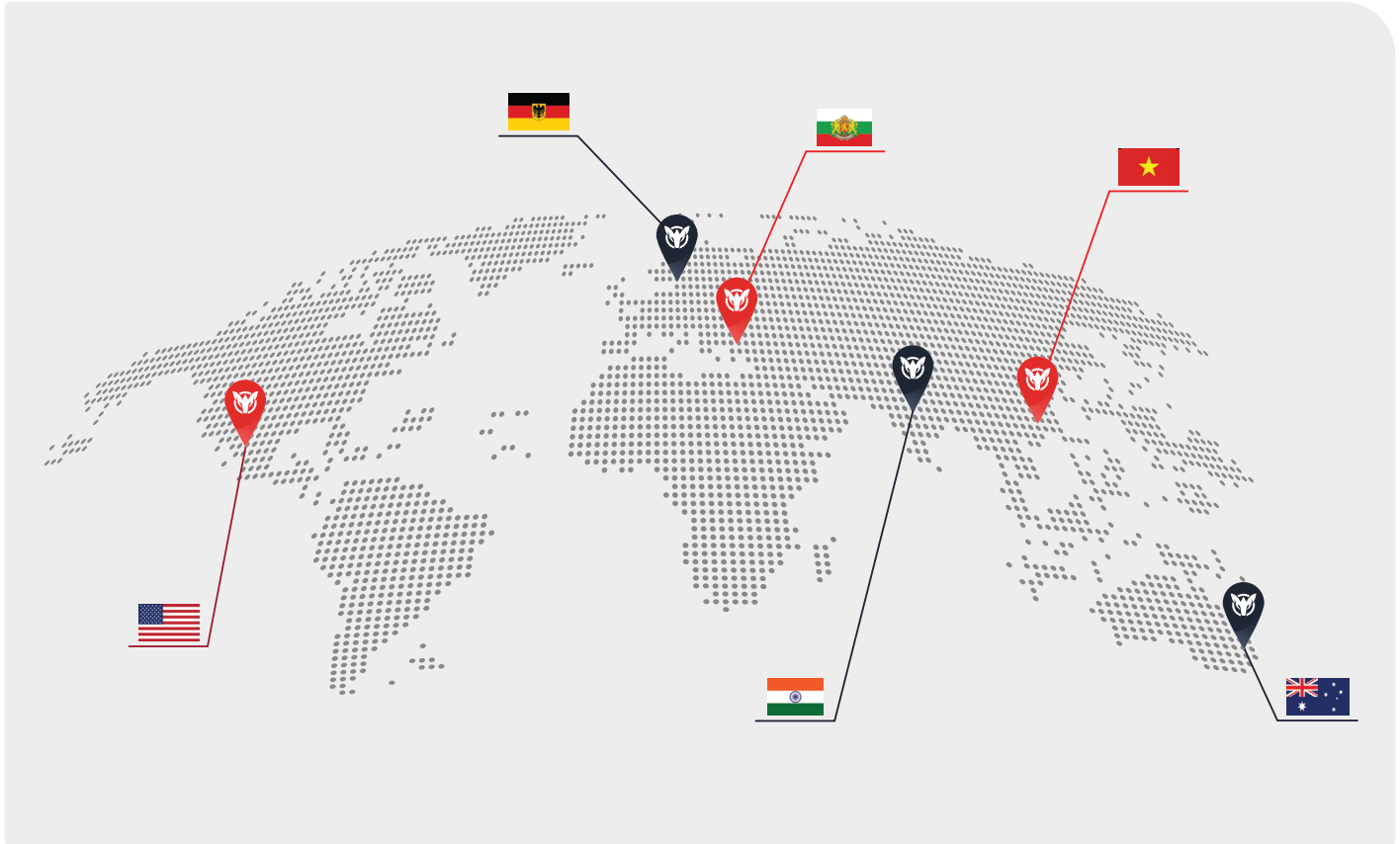


**SCAN HERE**

To visit our Youtube Channel

# WE PROVIDE

Simple, Reliable, Cost Saving And  
Awesome Ideas For Your Business



## FIND THE NEAREST AARDWOLF SERVICE CENTER

### AUSTRALIA

1/5 Stanton Road, Seven Hills NSW 2147  
Tel: 02 9838 8427  
Email: [enquiries@aardwolfaustralia.com](mailto:enquiries@aardwolfaustralia.com)  
Web: [www.aardwolfaustralia.com](http://www.aardwolfaustralia.com)

### BULGARIA

Str.Usta Kolio Ficheto 33  
Tel: +359 887 933 754  
Email: [adrian@toolrange.com](mailto:adrian@toolrange.com)

### GERMANY

Schulze-Delitzsch-Weg 2, 33175 Bad Lippspringe  
Tel: 05252 8382830  
Email: [sales@toolrange.com.de](mailto:sales@toolrange.com.de)

### INDIA

Harmara Road, Industrial Area, Madanganj, Kishangarh,  
District- Ajmer, Rajasthan India 305801  
Tel: +91 73000 68444  
Email: [sales@aardwolf.co.in](mailto:sales@aardwolf.co.in)  
Web: [www.aardwolf.co.in](http://www.aardwolf.co.in)

### USA

9401 Norwalk Blvd, Santa Fe Springs, CA 90670  
Tel: (562) 553-6050  
Email: [sales@aardwolfusa.com](mailto:sales@aardwolfusa.com)  
Web: [www.aardwolfusa.com](http://www.aardwolfusa.com)

### VIETNAM

1B, An Phu, Thuan An City, Binh Duong Province, Vietnam  
Tel: +84 931 707 793  
Email: [info@aardwolf.com.au](mailto:info@aardwolf.com.au)  
Web: [www.aardwolf.com.au](http://www.aardwolf.com.au)

