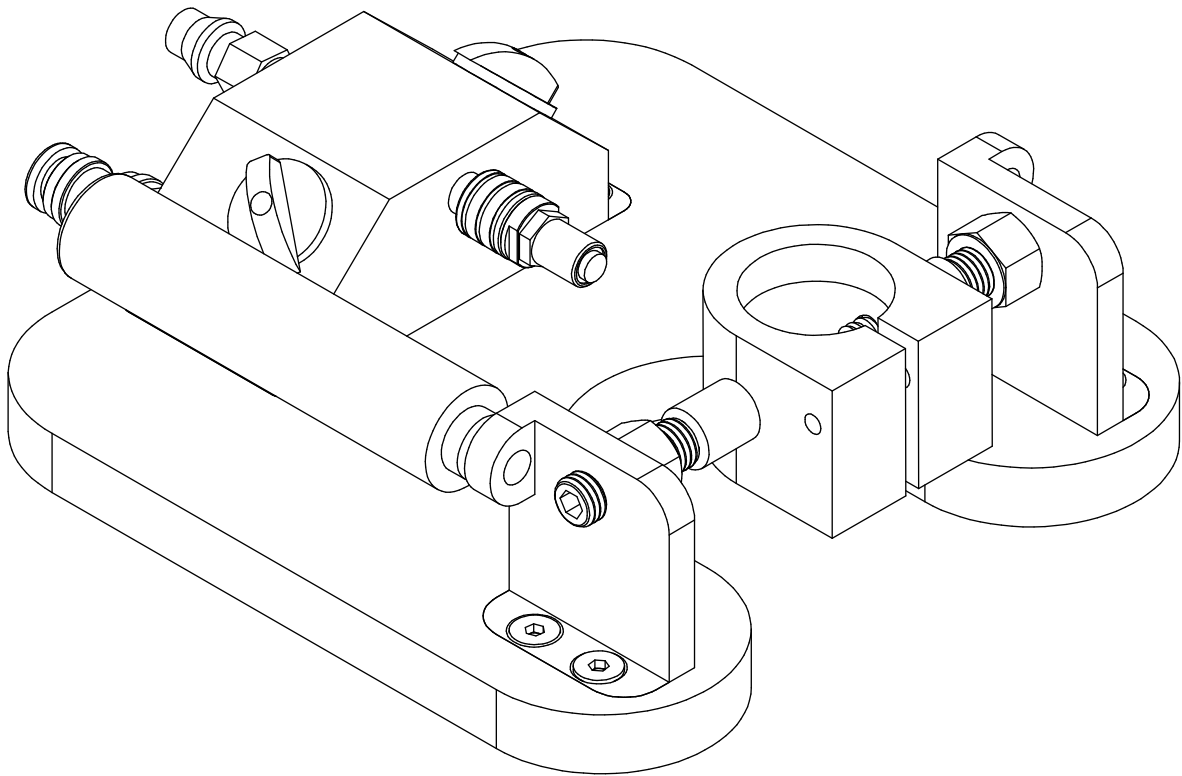


ELECTRIC ANCHOR MACHINE

EAM



CREATED BY

AARDWOLF INDUSTRIES
Marketing Department

Published on:
May 2025

Contact us:  info@aardwolf.com.au
 www.aardwolf.com.au



INDEX

Page

01 OVERVIEW

Introduction	04
Technical data	05

02 SAFETY INSTRUCTIONS

General	08
Warnings	09

03 USER INSTRUCTIONS

Set the vacuum source	09
Operating the machine	10

04 MAINTENANCE

10

05 WARRANTY

11

Dear Customer,

Thank you for choosing the **Electric Anchor Machine – EAM**.

Please read the manual carefully before use and keep it readily accessible beside the equipment at all times.

If you have any questions, require spare parts, or need to report any issues, please contact the Aardwolf distributor at your location, provide the product code and serial number, and send them to **info@aardwolf.com.au** for assistance.

We hope this advanced tool meets your needs and exceeds your expectations.

Best regards,

Aardwolf Industries



info@aardwolf.com.au



www.aardwolf.com.au

01 OVERVIEW



INTRODUCTION

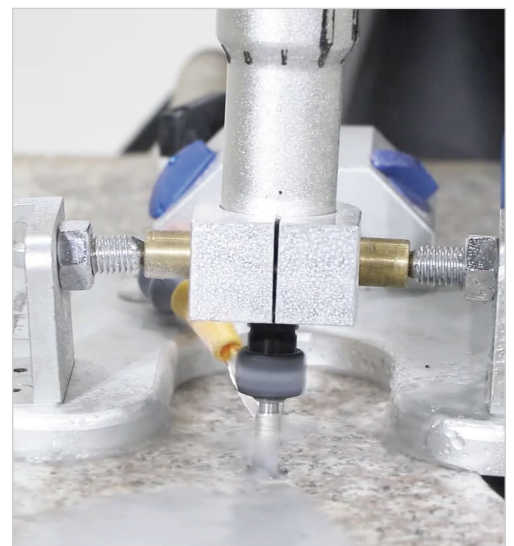
The Aardwolf Electric Anchor Machine (EAM) is a compact, high-precision tool designed for cutting T-slots in stone surfaces such as vanity tops. These slots are used to anchor bolts for under-mount sinks or architectural cladding systems.

The machine features a vacuum base with two independently controlled suction zones, enabling secure grip even on partial surfaces—ideal for edge work. It operates using either a venturi system powered by compressed air or an external vacuum pump, offering flexibility across different job sites.

Supplied with a 750W industrial grinder, the EAM is ready for use and compatible with 6mm (1/4") T-type diamond bits. Lightweight and easy to handle, it delivers accurate, repeatable cuts with minimal setup.

Key features

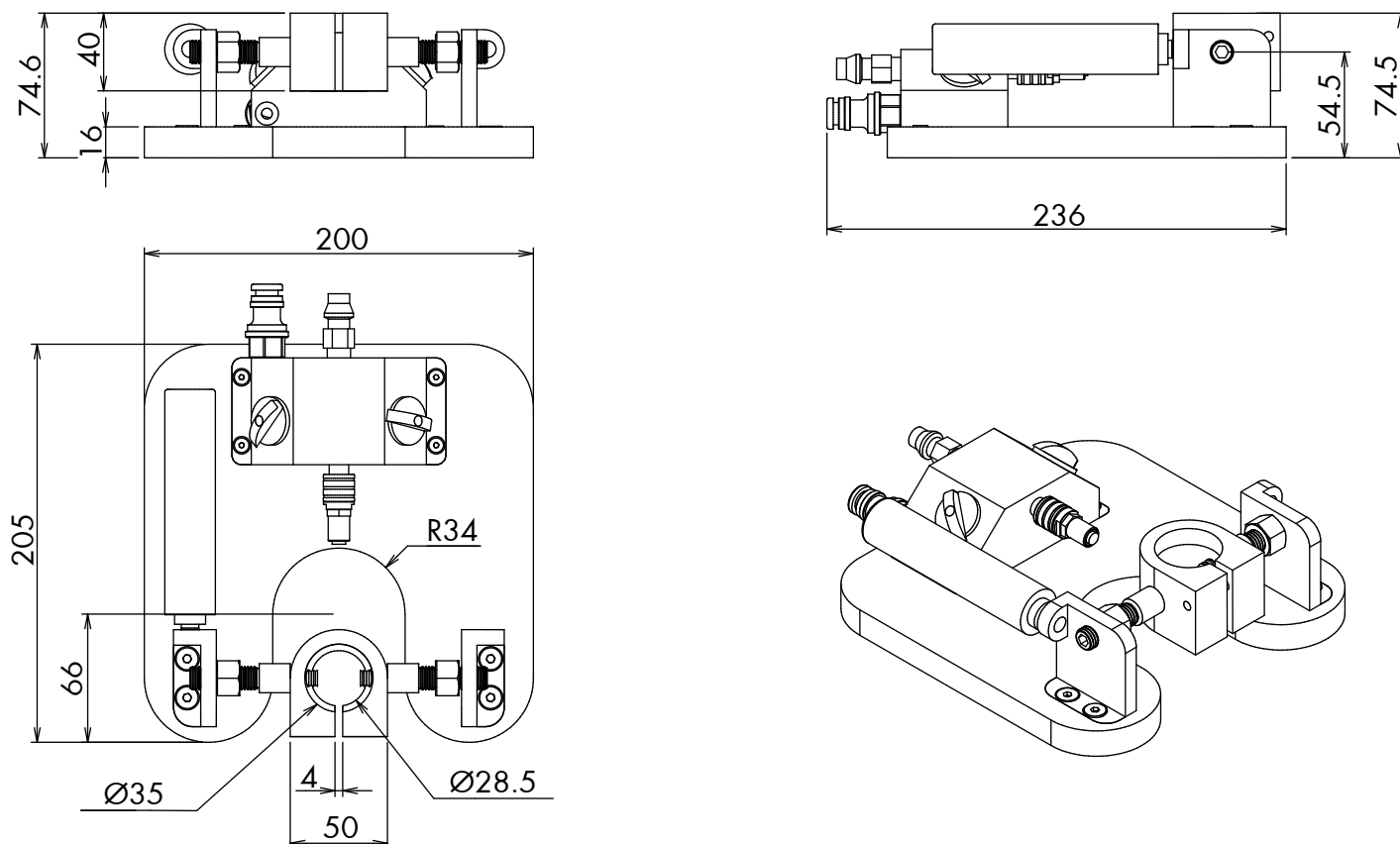
- ✦ **Dual vacuum options:** Use the built-in venturi system (compressed air) or connect to an external vacuum pump using the appropriate interchangeable air fitting (included).
- ✦ **Independent vacuum zones:** Two separate suction areas allow safe edge operations and partial surface grip.
- ✦ **Quick-connect fittings:** Industrial-grade couplers for fast air and water connections.
- ✦ **T-bit compatibility:** Works with T-type diamond bits (6mm / 1/4" shank).
- ✦ **Detachable water hose:** Built-in valve enables controlled water flow for cooling and dust suppression.
- ✦ **Bi-directional cutting:** Allows cutting in both push and pull directions.
- ✦ **Precise alignment:** Built-in indicators ensure accurate positioning.
- ✦ **Durable construction:** Machined, anodized aluminum components.
- ✦ **Secure vacuum seal:** Molded rubber base provides reliable surface grip.





TECHNICAL DATA

DIMENSIONS



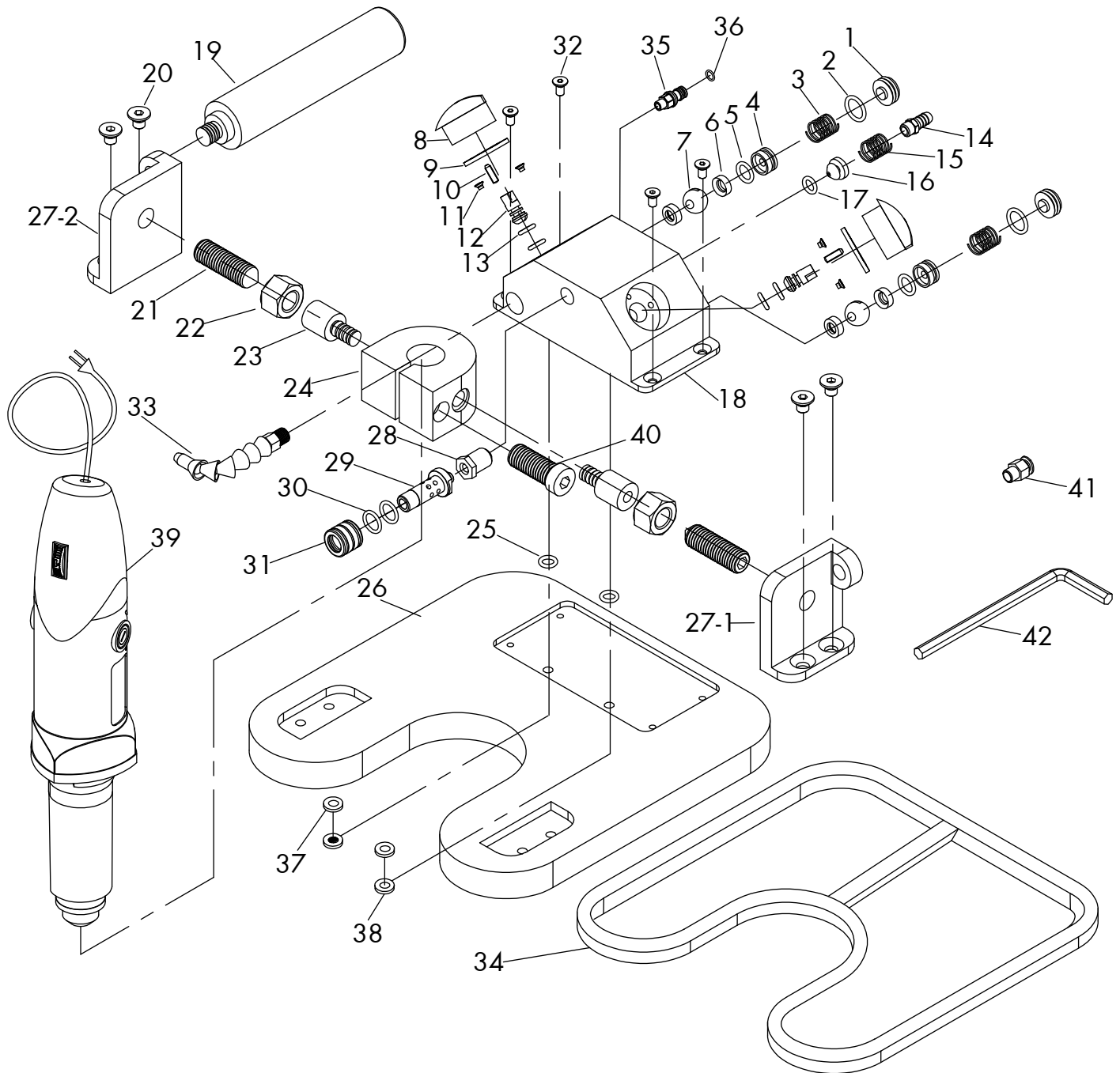
SPECIFICATIONS

EAM	METRIC	IMPERIAL
Net weight	4 kgs	9 lbs
Collet diameter	6 mm	1/4"

NOTE:

- Includes Aardwolf 750W Grinder with 1/4" (6mm) collet.
- Rated voltage: 220V, 50Hz (default); 110V, 60Hz (for U.S market).
- No-load speed: 30,000 RPM.
- Water connection hose thread - 1/4" PT.
- Air connection 1/4" industrial series coupler plug.
- Vacuum base -80 kPa vacuum.

ASSEMBLY DIAGRAM



PARTS LIST

POS.	DESCRIPTION	Q'TY	POS.	DESCRIPTION	Q'TY
1	Nut Cap	2	26	Vacuum Base	1
2	O-ring 12*2.6	2	27-1	Handle Pad Left	1
3	Spring	2	27-2	Handle Pad Right	1
4	Brass Washer	2	28	Silencer	1
5	O-ring 7*1.5	2	29	Valve	1
6	Teflon Washer	4	30	Seal Ø12x2.5	2
7	Ball Ø12	2	31	Slider	1
8	Lock Valve	2	32	Socket Counter Head Screw M4x10	4
9	Brass Plate	2	33	Water Coolant Hose 1/4"	1
10	Pin Cotter Ø2.5*10	2	34	EPDM Round Seal M7x 10	1
11	Socket Counter Head Screw M3x8	4	35	Water Valve 1/4"	1
12	Pin Valve	2	36	Seal Ø16x3	1
13	O-ring Ø4x1.5	4	37	Filter Mesh	2
14	Air Mouse Tail Inox 1/4"	1	38	Plastic Limit	2
15	Spring	1	39	750W-AW Grinder	1
16	Venturi Nozzle	1	40	Hexagon Socket Head Cap Screw M6x40	1
17	O-ring Ø4.47x1.78	1	41	Connectors Male Tube Ø6x1/4"	1
18	Main Valve	1	42	Allen Key 5mm	1
19	Handle	1			
20	Socket Counter Head Screw M6x10	4			
21	Socket Set Screw Cone Point M12x40	2			
22	Nut M12	2			
23	Point Nut M10	2			
24	Rotary Base	1			
25	O-ring Ø6x1.78	2			

02 SAFETY INSTRUCTIONS



GENERAL

✧ Training

The operator must be trained and possess the necessary knowledge, skills, and expertise in all relevant industry and regulatory standards for operating the equipment in their geographical location.

✧ Manual Availability

Ensure the operator's manual is available and understood by all operators.

✧ Wear Protective Gear

Always wear appropriate PPE, including safety goggles, gloves, ear protection, and a dust mask, to protect against flying debris, loud noise, and dust.

✧ Inspect Before Use

Perform a visual inspection of the machine and its components before each use. Check for loose parts, wear, or damage to ensure safe operation.

✧ Secure the Workspace

Ensure the work area is clean, dry, and clutter-free to avoid accidents. Use the machine on a stable surface and keep bystanders safe.

✧ Clean Contact Areas

Ensure the vacuum base surface and seals are clean and free from debris to maintain a secure grip during operation.

✧ Avoid Overheating

Ensure proper cooling by using the water hose to spray the work area as needed. This helps prevent machine and material overheating.

✧ Tool Compatibility

Only use T diamond bits with a 6mm (1/4") shank, as specified. Using improper tools may lead to malfunction or injury.

✧ Vacuum Zones

Operate the independent vacuum zones properly to ensure stable suction. Activate only the required zone when working near edges to maintain balance and safety.

✧ Vacuum Source Switching

Ensure the correct vacuum source—venturi or external pump—is selected by adjusting the Slider and installing the appropriate air fitting: POS 14 for venturi (compressed air), POS 41 for external vacuum pump.



WARNINGS

✓ ALWAYS

- Always confirm full suction, secure contact, and check all connections before powering the grinder.
- Always inspect for damage before each use and replace worn parts immediately to maintain safety.
- Always use compatible tools (T diamond bits, 6mm shank).
- Always select the correct vacuum source and air fitting before operation.

✗ NEVER

- Never operate without PPE (gloves, goggles, ear protection).
- Never use damaged equipment or worn-out components.
- Never modify the machine or use non-original spare parts.

03 USER INSTRUCTIONS



SET THE VACUUM SOURCE

1. Connect Air and Water Supply

- Connect compressed air or an external vacuum pump to the appropriate air fitting.
- Connect the cooling water hose to the Water Valve.

2. Vacuum Source Switching

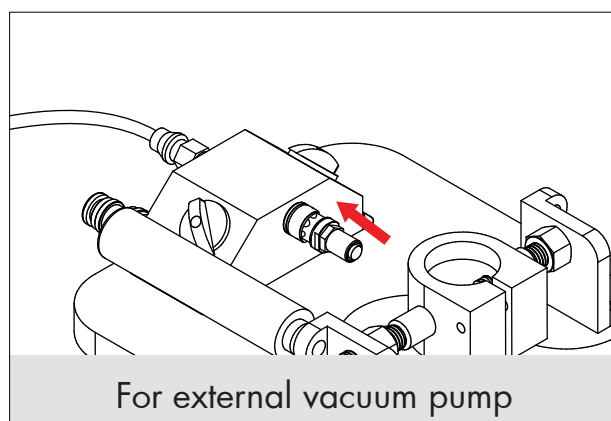
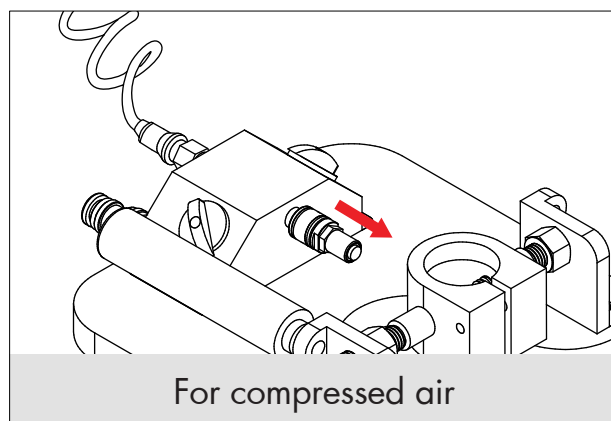
To change between venturi (compressed air) and external vacuum pump:

2.1 Replace the air fitting

- Use POS 14 for venturi (compressed air).
- Use POS 41 for external vacuum pump.

2.2 Adjust the slider (POS 31)

- Move forward for venturi operation.
- Move backward for vacuum pump.





OPERATING THE MACHINE

1. Mark the Cutting Area

Use a marker to mark the precise T-slot positions on the stone surface.

2. Select the Vacuum Zones

Use the two Lock Valves to control the left and right vacuum zones independently.

- Turn valve ON for suction, OFF to release.
- For full-surface grip, activate both zones.
- For edge work, activate only the zone in contact with the surface.

3. Begin Cutting

- Turn on the air supply and start the grinder.
- Guide the machine steadily along the marked cutting lines.
- Use water during cutting to cool the bit and suppress dust.

4. Inspect the Cut

After cutting, check the T-slot for correct depth and alignment. Make any necessary adjustments before turning off vacuum and removing the machine.



Video demonstration

04 MAINTENANCE

Inspect

- Check the machine for wear, loose parts, and damage before and after use.
- Ensure all connections (air, water, and vacuum) are tight and functional.

Cleaning

- Clean the machine and components after each use to remove debris and dust.
- Use a soft cloth and avoid harsh chemicals to protect the machine's finish.

Storage

- Store the machine in a dry, dust-free location when not in use.
- Cover the machine to prevent exposure to moisture and contaminants.

Replacement

- Replace worn-out parts like diamond bits, seals, or hoses immediately.
- Use only manufacturer-approved components for replacements.

05 WARRANTY



PRODUCT CHECK AND REPORTING

Upon receiving the product, the buyer should verify, based on the spare parts list and attached spare drawings, that all spare parts are intact and not lost during shipment. Any damages or losses must be officially reported to Aardwolf Industries within eight days of purchase.



WARRANTY INFORMATION

The product comes with a 12-month warranty from the date of purchase, following Aardwolf Industries warranty policy.



WARRANTY EXCLUSIONS

The warranty coverage does not apply if:

- ✘ The product is handled improperly or misused.
- ✘ The user does not follow the instructions outlined in the user manual.
- ✘ Damage results from inadequate maintenance or failure to perform regular inspections.
- ✘ The product is stored in unsuitable or harmful conditions.
- ✘ Unauthorized repairs or modifications are carried out without prior written approval from Aardwolf Industries.
- ✘ Non-genuine or unapproved spare parts are used.



DECLARATION OF CONFORMITY

We declare that the product conforms to the following standards:

- ✘ The Machinery Directive 2006/42/EC

Note: It is the user's responsibility to comply with state or local laws. The end user is responsible for using the equipment safely, in the manner it is designed for, and within the unit's rated capacity.

WE PROVIDE

Simple, Reliable, Cost Saving And
Awesome Ideas For Your Business



FIND THE NEAREST AARDWOLF SERVICE CENTER

AUSTRALIA

1/5 Stanton Road, Seven Hills NSW 2147
Tel: 02 9838 8427
Email: sales@toolrange.com.au
Web: www.aardwolfaustralia.com

BULGARIA

Str.Usta Kolio Ficheto 33
Tel: +359 887 933 754
Email: adrian@toolrange.com

GERMANY

Schulze-Delitzsch-Weg 2, 33175 Bad Lippspringe
Tel: 05252 8382830
Email: sales@toolrange.com.de

INDIA

Harmara Road, Industrial Area, Madanganj, Kishangarh,
District-Ajmer, Rajasthan India 305801
Tel: +91 73000 68444
Email: sales@aardwolf.co.in
Web: www.aardwolf.co.in

USA

9401 Norwalk Blvd, Santa Fe Springs, CA 90670
Tel: (562) 553-6050
Email: sales@aardwolfusa.com
Web: www.aardwolfusa.com

VIETNAM

1B, An Phu, Thuan An City, Binh Duong Province, Vietnam
Tel: +84 931 707 793
Email: info@aardwolf.com.au
Web: www.aardwolf.com.au

