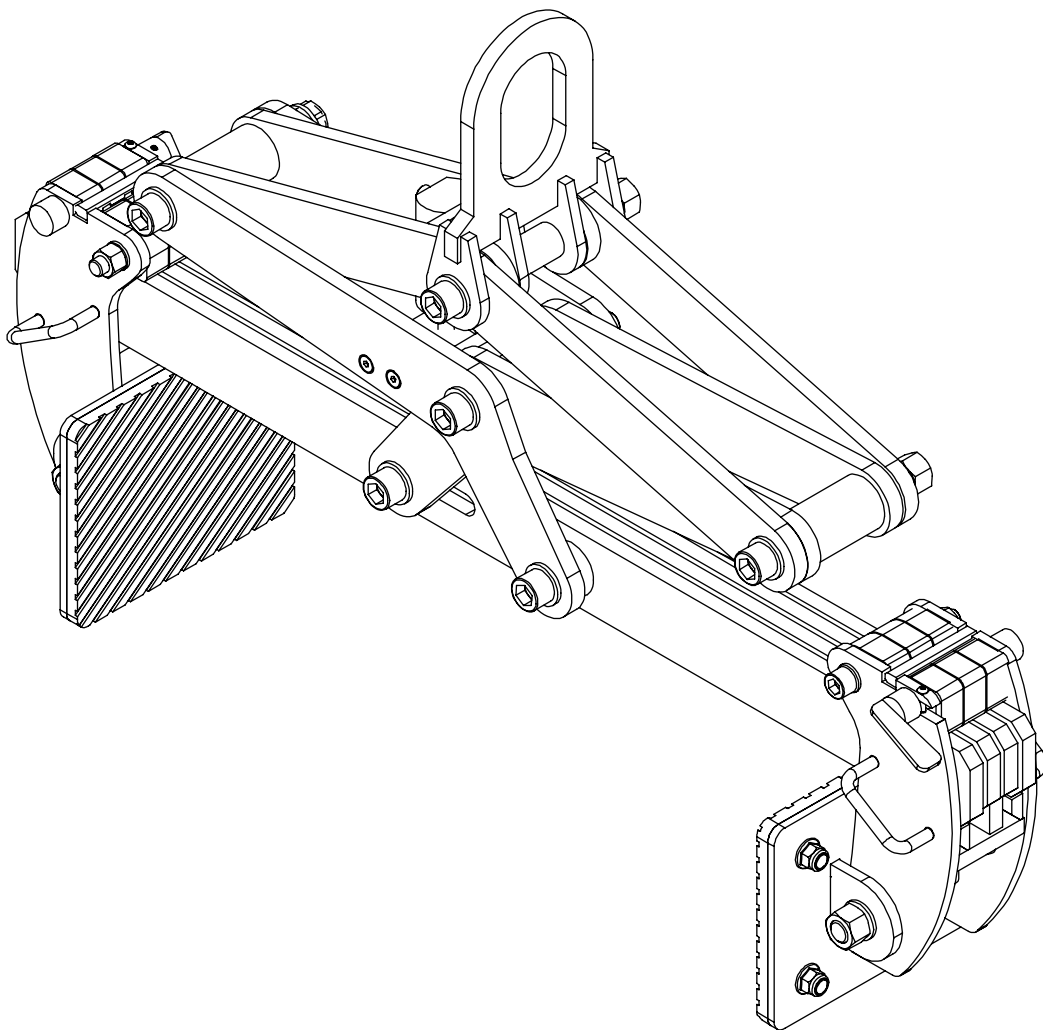


# VERSA BLOCK CLAMP

**AVBC-600**



## CREATED BY

**AARDWOLF INDUSTRIES**  
*Marketing Department*

Published on:  
**October 2025**

Contact us:  [info@aardwolf.com.au](mailto:info@aardwolf.com.au)  
 [www.aardwolf.com.au](http://www.aardwolf.com.au)



# INDEX

Page

## 01 OVERVIEW

Introduction	04
Technical data	05

## 02 SAFETY INSTRUCTIONS

General	08
Warnings	09

## 03 USER INSTRUCTIONS

Operating the Lifter	10
Changing/ Reversing the pad	11

## 04 MAINTENANCE

In-Service inspection (Daily/before use)	12
Periodic inspection (Every 12 months)	12
General maintenance	12

## 05 TROUBLESHOT

## 06 WARRANTY

## 07 AARDWOLF SERVICES

**Dear Customer,**

Thank you for choosing the **Versa Block Clamp AVBC-600**.

Please read the manual carefully before use and keep it readily accessible beside the Clamp at all times.

If you have any questions, require spare parts, or need to report any issues, please contact the Aardwolf distributor at your location, provide the product code and serial number, and send them to **info@aardwolf.com.au** for assistance.

We hope this advanced tool meets your needs and exceeds your expectations.

Best regards,

**Aardwolf Industries**

 [info@aardwolf.com.au](mailto:info@aardwolf.com.au)

 [www.aardwolf.com.au](http://www.aardwolf.com.au)

# 01 OVERVIEW



## INTRODUCTION

The Versa Block Clamp (AVBC-600) is a heavy-duty, multi-purpose lifting device designed to safely and efficiently handle concrete blocks, stone blocks, rubber tires, drums, and similar materials. Engineered for compatibility with cranes and forklifts, the clamp features an automatic, gravity-controlled locking mechanism that securely grips loads during lifting and releases them upon placement - eliminating the need for manual adjustment.

The clamp includes two sliding clamp arms, each consisting of a steel clamp fitted with an attached clamp pad. These arms can be adjusted to fit different load sizes, reversed for internal or external gripping, and swapped out with other types to suit flat or curved material surfaces. The rubber lining on the steel clamps provides strong friction to hold loads securely and helps prevent surface damage during lifting. Built with a durable steel frame and powder-coated finish, the AVBC-600 is made for tough industrial use.

### Key features

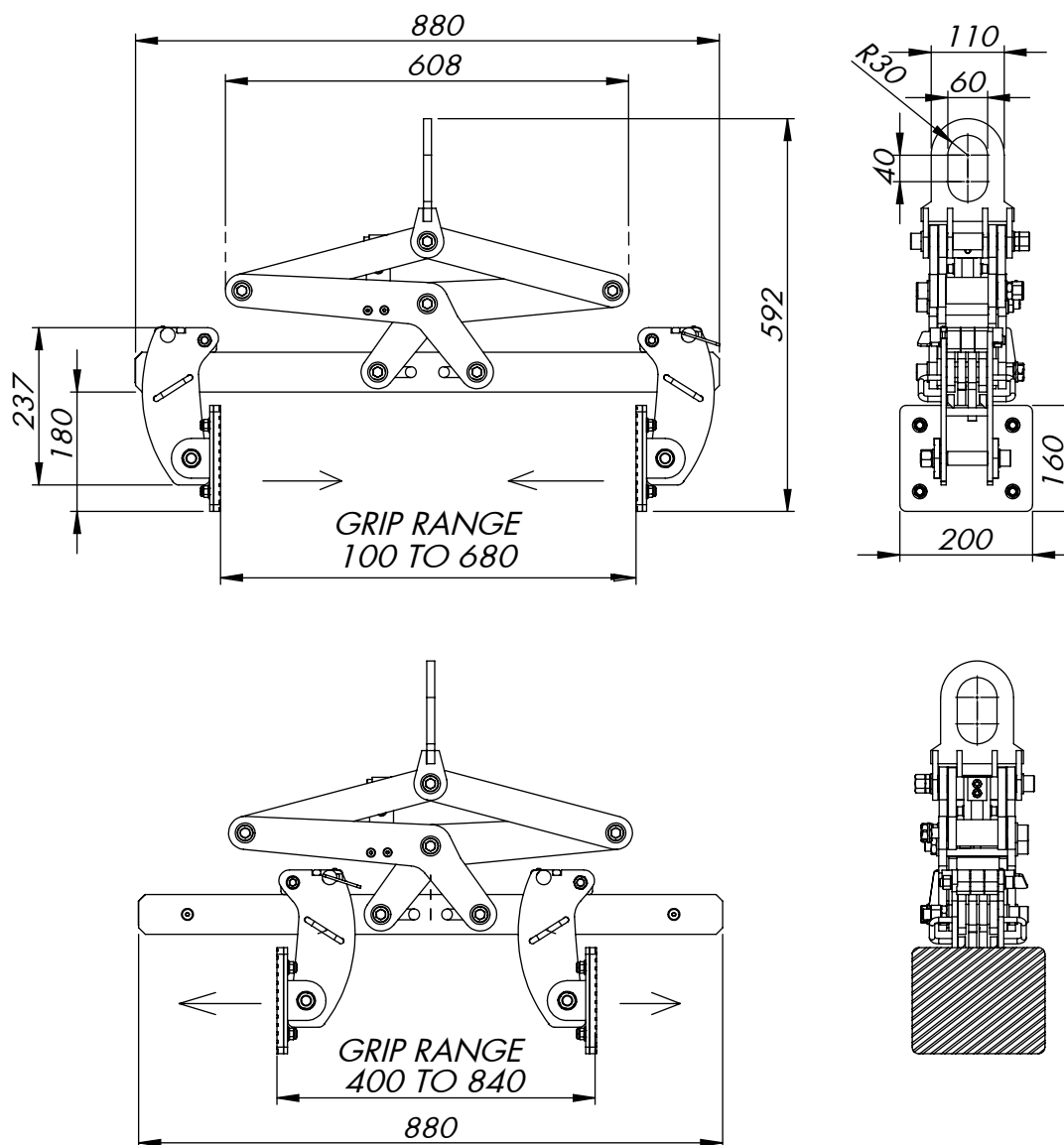
- ✦ **Automatic Locking Mechanism**  
Gravity-controlled system grips and releases loads.
- ✦ **Adjustable Grip Width**  
Accommodates loads from 100–610 mm (4"–24").
- ✦ **Reversible & Replaceable Pads**  
Pads can be flipped for internal/external gripping or swapped for different material profiles.
- ✦ **Heavy-Duty Capacity**  
Lifts up to 1,200 kg (2,646 lbs).
- ✦ **High-Friction Rubber Lined**  
Prevents slippage and protects load surfaces.
- ✦ **Cam Lock Mechanism**  
Secures the position of the clamp arms using the cam locks to maintain safe grip alignment during operation.
- ✦ **Crane Hook Ready**  
Central lifting eye for fast and safe crane attachment.
- ✦ **Durable Build**  
Steel construction with powder-coated finish.





## TECHNICAL DATA

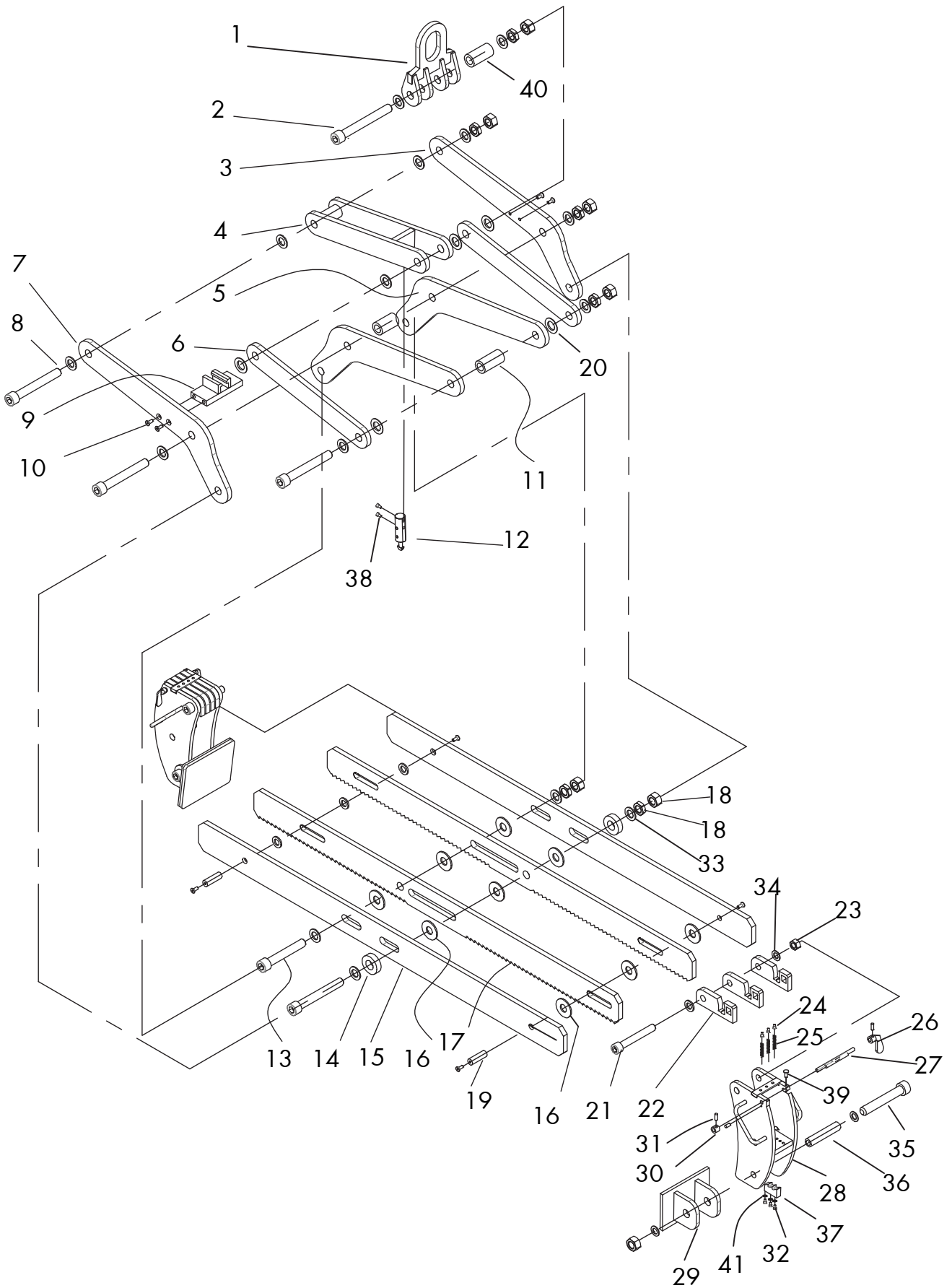
### DIMENSIONS



### SPECIFICATIONS

AVBC-600	METRIC	IMPERIAL
Grip range	100 - 610 mm	4" - 24"
Working load limit	1200 kgs	2646 lbs
Net weight	57 kgs	125.7 lbs
Gross weight	62 kgs	136.7 lbs
Packaging dimensions	930 x 230 x 490 mm	33 5/8" x 9" x 19 1/4"

**ASSEMBLY DIAGRAM**



## PARTS LIST

POS.	DESCRIPTION	Q'TY	POS.	DESCRIPTION	Q'TY
1	Hook	1	26	Cam	2
2	Socket Head Cap Screw M16x160	1	27	Cam Lock	2
3	Lower Arm-Right	1	28	Clamp pad	2
4	Upper Arm-In	1	29	Steel Clamp	2
5	Lower Arm-In	2	30	Cam Nut	2
6	Upper Arm-Out	2	31	Socket Screw Cone Point M4x10	6
7	Lower Arm-Left	1	32	Socket head cap screw M8x25	6
8	Socket Head Cap Screw M16x140	4	33	Round Washer M16	16
9	Lock base	1	34	Round Washer M12	4
10	Socket Countersunk Screw M6x20	4	35	Socket Head Cap Screw M16x120	2
11	Bushing	2	36	Washer tube	2
12	AW Lock	1	37	Gear Lock	2
13	Socket Head Cap Screw M16x110	1	38	Socket Head Cap Screw M8x40	2
14	Washer 25*16*4	2	39	Screw M4x30	1
15	Horizontal Bar	2	40	Bushing 2	1
16	Washer 30*16.5*4	12	41	Spring Washer M8	6
17	Gear-run	2			
18	Nut M16	16			
19	Shaft 16	2			
20	Washer Brass F18	20			
21	Socket Head Cap Screw M12x100	2			
22	Cam Base	6			
23	Torque Nut M12	2			
24	Socket Head Cap Screw M6x10	6			
25	Spring	6			

# 02 SAFETY INSTRUCTIONS



## GENERAL

### PREPARATION

#### ✦ Training

The operator must be trained and possess the necessary knowledge, skills, and expertise in all relevant industry and regulatory standards for operating the equipment in their geographical location.

#### ✦ Manual Availability

Ensure the operator's manual is available and understood by all operators.

#### ✦ Equipment Compatibility

Confirm that the crane, hoist, or forklift used is rated to support the clamp's working load limit (W.L.L.) of 1,200 kg (2,646 lbs), including the clamp's own weight.

#### ✦ Load Specifications

Only lift a single, solid load at a time. The load must have a flat, rough, or curved but non-porous surface. Do not attempt to lift porous, fractured, wet, or greasy materials.

#### ✦ Regulatory Compliance

Follow all applicable local, regional, or national safety laws and lifting regulations during use.

### PRE-USE CHECKS

#### ✦ Visual Inspection

Before each use, inspect the clamp for wear, damage, loose fasteners, or missing parts. Do not use if any defects are found.

#### ✦ Clamp Pad Condition

Check that the clamp pads and rubber-faced steel clamps are clean, dry, and free from dirt, oil, or debris. Dirty or wet pads can reduce friction and compromise safety.

#### ✦ Pad Position & Locking

Verify that the pads are securely positioned using the locking latch and cam lock mechanism, and that the sliding arms move smoothly.

#### ✦ Area Clearance

Ensure the lifting area is clear of obstacles and personnel.

#### ✦ Load Fit

Confirm the load fits within the clamp's grip range (100–610 mm) and is fully seated into the clamp jaws before lifting.

## OPERATING INSTRUCTIONS

- ✦ **Centering the Load**  
Always center the clamp over the load to ensure balance.
- ✦ **Secure Grip Before Lifting**  
Make sure the clamp pads are fully engaged and locked before hoisting.
- ✦ **Wear Protective Gear**  
Operators must wear appropriate PPE, including helmets, gloves, and safety footwear.
- ✦ **Environmental Conditions**  
Do not operate the clamp in rain, high humidity, or slippery conditions, as this may affect the grip of the rubber pads.
- ✦ **No Standing Under Load:**  
Never allow personnel to stand beneath a suspended load.
- ✦ **Suspension Safety**  
Do not leave loads suspended or unattended. Always lower the load when not in active use.



## WARNINGS

### ALWAYS

- Wear proper personal protective equipment (PPE).
- Inspect the clamp before each use.
- Ensure all safety labels and load capacity markings are present and legible.
- Confirm that the load is within the clamp's rated capacity.
- Ensure the clamping surfaces and load contact points are clean and dry.
- Use both cam locks to secure the clamp arms before lifting.
- Lift and move only one load at a time.
- Store the clamp properly when not in use.
- Schedule a full inspection by a competent person every 12 months and keep inspection records.

### NEVER

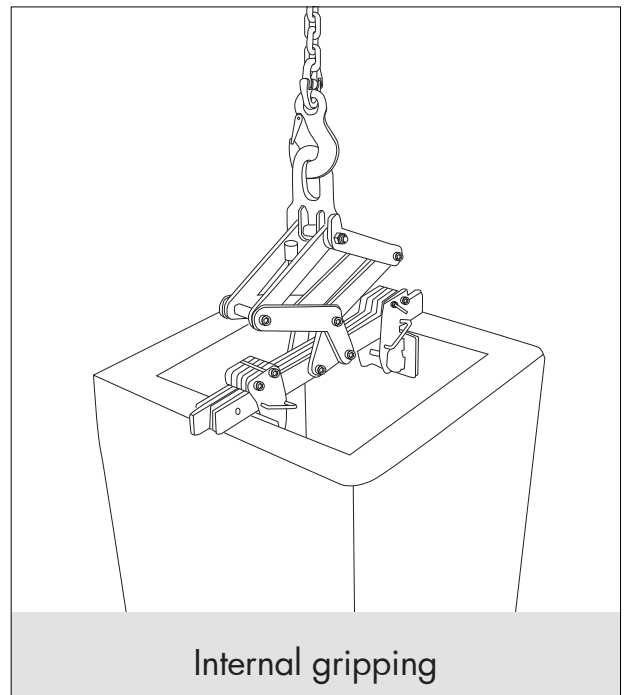
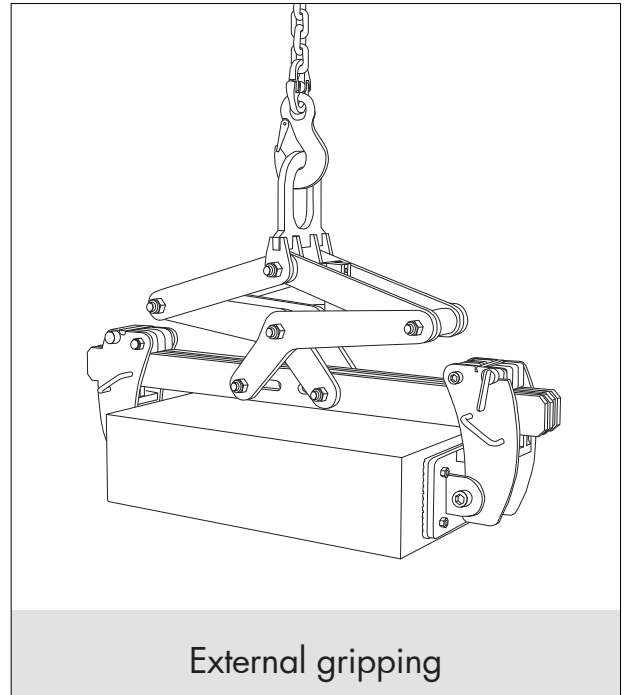
- Use the clamp if any part is damaged, worn, or missing.
- Exceed the rated W.L.L. of 1,200 kg (2,646 lbs).
- Attempt to lift cracked, unstable, or porous materials.
- Lift wet or greasy blocks, as this reduces the grip of the rubber pads.
- Stand under or near a suspended load.
- Use the clamp if warning labels are missing or unreadable.
- Modify the clamp or use non-original spare parts.
- Operate the clamp if the load is not fully inserted into the jaws.
- Use the clamp in explosive or hazardous environments.
- Lift more than one object at a time.

# 03 USER INSTRUCTIONS



## OPERATING THE LIFTER

- 1** **Connect to Crane or Hoisting Equipment**
  - Attach the lifting hook to a crane or hoisting device.
  - Ensure all connections are secure.
- 2** **Positioning**
  - Align the clamp squarely with the center of the block.
  - Lower the clamp onto the load.
- 3** **Adjusting Clamp Arms**
  - Rotate the cam locks counterclockwise to release the clamp arms.
  - Slide the arms to match the load width.
  - Rotate the cam locks clockwise to securely lock the clamp arms in position.
- 4** **Lifting**
  - Ensure the load is fully seated between the clamp arms.
  - Raise the hoist slowly; the clamp will automatically engage and grip the load.
  - Move the load carefully to the desired location, avoiding sudden or jerky motion.
- 5** **Releasing**
  - Lower the load; the clamp will automatically release once the load is at rest.
  - Raise the hoist to disengage and lift the clamp away from the load.



- **NOTE: Internal Gripping (Optional):** Reverse the clamp arms for gripping from the inside face. Follow the same steps to lock, lift, and release.



## CHANGING/ REVERSING THE PAD

1. Place the clamp on a flat surface.
2. Rotate the cam locks counterclockwise to slide the clamp pads outward.
3. Reverse the clamp arms for internal gripping, or replace with compatible types if needed.
4. Slide the clamp arms back into the desired position.
5. Rotate the cam locks clockwise to securely lock the arms in place.



# 04 MAINTENANCE

To ensure the safe and reliable operation of the AVBC-600, regular maintenance and inspections are required:



## IN-SERVICE INSPECTION (DAILY/BEFORE USE)

- ✧ Perform a visual check before each use.
- ✧ Inspect all parts for wear, cracks, deformation, or loose fasteners.
- ✧ Ensure the clamp arms, especially the rubber-lined surfaces, are clean, undamaged, and free from oil or debris.
- ✧ Verify that the cam locks operate smoothly and securely hold the clamp arms.
- ✧ Do not use the clamp if any defects are found.



## PERIODIC INSPECTION (EVERY 12 MONTHS)

- ✧ A qualified professional must inspect and test the clamp at least once a year.
- ✧ Inspections must be documented and comply with local safety regulations.
- ✧ Only original spare parts may be used for repairs or replacements.



## GENERAL MAINTENANCE

- ✧ Keep all sliding components clean and lightly lubricated if necessary.
- ✧ Store the clamp in a dry, sheltered area when not in use.
- ✧ Replace worn clamp arms or hardware as soon as signs of deterioration appear.

# 05 TROUBLESHOOT

PROBLEM	POSSIBLE CAUSES	SOLUTIONS
Clamp does not grip the load	Clamp arms not properly adjusted or locked	Adjust grip width and re-lock using the cam locks (POS. 27)
Load slips during lifting	Rubber surfaces dirty, oily, or worn	Clean or replace clamp pads and steel clamps (POS. 28, 29).
Clamp does not release after placing	Load not fully settled or cam lock mechanism jammed	Ensure load is properly seated; check cam mechanism (POS. 26, 27).
Clamp arms don't slide	Debris or mechanical wear in sliding mechanism	Clean and lubricate sliding components.
Clamp arms cannot be locked	Cam lock (POS. 27) damaged or misaligned	Inspect and realign cam (POS. 26) and cam lock (POS. 27)
Uneven lifting or tilting	Clamp is not centered on the load	Reposition clamp to center before lifting.

**Note:** For serious issues or additional support, please get in touch with Aardwolf Technician Support at [info@aardwolf.com.au](mailto:info@aardwolf.com.au). Our experts are ready to assist with any complex problems to ensure your equipment operates smoothly.

# 06 WARRANTY



## PRODUCT CHECK AND REPORTING

Upon receiving the product, the buyer should verify, based on the spare parts list and attached spare drawings, that all spare parts are intact and not lost during shipment. Any damages or losses must be officially reported to Aardwolf Industries within eight days of purchase.



## WARRANTY INFORMATION

The product comes with a 12-month warranty from the date of purchase, following Aardwolf Industries warranty policy.



## WARRANTY EXCLUSIONS

The warranty coverage does not apply if:

- ✘ The Clamp is handled incorrectly during maneuvering.
- ✘ The user fails to comply with the instructions provided in the manual.
- ✘ The Clamp's maximum WLL is exceeded.
- ✘ The specifications for the load thickness are not followed.
- ✘ Damages result from inadequate maintenance and inspections.
- ✘ Damage is due to improper storage.
- ✘ Repairs are performed by the user without permission from Aardwolf Industries.
- ✘ Unofficial spare parts are used.



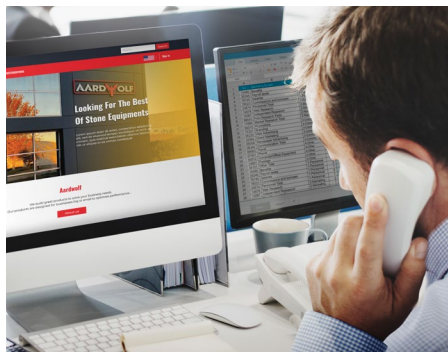
## DECLARATION OF CONFORMITY

We declare that the product conforms to the following standards:

- ✘ The Machinery Directive 2006/42/EC
- ✘ Australian Standard 4991-2004

**Note:** *It is the user's responsibility to comply with state or local laws. The end user is responsible for using the equipment safely, in the manner it is designed for, and within the unit's rated capacity.*

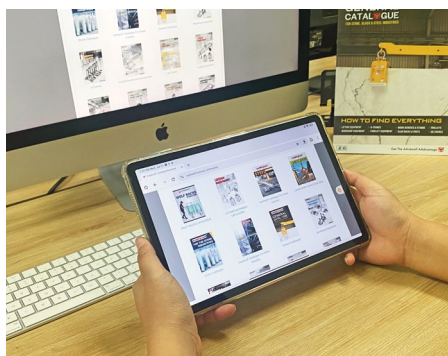
# 07 AARDWOLF SERVICES



## GLOBAL CONTACT

Our sales network of local field representatives, international subsidiaries and trade partners ensures quick and competent information and consultation in 6 countries worldwide.

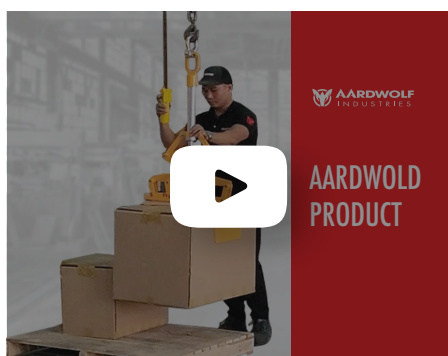
 [www.aardwolf.com.au](http://www.aardwolf.com.au)



## ONLINE DOCUMENTATION


Conveniently download catalogs and get comprehensive information about our products and services.

 [www.aardwolf.com.au/catalog.php](http://www.aardwolf.com.au/catalog.php)



## AARDWOLF PRODUCT VIDEOS

In short, easy-to-understand videos we explain the comprehensive functions offered by our products on our Youtube Channel. Take a look, it's worth it!

 [www.youtube.com/@Aardwolf.English](http://www.youtube.com/@Aardwolf.English)

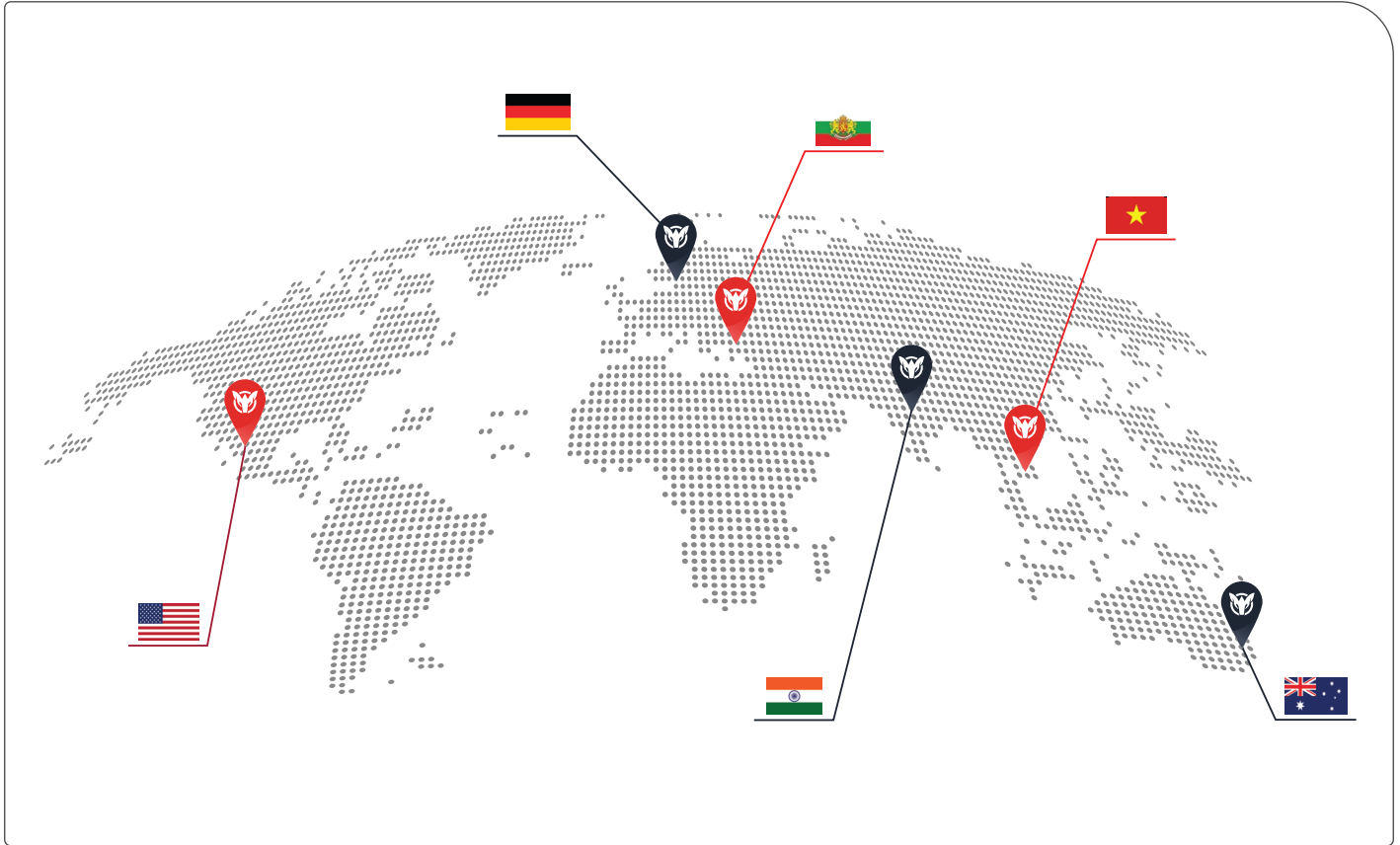


**SCAN HERE**

To visit our Youtube Channel

## WE PROVIDE

Simple, Reliable, Cost Saving And  
Awesome Ideas For Your Business



## FIND THE NEAREST AARDWOLF SERVICE CENTER

### AUSTRALIA

1/5 Stanton Road, Seven Hills NSW 2147  
Tel: 02 9838 8427  
Email: [sales@toolrange.com.au](mailto:sales@toolrange.com.au)  
Web: [www.aardwolfaustralia.com](http://www.aardwolfaustralia.com)

### BULGARIA

Str.Usta Kolio Ficheto 33  
Tel: +359 887 933 754  
Email: [adrian@toolrange.com](mailto:adrian@toolrange.com)

### GERMANY

Schulze-Delitzsch-Weg 2, 33175 Bad Lippspringe  
Tel: 05252 8382830  
Email: [sales@toolrange.com.de](mailto:sales@toolrange.com.de)

### INDIA

Harmara Road, Industrial Area, Madanganj, Kishangarh,  
District- Ajmer, Rajasthan India 305801  
Tel: +91 73000 68444  
Email: [sales@aardwolf.co.in](mailto:sales@aardwolf.co.in)  
Web: [www.aardwolf.co.in](http://www.aardwolf.co.in)

### USA

9401 Norwalk Blvd, Santa Fe Springs, CA 90670  
Tel: (562) 553-6050  
Email: [sales@aardwolfusa.com](mailto:sales@aardwolfusa.com)  
Web: [www.aardwolfusa.com](http://www.aardwolfusa.com)

### VIETNAM

1B, An Phu, Thuan An City, Binh Duong Province, Vietnam  
Tel: +84 931 707 793  
Email: [info@aardwolf.com.au](mailto:info@aardwolf.com.au)  
Web: [www.aardwolf.com.au](http://www.aardwolf.com.au)

