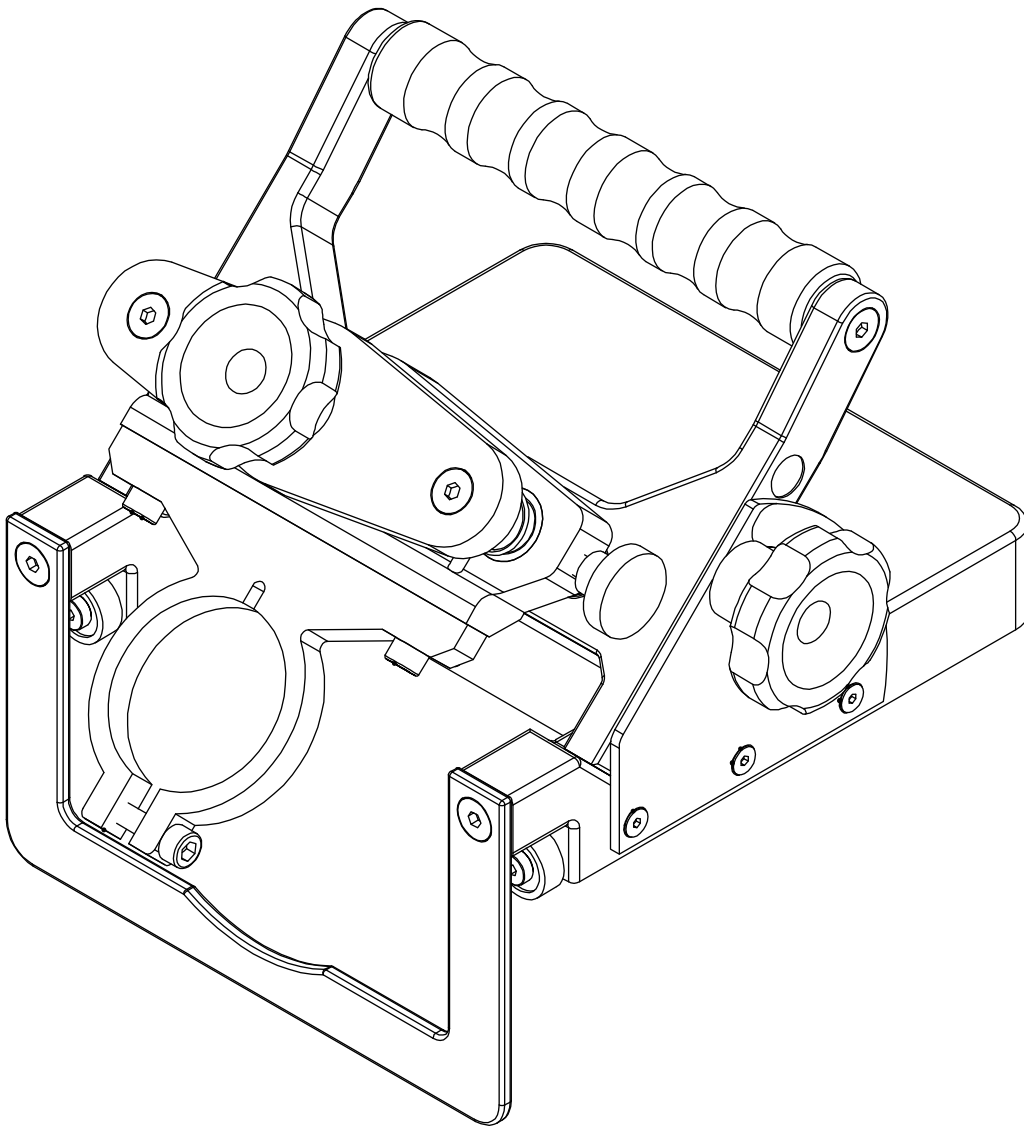


EGDE POLISHING TOOL

AEPT1



CREATED BY

AARDWOLF INDUSTRIES
Marketing Department

Published on:
Jun 2025

Contact us:  info@aardwolf.com.au
 www.aardwolf.com.au



INDEX

Page

01 OVERVIEW

Introduction	04
Technical data	05

02 SAFETY INSTRUCTIONS

General safety guidelines	08
Warnings	08

03 USER INSTRUCTIONS

09

04 MAINTENANCE

10

05 WARRANTY

11

Dear Customer,

Thank you for choosing the **Edge Polishing Tool – AEPT1**.

Please read the manual carefully before use and keep it readily accessible beside the equipment at all times.

If you have any questions, require spare parts, or need to report any issues, please contact the Aardwolf distributor at your location, provide the product code and serial number, and send them to **info@aardwolf.com.au** for assistance.

We hope this tool meets your needs and exceeds your expectations.

Best regards,

Aardwolf Industries



info@aardwolf.com.au



www.aardwolf.com.au

01 OVERVIEW



INTRODUCTION

The Edge Polishing Tool – AEPT1 is a robust auxiliary base designed to support and guide pneumatic polishers with a 50mm or 52mm collar diameter (polisher not included), for precise edge grinding and polishing applications. Optimized for 45° bevel and 90° straight-edge polishing, the AEPT1 offers stone fabricators and countertop installers a stable, ergonomic, and highly accurate solution for edge finishing.

Designed with precision adjustment mechanisms, an integrated protractor, and eight smooth-rolling wheels, the AEPT1 ensures controlled movement along granite, marble, and engineered stone surfaces edges. This allows operators to achieve clean, uniform bevels or straight edges with consistent professional results.

Key features

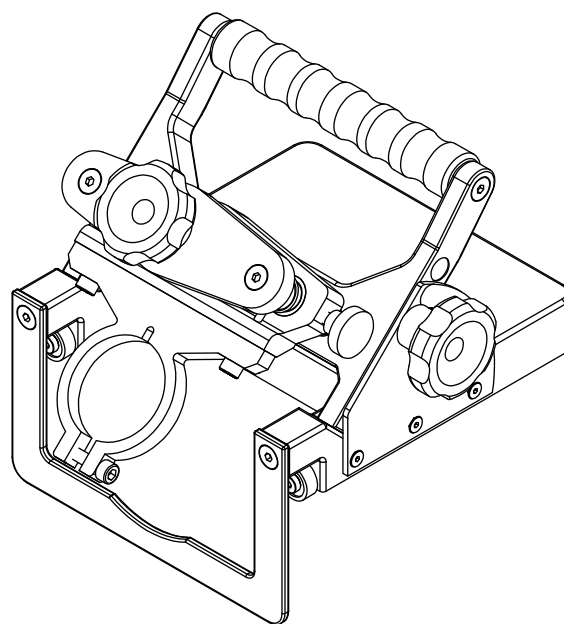
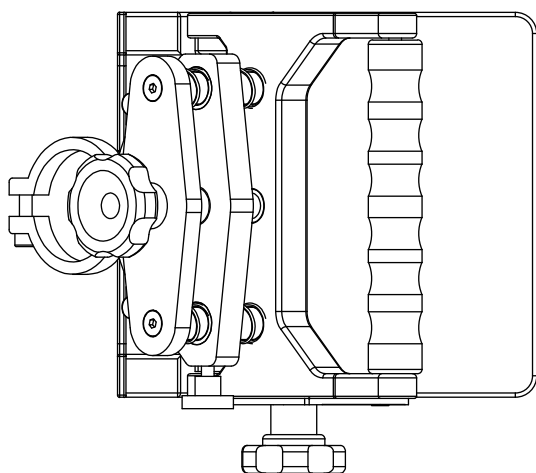
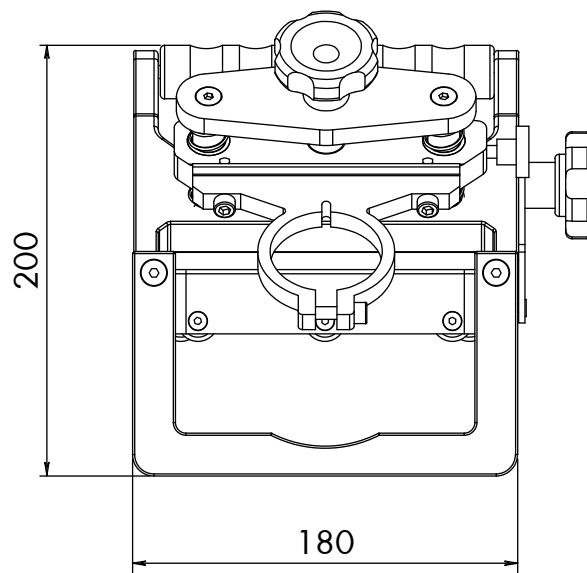
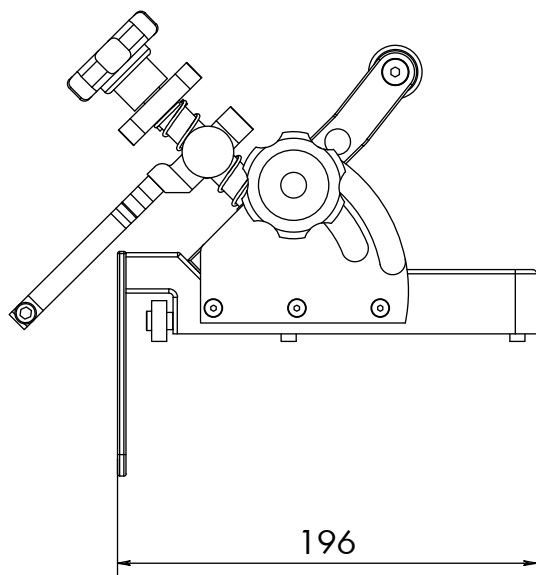
- ✦ **Polisher Compatibility:** Compatible with pneumatic polishers featuring a 50mm or 52mm collar diameter (polisher not included).
- ✦ **45° & 90° Edge Polishing:** Comes with two interchangeable bases for bevel polishing (15° – 45°) and straight-edge polishing (60° – 90°), adaptable to different job needs.
- ✦ **Built-In Protractor:** Integrated protractor for accurate and repeatable angle setting.
- ✦ **Easy Adjustments:** Knobs allow quick tuning of grinding height and angle.
- ✦ **Smooth Rolling:** Eight rubber rollers provide stable, low-friction movement.
- ✦ **Ergonomic Handle:** Comfortable grip for better control during use.
- ✦ **Durable Build:** Constructed with high-quality materials for strength and longevity in high-humidity environments.
- ✦ **Compact Design:** Ideal for use on narrow slab edges and tight spaces.
- ✦ **Professional Finish:** Produces straight, uniform bevels for seamless joints.



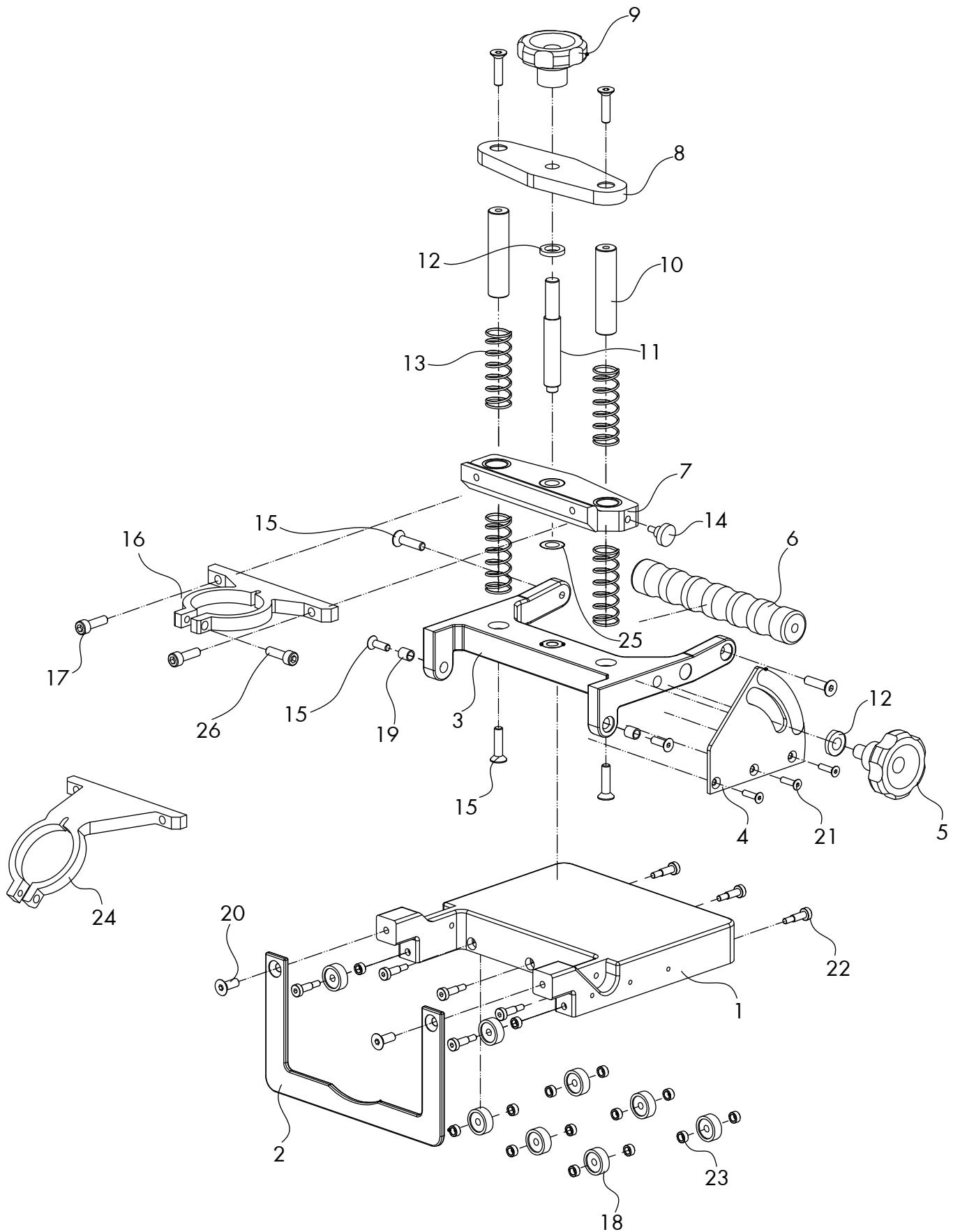


TECHNICAL DATA

DIMENSIONS



ASSEMBLY DIAGRAM



PARTS LIST

POS.	DESCRIPTION	Q'TY	POS.	DESCRIPTION	Q'TY
1	Main Base	1	14	Turn-Knob M6	1
2	Support Base	1	15	Hexagon Socket Countersunk Screws M6x20	8
3	Handle	1	16	Machine Base A	1
4	Angular Table	1	17	Hexagon Socket Head Bolts M6x20	2
5	Turn-Knob	1	18	Wheel	8
6	Plastic Handle	1	19	Handle Bushing	2
7	Lift Base	1	20	Hexagon Socket Countersunk Screws M6x16	2
8	Lift Support Base	1	21	Screws M4x10	3
9	Lift Turn-Knob	1	22	Shoulder Screws M5x20	8
10	Gliding Pin	2	23	Wheel Bushing	14
11	Thread Pin	1	24	Machine Base B	1
12	Washer Ø10	2	25	Copper Washer Ø10	1
13	Spring	4	26	Hexagon Socket Head Bolts M6x25	1

SPECIFICATIONS

AEPT1	METRIC	IMPERIAL
Net weight	3.3 kgs	7.3 lbs
Collet diameter	53 mm	2 1/8 "

02 SAFETY INSTRUCTIONS



GENERAL SAFETY GUIDELINES

- ✧ Wear appropriate personal protective equipment (PPE) at all times, including safety glasses, gloves, hearing protection, and a dust mask or respirator if required.
- ✧ Ensure the work surface is clean, dry, and stable before beginning operation.
- ✧ Use only pneumatic polishers that are compatible with the AEPT1.
- ✧ Ensure the correct base is installed before operation (Base A for 15° – 45°, Base B for 60° – 90° edge angles). Ensure fittings are sealed to prevent air or water leaks which may affect tool performance.
- ✧ Before connecting the air supply, confirm that all adjustment knobs and fasteners are securely tightened.
- ✧ Use both hands when operating the machine to maintain control.
- ✧ Keep hands, clothing, and loose items away from moving parts.
- ✧ Disconnect the air and water supply before making any adjustments, changing tools, or performing maintenance.
- ✧ Perform routine inspections for damage, wear, or loose components before each use.
- ✧ Clean the machine regularly to prevent slurry buildup and ensure smooth operation.
- ✧ Store the tool in a dry, protected area when not in use.



WARNINGS

✓ ALWAYS

- Wear personal protective equipment.
- Confirm that the polisher is securely mounted and the base is stable before operation.
- Tighten all knobs and fasteners before connecting to the air supply.
- Inspect the tool before each use for wear, damage, or loose parts.
- Use both hands to maintain control during polishing.
- Keep your work area clean, and free of obstructions.

✗ NEVER

- Never use polisher incompatible with the AEPT1.
- Never make adjustments or service the unit while connected to the air or water.
- Never exceed the specified air pressure for your polisher.
- Never use the tool on unstable or uneven surfaces.
- Never modify the tool or use unapproved accessories.
- Never use the tool in confined or dusty environments.

03 USER INSTRUCTIONS

1. Machine Setup

- Select the appropriate base according to the desired bevel angle:
 - Base A (pos.16): For beveling from 15° to 45°.
 - Base B (pos.24): For straight-edge polishing at 90°.
- Attach the selected base to the main body. Align and secure it using screws.
- Mount the polisher onto the installed base and tighten it.
- Connect the polisher to the air supply using a standard quick joint. Ensure the connection is tight and leak-free before turning on the air.
- Connect a Ø6mm water hose to the water inlet on the polisher body. Ensure the connection is secure to prevent leakage.
- Apply a protective layer and tape at the wheel contact points on the stone surface to avoid scratching.

2. Adjustment

- Bevel Angle Adjustment
 - Loosen the angle adjustment knob (Turn-Knob - pos. 5).
 - Rotate the angular table (Angular Table - pos.4) to the desired angle:
 - Use Base A for 15° – 45°.
 - Set the knob to 45° when using Base B to achieve a true 90° angle.
 - Tighten the knob to lock the position.
- Height Adjustment
 - Loosen the height adjustment knob (Lift Turn-Knob - pos. 9).
 - Slide the polishing unit up or down as needed to match the thickness of the stone slab.
 - Tighten the knob to secure the position.

3. Operating the Machine

- Position the AEPT1 at the edge of the prepared stone slab, ensuring all 8 wheels (pos.18) are in full contact with the surface.
- Activate the polisher. Adjust the air pressure to achieve the desired operating speed.
- Adjust the water flow using the flow control knob on the integrated water valve (if using wet polishing).
- Move the machine steadily along the edge, applying light and even pressure.
- Maintain control using the plastic handle (pos. 6) the polisher handle.

4. Shutdown

- Turn off the polisher and disconnect the air supply.
- Disconnect both the air and water hoses.
- Clean the tool thoroughly to remove dust and moisture.
- Inspect all components such as wheels, bolts, and handles.
- Store the machine in a dry, clean, and well-ventilated area.

04 MAINTENANCE

Inspection

- Check for wear, cracks, or loosened parts.
- Check for abnormal vibration or noise during operation.
- Ensure knobs turn smoothly and wheels roll evenly.
- Inspect fasteners, pins, and bushings for damage.

Cleaning

- Wipe off dust and slurry after each use. Avoid using metal brushes or abrasive tools that may scratch the base.
- Dry thoroughly after wet polishing.
- Do not use high-pressure water or harsh chemicals.

Storage

- Store in a dry, shaded place away from moisture and impact.
- Use original packaging or a protective case if available.

Replacement

- Replace damaged parts with genuine components.
- Common parts: wheels, bushings, gliding pins.

05 WARRANTY



PRODUCT CHECK AND REPORTING

Upon receiving the product, the buyer should verify, based on the spare parts list and attached spare drawings, that all spare parts are intact and not lost during shipment. Any damages or losses must be officially reported to Aardwolf Industries within eight days of purchase.



WARRANTY INFORMATION

The product comes with a 12-month warranty from the date of purchase, following Aardwolf Industries' warranty policy.



WARRANTY EXCLUSIONS

The warranty coverage does not apply if:

- ✘ The product is handled improperly or misused.
- ✘ The user does not follow the instructions outlined in the user manual.
- ✘ Damage results from inadequate maintenance or failure to perform regular inspections.
- ✘ The product is stored in unsuitable or harmful conditions.
- ✘ Unauthorized repairs or modifications are carried out without prior written approval from Aardwolf Industries.
- ✘ Non-genuine or unapproved spare parts are used.



DECLARATION OF CONFORMITY

We declare that the product conforms to the following standards:

- ✘ The Machinery Directive 2006/42/EC

Note: It is the user's responsibility to comply with state or local laws. The end user is responsible for using the equipment safely, in the manner it is designed for, and within the unit's rated capacity.

WE PROVIDE

Simple, Reliable, Cost Saving And
Awesome Ideas For Your Business



FIND THE NEAREST AARDWOLF SERVICE CENTER

AUSTRALIA

1/5 Stanton Road, Seven Hills NSW 2147
Tel: 02 9838 8427
Email: sales@toolrange.com.au
Web: www.aardwolfaustralia.com

BULGARIA

Str.Usta Kolio Ficheto 33
Tel: +359 887 933 754
Email: adrian@toolrange.com

GERMANY

Schulze-Delitzsch-Weg 2, 33175 Bad Lippspringe
Tel: 05252 8382830
Email: sales@toolrange.com.de

INDIA

Harmara Road, Industrial Area, Madanganj, Kishangarh,
District-Ajmer, Rajasthan India 305801
Tel: +91 73000 68444
Email: sales@aardwolf.co.in
Web: www.aardwolf.co.in

USA

9401 Norwalk Blvd, Santa Fe Springs, CA 90670
Tel: (562) 553-6050
Email: sales@aardwolfusa.com
Web: www.aardwolfusa.com

VIETNAM

1B, An Phu, Thuan An City, Binh Duong Province, Vietnam
Tel: +84 931 707 793
Email: info@aardwolf.com.au
Web: www.aardwolf.com.au

