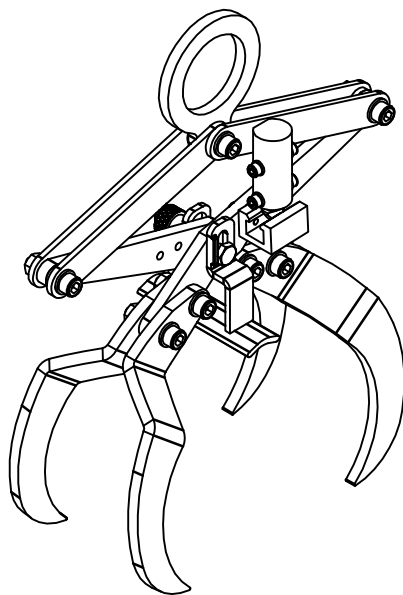




ROUND BAR LIFTER 200

OWNER'S MANUAL

PRODUCT CODE: RBL200



CONTENTS

SPECIFICATIONS ► **FEATURES** ► **SAFETY INSTRUCTIONS** ► **WARRANTY**
SAFETY INSTRUCTIONS FOR HOISTING ACCESSORIES ► **PART DRAWING & PART LIST**
INSTRUCTIONS FOR USE ► **TOP PAD ADJUSTMENT** ► **INSPECTIONS, MAINTENANCE & REPAIR**

With faster, smarter, more efficient, flexible and fully automatic features, The Round Bar Lifter is designed to safely lift steel bars and tubes. This device is equipped with an auto-locking latch mechanism lead with no hydraulic power supply, slings or chains needed. The operator is able to use this device to grab, lift and move pipes without assistance.



1. TECHNICAL SPECIFICATIONS

RBL200	Metric (mm-kg)	Imperial (inch-lb)
Grip diameter range	180 - 200	7" - 8"
Working load limit	150	331
Net weight	7	15
Gross weight	8	18
Packaging dimension	420 x 190 x 370	16.5" x 7.5" x 14.6"

2. FEATURES

- Auto locks and unlocks a load.
- Handling long steel pipes and tubes, especially for steel pipe assembly system.
- Made from durable steel material.
- Sturdy and safe construction.

3. SAFETY INSTRUCTIONS

The Aardwolf Round Bar Lifter (RBL200) have innovational designs to reduce risks, which might occur during the lifting process. It is most important that operators adhere to the safety guidances listed below:

- Carefully read the user manual before operating.
- Only competent and authorized personnel should operate the lifter.
- Ensure that the user manual is available during operation.
- Perform the load test to ensure the lifter is safe before use.
- The load must not exceed the maximum allowable weight specified.
- Inspect the rubber pads to ensure they are free from dirt, grease and other substances.
- Always place the lifter correctly on the load for balancing.
- To avoid injury, people are not allowed to stand under the load.

3. SAFETY INSTRUCTIONS

- Make sure the pipe fits snugly into the RBL200 before lifting.
- Move slowly to avoid shock loading.
- Do not move on the steep gradients when lifting steel tubes.
- Do not carry out any lifting operations if any issues are found.
- Do not use the RBL200 for other purposes that it is not designed for.
- Do not make modifications to the RBL200.
- Never leave a lifted load unsupervised.
- Never operate the RBL200 that is damaged, malfunctioning, or has missing parts.
- Never operate the RBL200 if the clamping jaws are damaged.
- Never use the RBL200 in dangerous environments.

4. SAFETY INSTRUCTIONS FOR HOISTING ACCESSORIES

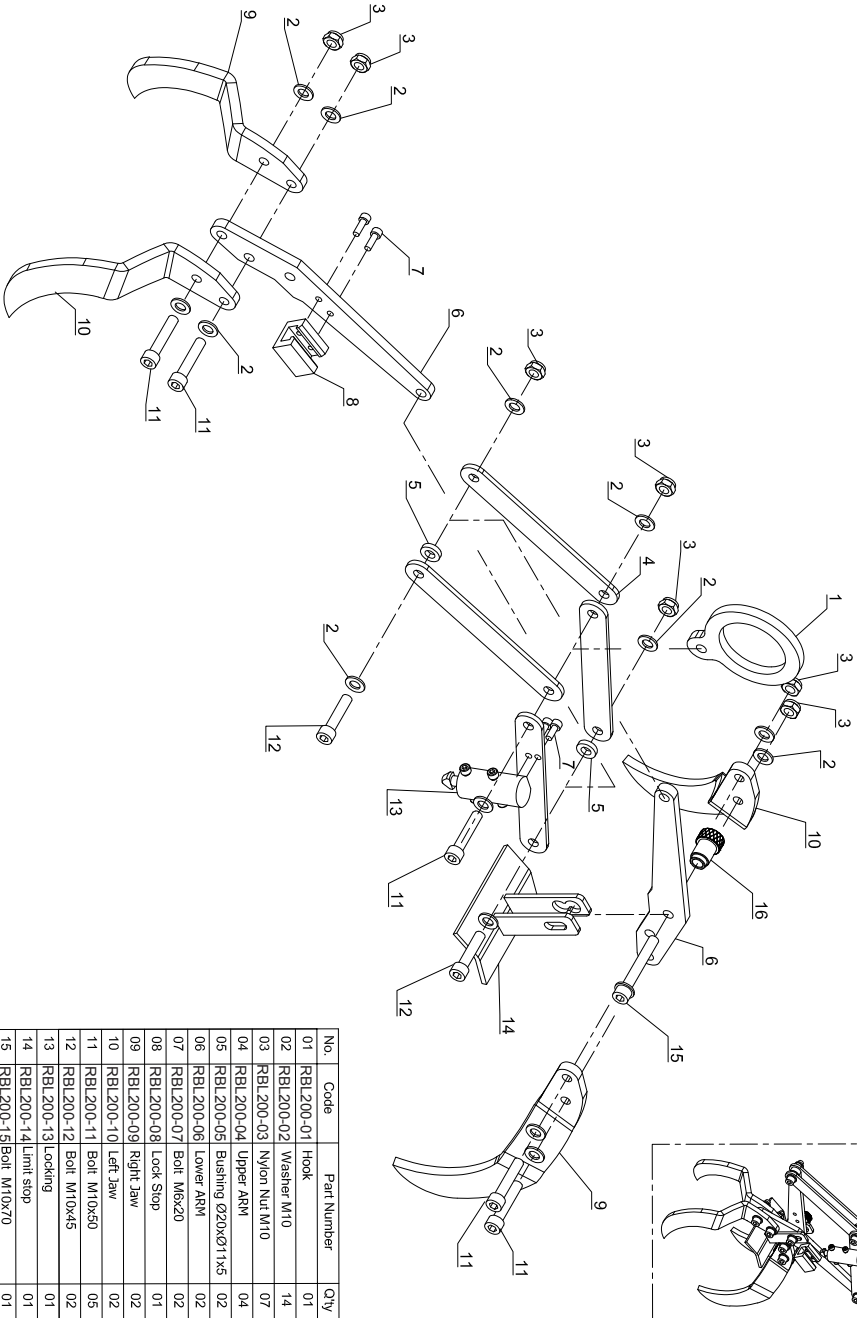
Important! In order to protect people from getting injured, it is important to follow some general safety directions while using hoisting accessories.

- Read the operation manual carefully before you use hoisting accessories.
- Make sure that the operation manual is always available at the place where the hoisting accessories are used.
- Give permission to work with hoisting accessories only to people who are suitably trained and competent.
- Wear safety equipment, like a helmet, gloves, and safety boots.
- Never leave a lifted load unsupervised.
- Lift a load only as much as is really necessary.
- Do not get underneath the load and do not permit others to do so.
- Connections or individual parts of hoisting accessories should never be able to loosen by themselves.
- Hoisting accessories must be stored in a place where they are protected against weather conditions and aggressive substances.
- Defect hoisting accessories are no longer to be used.
- Repairs and checks are to be made only by qualified people.



5. PART DRAWING & PART LIST

ROUND BAR LIFTER - RBL200 DIAGRAM



No.	Code	Part Number	Qty
01	RBL200-01	Hook	01
02	RBL200-02	Washer M10	14
03	RBL200-03	Nylon Nut M10	07
04	RBL200-04	Upper ARM	04
05	RBL200-05	Bushing Ø20xØ11x5	02
06	RBL200-06	Lower ARM	02
07	RBL200-07	Bolt M6x20	02
08	RBL200-08	Lock Stop	01
09	RBL200-09	Right Jaw	02
10	RBL200-10	Left Jaw	02
11	RBL200-11	Bolt M10x50	05
12	RBL200-12	Bolt M10x45	02
13	RBL200-13	Locking	01
14	RBL200-14	Limit stop	01
15	RBL200-15	Bolt M10x70	01
16	RBL200-16	Handknob M10	01

6. INSTRUCTIONS FOR USE

The RBL200 is designed to efficiently steel bar or tubes. However the operator must follow the instructions below to avoid dangers while using it.

- Determine whether the capacity of a crane, excavator or hoist is suitable for use with the RBL200.
- Determine the capacity of bow shackle that is used to attach the lifter with the crane, excavator or hoist to ensure that it is proper and safe.
- The operator should complete all inspections to ensure the lifter is securely fix to the lifting machine before any lifting takes place.
- Perform a load test for the lifter to ensure the RBL200 is attached in accordance with the crane, excavator or hoist before lifting the load.

Step 1: Connect the RBL200 to a crane, excavator or hoists to start.

Step 2: Lift the RBL200 and place this lifter on the steel bar or tube.

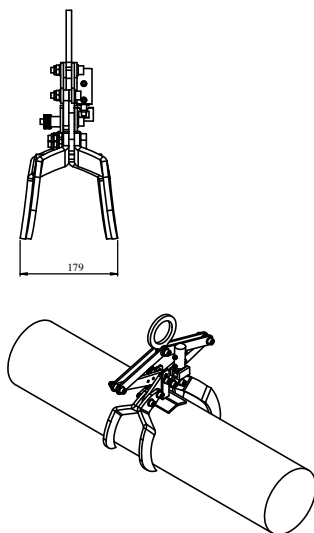
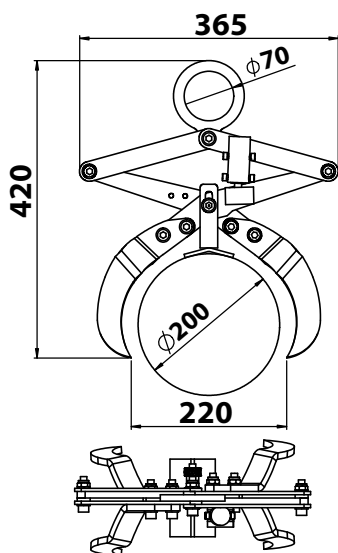
Step 3: Depending on the diameter of the tube, the operatortube must adjust the top pads to suit the diameter of the steel tube.

Step 4: Lower the RBL200 down onto the steel tube. Make sure that RBL200 is secure and fits well into the clamping jaws before lifting and moving.

Step 5: Slowly lift and move the steel tube to the desired location.

Step 6: Carefully lower the steel tube to its desired position. The auto lock will release the tube from the RBL200 so the RBL200 can be moved to the next steel tube.

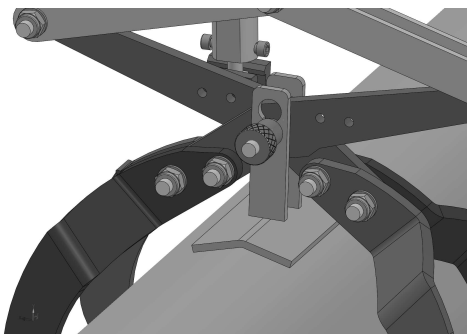
Note: Before lowering the steel tube, ensure that there are no obstructions.



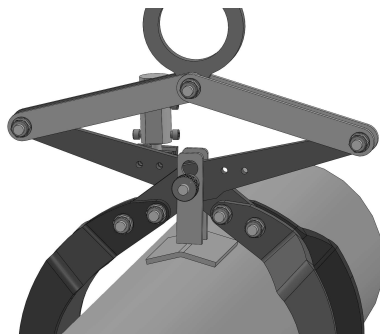
6. TOP PAD ADJUSTMENT

The top pad is designed to fit different diameter steel tubes/bars. It is adjusted simply and quickly. There are some step adjustments that you need to follow:

First: Loosen the bolt.

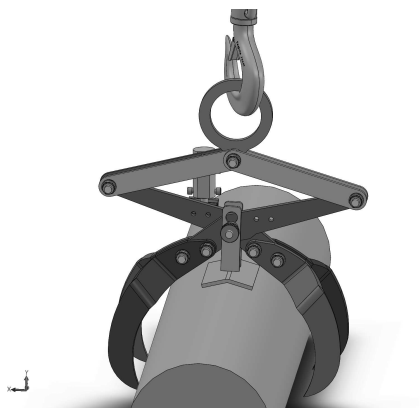


Second: Move the top pad to the required diameter position.



NOTE:
Tube diameter of the
RBL200: 180 – 200mm

Third: Screw the bolt back and make sure that it is tight before lifting.



Fourth: The operator needs to check all parts to ensure they are manoeuvred into the proper position.



8. INSPECTION, MAINTENANCE & REPAIR

There are two types of inspections - in-service and periodic.

In-service:

Visual inspection before each use. This implies that before each lift, the user has a good look over the Round Bar Lifter to ensure that there is no significant damage or wear and that the working load limit tag or markings are fitted and limit legible. At this point, if any defects are noted, the Round Bar Lifter should be withdrawn from service, and inspected by a competent person who can make a decision on whether to use, repair, or discard the Round Bar Lifter.

Periodic:

The Round Bar Lifter should be checked and tested every 12 months by as competent person who has been trained and who can make a decision on whether to use, repair or discard Round Bar Lifter. These inspections also need to be adequately documented and are mandatory in many countries. Always use original spare parts when carrying out repairs or maintenance.

CE - DECLARATION OF CONFORMITY

We declare that the product is in conformity with the following standard: The Machinery Directive 2006/42/EC.

Note: It is the responsibility of the user to adapt to state or local laws. The end-user is responsible to use the equipment safely in a manner that it is designed for and within the rated capacity of the unit.

9. WARRANTY

At the time of delivery, it is necessary to check that the Round Bar Lifter has not been damaged during shipment. Any claims must be presented within 8 days of the date of delivery of the product.

We grant you 12 months warranty on the Aardwolf Round Bar Lifter countered from the day of purchase.

The warranty coverage is not applicable:

- The lifter is handled incorrectly during maneuvering.
- The operator fails to comply with the instructions in this booklet.
- The lifter's maximum permissible capacity is exceeded.
- The specifications for pipe size are not followed.
- Damages are due to inadequate maintenance and inspections.
- Damage is due to improper storage.
- Repairs were performed by the user without our permission.
- Non-original spare parts were used.





AMERICA



AARDWOLF AMERICA

- 📍 19201 S Reyes Avenue, Unit C7
Compton California, 90221
- ☎ (562) 553-6050
- ✉ leo@aardwolfusa.com
- 🌐 www.aardwolfusa.com

INDIA



AARDWOLF NORTH INDIA

- 📍 Harmara Road, Industrial Area,
Madanganj, Kishangarh, Rajasthan
India / Pin no. 305801
- ☎ Tel: +91 93584 48474
- ✉ sales@aardwolf.co.in
- 🌐 Web: www.aardwolf.co.in

AUSTRALIA



AARDWOLF AUSTRALIA

- 📍 1/5 Stanton Road,
Seven Hills NSW 2147
- ☎ +02 9838 8427
- ✉ enquiries@aardwolfaustralia.com
- 🌐 www.aardwolfaustralia.com

INDIA

AARDWOLF CENTRAL INDIA

- 📍 No: 6, Sharma Complex, 3rd Cross,
Ganesha Block, Dinnur Main Road,
R. T. Nagar P.O Bengaluru-560032
- ☎ +91 99017 24600
- ✉ bengaluru@aardwolf.co.in
- 🌐 www.aardwolf.co.in

GERMANY



STONE GLASS EQUIPMENT UG

- 📍 Am GutstKch 11, 8451Crimmitschau
Blankenhain, Germany.
- ☎ +49 366 0811 9236
- ✉ sales@aardwolf.com.de
- 🌐 www.aardwolf.com.de

INDIA

AARDWOLF SOUTH INDIA

- ☎ +91 97659 06007
- ✉ mumbai@aardwolf.co.in
- 🌐 www.aardwolf.co.in

VIETNAM



AARDWOLF VIETNAM

- 📍 1B, An Phu, Thuan An,
Binh Duong, Vietnam.
- ☎ +84 274 371 2827438/39
- ✉ sales@aardwolf.com.au
- 🌐 www.aardwolf.com.au

