



NO ONE LIFTS LIKE US

VERSA BLOCK CLAMP

AVBC-600



PRODUCT FEATURES

The Versa Block Clamp is made for lifting and moving concrete blocks, rubber tires, drums or other materials. The clamp consists of two sliding pads that can be adjusted to the desired widths and they are locked by a locking latch on each side. The Versa Block Clamp is a multipurpose solution when fitted with different jaws to grab the different material types, whether square or curved shapes. These jaws can be easily changed and reversed to allow for picking up objects from the inside face or inside out.

- Handles heavy loads with different capacities. Grips and releases the load automatically. The jaw width is simple and easy to adjust.
- The rubber jaws protect loads from being damaged.
- Optional jaws for different material shapes.
- Lifting eye allows for easy hook attachment.

NOVEMBER, 2023



SPECIFICATIONS

AVBC-600	METRIC	IMPERIAL
Grip range	100 - 610 mm	4 – 24 in
Working load limit	1200 kg	2646 lb
Net weight	50 kg	110 lb
Gross weight	55 kg	121 lb
Packaging dimensions	840 x 220 x 490 mm	33 x 8.7 x 19.3 in



PARTS LIST

POS.	CODE	DESCRIPTION	Q'TY
01	AVBC600-001	Hook	1
02	B015142	Socket head cap screw M16x160	1
03	AVBC600-003	Lower arm-right	1
04	AVBC600-004	Upper arm-in	1
05	AVBC600-005	Lower arm-in	2
06	AVBC600-006	Upper arm-out	2
07	AVBC600-007	Lower arm-left	1
08	B015141	Socket head cap screw M16x140	4
09	AVBC600-009	Lock base	1
10	B015035	Socket countersunk screw M6x20	4
11	AVBC600-011	Bushing	2
12	AVBC600-012	AW lock	1
13	B015139	Socket head cap screw M16x110	1
14	AVBC600-014	Washer 25*16*4	2
15	AVBC600-015	Horizontal bar	2
16	AVBC600-016	Washer 30*16.5*4	12
17	AVBC600-017	Gear-run	2

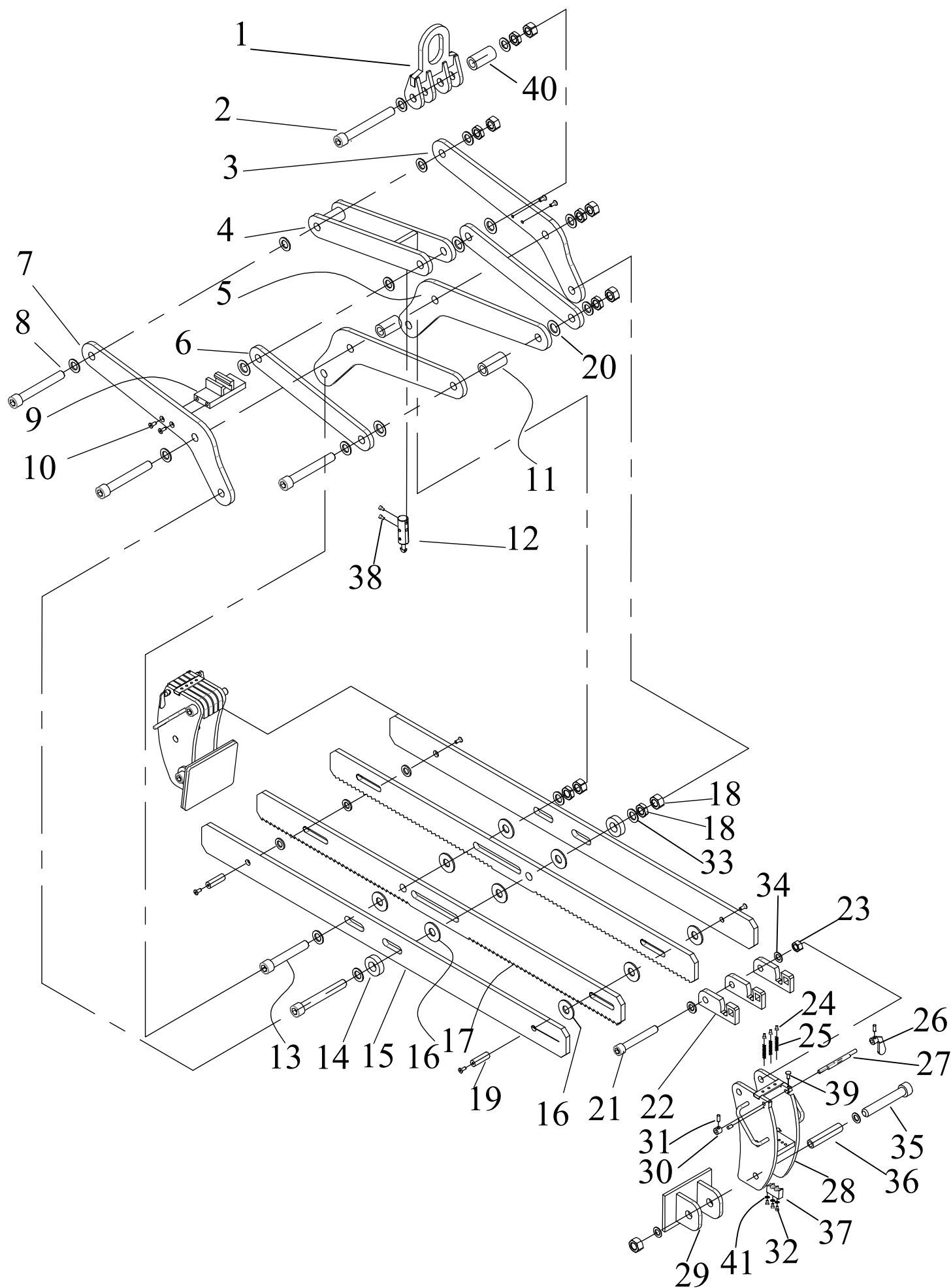


PARTS LIST

POS.	CODE	DESCRIPTION	Q'TY
18	T001039	Nut M16	16
19	AVBC600-019	Shaft 16	2
20	L006056	Washer brass f18	20
21	B015125	Socket head cap screw M12x100	2
22	AVBC600-022	Cam base	6
23	T001035	Torque Nut M12	2
24	B015073	Socket head cap screw M6x10	6
25	L004040	Spring	6
26	AVBC600-026	Cam	2
27	AVBC600-027	Cam lock	2
28	AVBC600-028	Clamp pad	2
29	AVBC600-029	Steel clamp	2
30	AVBC600-030	Cam nut	2
31	B015010	Socket screw cone point M4x10	6
32	B015093	Socket head cap screw M8x25	6
33	L006039	Round Washer M16	16
34	L006030	Round Washer M12	4
35	B015140	Socket head cap screw M16x120	2
36	AVBC600-036	Washer tube	2
37	AVBC600-037	Gear lock	2
38	B015098	Socket head cap screw M8x40	2
39	D026014	Screw M4x30	1
40	AVBC600-040	Bushing 2	1
41	L006005	Spring washer M8	6



DRAWING LIST





INSTRUCTIONS FOR USE

- Step 1:** Connect the Versa Block Clamp to a crane or hoisting equipment to start.
- Step 2:** Move the clamp to the material being lifted.
- Step 3:** Position of the clamp should be square with the block so that the load is balanced.
- Step 4:** Rotate the cam locking in anti-clockwise direction to slide the sliding pads of both sides, after that rotating the cam locking in reverse direction to the first locked position.
- Step 5:** Adjust gripping range of the clamp so that it is suitable for size of block to be picked up.
- Step 6:** Lower the lifter onto the load and make sure that the block is inserted to full depth into the clamping jaws of the clamp.
- Step 7:** Raise the hoist to allow the clamping jaws to close onto load. Then lift and move the block slowly to desired location.
- Step 8:** Place it down and the locking latch on the left upper arm will automatically lock the clamp and raise the hoist to remove the clamp out of the material.

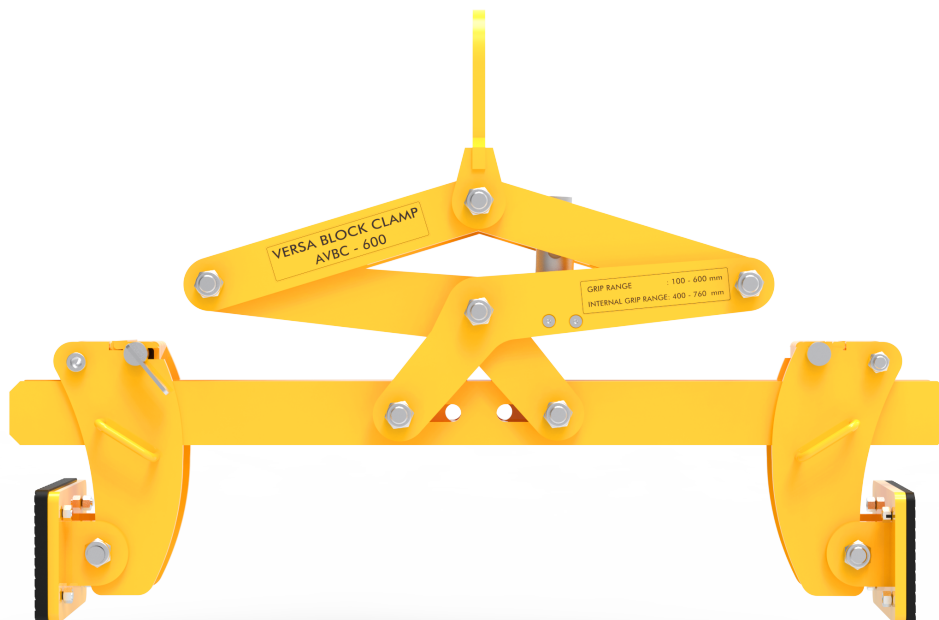
NOTE:

The way to lift the block from the inside surface: Rotate the cam locking in anti-clockwise direction to slide the sliding pads out of the clamp and reverse these sliding pads to clamp the block from the inside face.

CAUTION: The clamp is only allowed to lift one load at one time.

NOTE:

It is the responsibility of the user to adapt to state or local laws. The end user is responsible for using the equipment safely in the manner that it is designed for and within the rated capacity of the unit.





GENERAL SAFETY OPERATIONS

To ensure safety during operation, you must carefully read these instructions to avoid injury, death or damage while using the AVBC-600:

- Determine whether the capacity of a crane hook or forklift boom is suitable for use with the clamp.
- Determine the capacity of crane hook or hoisting equipment that is suitable for the maximum load weight plus clamp weight.
- Perform a load test for the clamp before handling the load.
- Carefully read the clamp manual before operating.
- Only competent and authorised personnel should be allowed to operate the clamp.
- Follow the safety regulations stipulated by local authorities.
- Ensure that the manual is available during operation.
- Always wear appropriate protective equipment like helmet, gloves, safety boots etc.
- Always check clamps. If clamp is worn or damaged, DO NOT use.
- Make sure that the clamping jaw surfaces are clean.
- Make sure that there are no obstructions during the working process.
- The load must not exceed the maximum allowable weight specified.
- The load must be a single block with a smooth or rough and non-porous surface.
- Size of the load must be within the gripping range specified from the manufacturer.
- The grip depends on friction so do not lift wet blocks as lifting wet blocks may cause the rubber pads to lose their grip. It must be checked that the rubber pads are free from dirt and grease.
- Do a risk assessment of the material that is being lifted. The load must be free of fractures and other defects that may cause the load to fall apart while being lifted.
- Connections or individual parts of hoisting accessories should never be able to loosen by themselves.
- Defective hoisting accessories should never be used.
- To avoid injury, no one should be allowed to stand under the load.
- Do not carry out any lifting operations if any issues are found.
- Never operate a clamp that is damaged, malfunctioning or missing parts.
- Never operate a clamp if the tables for load capacity or any other warnings are missing, obscure or unclear.
- All inspections and tests must be carried out before lifting.
- It is important to ensure that regular examinations and inspections of lifting gear are undertaken to ensure maintenance is kept, and to verify that the equipment can continue to be safely
- Lifting gear inspections must be undertaken on a regular basis, by a person with adequate training, knowledge, skills and expertise.



INSPECTIONS AND MAINTENANCE

There are two types of inspections - in-service and periodic.

In-service:

A visual inspection before each use. This implies that before each lift, the user has a good look over the lifting clamp to ensure that there is no significant damage or wear and that the working load limit tag or markings are fitted and legible. If any defects are noted, the lifting clamp should be withdrawn from service and inspected by a competent person who can decide whether to use, repair, or discard the lifting clamp.

Periodic:

The lifting clamps should be checked and tested every 12 months by a competent person who has been trained and can decide whether to use, repair, or discard the lifting clamp. These inspections must also be adequately documented and are mandatory in many countries.

Always use original spare parts when carrying out repairs or maintenance.

Declaration of conformity:

We declare that the lifter conforms with the following standards:

- The Machinery Directive 2006/42/EC
- Australian Standard 4991-2004.

Note: It is the responsibility of the user to adapt to state or local laws. The end user is responsible for using the equipment safely in the manner it is designed for and within the unit's rated capacity.



WARRANTY

During delivery, it is necessary to check that the clamp has not been damaged during shipment. Any claims must be presented within 8 (eight) days of the product's delivery date.

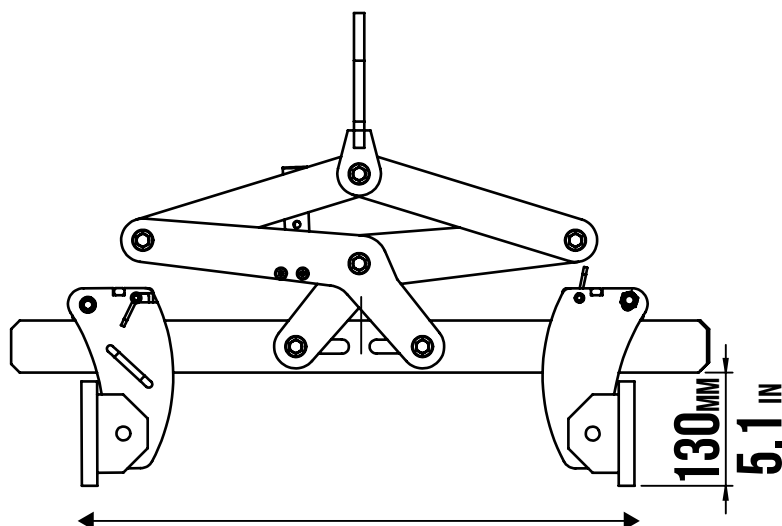
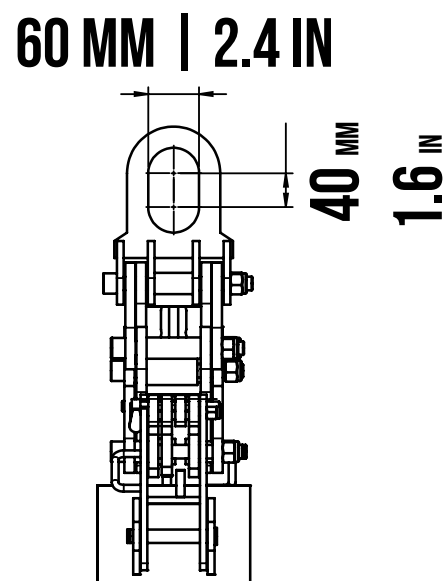
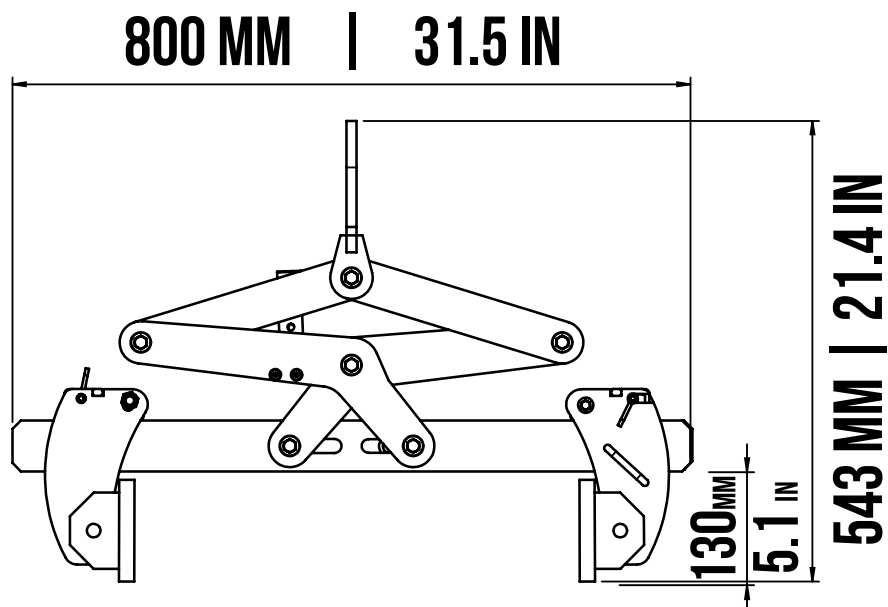
We grant you 12-months warranty on the Versa Block Clamp, counted from the date of purchase.

The warranty coverage is not applicable if:

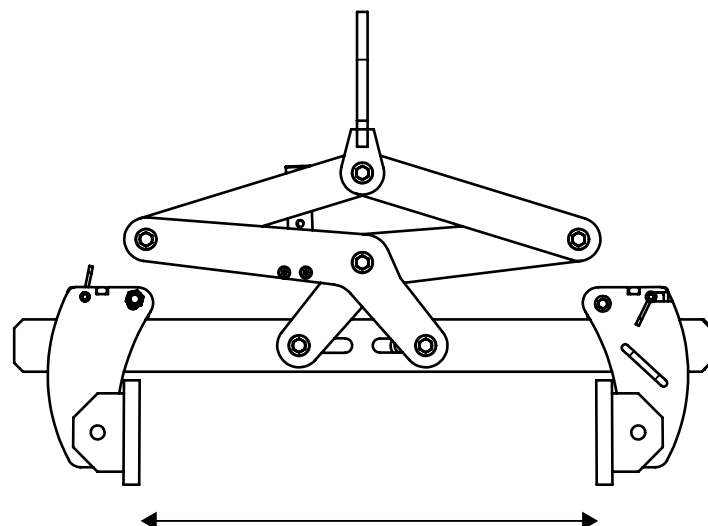
- The lifter is mishandled during maneuvering.
- The operator fails to comply with the instructions in this booklet.
- The lifter's maximum permissible capacity is exceeded.
- The specifications for slab thickness are not followed.
- Damages are due to inadequate maintenance and inspections.
- Damage is due to improper storage.
- The user performed repairs without our permission.
- Non-original spare parts were used.



DIMENSIONS



INTERNAL GRIP RANGE 400-760 MM
15.7 - 29.9 IN



GRIP RANGE 100-600 MM
3.9 - 23.6 IN



AUSTRALIA

1/5 Stanton Road, Seven Hills NSW 2147

Tel: 02 9838 8427

www.aardwolfaustralia.com Email: enquiries@aardwolfaustralia.com

BULGARIA

Str. Usta Kolio Ficheto 33

Tel: +359 887 933 754

Email: adrian@toolrange.com

INDIA

Harmara Road, Industrial Area, Madanganj, Kishangarh, District- Ajmer, Rajasthan India 305801

Tel: +91 73000 68444

Web: www.aardwolf.co.in

Email: sales@aardwolf.co.in

GERMANY

Schulze-Delitzsch-Weg 2, 33175 Bad Lippspringe

Tel: 05252 8382830

Email: sales@aardwolf.com.de

USA

9401 Norwalk Blvd, Santa Fe Springs, CA 90760

Tel: (562) 553-6050

Web: www.aardwolfusa.com

Email: sales@aardwolfusa.com

VIETNAM

1B, An Phu, Thuan An City, Binh Duong Province, Vietnam

Tel: +84 931 707 793

Web: www.aardwolf.com.au

Email: info@aardwolf.com.au



AARDWOLF PRODUCT VIDEO

www.youtube.com/user/AardwolfGroup

