



OWNER'S MANUAL



NO ONE LIFTS LIKE US

SCISSOR CLAMP LIFTER

ASL200



PRODUCT FEATURES

The Aardwolf Scissor Clamp Lifter has a rubber contact pad to handle materials safely. The clamp automatically grips and releases the materials using a gravity-controlled locking latch.

Suitable for lifting marble and granite slabs, tombstones, concrete barriers, curbs (kerbs), and median walls.

- Auto locks and unlocks.
- Long-lasting, high friction replaceable rubber pads.
- Protective rubber-lined bar prevents the material from chipping.
- Powdered coated in high visibility safety yellow paint.

OCTOBER, 2023



SPECIFICATIONS

ASL200	METRIC	IMPERIAL
Grip range	50 - 200 mm	2 - 8 in
Working load limit	1500 kg	3307 lb
Net weight	47 kg	104 lb
Gross weight	50 kg	110 lb
Packaging dimensions	820 x 230 x 450 mm	32.3 x 9.1 x 17.7 in



PARTS LIST

POS.	CODE	DESCRIPTION	Q'TY
01	P001019	External Circlip Ø20	02
02	L006057	Brass Washer Ø20.5	10
03	ASL200-003	Sleeving_1	01
04	ASL200-004	Jaw Bracket_1	01
05	T001018	Nut M10	08
06	L006025	Plain Washer M10	08
07	ASL200-007	Pin_1	01
08	ASL105-008	Jaw Rubber	02
09	T001039	Nut M16	05
10	ASL200-010	Lower Arm_1	01
11	ASL200-011	Sleeving_2	02
12	C002035	Limit Rubber	01
13	ASL200-013	Cross Bar	01
14	B015044	Hex. Socket Countersunk M8x50	04
15	ASL200-015	Locking Base_1	01
16	L001004	Pop Rivet Ø3.2	02
17	T004033	Label	01

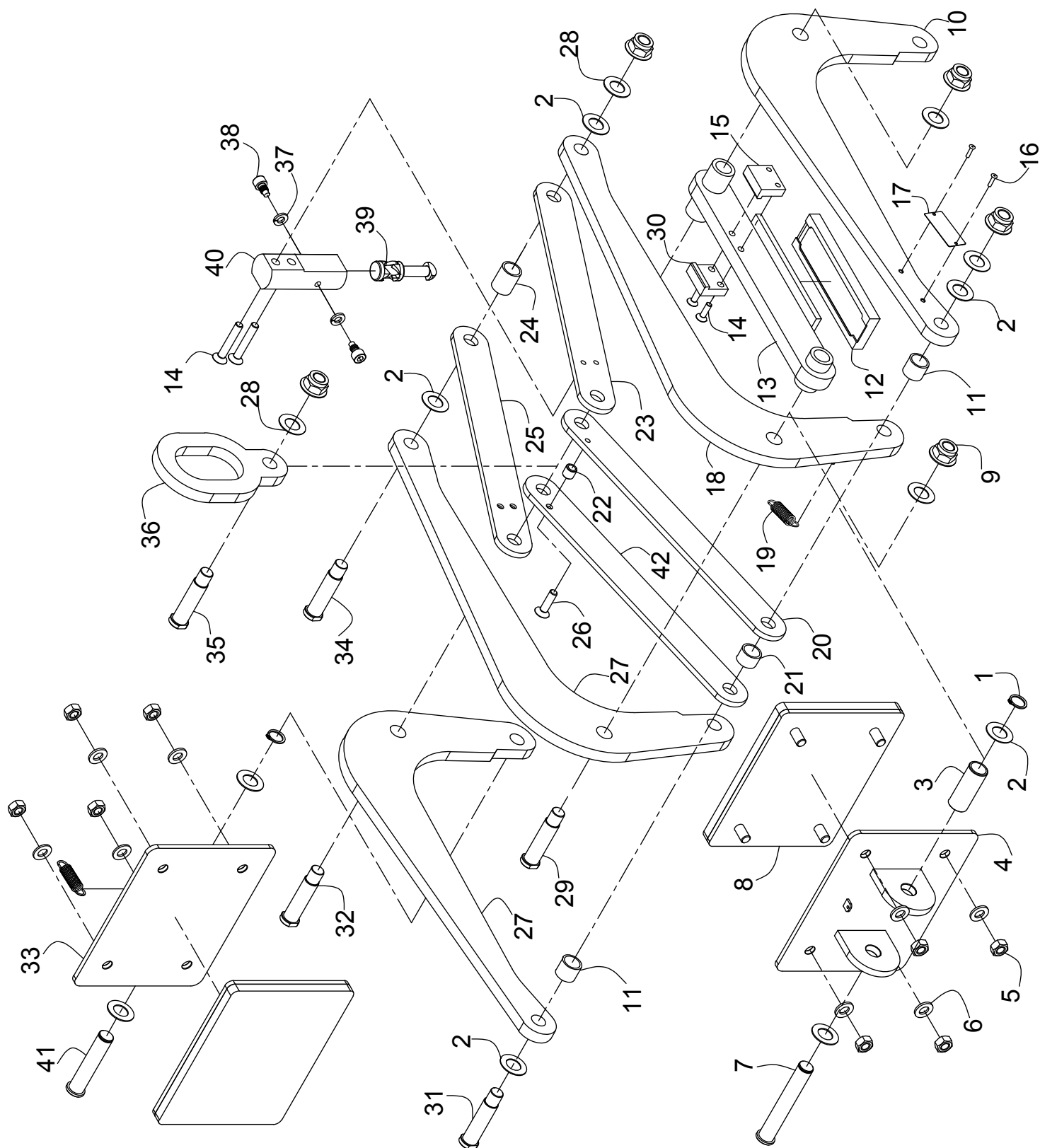


PARTS LIST

POS.	CODE	DESCRIPTION	Q'TY
18	ASL200-018	Lower Arm_2	01
19	L004055	Jaw Spring	02
20	ASL200-020	Upper Arm_1	01
21	ASL200-021	Sleeving_3	01
22	ASL200-022	Sleeving_4	01
23	ASL200-023	Upper Arm_2	01
24	ASL200-024	Sleeving_5	01
25	ASL200-025	Upper Arm_3	01
26	B015043	Hex. Socket Countersunk M8x40	01
27	ASL200-027	Lower Arm_3	02
28	L006036	Plain Washer M16	05
29	ASL200-029	Pin_2	01
30	ASL200-030	Locking Base_2	01
31	ASL200-031	Pin_3	01
32	ASL200-032	Pin_4	01
33	ASL200-033	Jaw Bracket_2	01
34	ASL200-034	Pin_5	01
35	ASL200-035	Pin_6	01
36	ASL200-036	Hook	01
37	L006005	Spring Washer M8	02
38	B015092	Socket Head Cap Screw M8x20	02
39	ASL125-032	Locking Pin	01
40	ASL200-040	Locking Body	01
41	ASL200-041	Pin_7	01
42	ASL200-042	Upper Arm_4	01



DRAWING LIST





INSTRUCTIONS FOR USE

Important: Carefully read the General Safety Operations supplied with the lifting clamp.

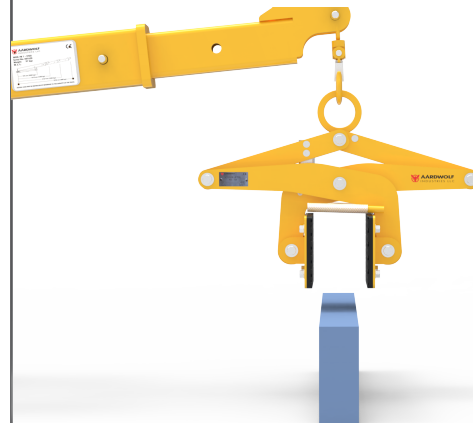
1

Connect the Scissor Clamp Lifter to the lifting equipment for ready working.



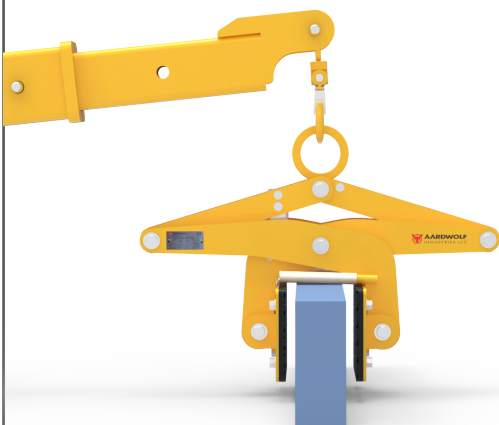
2

Move the Scissor Clamp Lifter to the load to be lifted.



3

Put the Scissor Clamp Lifter onto the load so that the lifter is placed squarely and in the center of the load balanced.



4

Lift the load slowly to the desired position.



5

Lower the load slowly and take the lifter out of the load.



When the lifter raises the load, the auto-locking latch will automatically grip and release the load.





GENERAL SAFETY OPERATIONS

- Carefully consider all safety regulations and existing standards and codes in your country for hoisting operations.
- Permission to work with the Scissor Lifter should only be given to suitably trained, competent, and acquainted with this operating manual and safety regulations.
- Inspect clamp. If the clamp is worn or damaged, do not use it.
- Select the proper size clamp for the job. Determine the weight of the slab to be lifted. Do not exceed the working load limit shown on the clamp. Slab thickness must be within the grip range specified by the manufacturer.
- Do a risk assessment of the material that is being lifted.
- The slab must be free of fractures and other defects that may cause the slabs to fall apart while being lifted.
- All personnel must stand clear of the load while it is lifted or moved.
- The grip depends on friction. Check that the rubber pads are free from dirt, grease, and other substances that may reduce their effectiveness.
- Do not lift wet slabs. The grip depends on friction. Lifting wet slabs may cause the rubber pads to lose their grip.
- Loads of more than one piece should only be lifted if they are tightly combined into one unit.
- Position the clamp so that it is square with the slab to be lifted and in the center of the slab to balance the load.
- Ensure that the slab is inserted to the full depth into the opening of the clamp.
- Take up the slab slowly. A trial tensioning of load will usually indicate proper balance.
- Do not lower the clamp onto other slabs or material while lowering the slab into racks, as the clamp will release its load.
- **Important!** To protect people from getting injured, it is important to follow some general safety directions while using hoisting accessories.
- Read the operation manual carefully before you use hoisting accessories.
- Make sure that the operation manual is always available at the place where the hoisting accessories are used.
- Give permission to work with hoisting accessories only to suitably trained and competent people.
- Wear safety equipment, like helmets, gloves, and safety boots.
- Never leave a lifted load unsupervised.



GENERAL SAFETY OPERATIONS

- Lift a load only as much as is really necessary.
- Do not get underneath the load, and do not permit others to do so.
- Connections or individual parts of hoisting accessories should never be able to loosen by themselves.
- Hoisting accessories must be stored where they are protected against weather conditions and aggressive substances.
- Defect hoisting accessories are no longer to be used.
- Repairs and checks are to be made only by qualified people.
- It is important to ensure that regular examinations and inspections of lifting gear are undertaken to ensure maintenance is kept and to verify that the equipment can continue to be safely used.
- Lifting gear inspections must be undertaken regularly by a person with adequate training, - knowledge, skills, and expertise.



INSPECTIONS AND MAINTENANCE

There are two types of inspections - in-service and periodic.

In-service:

A visual inspection before each use. This implies that before each lift, the user has a good look over the lifting clamp to ensure that there is no significant damage or wear and that the working load limit tag or markings are fitted and legible. If any defects are noted, the lifting clamp should be withdrawn from service and inspected by a competent person who can decide whether to use, repair, or discard the lifting clamp.

Periodic:

The lifting clamps should be checked and tested every 12 months by a competent person who has been trained and can decide whether to use, repair, or discard the lifting clamp. These inspections must also be adequately documented and are mandatory in many countries.

Always use original spare parts when carrying out repairs or maintenance.

Declaration of conformity:

We declare that the lifter conforms with the following standards:

- The Machinery Directive 2006/42/EC
- Australian Standard 4991-2004.

Note: It is the responsibility of the user to adapt to state or local laws. The end user is responsible for using the equipment safely in the manner it is designed for and within the unit's rated capacity.



WARRANTY

During delivery, it is necessary to check that the clamp has not been damaged during shipment. Any claims must be presented within 8 (eight) days of the product's delivery date.

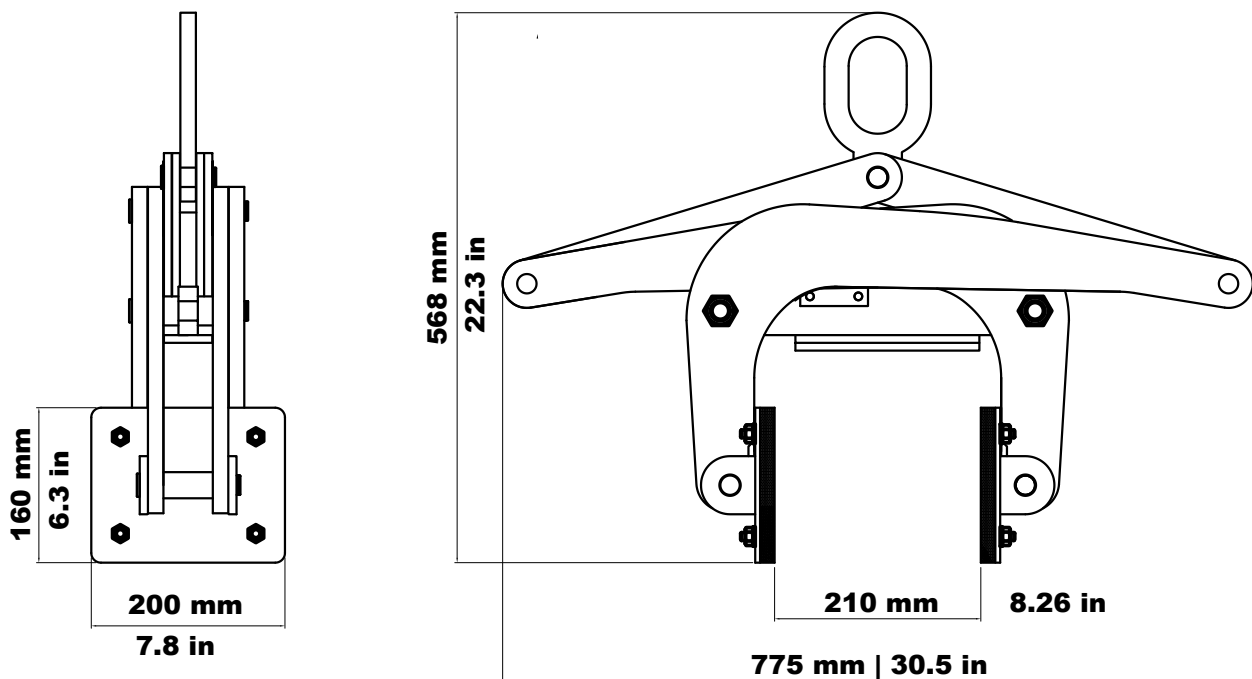
We grant you 12-months warranty on the Aardwolf Scissor Lifter, counted from the date of purchase.

The warranty coverage is not applicable if:

- The lifter is mishandled during maneuvering.
- The operator fails to comply with the instructions in this booklet.
- The lifter's maximum permissible capacity is exceeded.
- The specifications for slab thickness are not followed.
- Damages are due to inadequate maintenance and inspections.
- Damage is due to improper storage.
- The user performed repairs without our permission.
- Non-original spare parts were used.



DIMENSIONS



AUSTRALIA

1/5 Stanton Road, Seven Hills NSW 2147

Tel: 02 9838 8427

www.aardwolfaustralia.com Email: enquiries@aardwolfaustralia.com

BULGARIA

Str. Usta Kolio Ficheto 33

Tel: +359 887 933 754

Email: adrian@toolrange.com

INDIA

Harmara Road, Industrial Area, Madanganj, Kishangarh, District- Ajmer, Rajasthan India 305801

Tel: +91 73000 68444

Web: www.aardwolf.co.in

Email: sales@aardwolf.co.in

GERMANY

Schulze-Delitzsch-Weg 2, 33175 Bad Lippspringe

Tel: 05252 8382830

Email: sales@toolrange.com.de

USA

9401 Norwalk Blvd, Santa Fe Springs, CA 90670

Tel: (562) 553-6050

Web: www.aardwolfusa.com

Email: sales@aardwolfusa.com

VIETNAM

1B, An Phu, Thuan An City, Binh Duong Province, Vietnam

Tel: +84 931 707 793

Web: www.aardwolf.com.au

Email: contact@aardwolf.com.au



AARDWOLF PRODUCT VIDEO

www.youtube.com/user/AardwolfGroup

