



AARDWOLF INDUSTRIES LLC

OWNER'S MANUAL



STONE KERB CLAMP

Tools & Equipment for the Stone,
Glass and Construction Industries

Product Code
ASKC200



www.aardwolf.com.au

When damages are due to inadequate maintenance and inspections.

When damage is due to improper storage.

Whenever repairs were performed by the user without our permission.

Whenever non-original spare parts were used.

6.2 Disclaimer

Aardwolf Industries LLC's warranty does not cover the incorrect assembly and misuse of handler, the lack of maintenance and repair of clamp, the operation by non-competent or non-permission user or non-original spare parts used or installed.

5 MAINTENANCE AND REPAIR

The procedures of maintenance and repair should be established as mandatory regulations and policies. They vary depending on the amount and purpose of use, the buyer's own policy. As normal, it should include the frequency of inspection, the policy of defects found and repair and the policy of record filing.

CE - DECLARATION OF CONFORMITY

We declare that the product is in conformity with the following standard: The Machinery Directive 2006/42/EC.

NOTE: It is the responsibility of the user to adapt to state or local laws. The end user is responsible to use the equipment safely in a manner that it is designed for and within the rated capacity of the unit.

6 DISCLAIMER AND WARRANTY

6.1 Warranty

After receiving the goods, it is strongly recommended to the buyer to check for sure, based on the spare part list and spare drawing attached with the goods, that the spare parts has not been damaged or lost during shipment. Any damages or losses must be officially claimed to Aardwolf Industries LLC's within 8 days since the date of goods receipts.

This lifter is granted a 12-month warranty based on Aardwolf Industries LLC's warranty policy since the date of purchase.

The warranty coverage is not applicable.....

Whenever the clamp is handled incorrectly during manoeuvring.
Whenever the operator fails to comply with the instructions in this booklet.

Whenever the maximum permissible capacity of clamp is exceeded.

Whenever the specifications for stone thickness are not followed.

CONTENTS

1. Description	1
2. Specifications	1
2.1 Features	1
2.2 Specifications	1
3. Instructions.....	2
3.1 Instructions for Safety	2
3.2 Instruction for Use	3
4. Part drawing and Spare part list	4
4.1 Part drawing	4
4.2 Spare part list	5
5. Maintenance and Repair	7
6. Disclaimer and Warranty	7
6.1 Warranty	7
6.2 Disclaimer	8

1 DESCRIPTION

This two man block clamp is suitable for a large range of handling applications such as lifting/handling concrete and granite kerb stone as used in road construction or for heavy building blocks.

The center chain can be attached to a hoist or crane for heavier lifting.

2 SPECIFICATION

2.1 Features

Powder coated frame to resist corrosion and rust.

Tilting pads ensure maximum grip.

2.2 Specification

Product code	ASKC200
Working load limit	200kg
Grip range	0 - 260 mm
Net weight	23kg
Packaging dimension	880x530x200mm

STONE KERB CLAMP

Model: AKSC200

SPARE PART LIST

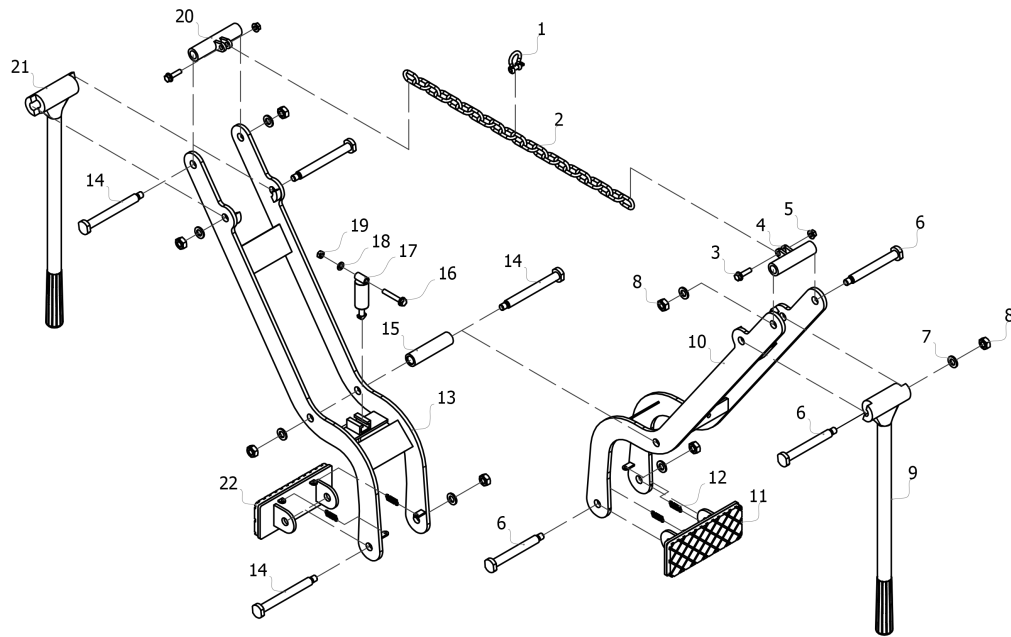
PARTS LIST			
No.	Code	Part Number	Qty.
1	ASKC200 - 01	Shackle	01
2	ASKC200 - 02	Chain Ø6 x 630	01
3	ASKC200 - 03	Bolt M8 x 30	02
4	ASKC200 - 04	Hook 108	01
5	ASKC200 - 05	Nut M8	02
6	ASKC200 - 06	Shaft Ø16 x 124	03
7	ASKC200 - 07	Washer M12	07
8	ASKC200 - 08	Nut M12	07
9	ASKC200 - 09	Handle Bar 100	01
10	ASKC200 - 10	Jaw Inside	01
11	ASKC200 - 11	Grip Cheek 108	01
12	ASKC200 - 12	Spring	04
13	ASKC200 - 13	Jaw Outside	01
14	ASKC200 - 14	Shaft Ø16 x 140	04
15	ASKC200 - 15	Pipe Ø27 x 3 x 100	01
16	ASKC200 - 16	Bolt M8 x 50	01
17	ASKC200 - 17	Lock	01
18	ASKC200 - 18	Washer M8	01
19	ASKC200 - 19	Nut M8	01
20	ASKC200 - 20	Hook 124	01
21	ASKC200 - 21	Handle Bar 124	01
22	ASKC200 - 22	Grip Cheek 124	01

4.2 Spare part list

STONE KERB CLAMP

Model: AKSC200

ASSEMBLY DIAGRAM



3 INSTRUCTION

3.1 Instructions for Safety

1. Carefully observe all existing safety regulations and standards in your country for hoisting operations.
2. The clamp operation must be taken by an authorized and competent person who is well trained and acquainted with the manual and safety regulations of hoisting operations.
3. Well inspect the clamp. If any parts are worn or damaged, do not use.
4. Determine the weight of load. Do not exceed W.L.L of the clamp as shown on clamp. Kerb stone thickness must be within a grip range specified by the manufacturer.
5. Do a risk assessment of material that is being lifted. Concrete or kerb stone must be free of fracture and other defects that may cause the stone to fall apart as being lifted.
6. All personnel must stand clear of the load as it is being lifted or transported.
7. The grip depends on friction. Inspect that the rubber pads are free from dirt, grease and other substances that may reduce the effectiveness.
8. Do not lift wet stone. Lifting wet stone may cause the rubber pads to lose the grip.
9. Position the clamp so that they are square with the stone to be lifted and in the center of stone so that it is balanced.
10. Make sure that the stone is inserted into the full depth of clamp opening.
11. A lift trial is strongly recommended. It should be slowly lifted to ensure its balance.
12. Make sure that the manual is always available at the place where the hoisting attachments are used.

13. Read the manual attentively prior to operation.

14. Wear proper safety clothing.

3.2 Instruction for Use

- **Attach the clamp to a hoist or crane for heavier lifting**

The working load limit of clamp is up to 200 kg. It is strongly recommended for the operator to employ a hoist or crane to lift or transport the load using the clamp for their back protection in case the operator would like to lift or transport the load with the capacity that is up to 200 kg.

It is also recommend for the operator to employ a firm shackle with the capacity of over 200 kg to attach the clamp to the hoist or crane.

- **Attach the kerb stone to the clamp**

The clamp is equipped with a manual locking latch that allows the operator to release the rubber pads.

Check the weight and width of stone so that they does not exceed the specification of clamp.

Lightly lower down and adjust the clamp to the kerb stone in a way that the stone is fully inserted into the pads.

Carefully check gravity center of stone to prevent the stone from being lifted out of balance.

Manually release the locking latch so that the pads grip the stone as it is being lifted.

Using two handle bars by two operators or attach the clamps to a hoist or crane.

Lightly move the stone to the expected place.

4 PART DRAWING AND SPARE PART LIST

4.1 Part drawing

