

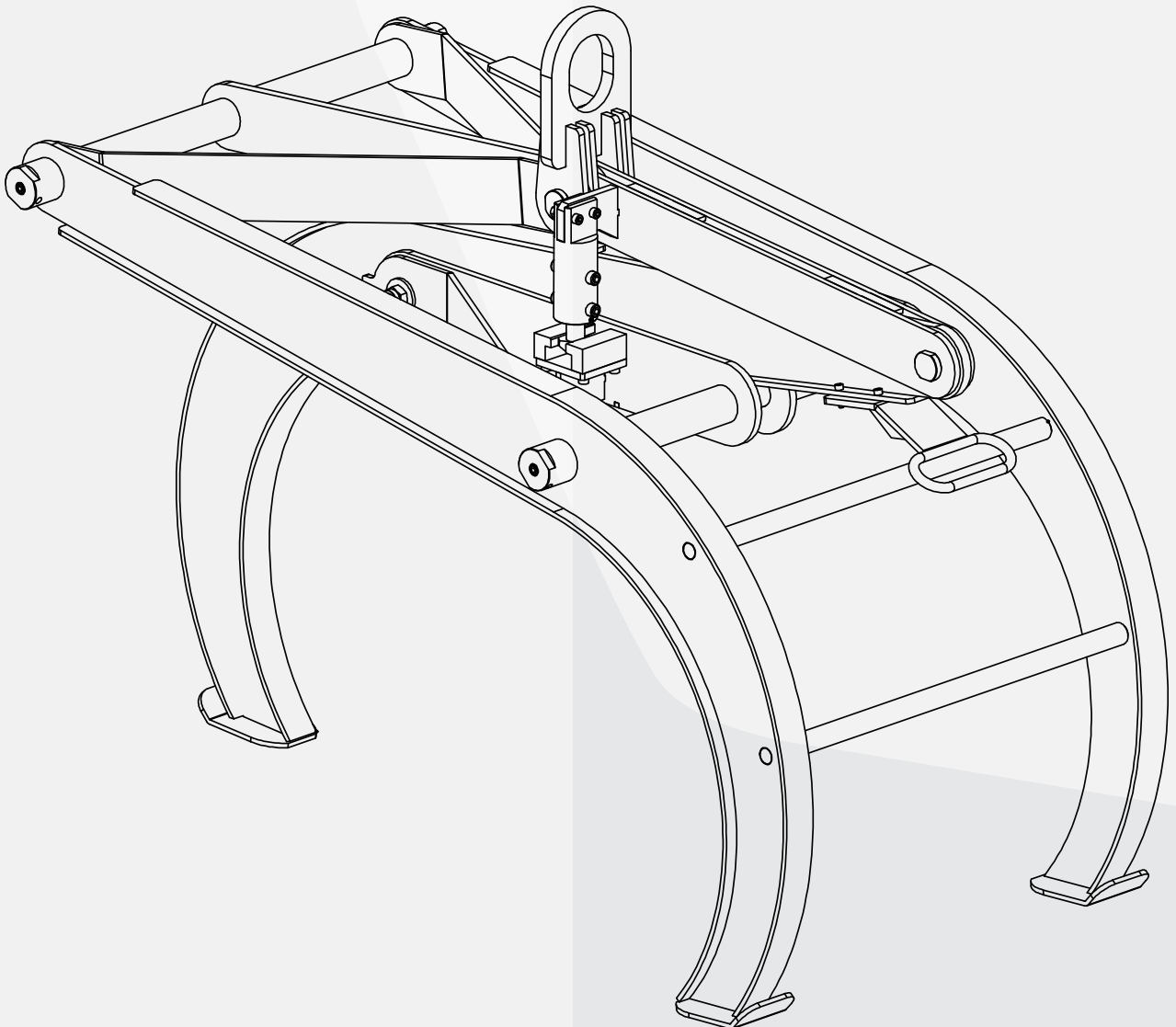


OWNER'S MANUAL

AARDWOLF

ROCK LIFTER GRAPPLE

ARL-1200



The Rock Lifter Grapple is an attachment that makes moving and setting large rocks and boulders a snap. Designed for the landscape contractor, stonemason, or anyone else who works regularly with rocks and boulders. The Rock Lifter Grapple is an efficient solution to work faster, better and with less labor.

GENERAL SAFETY OPERATIONS

The user's manual for the Rock Lifter Grapple must always be available at the operation site. The instructions mentioned in this manual must strictly adhere. Furthermore, supplementary to the instruction manual must enforce the statutory regulations governing general accident prevention and environmental protection.

Before starting, the operating and maintenance personnel must have read and understood the operator's manual, particularly the safety instructions, before starting work. Protective equipment must be made available for operating and maintenance personnel and worn at all times. The user or his representative is responsible for supervising operating personnel and ensuring they know the hazards and safety implications of working with the Rock Lifter Grapple.

The user must only operate equipment on a level, clean, and in a location that will allow the user to stay in a safe position, not under or near the load on the clamp. The operator uses a place that will not be hazardous to the operator or present dangerous conditions from a place that will not be hazardous to the operator or current complex conditions.

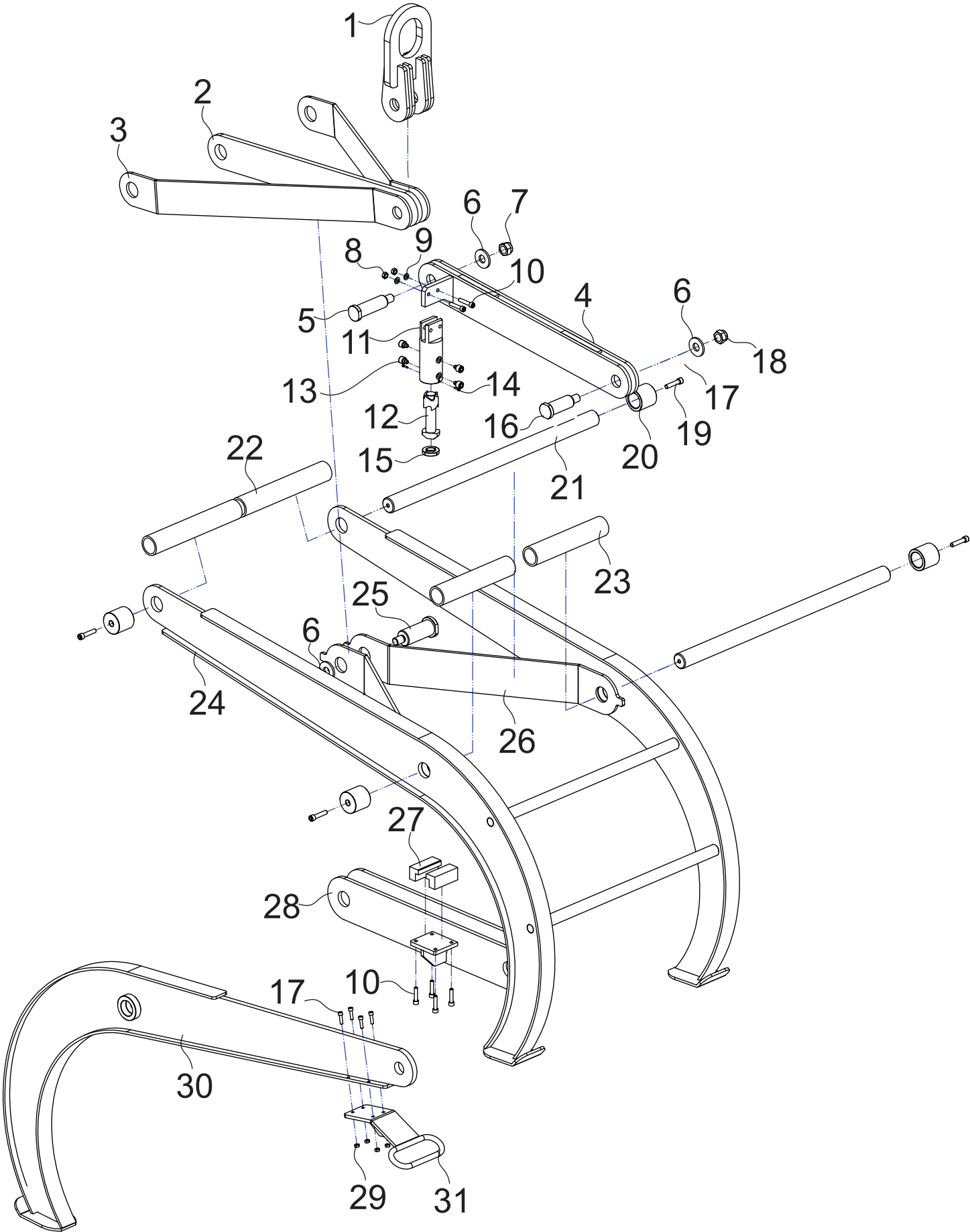
The Rock Lifter Grapple from Aardwolf is designed to reduce risks during the lifting process. Operators must adhere to the safety guidances listed below:

- Carefully observe all existing safety regulations and standards in your country for hoisting operations.
- The clamp operation must be taken by an authorized and competent person who is well trained and acquainted with the manual and safety regulations of hosting operations.
- Well inspect the clamp. If any parts are worn or damaged, do not use.
- Determine the weight of load. Do not exceed W.L.L of the clamp as shown on clamp. Rocks and boulders thickness must be within a grip range specified by the manufacturer.
- Do a risk assessment of material that is being lifted. Large rock/boulder must be free of fracture and other defects that may cause the stone to fall apart as being lifted.
- All personnel must stand clear of the load as it is being lifted or transported.
- Do not lift a wet large rock/boulder

- Only one load can be lifted at a time.
- Position the clamp so that it is square with the large rock/boulder to be lifted, and in the center of the large rock/boulder so that the load is balanced.
- Make sure that the large rock/boulder is inserted into the jaws of the clamp.
- Take up a large rock/boulder slowly. A trial tensioning of the load will usually indicate proper balance.
- Make sure that the manual is always available at the place where the hoisting attachments are used.
- Read the manual attentively prior to operate.
- Wear proper safety clothing
- It is important to ensure that regular examinations and inspections of lifting gear are undertaken to ensure maintenance is kept, and to verify that the equipment can continue to be safely used.
- Lifting gear inspections must be undertaken on a regular basis, by a person with adequate training, knowledge, skills and expertise.



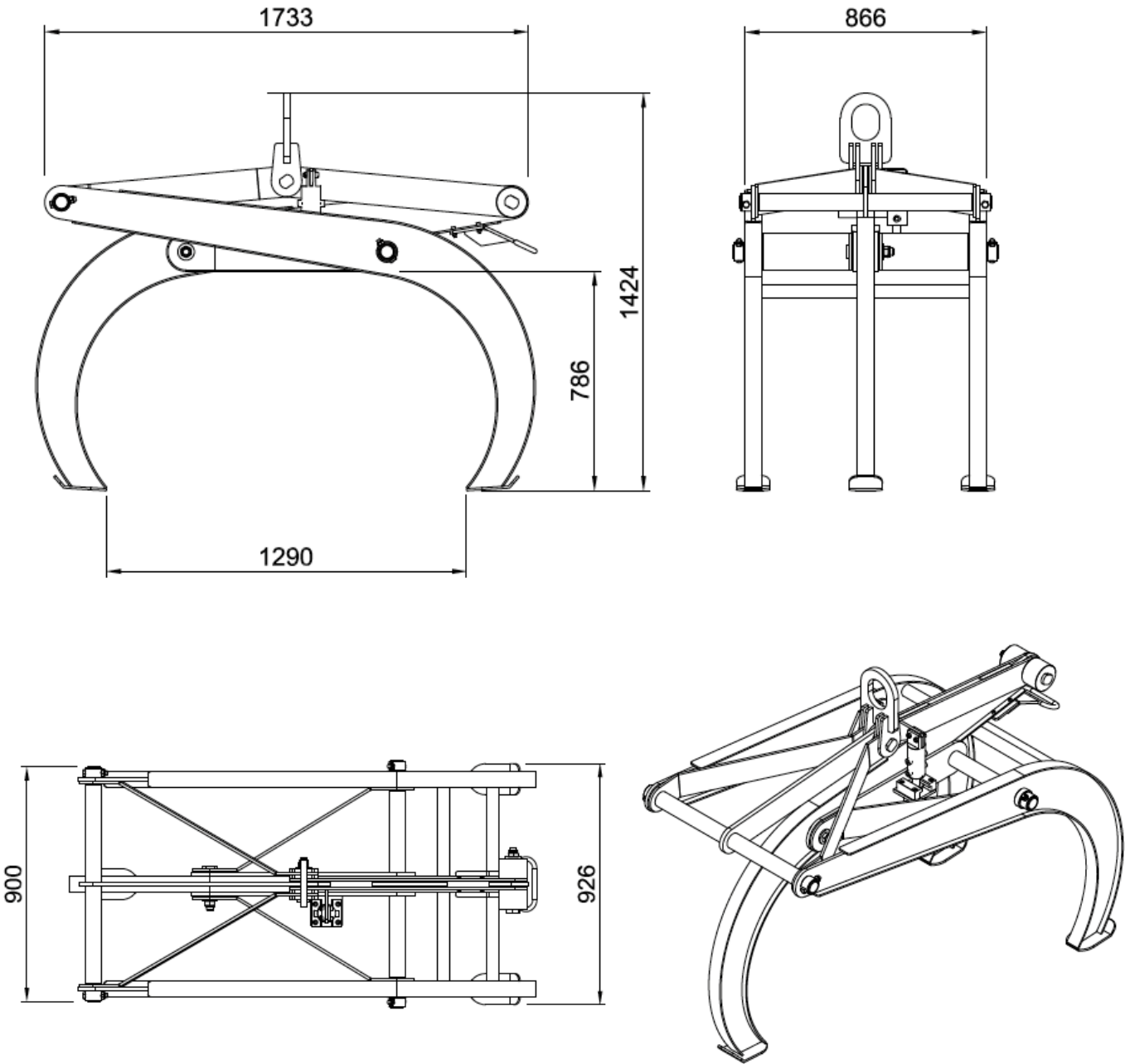
DRAWING LIST



PARTS LIST

POS.	CODE	DESCRIPTION	Q'TY
1	ARL1200-001	Hook	1
2	ARL1200-002	Base Beam	1
3	ARL1200-003	Top Arm	2
4	ARL1200-004	Double Top Arm	1
5	ARL1200-005	Pin A	1
6	ARL1200-006	Washers Ø26	3
7	T001041	Nylon Nut M24	3
8	T001034	Nylon Nut M10	2
9	L006026	Washers M10	2
10	B015117	Hexagon Socket Head Bolts M10x45	2
11	ARL1200-011	Auto Lock Cover	1
12	ARL1200-012	Auto Lock	1
13	ARL1200-013	Special Nut M14	4
14	B015058	Hexagon Socket Head Bolts M4x16	2
15	ARL1200-015	Head Cover	2
16	ARL1200-016	Pin B	1
17	B015096	Hexagon Socket Head Bolts M8x30	4
18	T001041	Nylon Nut M24	1
19	B015124	Hexagon Socket Head Bolts M12x55	4
20	ARL1200-020	Pipe Thread	4
21	ARL1200-021	Shaft	2
22	ARL1200-022	Pipe A	2
23	ARL1200-023	Pipe B	2
24	ARL1200-024	Double Arm	1
25	ARL1200-025	Pin C	1
26	ARL1200-026	Base Pad	2
27	ARL1200-027	Lock Stop	2
28	ARL1200-028	Single Top Arm	1
29	T001032	Nylon Nut M8	4
30	ARL1200-030	Single Arm	1
31	ARL1200-031	Handle	1

DIMENSIONS



SPECIFICATIONS

ARL-1200	Metric	Imperial
Grip range	600 - 1200 mm	23.6 - 47.2 in
Working load limit	1500 kg	3307 lb
Net weight	354 kg	780 lb
Gross weight	372 kg	820 lb
Packaging dimensions	1850 x 950 x 1500 mm	73 x 37 x 59 in

FEATURES

- High tensile steel welded construction.
- Simple and reliable operation with minimal maintenance.
- A safer and easy way to move large rocks.
- Suitable for handling boulders and stones of almost all shapes.
- The greater the weight the harder the grip of the tongs.
- An actuator allows the clamp to grab and release automatically during each cycle.

INSTRUCTIONS FOR USE

- **Step 1:** Connect the Rock Lifter Grapple to a mobi-crane to start with.
- **Step 2:** Place the lifter onto the rock and make sure that the rock is inserted to the full depth into the opening of the lifter. The load must be balanced before operating the rock.
- **Step 3:** Lift the rock to the desired position.
- **Step 4:** Lower the rock slowly.

NOTE: Warning! Before lowering the load make sure that there are no obstructions that the load or the clamp could unintentionally rest on.

- **Step 5:** The gripping action occurs automatically with each lifting cycle.

INSPECTIONS AND MAINTENANCE

There are two types of inspections - in-service and periodic.

In-service:

A visual inspection prior to each use. This implies that prior to each lift, the user has a good look over the lifting clamp to ensure that there is no significant damage or wear, and that the working load limit tag or markings are fitted and limit legible. At this point, if any defects are noted, the lifting clamp should be withdrawn from service, and inspected by a competent person who can make a decision on whether to use, repair or discard the lifting clamp.

Periodic:

The Rock Lifter should be checked and tested every 12 months by a competent person who has been trained and who can make a decision on whether to use, repair or discard the lifting clamp. These inspections also need to be adequately documented and are mandatory in many countries. Always use original spare parts when carrying out repairs or maintenance.

CE – Declaration of conformity:

we declare that the lifter is in conformity with the following standard: The Machinery Directive 2006/42/EC.

Note: It is the responsibility of the user to adapt to state or local laws. The end user is responsible for using the equipment safely in the manner it is designed for and within the rated capacity of the unit.

WARRANTY

At the time of delivery it is necessary to check that the lifter has not been damaged during shipment. Any claims must be presented within eight days of the date of delivery of the product.

We grant you 12 months warranty on the Rock Lifter, counted from the date of purchase.

The warranty coverage is not applicable if:

- The lifter is handled incorrectly during maneuvering.
- The user fails to comply with the instructions in this booklet.
- The lifter's maximum permissible capacity is exceeded.
- The specifications for stone thickness are not followed.
- Damages are due to inadequate maintenance and inspections.
- Damage is due to improper storage.
- Repairs were performed by the user without our permission.
- Unofficial spare parts were used.



WE ARE PROVIDING

SIMPLE, REALIABLE, COST SAVING
AND **AWESOME IDEAS** FOR YOUR BUSINESS



AARDWOLF PRODUCT VIDEO
www.youtube.com/user/AardwolfGroup



FIND THE AARDWOLF SERVICE CENTRE NEAR YOU

AUSTRALIA

1/5 Stanton Road, Seven Hills NSW 2147

Tel: 02 9838 8427

Web: www.aardwolfaustralia.com **Email:** enquiries@aardwolfaustralia.com

BULGARIA Str.Usta Kolio Ficheto 33 **Tel:** +359 887 933 754

INDIA

Harmara Road, Industrial Area, Madanganj, Kishangarh, District- Ajmer,
Rajasthan India 305801

Web: www.aardwolf.co.in

Tel: +91 73000 68444

Email: sales@aardwolf.co.in

GERMANY

Schulze-Delitzsch-Weg 2, 33175 Bad Lippspringe

Tel: 05252 8382830

Email: sales@toolrange.com.de

USA

9401 Norwalk Blvd, Santa Fe Springs, CA 90670

Tel: (562) 553-6050

Web: www.aardwolfusa.com

Email: sales@aardwolfusa.com

VIETNAM

1B, An Phu, Thuan An City, Binh Duong Province, Vietnam

Tel: +84 931 707 793

Web: www.aardwolf.com.au

Email: info@aardwolf.com.au