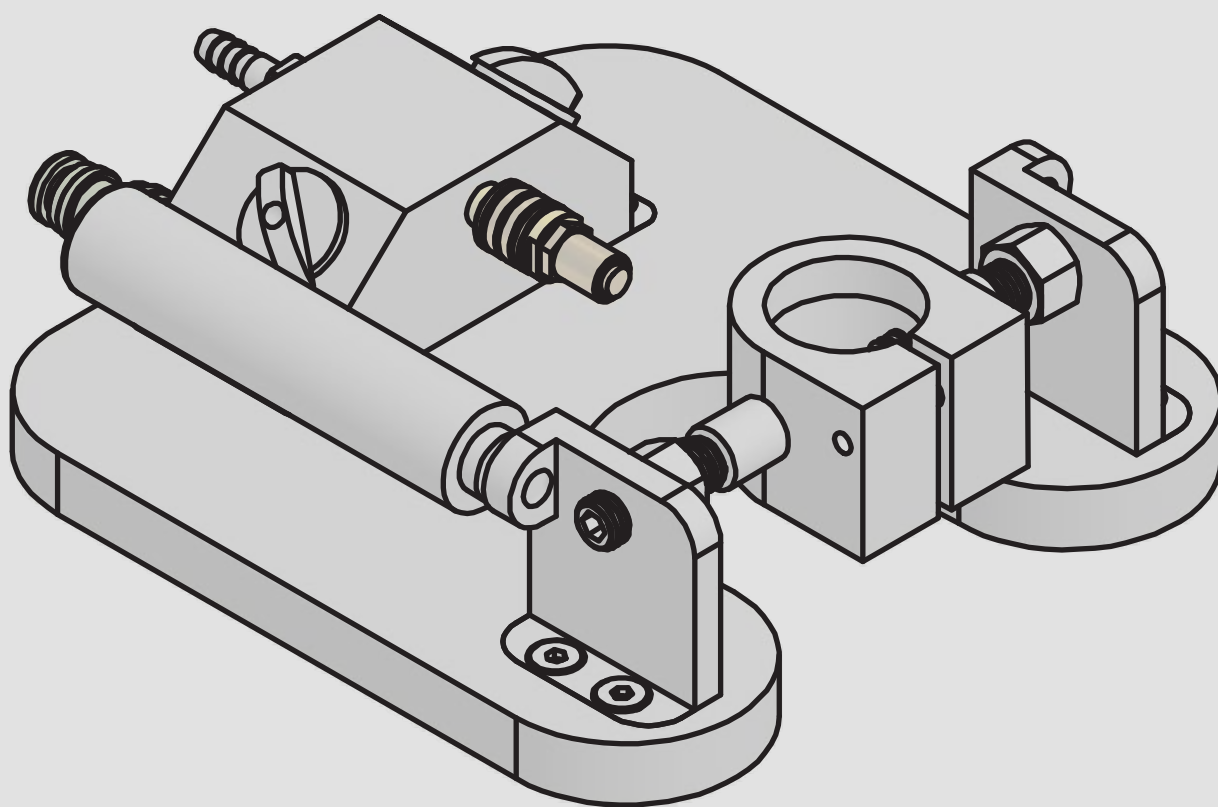


# PNEUMATIC ANCHOR MACHINE

**APAM**



**CREATED BY**

**AARDWOLF INDUSTRIES**  
*Marketing Department*

Published on:  
**January 2025**

Contact us: [info@aardwolf.com.au](mailto:info@aardwolf.com.au)  
[www.aardwolf.com.au](http://www.aardwolf.com.au)

# INDEX

## Page

### 01 OVERVIEW

Introduction	04
Technical data	05 - 07

### 02 SAFETY INSTRUCTIONS

General Guidelines	08
Warnings	09

### 03 USER INSTRUCTIONS

09

### 04 MAINTENANCE

10

### 05 WARRANTY

11

**Dear Customer,**

Thank you for choosing the **Pneumatic Anchor Machine – APAM.**

Please read the manual carefully before use and keep it readily accessible beside the Frame at all times.

If you have any questions, require spare parts, or need to report any issues, please contact the Aardwolf distributor at your location, provide the product code and serial number, and send them to ***info@aardwolf.com.au*** for assistance.

We hope this advanced tool meets your needs and exceeds your expectations.

Best Regards,

**Aardwolf Industries**

 [info@aardwolf.com.au](mailto:info@aardwolf.com.au)

 [www.aardwolf.com.au](http://www.aardwolf.com.au)

# 01 OVERVIEW



## INTRODUCTION

The Pneumatic Anchor Machine is equipped with pneumatic grinders and a vacuum-powered base, designed specifically to cut T-slots in the back of vanity tops or wall for attaching anchor bolts in under-counter sinks or architectural facing systems. With two separate vacuum zones on the base, the machine can be operated securely near the edges.

### Key features

- ✧ Industrial quick-couplers for both air and water connections.
- ✧ Combination port that allows vacuum to be applied with compressed air via the built-in venturi vacuum pump.
- ✧ The grinders accept any T diamond bit with a 6mm shank.
- ✧ A water hose with a ball valve and quick-coupler can be quickly detached and used to spray the work area.
- ✧ The machine cuts in both push and pull directions.
- ✧ Alignment indicators on the machine base for precise operation.
- ✧ Machined, anodized aluminum components with high water resistance.
- ✧ Molded rubber vacuum base seal.
- ✧ The machine operates speed of 30,000 RPM.



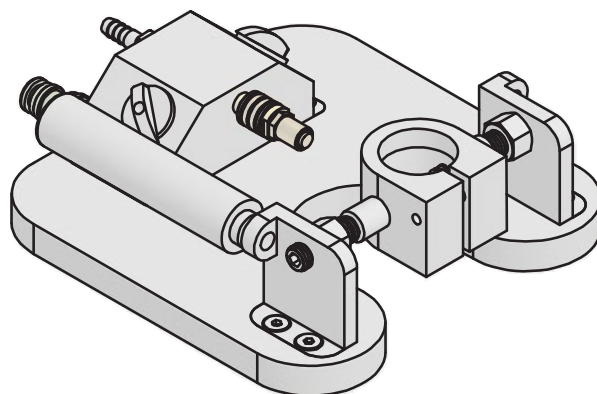
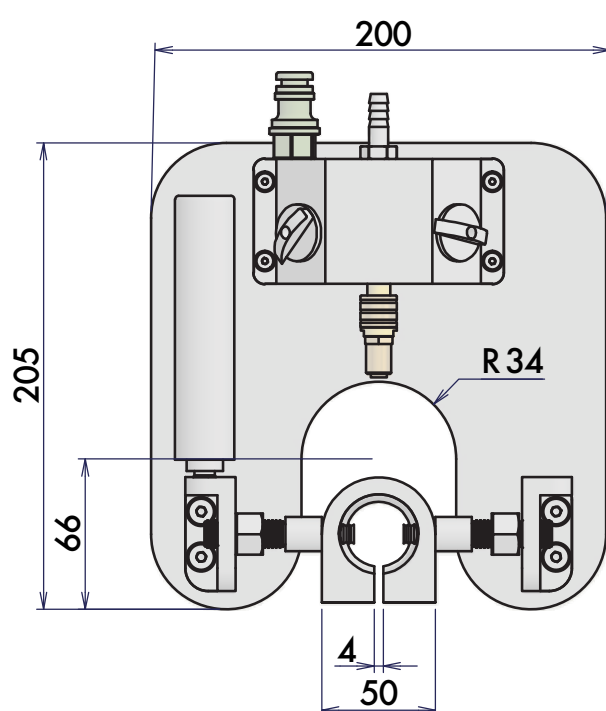
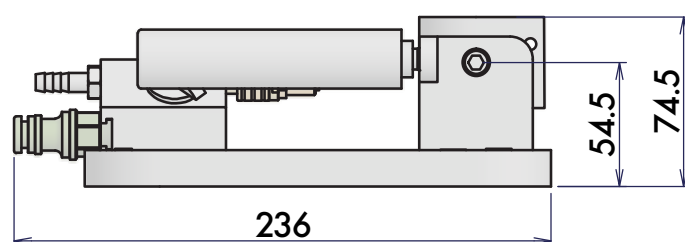
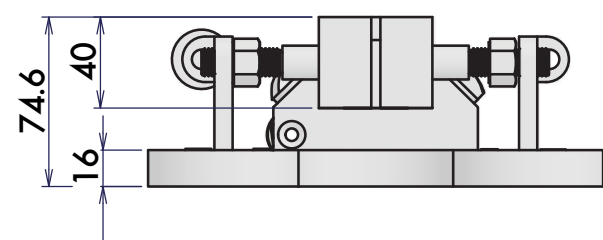


## TECHNICAL DATA

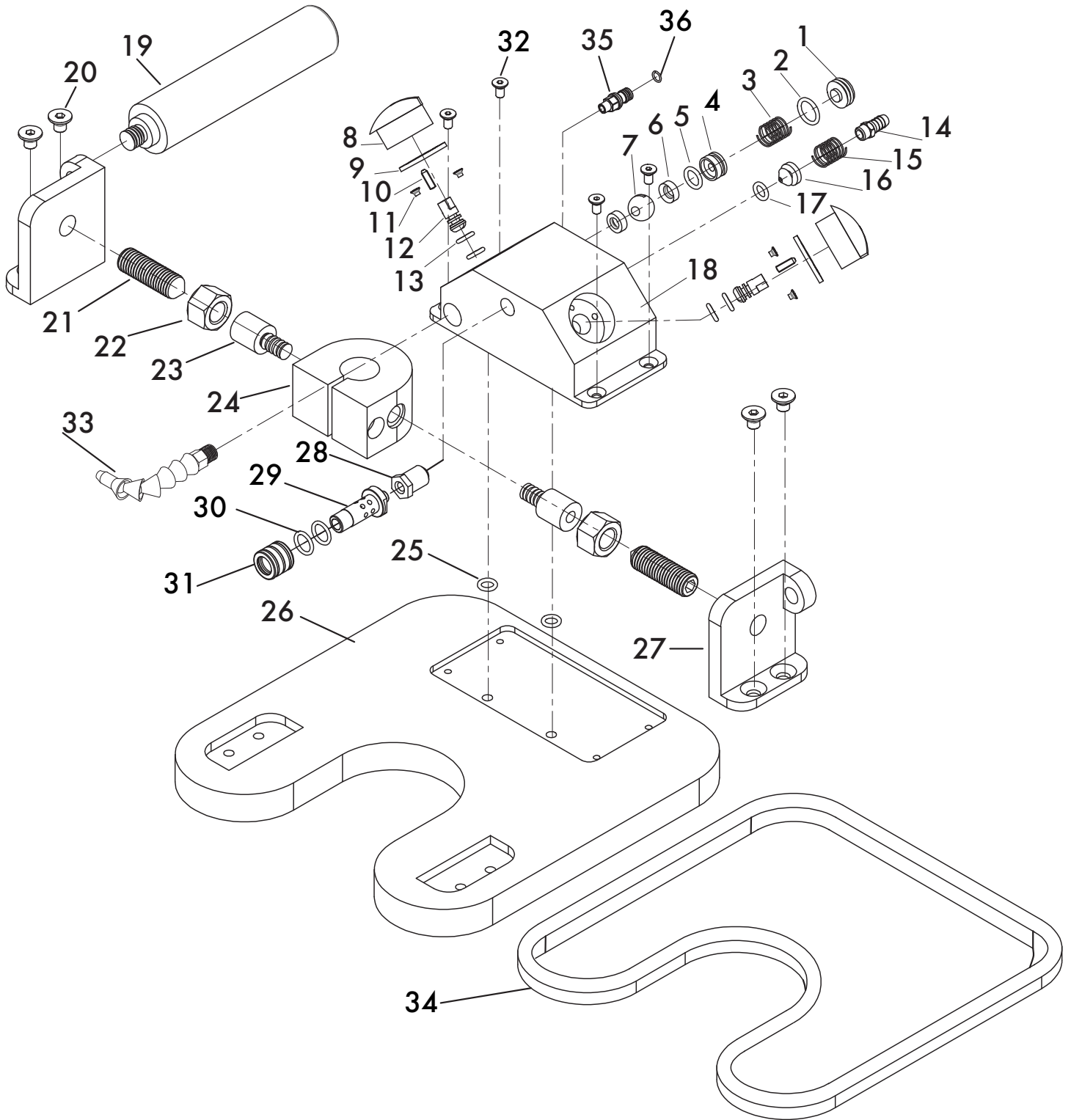
### SPECIFICATIONS

APAM	METRIC	IMPERIAL
Net weight	3.3 Kg	7.3 lbs
Gross weight	5.2 Kg	11.5 lbs
Packaging dimensions	L.440 x W.340 x H.160 mm	17.3 x 13.4 x 6.3 in
Collet diameter	6 mm	0.2 in
No load speed 25,000 RPM	Air connection 1/4" industrial series coupler plug	
Vacuum base -80 kPa vacuum	Water connection hose thread- 1/4" PT	

### DIMENSIONS



## DRAWING - APAM



## PARTS LIST

POS.	DESCRIPTION	Q'TY	POS.	DESCRIPTION	Q'TY
1	Nut Cap	2	19	The Hand	1
2	O-Ring 12*2.6	2	20	Socket Counter Hear Crew M6x10	4
3	Spring	2	21	Socket Set Screw Cone Point M12x40	2
4	Brass Washer	2	22	Nut M12	2
5	O-Ring 7*1.5	2	23	Point Nut M10	2
6	Teflon Washer	4	24	Rotary Base	1
7	Ball Ø12	2	25	O-Ring 6*1.78	2
8	Lock Valve	2	26	Vacuum Base	1
9	Brass Plate	2	27	Hand Pat	2
10	Pin Cotter Ø2.5*10	2	28	Silencer	1
11	Socket Counter Hear Crew M3x8	4	29	Vavle	1
12	Pin Valve	2	30	Seal Ø 12 X 2.5	2
13	O-Ring 4*1.5	4	31	Slider	1
14	Air Mouse Tail Inox 1/4	1	32	Socket Counter Hear Crew M4x10	4
15	Spring	1	33	Change Heat Tube 1 /4	1
16	Venturi Pin	1	34	Epdm Round Seal M7x 10	1
17	O-Ring 4.47*1.78	1	35	Water Valve 1/4	1
18	Main Valve	1	36	Seal 16 X 3mm	1

# 02 SAFETY INSTRUCTIONS



## GENERAL GUIDELINES

### Training

The operator must be trained and possess the necessary knowledge, skills, and expertise in all relevant industry and regulatory standards for operating the Machine in their geographical location.

### Manual Availability

Ensure the manual is available and understood by all operators.

### Wear Protective Gear

Always wear appropriate PPE, including safety goggles, gloves, ear protection, and a dust mask, to protect against flying debris, loud noise, and dust.

### Inspect Before Use

Perform a visual inspection of the machine and its components before each use. Check for loose parts, wear, or damage to ensure safe operation.

### Secure the Workspace

Ensure the work area is clean, dry, and clutter-free to avoid accidents. Use the machine on a stable surface and keep bystanders safe.

### Clean Contact Areas

Keep posts and rubber lining clean for a secure grip.

### Avoid Overheating

Ensure proper cooling by using the water hose to spray the work area as needed. This helps prevent overheating of the machine and materials.

### Tool Compatibility

Only use T diamond bits with a 6mm shank, as specified. Using improper tools may lead to malfunction or injury.

### Vacuum Zones

Use the vacuum-powered base zones correctly. Turn the zones on or off to prevent instability, especially when operating near edges.





## WARNING

### NEVER

- Never operate without safety gear or supervision.
- Never use damaged or improperly secured equipment.
- Never exceed pressure limits or modify the machine.
- Never ignore maintenance or work near flammable materials
- Always secure the machine and check connections before use.
- Always inspect for damage before each use and replace worn parts immediately to maintain safety.
- Always use compatible tools (T diamond bits, 6mm shank).

## 03 USER INSTRUCTIONS

### 1 Prepare the Work Surface

Mark the precise locations for cutting T-slots.

### 2 Setup the Machine

Connect the air and water supplies using the quick couplers.

### 3 Secure the Machine

Activate the vacuum zones on the machine's base to ensure it is firmly attached to the surface.

### 4 Begin Cutting

- Turn on the air supply and power the grinder.
- Guide the machine slowly along the marked lines, maintaining steady pressure.
- Use the water hose for cooling and to reduce dust.

### 5 Inspect the Cut

- After cutting, check the T-slots for proper depth and alignment.
- Make adjustments if necessary.

## 04 MAINTENANCE

### ✦ Inspection

- Check the machine for wear, loose parts, and damage before and after use.
- Ensure all connections (air, water, and vacuum) are tight and functional.

### ✦ Cleaning

- Clean the machine and components after each use to remove debris and dust.
- Use a soft cloth and avoid harsh chemicals to protect the machine's finish.

### ✦ Lubrication

- Apply lubricant to moving parts weekly.
- Avoid over-lubricating, which could attract dust or debris.

### ✦ Storage

- Store the machine in a dry, dust-free location when not in use.
- Cover the machine to prevent exposure to moisture and contaminants.

### ✦ Replacement

- Replace worn-out parts like diamond bits, seals, or hoses immediately.
- Use only manufacturer-approved components for replacements.



**AARDWOLF PRODUCT VIDEO**

[www.youtube.com/user/AardwolfGroup](http://www.youtube.com/user/AardwolfGroup)

# 05 WARRANTY



## PRODUCT CHECK AND REPORTING

Upon receiving the product, the buyer should verify, based on the spare parts list and attached spare drawings, that all spare parts are intact and not lost during shipment. Any damages or losses must be officially reported to Aardwolf Industries within eight days of purchase.



## WARRANTY INFORMATION

The product comes with a 12-month warranty from the date of purchase, following Aardwolf Industries' warranty policy.



## WARRANTY EXCLUSIONS

The warranty coverage does not apply if:

- ✘ The product is handled incorrectly.
- ✘ The user fails to comply with the instructions provided in the manual.
- ✘ The product's maximum W.L.L is exceeded.
- ✘ Damages result from inadequate maintenance and inspections.
- ✘ Damage is due to improper storage.
- ✘ Repairs are performed by the user without permission from Aardwolf Industries.
- ✘ Unofficial spare parts are used.



## DECLARATION OF CONFORMITY

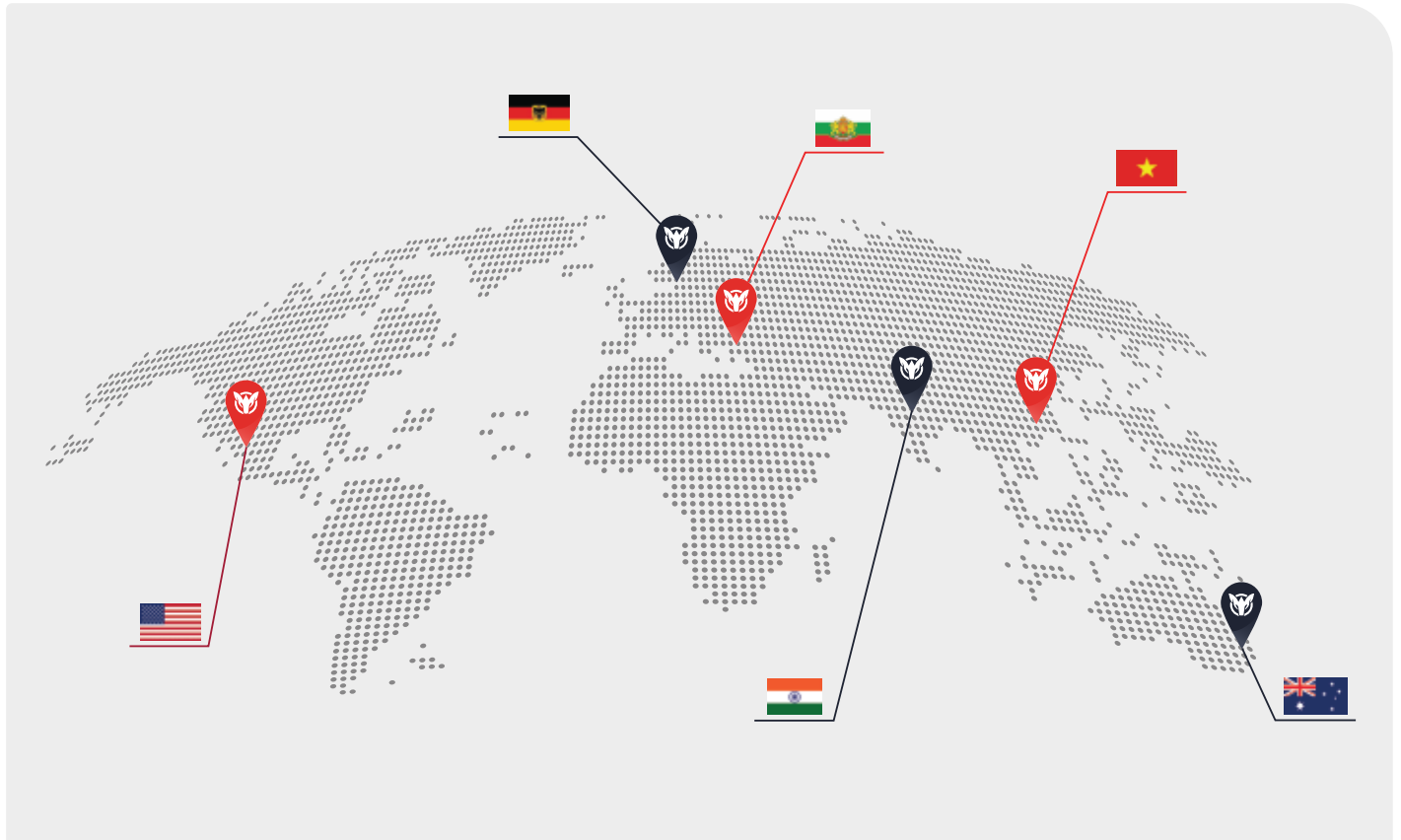
We declare that the product conforms to the following standards:

- ✘ The Machinery Directive 2006/42/EC
- ✘ Australian Standard 4991-2004

**Note:** *It is the user's responsibility to comply with state or local laws. The end user is responsible for using the equipment safely, in the manner it is designed for, and within the unit's rated capacity.*

## WE PROVIDE

Simple, Reliable, Cost Saving And  
Awesome Ideas For Your Business



## FIND THE NEAREST AARDWOLF SERVICE CENTER

### AUSTRALIA

1/5 Stanton Road, Seven Hills NSW 2147  
Tel: 02 9838 8427  
Email: [enquiries@aardwolfaustralia.com](mailto:enquiries@aardwolfaustralia.com)  
Web: [www.aardwolfaustralia.com](http://www.aardwolfaustralia.com)

### BULGARIA

Str.Usta Kolio Ficheto 33  
Tel: +359 887 933 754  
Email: [adrian@toolrange.com](mailto:adrian@toolrange.com)

### GERMANY

Schulze-Delitzsch-Weg 2, 33175 Bad Lippspringe  
Tel: 05252 8382830  
Email: [sales@toolrange.com.de](mailto:sales@toolrange.com.de)

### INDIA

Harmara Road, Industrial Area, Madanganj, Kishangarh,  
District- Ajmer, Rajasthan India 305801  
Tel: +91 73000 68444  
Email: [sales@aardwolf.co.in](mailto:sales@aardwolf.co.in)  
Web: [www.aardwolf.co.in](http://www.aardwolf.co.in)

### USA

9401 Norwalk Blvd, Santa Fe Springs, CA 90670  
Tel: (562) 553-6050  
Email: [sales@aardwolfusa.com](mailto:sales@aardwolfusa.com)  
Web: [www.aardwolfusa.com](http://www.aardwolfusa.com)

### VIETNAM

1B, An Phu, Thuan An City, Binh Duong Province, Vietnam  
Tel: +84 931 707 793  
Email: [info@aardwolf.com.au](mailto:info@aardwolf.com.au)  
Web: [www.aardwolf.com.au](http://www.aardwolf.com.au)

