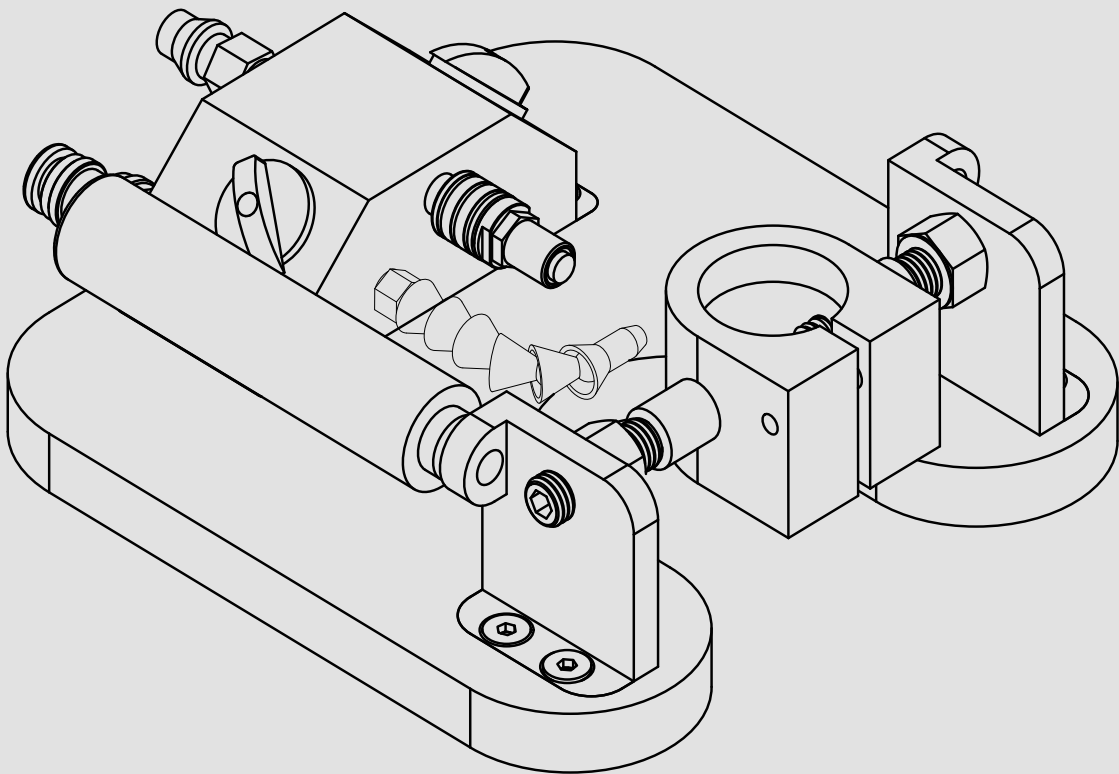


PNEUMATIC ANCHOR MACHINE

APAM



CREATED BY

AARDWOLF INDUSTRIES
Marketing Department

Published on:
June 2025

Contact us: info@aardwolf.com.au
www.aardwolf.com.au

INDEX

Page

01 OVERVIEW

Introduction

04

Technical data

05 - 07

02 SAFETY INSTRUCTIONS

General Guidelines

08

Warnings

09

03 USER INSTRUCTIONS

09

04 MAINTENANCE

10

05 WARRANTY

11

Dear Customer,

Thank you for choosing the **Pneumatic Anchor Machine – APAM.**

Please read the manual carefully before use and keep it readily accessible beside the Frame at all times.

If you have any questions, require spare parts, or need to report any issues, please contact the Aardwolf distributor at your location, provide the product code and serial number, and send them to ***info@aardwolf.com.au*** for assistance.

We hope this advanced tool meets your needs and exceeds your expectations.

Best Regards,

Aardwolf Industries

 info@aardwolf.com.au

 www.aardwolf.com.au

01 OVERVIEW



INTRODUCTION

The Pneumatic Anchor Machine is equipped with pneumatic grinders and a vacuum-powered base, specifically designed for cutting T-slots into the back of vanity tops or walls.

These T-slots allow for the attachment of anchor bolts in under-counter sinks or architectural facing systems. The machine features two independent vacuum zones, each with its own on/off valve for precise control. This dual-zone vacuum system provides a secure grip and stable operation-even near slab edges-ensuring safety and reliability during use.

Key features

- ✦ Dual vacuum zones with separate on/off valves for safe edge operations and partial surface grip.
- ✦ Industrial quick-couplers for both air and water connections.
- ✦ Combination port that allows vacuum to be applied with compressed air via the built-in venturi vacuum pump.
- ✦ The grinders accept any T diamond bit with a 6mm shank.
- ✦ A water hose with a ball valve and quick-coupler can be quickly detached and used to spray the work area.
- ✦ The machine cuts in both push and pull directions.
- ✦ Alignment indicators on the machine base for precise operation.
- ✦ Machined, anodized aluminum components with high water resistance.
- ✦ Molded rubber vacuum base seal.
- ✦ The machine operates speed of 30,000 RPM.



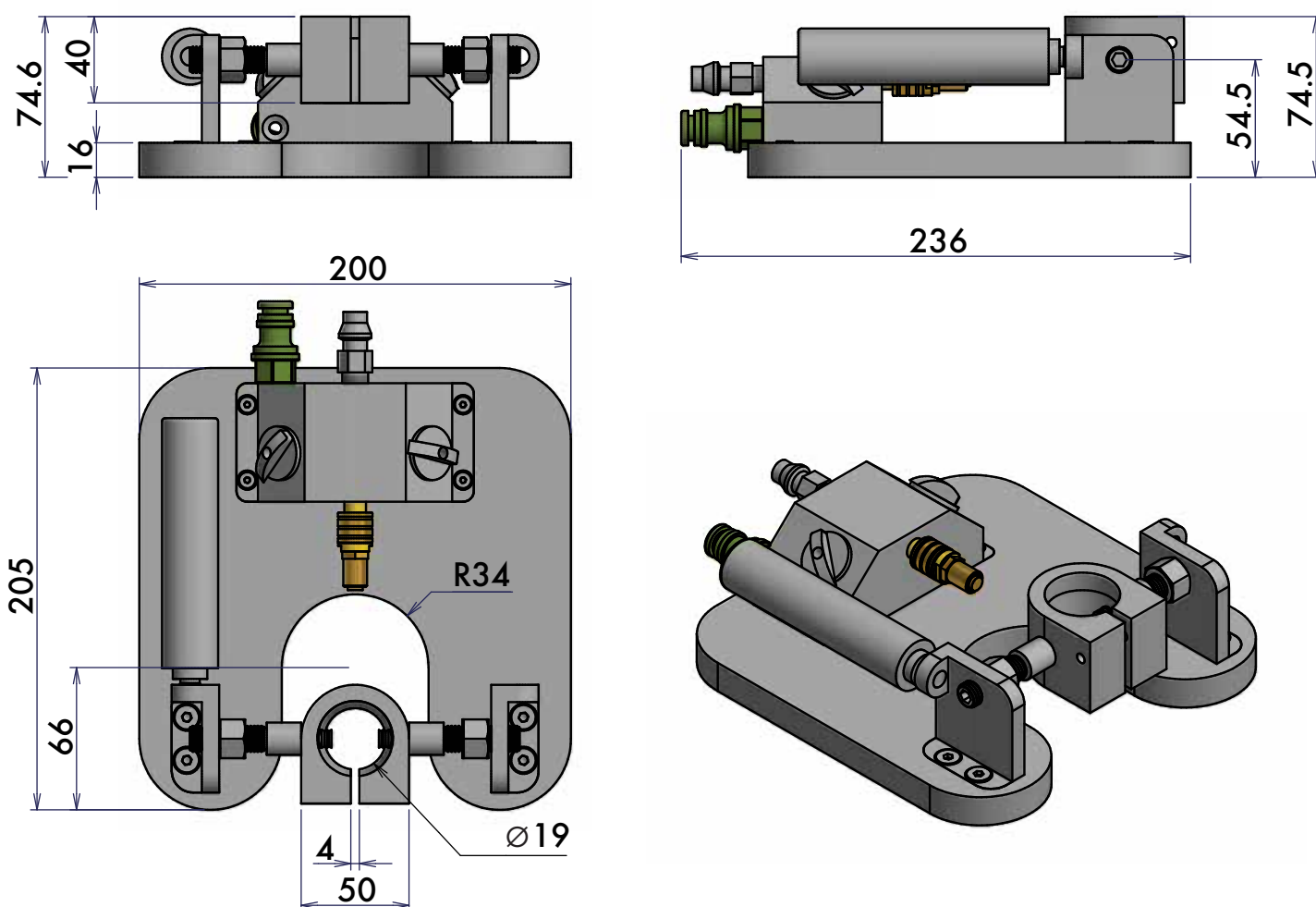


TECHNICAL DATA

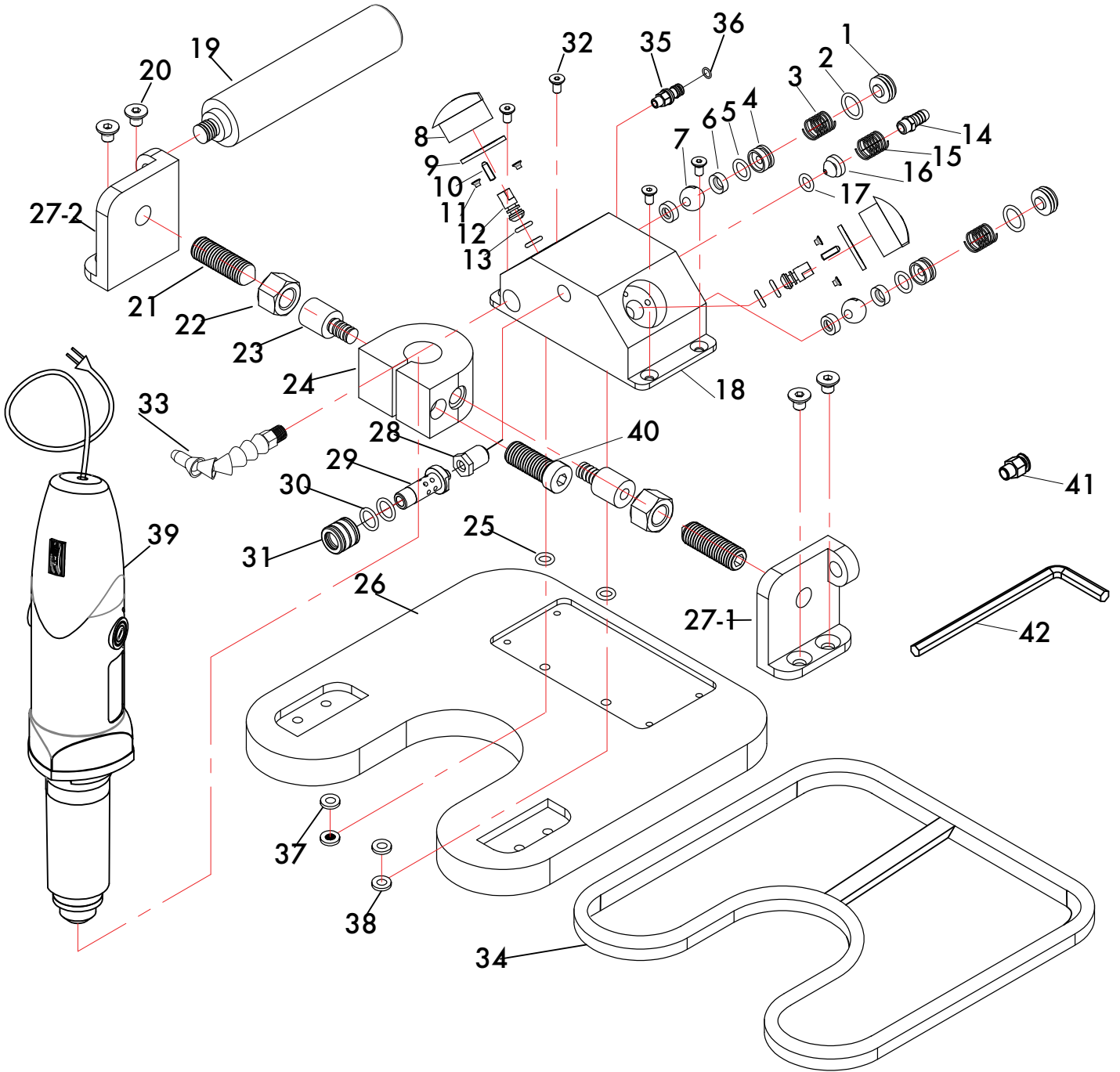
SPECIFICATIONS

APAM	METRIC	IMPERIAL
Net weight	3.3 Kg	7.3 lbs
Gross weight	5.2 Kg	11.5 lbs
Packaging dimensions	L.440 x W.340 x H.160 mm	17.3 x 13.4 x 6.3 in
Collet diameter	6 mm	0.2 in
No load speed 25,000 RPM	Air connection 1/4" industrial series coupler plug	
Vacuum base -80 kPa vacuum	Water connection hose thread- 1/4" PT	

DIMENSIONS (mm)



DRAWING - APAM



PARTS LIST

POS.	DESCRIPTION	Q'TY	POS.	DESCRIPTION	Q'TY
1	Nut cap	2	22	Nut M12	2
2	O-ring Ø12x2.6	2	23	Point nut M10	2
3	Spring	2	24	Rotary base	1
4	Brass washer	2	25	O-ring Ø6x1.78	2
5	O-ring Ø7x1.5	2	26	Vacuum base	1
6	Teflon washer	4	27-1	Handle pad left	1
7	Ball Ø12	2	27-2	Handle pad right	1
8	Lock valve	2	28	Silencer	1
9	Brass plate	2	29	Vavle	1
10	Pin cotter Ø2.5x10	2	30	Seal Ø12x2.5	2
11	Socket counter head screw M3x8	4	31	Slider	1
12	Pin valve	2	32	Socket counter head screw M4x10	4
13	O-ring Ø4x1.5	4	33	Change heat tube 1 /4	1
14	Air Mouse Tail Inox 1/4	1	34	EPDM round seal M7x 10	1
15	Spring	1	35	Water Valve 1/4	1
16	Venturi nozzle	1	36	O-ring Ø16x3mm	1
17	O-ring Ø4.47x1.78	1	37	Filter mesh	2
18	Main valve	1	38	Plastic limit	2
19	Handle	1	39	750W-AW Grinder	1
20	Socket counter head screw M6x10	4	40	Hexagon socket head cap screw M6x40	1
21	Socket set screw cone point M12x40	2	41	Connectors male tube Ø6x1/4"	1
			42	Allen key 5mm	1

02 SAFETY INSTRUCTIONS



GENERAL GUIDELINES

✦ Training

The operator must be trained and possess the necessary knowledge, skills, and expertise in all relevant industry and regulatory standards for operating the Machine in their geographical location.

✦ Manual Availability

Ensure the manual is available and understood by all operators.

✦ Wear Protective Gear

Always wear appropriate PPE, including safety goggles, gloves, ear protection, and a dust mask, to protect against flying debris, loud noise, and dust.

✦ Inspect Before Use

Perform a visual inspection of the machine and its components before each use. Check for loose parts, wear, or damage to ensure safe operation.

✦ Secure the Workspace

Ensure the work area is clean, dry, and clutter-free to avoid accidents. Use the machine on a stable surface and keep bystanders safe.

✦ Clean Contact Areas

Keep posts and rubber lining clean for a secure grip.

✦ Avoid Overheating

Ensure proper cooling by using the water hose to spray the work area as needed. This helps prevent overheating of the machine and materials.

✦ Tool Compatibility

Only use T diamond bits with a 6mm shank, as specified. Using improper tools may lead to malfunction or injury.

✦ Vacuum Zones

Operate the independent vacuum zones properly to ensure stable suction. Activate only the required zone when working near edges to maintain balance and safety.



WARNING

NEVER

- Never operate without safety gear or supervision.
- Never use damaged or improperly secured equipment.
- Never exceed pressure limits or modify the machine.
- Never ignore maintenance or work near flammable materials
- Always secure the machine and check connections before use.
- Always inspect for damage before each use and replace worn parts immediately to maintain safety.
- Always use compatible tools (T diamond bits, 6mm shank).

03 USER INSTRUCTIONS

1 Prepare the Work Surface

Mark the precise locations for cutting T-slots.

2 Setup the Machine

Connect the air and water supplies using the quick couplers.

3 Secure the Machine

Activate the vacuum zones on the machine's base to ensure it is firmly attached to the surface.

4 Begin Cutting

- Turn on the air supply and power the grinder.
- Guide the machine slowly along the marked lines, maintaining steady pressure.
- Use the water hose for cooling and to reduce dust.

5 Inspect the Cut

- After cutting, check the T-slots for proper depth and alignment.
- Make adjustments if necessary.

04 MAINTENANCE

✦ Inspection

- Check the machine for wear, loose parts, and damage before and after use.
- Ensure all connections (air, water, and vacuum) are tight and functional.

✦ Cleaning

- Clean the machine and components after each use to remove debris and dust.
- Use a soft cloth and avoid harsh chemicals to protect the machine's finish.

✦ Lubrication

- Apply lubricant to moving parts weekly.
- Avoid over-lubricating, which could attract dust or debris.

✦ Storage

- Store the machine in a dry, dust-free location when not in use.
- Cover the machine to prevent exposure to moisture and contaminants.

✦ Replacement

- Replace worn-out parts like diamond bits, seals, or hoses immediately.
- Use only manufacturer-approved components for replacements.



AARDWOLF PRODUCT VIDEO

www.youtube.com/user/AardwolfGroup

05 WARRANTY



PRODUCT CHECK AND REPORTING

Upon receiving the product, the buyer should verify, based on the spare parts list and attached spare drawings, that all spare parts are intact and not lost during shipment. Any damages or losses must be officially reported to Aardwolf Industries within eight days of purchase.



WARRANTY INFORMATION

The product comes with a 12-month warranty from the date of purchase, following Aardwolf Industries' warranty policy.



WARRANTY EXCLUSIONS

The warranty coverage does not apply if:

- ✘ The product is handled incorrectly.
- ✘ The user fails to comply with the instructions provided in the manual.
- ✘ The product's maximum W.L.L is exceeded.
- ✘ Damages result from inadequate maintenance and inspections.
- ✘ Damage is due to improper storage.
- ✘ Repairs are performed by the user without permission from Aardwolf Industries.
- ✘ Unofficial spare parts are used.



DECLARATION OF CONFORMITY

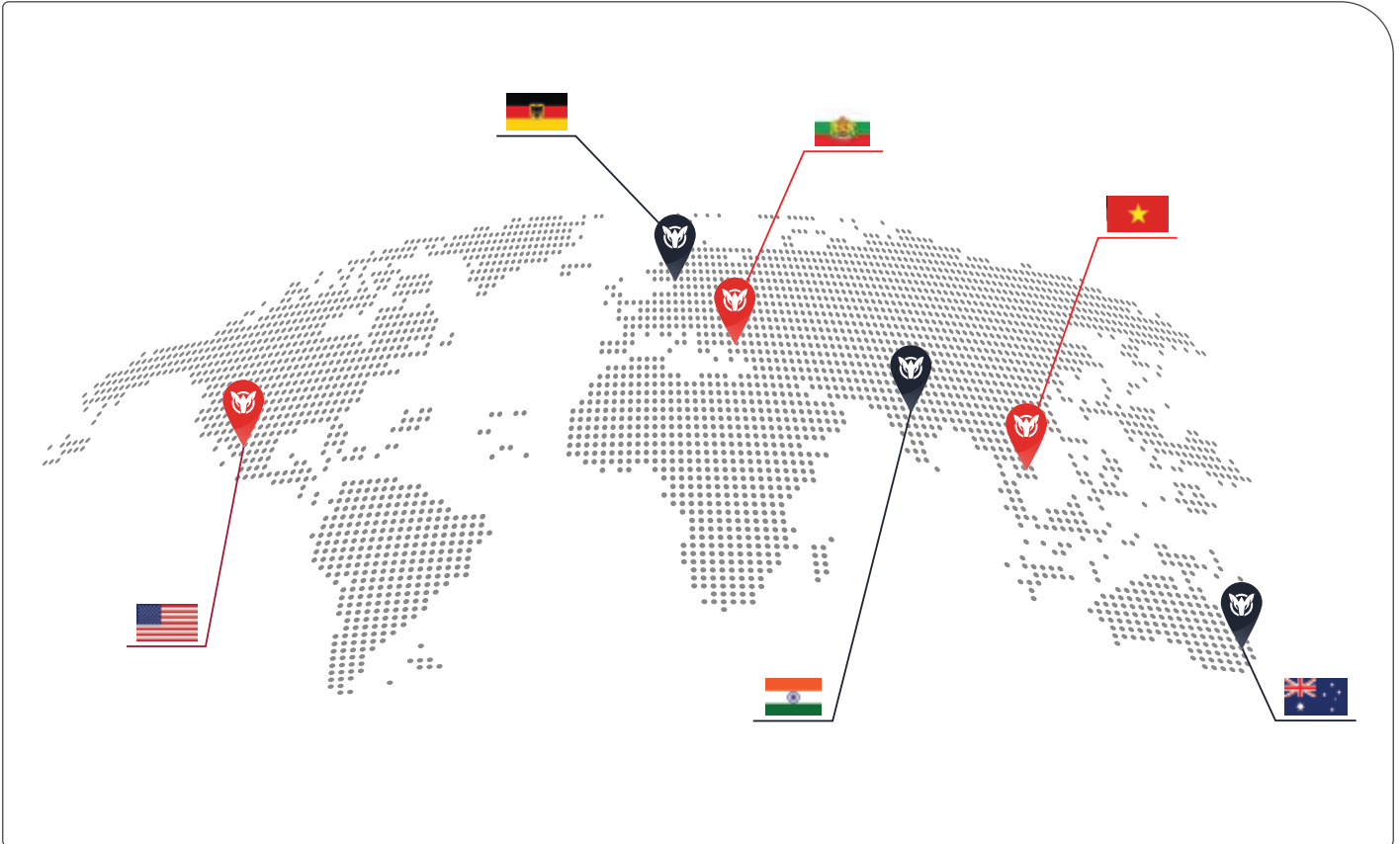
We declare that the product conforms to the following standards:

- ✘ The Machinery Directive 2006/42/EC
- ✘ Australian Standard 4991-2004

Note: *It is the user's responsibility to comply with state or local laws. The end user is responsible for using the equipment safely, in the manner it is designed for, and within the unit's rated capacity.*

WE PROVIDE

Simple, Reliable, Cost Saving And
Awesome Ideas For Your Business



FIND THE NEAREST AARDWOLF SERVICE CENTER

AUSTRALIA

1/5 Stanton Road, Seven Hills NSW 2147
Tel: 02 9838 8427
Email: sales@toolrange.com.au
Web: www.aardwolfaustralia.com

BULGARIA

Str.Usta Kolio Ficheto 33
Tel: +359 887 933 754
Email: adrian@toolrange.com

GERMANY

Schulze-Delitzsch-Weg 2, 33175 Bad Lippspringe
Tel: 05252 8382830
Email: sales@toolrange.com.de

INDIA

Harmara Road, Industrial Area, Madanganj, Kishangarh,
District- Ajmer, Rajasthan India 305801
Tel: +91 73000 68444
Email: sales@aardwolf.co.in
Web: www.aardwolf.co.in

USA

9401 Norwalk Blvd, Santa Fe Springs, CA 90670
Tel: (562) 553-6050
Email: sales@aardwolfusa.com
Web: www.aardwolfusa.com

VIETNAM

1B, An Phu, Thuan An City, Binh Duong Province, Vietnam
Tel: +84 931 707 793
Email: info@aardwolf.com.au
Web: www.aardwolf.com.au

