

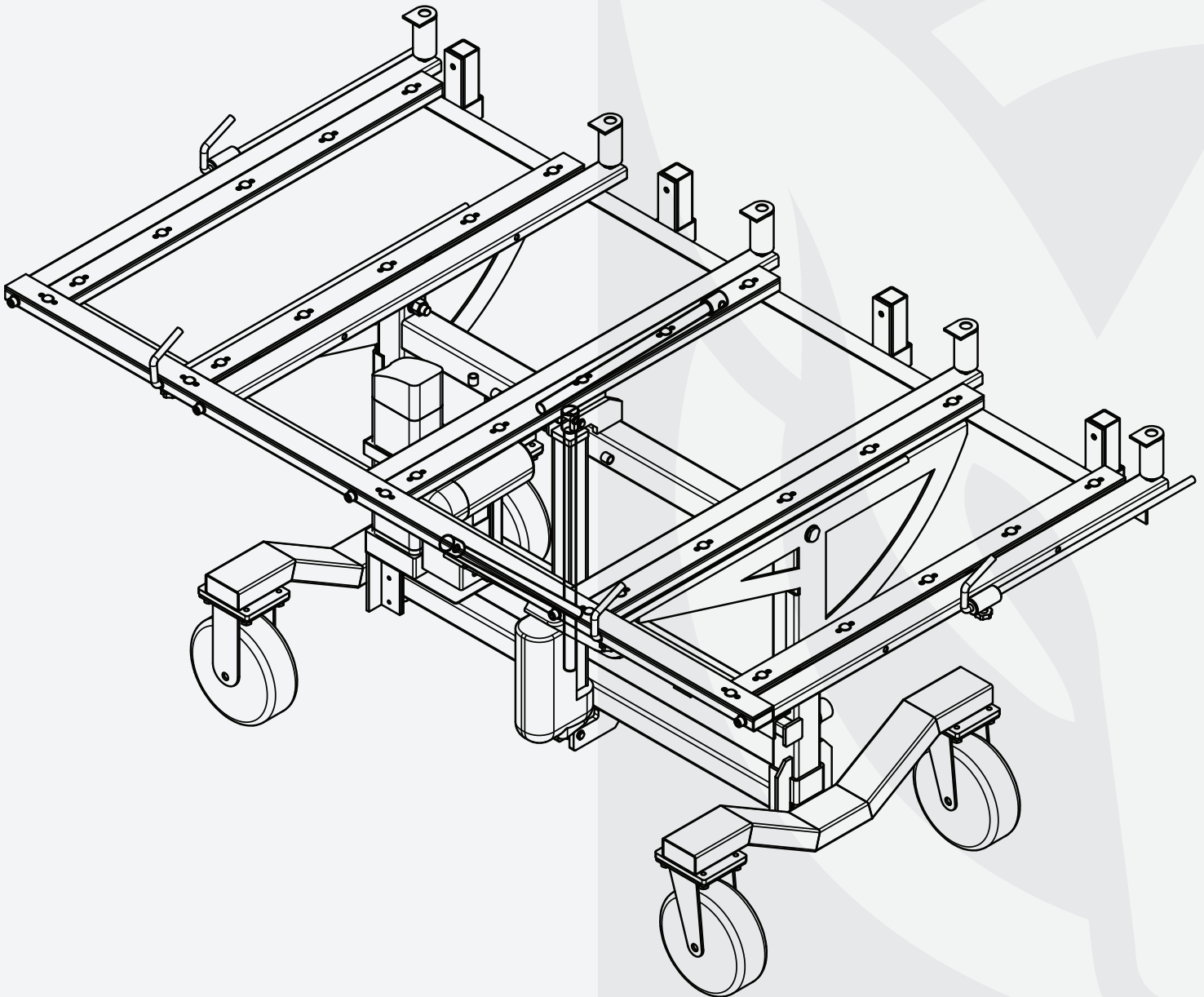


**OWNER'S MANUAL**

# **AARDWOLF**

## **KITCHEN INSTALLATION CART**

### **AKIC**



The Aardwolf Kitchen Installation Cart provides a safer means of stone transportation and installation. The frame features a series of transfer bearings allowing the countertop to roll into place without friction and strain while increasing productivity and efficiency.

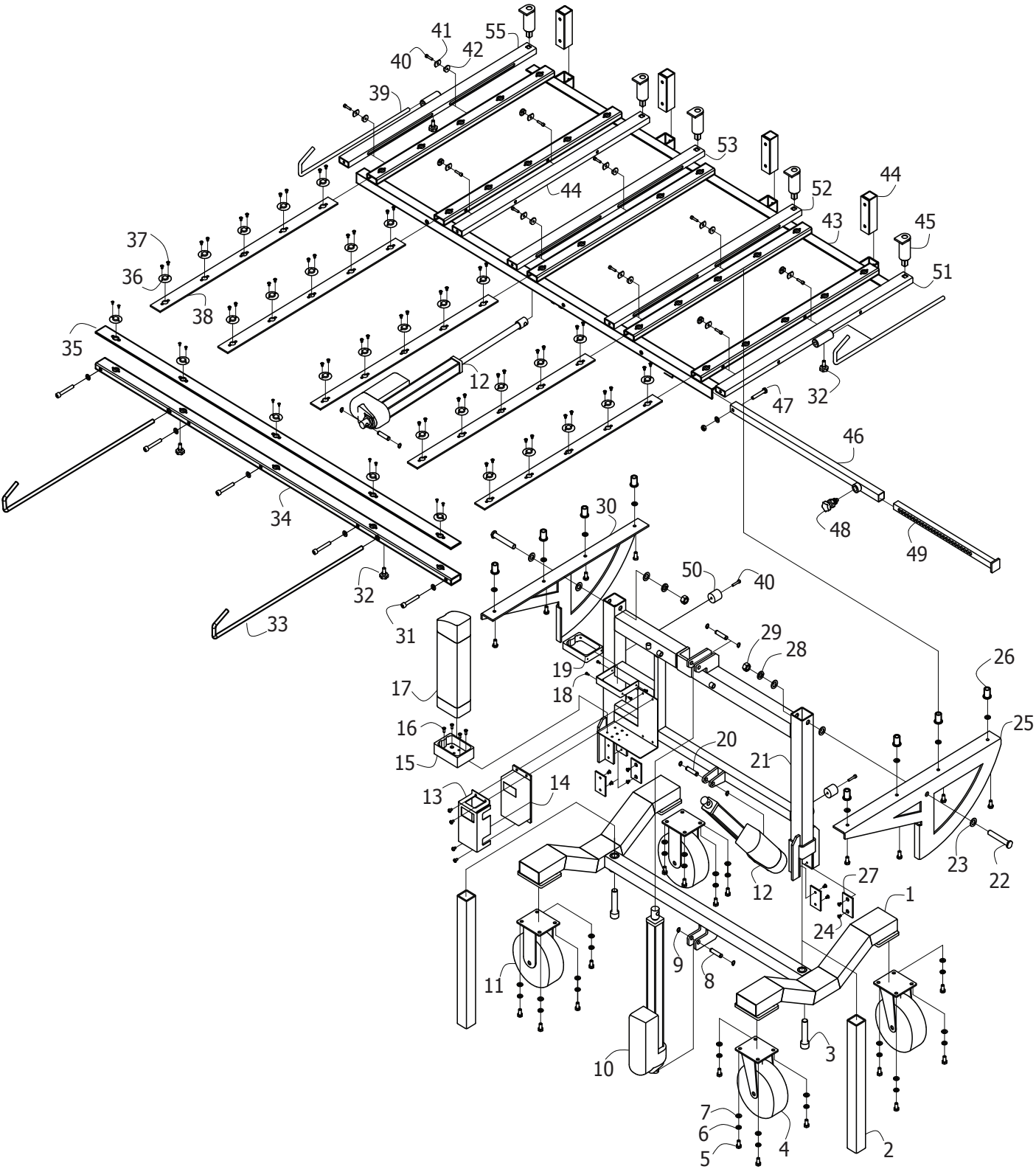
The cart accommodates any size countertop up to 500 kg (1102 lb). The cart can be used to lower, lift, and roll huge pieces onto the kitchen cabinet & assist with final countertop placement. The power lift feature elevates stone up to 13.8"- 40.7" from the ground to support rail and enables controlled tilting for more manageable, less hazardous installation.

The cart features a strong aluminum frame yet only weighs 147 kg (324 lb) for convenient transport and storage. The Aardwolf Kitchen Installation Cart is powered by a long-lasting rechargeable battery controlled via a wireless remote.

## **SAFETY INSTRUCTIONS**

- Carefully consider all safety regulations, standards, and codes in your country for hoisting operations.
- Ensure that each employee reads and understands this manual before using this cart.
- Please be cautious and alert at all times using this device for your and your fellow installer's safety. Be mindful that people are getting injured by handling heavy pieces of stone mostly due to lack of knowledge, carelessness, and not being focused on the task.
- Inspect the Kitchen Installation Cart. If the cart is worn or damaged, do not use it.
- Straps off - Hands-on. When the table is in a horizontal position and without any straps holding the stone down on the cart, the stone could slide in any direction on the transfer bearings. Therefore, ensure someone has a hand on the stone when the straps are removed.
- Ensure brakes are on when the cart is not in motion.
- Do not exceed manufacturers capacity.
- Wear safety equipment, like a helmet, gloves, and safety boots

# DRAWING LIST



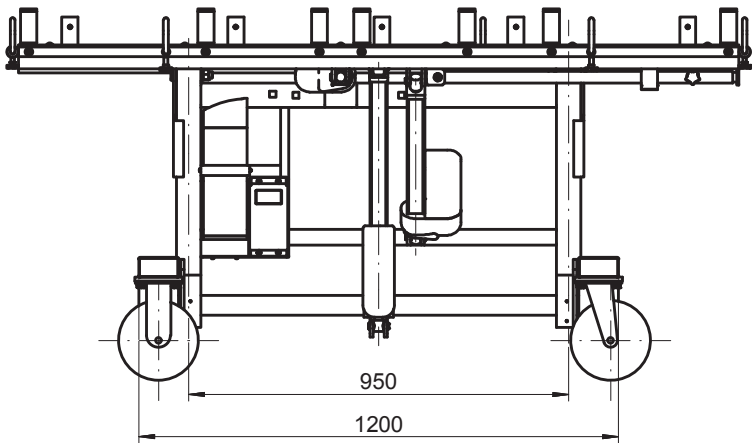
POS.	CODE	DESCRIPTION	Q'TY
01	AKIC-001	Base	01
02	AKIC-002	Vertical bar	02
03	AKIC-003	Hexagon socket M20x90	02
04	AKIC-004	Swisel wheel Ø200mm	02
05	AKIC-005	Bolt M10x20	24
06	AKIC-006	Spring washer M10	16
07	AKIC-007	Washer M10	16
08	AKIC-008	Pin Ø12mm	05

# PARTS LIST

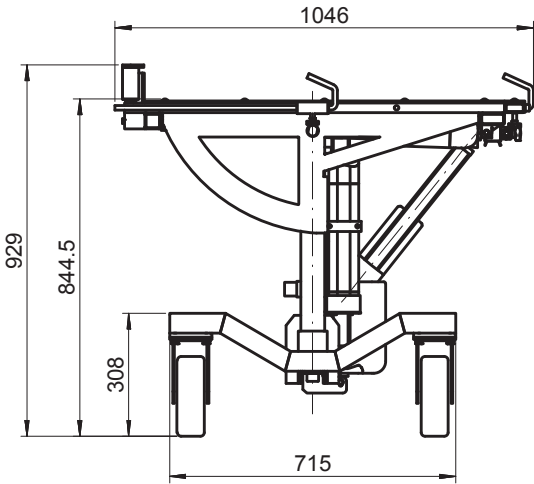
POS.	CODE	DESCRIPTION	Q'TY
09	AKIC-009	External circlip Ø12	12
10	AKIC-010	Linear actuator_1	01
11	AKIC-011	Fixed wheel Ø200mm	02
12	AKIC-012	Linear actuator_2	02
13	AKIC-013	Circuit box cover	01
14	AKIC-014	Circuit box	01
15	AKIC-015	Battery base	01
16	AKIC-016	Socket countersunk M6x16	04
17	AKIC-017	Battery	01
18	AKIC-018	Pan head screw M4x10	04
19	AKIC-019	Battery keeper	01
20	AKIC-020	Pin Ø12mm	01
21	AKIC-021	Vertical slide frame	01
22	AKIC-022	Pin Ø16	02
23	AKIC-023	Washer M16	05
24	AKIC-024	Countersunk flat head M6x10	08
25	AKIC-025	Swing_1	08
26	AKIC-026	Rivet nut M10	08
27	AKIC-027	Copper plate	04
28	AKIC-028	Spring washer M16	02
29	AKIC-029	Nut M16	02
30	AKIC-030	Swing_2	01
31	AKIC-031	Hexagon socket M10x70	05
32	AKIC-032	Knob M10x20	04
33	AKIC-033	Rod Ø12mm type_1	02
34	AKIC-034	Linking bar	01
35	AKIC-035	Black plastic_1	01
36	AKIC-036	Ball	30
37	AKIC-037	Countersunk flat head M4x10	60
38	AKIC-038	Black plastic_2	05
39	AKIC-039	Rod Ø12mm type_2	02
40	AKIC-040	Socket head M6x25	12
41	AKIC-041	Pad Ø28	10
42	AKIC-042	Pad Ø24	10
43	AKIC-043	Horizontal frame	01
44	AKIC-044	Slide bar	01
45	AKIC-045	Roll	05
46	AKIC-046	Leg	01
47	AKIC-047	Bolt M10x60	01
48	AKIC-048	Adjustable pin	01
49	AKIC-049	Slide bar	01
50	AKIC-050	Rubber	02
51	AKIC-051	Horizontal slide bar_1	01
52	AKIC-052	Horizontal slide bar_2	01
53	AKIC-053	Horizontal slide bar_3	01
54	AKIC-054	Horizontal slide bar_4	01
55	AKIC-055	Horizontal slide bar_5	01



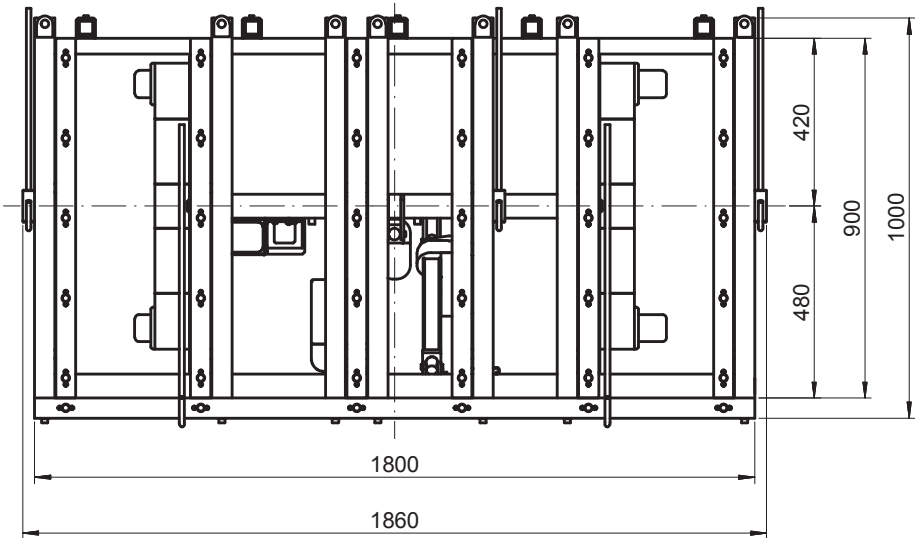
# DIMENSIONS



FRONT VIEW



SIDE VIEW



TOP VIEW

# SPECIFICATIONS

AKIC	Metric	Imperial
Dimensions of the table	2000 - 1100 mm	78.7 - 43.3 in
Height of the frame from the ground to support rail	350 - 1035 mm	13.8 - 40.7 in
Working load limit	500 kg	1102 lb
Net weight	147 kg	324 lb
Gross weight	194 kg	428 lb
Packaging dimensions	1920 x 1100 x 530 mm	75.6 x 43.3 x 20.9 in

# **FEATURES**

---

- Flexible table surface with fixed and adjustable surfaces for different material sizes.
- Equipped with transfer bearings on the table surface allows the countertop to be rolled into place without friction and strain.
- The cart can lower, lift, and roll huge workpieces and assist with final countertop placement.
- The product consists of 3 actuators for lowering, lifting and tilting workpieces.
- Wireless remote Control.
- It is engineered for optimum stability and maneuverability.
- It is powered by a 24V rechargeable lithium-ion battery.
- 10" non-marking, flat-free, shock-absorbing tires.

# **INSTRUCTIONS FOR USE**

---

- Check all parts of the Kitchen Installation Cart before working.
- Now you check the height and width of the frame, then check the length of the table.
- You can also check if the Electric Cylinder that supports the table's frame reaches maximum height by pressing the UP button on the Remote Control. Then check the frame in horizontal and vertical directions by pressing the TILTING DOWN and TILTIND UP buttons of the Remote Control. If they work well, you can start the job.
- First, turn on the Kitchen Installation Cart battery and keep your feet clear of the wheels.
- Observe the LCD on the battery; if it shows a full battery, you can work safely.
- Use the Aardwolf products as Self-locking Trolleys combined with the Stone Panel Carriers or Carry Clamp for Sheet Material to place the stone slab onto the Kitchen Installation Cart. You ensure that the slab must be placed on the rollers and then push the slab to be balanced on the frame.
- Attach the rods on the stone slab surface to ensure the material is tightened into the frame.
- Press the TILTING DOWN of the Remote Control to tilt the loaded frame down, and it can be flipped the stone slab rest on the frame. Ensure that the center of the stone slab lines up with the center of the Kitchen Installation Cart.
- Observe the loaded frame parallels the height and width of the kitchen countertop, and you can stop pressing the Remote Control and use your hands to slide the stone slab onto the kitchen countertop's surface to complete the work.

# INSTRUCTIONS FOR USE

---

**NOTE:** Suppose the distance from the slab position you take it into the Kitchen Installation Cart to the Kitchen Countertop is so far. In that case, you can use Remote Control to adjust the height of the frame, the length, and the width of the table so that you can move it quickly. And you can see "How to use the Remote Control" to clarify each feature below:

## HOW TO USE THE REMOTE CONTROL:

Remote Control is used to tilt/adjust the frame's height and width and the table's length.



- **UP:** Press and keep button to adjust the maximum height of the Kitchens Installation Cart.
- **DOWN:** Press and keep the button to adjust the minimum height of the Kitchens Installation Cart.
- **UP-DOWN** buttons are used to adjust the height of the Kitchen Installation Cart so that it is paralleled with the surface of the kitchen countertop.
- **THE TILTING DOWN** is used to flip "down" the loaded frame to the horizontal direction by pressing and keeping this button.
- **THE TILTING UP** is used to flip "up" the loaded frame to the vertical direction by pressing and keeping this button.
- **EXTENDING - RETRACTING** buttons adjust the width of the table's frame. It means you can adjust the width of the table's frame to be widened or narrow, which is suitable for stone slab sizes.

## INSPECTIONS, MAINTENANCE AND REPAIR

---

- Before each use, check for damaged or missing components. Replace broken or missing pieces immediately with Aardwolf replacement parts.
- Check all fasteners, and make sure to tighten or replace loose or missing hardware.
- Check welds and material near welds for cracking or damage.
- Grease jacks, wheels, and brakes regularly.
- Lubricate transfer roller bearings. Wipe down any excessive oil.
- Check kitchen installation cart clearance regularly. Allow just enough clearance for brackets to swivel by themselves when the table is tilted to a horizontal position.
- Keep the Aardwolf Kitchen Installation Cart clean.
- Store the Cart indoors for longevity.

# WARRANTY

At the time of delivery, it is necessary to check that the Kitchen Installation Cart has not been damaged during shipment.

Any claims must be presented within eight days of the product's delivery date. We grant you one year warranty on the Aardwolf Kitchen Installation Cart countered from the date of purchase.

The warranty coverage is not applicable if:

- The Kitchen Installation Cart is mishandled during manoeuvring.
- The operator fails to comply with the instructions in this booklet.
- The product's maximum permissible capacity is exceeded.
- The specifications for the cart are not followed.
- Damages are due to inadequate maintenance and inspections.
- Damage is due to improper storage.
- The user performed repairs without our permission.
- The user uses non-original spare parts from the Aardwolf brand.



## WE ARE PROVIDING

SIMPLE, REALIABLE, COST SAVING  
AND **AWESOME IDEAS** FOR YOUR BUSINESS



AARDWOLF PRODUCT VIDEO  
[www.youtube.com/user/AardwolfGroup](http://www.youtube.com/user/AardwolfGroup)



## FIND THE AARDWOLF SERVICE CENTRE NEAR YOU

### AUSTRALIA

1/5 Stanton Road, Seven Hills NSW 2147

**Tel:** 02 9838 8427

**Web:** [www.aardwolfaustralia.com](http://www.aardwolfaustralia.com) **Email:** [enquiries@aardwolfaustralia.com](mailto:enquiries@aardwolfaustralia.com)

**BULGARIA** Str.Usta Kolio Ficheto 33 **Tel:** +359 887 933 754

### INDIA

Haramara Road, Industrial Area, Madanganj, Kishangarh, District- Ajmer,  
Rajasthan India 305801

**Web:** [www.aardwolf.co.in](http://www.aardwolf.co.in)

**Tel:** +91 73000 68444  
**Email:** [sales@aardwolf.co.in](mailto:sales@aardwolf.co.in)

### GERMANY

Schulze-Delitzsch-Weg 2, 33175 Bad Lippspringe

**Tel:** 05252 8382830

### USA

19201 South Reyes Avenue, Suite A3 Rancho Dominguez California,

**Tel:** (562) 553-6050

90221

**Web:** [www.aardwolfusa.com](http://www.aardwolfusa.com)

**Email:** [leo@aardwolfusa.com](mailto:leo@aardwolfusa.com)

### VIETNAM

1B, An Phu, Thuan An City, Binh Duong Province, Vietnam

**Tel:** +84 931 707 793

**Web:** [www.aardwolf.com.au](http://www.aardwolf.com.au)

**Email:** [info@aardwolf.com.au](mailto:info@aardwolf.com.au)