

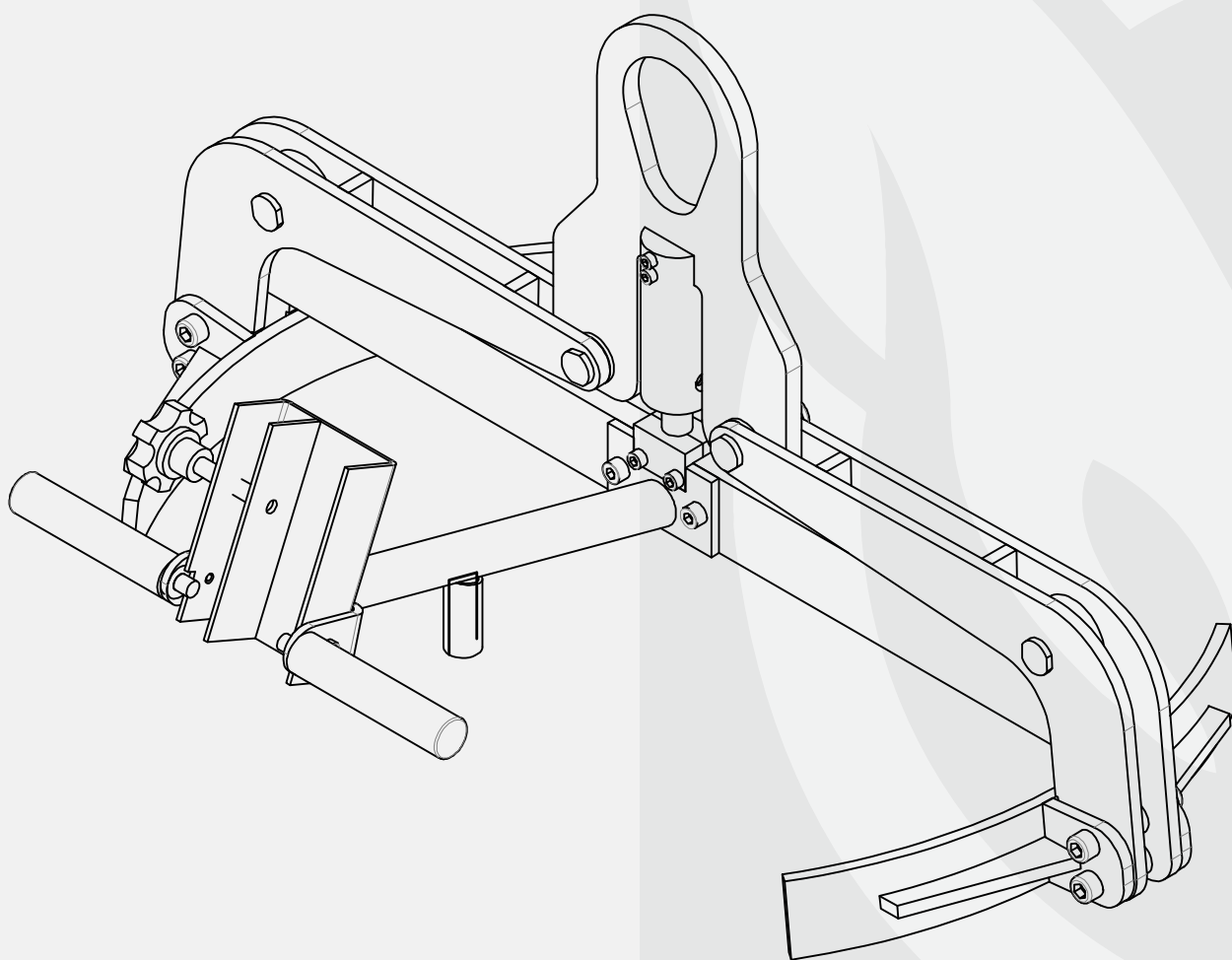


OWNER'S MANUAL

AARDWOLF

DRUM CLAMP

ADC-572



The Drum Clamp ADC-572 is specially designed for lifting and moving drums in a vertical position. Useful and easy to operate, the Drum Clamp is a perfect solution for the lubricant, oil, and liquid industries. The clamp is automatically close when lifted and open when rested by the automatic latch locking. Clamping jaws are designed curved surfaces to make it is fit with diameter of drums. It works great with a crane or forklift boom to transport drums. The Drum Clamp is manufactured with high resistance steel alloy material so that it is strength and durability.

GENERAL SAFETY OPERATIONS

- Carefully consider all safety regulations and existing standards and codes in your country for hoisting operations.
- Permission to work with the Drum Clamp should only be given to people who are suitably trained, competent and acquainted with this operating manual and safety regulations.
- Inspect clamp. If the clamp is worn or damaged, do not use.
- Determine the weight of the drum to be lifted. Do not exceed working load limit shown on clamp. Drum diameter must be a within grip range specified by the manufacture.
- Do a risk assessment of the material that is being lifted.
- The Drum Clamp must be free of fractures and other defects that may cause the clamp to fall apart while being lifted.
- All personnel must stand clear of the load while it is being lifted or moved.
- The grip depends on friction. Check that the around pads are free form dirt, grease and other substances that may reduce their effectiveness.
- Do not lift wet drum. The grip depends on friction. Lifting wet drum may cause the around pads to lose their grip.
- Position the clamp is square with the load to be lifted, and in the center of the load so that it is balanced.
- Make sure that drum is inserted to the full depth into the opening of the clamp.
- Take up drum slowly. A trial tensioning of load will usually indicate proper balance.

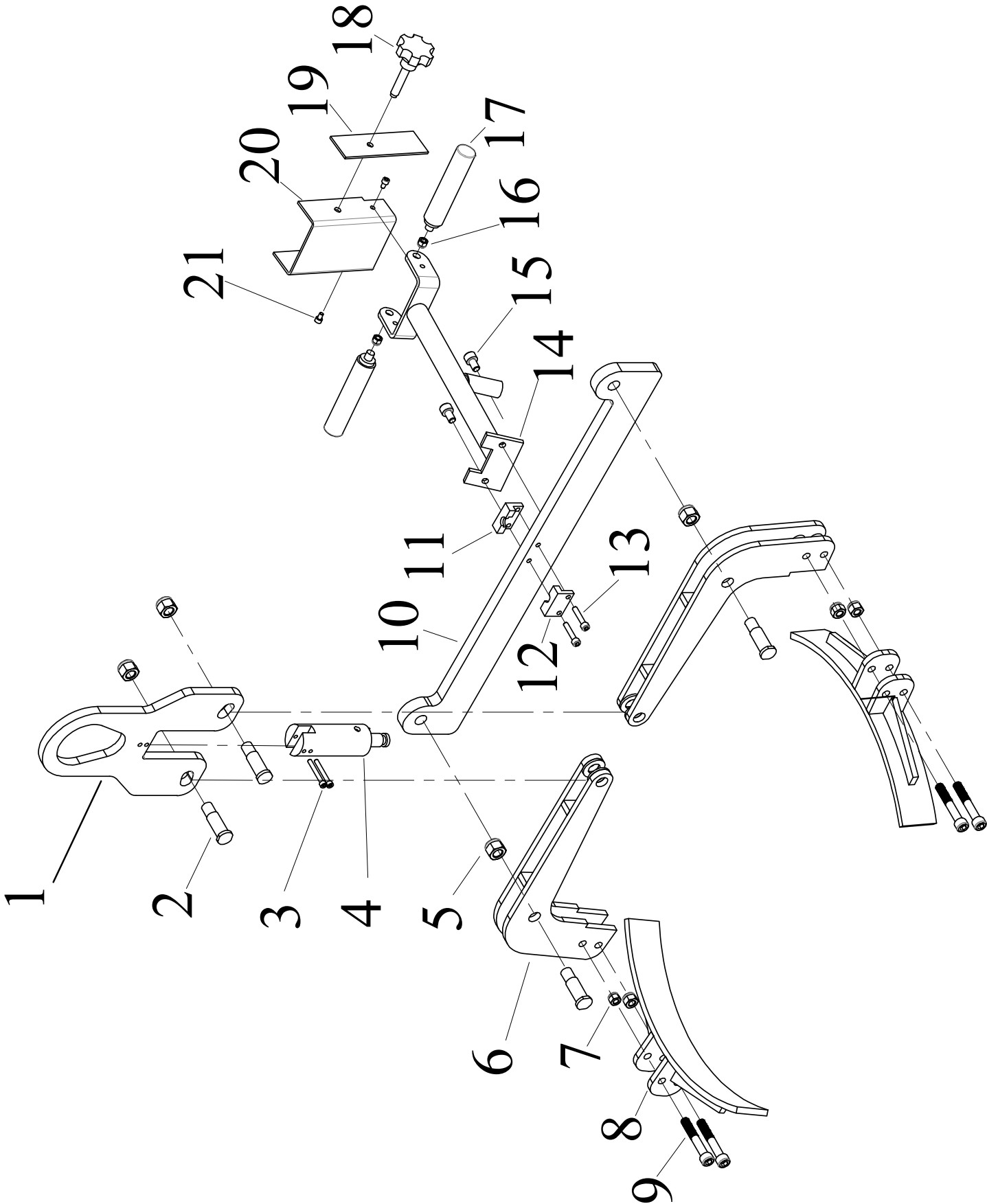
GENERAL SAFETY OPERATIONS

Important! In order to protect people from getting injured it is important to follow some general safety directions while using hoisting accessories.

- Read the operation manual carefully before you use hoisting accessories.
- Make sure that the operation manual is always available at the place where the hoisting accessories are used.
- Give permission to work with hoisting accessories only to people who are suitably trained and competent.
- Wear safety equipment, like helmet, gloves and safety boots.
- Never leave a lifted load unsupervised.
- Lift a load only as much as is really necessary.
- Do not get underneath the load and do not permit others to do so.
- Connections or individual parts of hoisting accessories should never be able to loosen by themselves.
- Hoisting accessories must be stored in a place where they are protected against weather conditions and aggressive substances.
- Defect hoisting accessories are no longer to be used.
- Repairs and checks are to be made only by qualified people.
- It is important to ensure that regular examinations and inspections of lifting gear are undertaken to ensure maintenance is kept, and to verify that the equipment can continue to be safely used.
- Lifting gear inspections must be undertaken on a regular basis, by a person with adequate training, knowledge, skills and expertise.



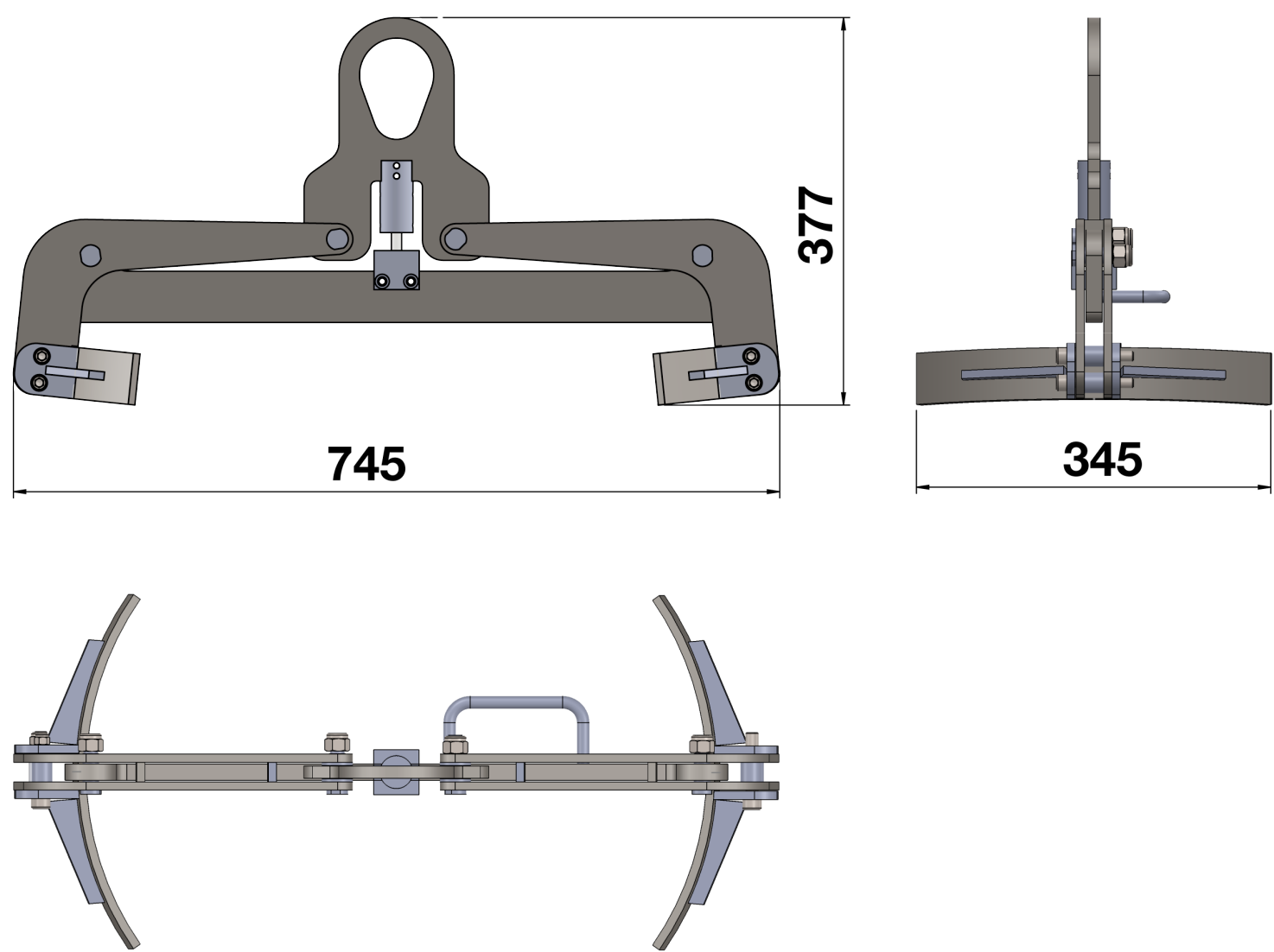
DRAWING LIST



PARTS LIST

POS.	CODE	DESCRIPTION	Q'TY
1	ADC-001	The hook	1
2	ADC-002	Pin Ø 16	4
3	B015070	Socket head cap screw M5x40	2
4	ADC-004	Looking	1
5	T001038	Torque nut M14	4
6	ADC-006	Clamp arm	2
7	T001034	Torque nut M10	4
8	ADC-008	Around pad	2
9	B015119	Socket head cap screw M10x70	4
10	ADC-010	Main fame	1
11	ADC-011	Right pat look	1
12	ADC-012	Left pat look	1
13	B015068	Socket head cap screw M5x30	2
14	ADC-014	Hand weld	1
15	B015098	Socket head cap screw M8x40	2
16	ADC-16	Nut M10	2
17	ADC-017	The hand	2
18	ADC-018	Adjust Nut M10	1
19	ADC-019	Square plate	1
20	ADC-020	Remote pat	1
21	B015080	Socket head cap screw M6x30	2

DIMENSIONS



SPECIFICATIONS

ADC-572	Metric	Imperial
Grip range	572 mm	22 in
Working load limit	500 kg	1102 lb
Net weight	20.3 kg	44 lb
Gross weight	21.8 kg	49 lb
Packaging dimensions	860 x 390 x 210 mm	33.9 x 135.4 x 8.3 in

FEATURES

- Compact design and sturdy constructure by the steel alloy
- Lightweight for easy handling in tight spaces between other drums
- Integrated automatically locking latch mechanism
- Quick and gentle loading to transport drums
- Low cost to maintenance

INSTRUCTIONS FOR USE

Inspect the Drum Clamp before use to ensure that it is in good condition and can safely lift the weight of the drum. And here are the instructions for using the Drum Clamp, specifically designed for lifting and moving the clamp vertically. Ensure that the Drum Clamp is adequately rated to lift the weight of the drum you are working with.

- Attach the drum clamp to a hoist or crane, ensuring that the lifting capacity of the hoist or crane is also adequate for the weight of the drum.
- Position the clamp perpendicular and in the drum's center to balance the load.
- Position the clamp arms around the circumference of the drum, making sure they are evenly spaced and aligned with the center of gravity of the drum.
- Slowly lift the drum off the ground, ensuring it is stable and not swinging or tilting.
- Move the drum to its desired location.
- Once the drum is in place, slowly lower it to the ground or pallet and release the clamp arms.

INSPECTIONS AND MAINTENANCE

There are two types of inspections - in-service and periodic.

In-service:

A visual inspection prior to each use. This implies that prior to each lift, the user has a good look over the lifting clamp to ensure that there is no significant damage or wear, and that the working load limit tag or markings are fitted and limit legible. At this point, if any defects are noted, the lifting clamp should be withdrawn from service, and inspected by a competent person who can make a decision on whether to use, repair or discard the lifting clamp.

Periodic:

The Drum Clamp should be checked and tested every 12 months by a competent person who has been trained and who can make a decision on whether to use, repair or discard the lifting clamp. These inspections also need to be adequately documented and are mandatory in many countries. Always use original spare parts when carrying out repairs or maintenance.

CE – Declaration of conformity:

we declare that the lifter is in conformity with the following standard: The Machinery Directive 2006/42/EC.

Note: It is the responsibility of the user to adapt to state or local laws. The end user is responsible for using the equipment safely in the manner it is designed for and within the rated capacity of the unit.

WARRANTY

At the time of delivery it is necessary to check that the clamp has not been damaged during shipment. Any claims must be presented within eight days of the date delivery of the product. We grant you 12 months warranty on the Aardwolf Drum Clamp, counted from the date of purchase.

The warranty coverage is not applicable if:

- The Clamp is handled incorrectly during manoeuvring.
- The operator fails to comply with the instructions in this booklet.
- The Clamp's maximum permissible capacity is exceeded.
- The specifications for drum thickness are not followed.
- Damages are due to inadequate maintenance and inspections.
- Damage is due to improper storage.
- Repairs were performed by the user without our permission.
- Non-original spare parts were used.



WE ARE PROVIDING

SIMPLE, REALIABLE, COST SAVING
AND **AWESOME IDEAS** FOR YOUR BUSINESS



AARDWOLF PRODUCT VIDEO
www.youtube.com/user/AardwolfGroup



FIND THE AARDWOLF SERVICE CENTRE NEAR YOU

AUSTRALIA

1/5 Stanton Road, Seven Hills NSW 2147

Tel: 02 9838 8427

Web: www.aardwolfaustralia.com **Email:** enquiries@aardwolfaustralia.com

BULGARIA Str.Usta Kolio Ficheto 33 **Tel:** +359 887 933 754

INDIA

Harmara Road, Industrial Area, Madanganj, Kishangarh, District- Ajmer,
Rajasthan India 305801

Web: www.aardwolf.co.in

Tel: +91 73000 68444

Email: sales@aardwolf.co.in

GERMANY

Schulze-Delitzsch-Weg 2, 33175 Bad Lippspringe

Tel: 05252 8382830

USA

19201 South Reyes Avenue, Suite A3 Rancho Dominguez California,

Tel: (562) 553-6050

90221

Web: www.aardwolfusa.com

Email: leo@aardwolfusa.com

VIETNAM

1B, An Phu, Thuan An City, Binh Duong Province, Vietnam

Tel: +84 931 707 793

Web: www.aardwolf.com.au

Email: info@aardwolf.com.au