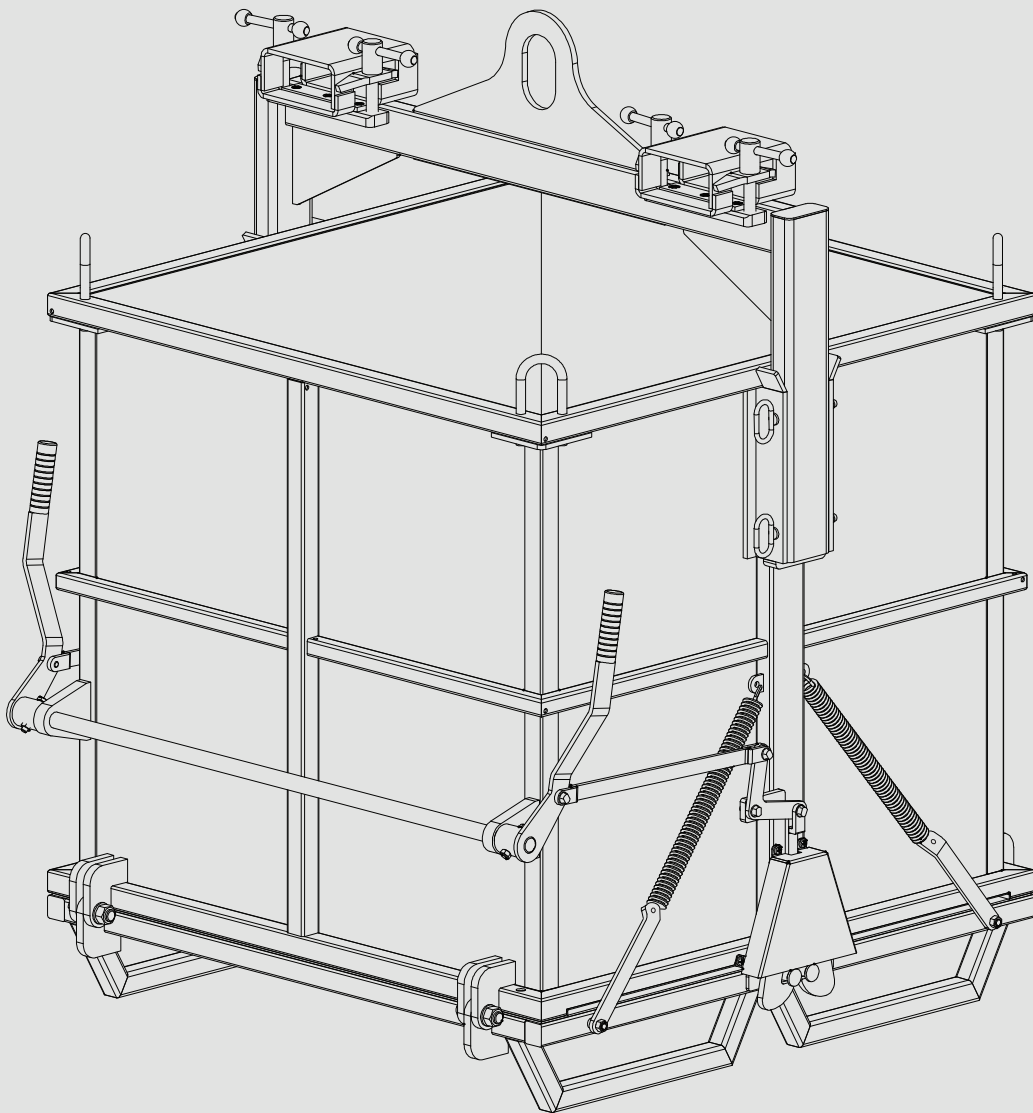


DROP BOTTOM BIN

ADBB-2000



CREATED BY

AARDWOLF INDUSTRIES
Marketing Department

Published on:
January 2025

Contact us:  info@aardwolf.com.au
 www.aardwolf.com.au



INDEX

Page

01 OVERVIEW

Introduction	04
Technical data	05

02 SAFETY INSTRUCTIONS 08

03 USER INSTRUCTIONS 09

04 MAINTENANCE 09

05 WARRANTY 10

06 AARDWOLF SERVICES 11

Dear Customer,

Thank you for choosing the **Drop Bottom Bin - ADBB-2000**.

Please read the manual carefully before use and keep it readily accessible beside the Drop Bottom Bin at all times.

If you have any questions, require spare parts, or need to report any issues, please contact the Aardwolf distributor at your location, provide the product code and serial number, and send them to **info@aardwolf.com.au** for assistance.

We hope this advanced tool meets your needs and exceeds your expectations.

Best regards,

Aardwolf Industries

 info@aardwolf.com.au

 www.aardwolf.com.au

01 OVERVIEW



INTRODUCTION

The heavy-duty Drop Bottom Bin is designed to efficiently store and transfer solid waste materials. Forklifts or cranes can transport this bin to the larger waste point. The bin is emptied by pulling the draw handle, which allows the complete emptying of contents over a large receptacle or dump truck. The bottom base is closed by an automatic locking mechanism when the bin is lowered to the ground.

Key features

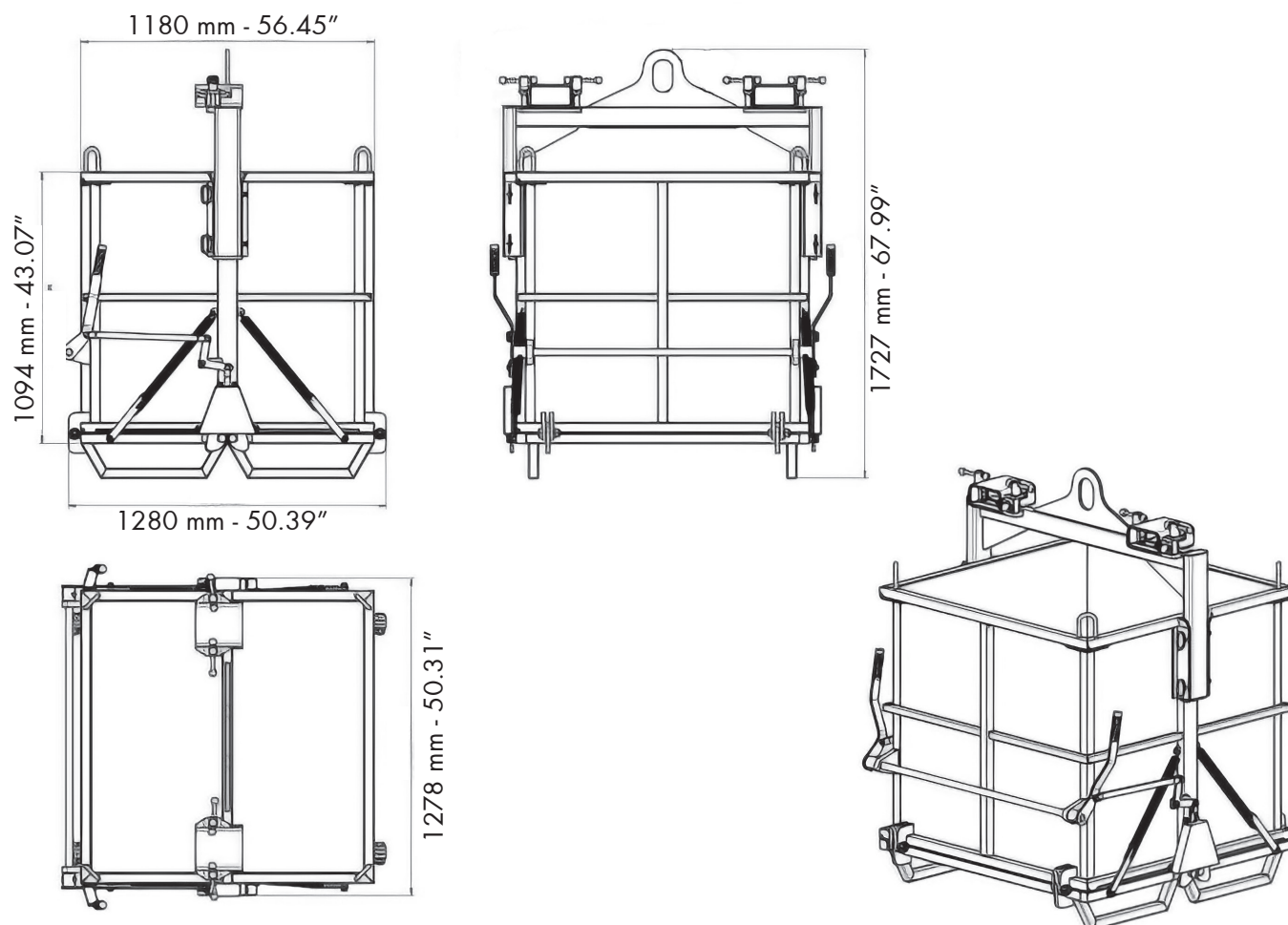
- **Drop Bottom Base**
Allows fast and complete dumping of solid waste
- **Easily Transported**
By forklift or overhead crane
- **Drop Bottom Base**
Is released safely from driver's seat via a pull cord mechanism
- **Forklift and crane lugs**
Fitted as standard
- **Galvanized finished**
Heavy-duty 3mm galvanized reinforced plate to handle all waste products and durable
- **Automatic Locking Mechanism**
When the bin is lowered onto the ground





TECHNICAL DATA

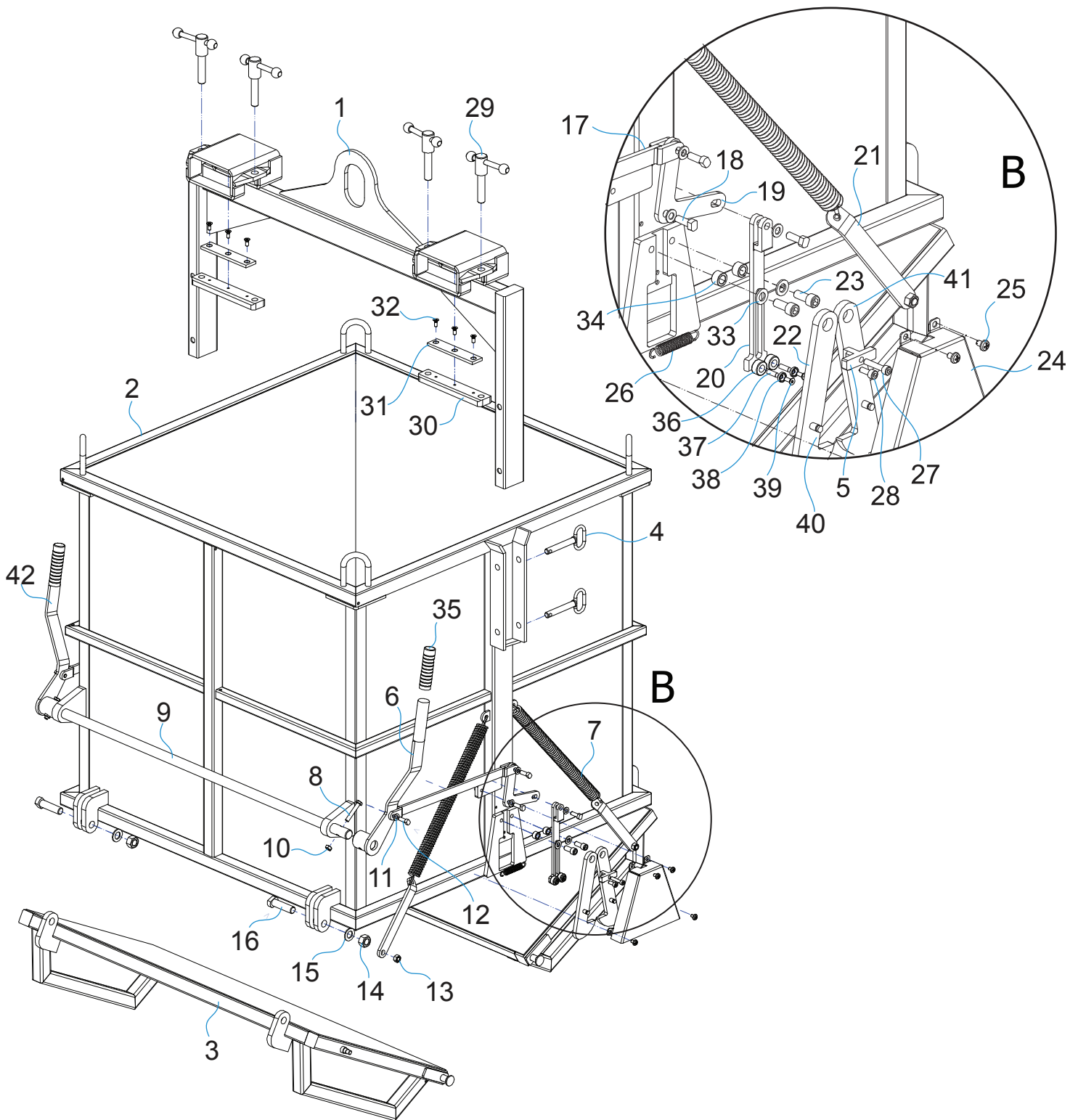
DIMENSIONS



SPECIFICATIONS

ADBB-2000	METRIC	IMPERIAL
Working load limit	1500 kg	3307 lb
Fork pocket	160 x 70 mm	6.3"x2.8"
Fork pocket to fork pocket	1063 mm	41.9"
Net weight	366 kg	807 lb
Gross weight	367 kg	809 lb
Packaging dimensions	1300 x 1300 x 1720 mm	51.2" x 51.2" x 67.7"

DRAWING



PARTS LIST

POS.	DESCRIPTION	Q'TY
1	Frame	1
2	Bin	1
3	Bottom Door	2
4	Locking Pin	4
5	Support Part	2
6	Hand Lever	1
7	Extension Spring	4
8	Hexagon Head Bolts	2
9	Round Bar	1
10	Nut M10	2
11	Washers Ø10	8
12	Pin Ø10 (A)	6
13	Nut M12	4
14	Nut M20	4
15	Washers Ø20	4
16	Thread Shaft M20	4
17	Connecting Rod	2
18	Pin Ø10 (B)	2
19	Knuckle Mechanical	2
20	Pull Rod	2
21	Connectiong Bar	4
22	Hook ADBB-2000	4

POS.	DESCRIPTION	Q'TY
23	Hexagon Socket Head Bolts	4
24	Cover ADBB-2000-024 2	2
25	Countersunk Flat Head Screw	8
26	Small Extension Spring	2
27	Hexagon Socket Head Bolts	2
28	28 Hexagon Socket Head Bolts	2
29	Locking Handle	4
30	Adjust Bar	2
31	Rubber Plate	2
32	Countersunk Flat Head Screw	6
33	Washers Ø12	4
34	Bushing	4
35	Handle Grip	2
36	Roller	4
37	Pin Ø12	4
38	Locking Bushing	4
39	Countersunk Flat Head Screw	4
40	Cover Locking A	2
41	Cover Locking B	2
42	Hand Lever B	1

02 SAFETY INSTRUCTIONS



BASIC SAFETY

- ✦ **Site-Specific Risk Assessment:**
Conduct a thorough risk assessment and lift plan tailored to site conditions.
- ✦ **PPE:**
Ensure personnel wear appropriate PPE, including gloves, hard hats, safety glasses, and steel-toed boots.
- ✦ **Load Stability:**
Keep the bin level, evenly distribute and restrain the load.
- ✦ **Proximity to Hazards:**
Avoid overhead power lines and confined spaces.
- ✦ **W.L.L. Compliance:**
Do not exceed the bin's W.L.L.
- ✦ **Training:**
Operators must be competent and trained.
- ✦ **Clear Area:**
Ensure the work area is clear of obstacles and personnel before operating.
- ✦ **Crush Risk:**
Keep hands and feet away from moving parts.



WARNING

✗ NEVER

- Never use the Bin near overhead power lines, confined spaces, or manually lift over 25kg without assistance.
- Never drag or swing the bin, it's designed for vertical lifting only.
- Never wear loose clothing or jewelry, tie back long hair to avoid entanglement.
- Never operate the equipment if you are tired, unwell, or under the influence of alcohol, drugs, or medication.
- Never use the Bin to store water, chemicals, or explosives.

✓ ALWAYS

- Always read the instructions thoroughly before use.
- Always secure, stabilize, and balance the load before lifting.
- Always clear the working area and landing zone before lowering.
- Always factor in the Bin's weight and attachments when calculating the load and move slowly to avoid instability.
- Always protect bystanders and prevent public access to the working area.

03 USER INSTRUCTIONS

1 Loading

Lower and lock the bin before loading, ensuring the load fits within the bin's walls.

2 Forklift Setup

Set forks to the correct width, align, and fully insert into the pockets.

3 Securing

Turn off the engine, apply brakes, insert heel pins, and secure with a safety chain.

4 Operating

Clear the area, raise the bin slightly, and travel to the discharge area.

5 Tipping

Activate the release lever to tip the bin, then check it returns properly before disengaging.



SCAN HERE

To see how to use

04 MAINTENANCE

- Regular inspections by a qualified engineer are mandatory and recommended every six months.
 - Ensure proper use of detachable lifting gear following relevant guidelines.
 - Store the unit in a clean, upright position in a secure area to prevent unauthorized use.
 - Inspect the equipment before each use and regularly as part of your risk assessment.
- Do not use the equipment if there are any concerns regarding its condition or safety.

05 WARRANTY



PRODUCT CHECK AND REPORTING

Upon receiving the Bin, the buyer should verify, based on the spare parts list and attached spare drawings, that all spare parts are intact and not lost during shipment. Any damages or losses must be officially reported to Aardwolf Industries within eight days of purchase.



WARRANTY INFORMATION

The Bin comes with a 12-month warranty from the date of purchase, following Aardwolf Industries' warranty policy.



WARRANTY EXCLUSIONS

The warranty coverage does not apply if:

- ✘ The Bin is handled incorrectly during maneuvering.
- ✘ The Bin is not installed or maintained according to the provided instructions.
- ✘ The Bin's maximum W.L.L is exceeded.
- ✘ Repairs are performed by the user without permission from Aardwolf Industries.
- ✘ Unofficial spare parts are used.
- ✘ The Bin has been subjected to vandalism or misuse.
- ✘ Damages result from inadequate maintenance and inspections.
- ✘ Damage is due to improper storage.
- ✘ The damage is caused by external factors beyond the manufacturer's control.



DECLARATION OF CONFORMITY

We declare that the Waste Bin conforms to the following standards:

- ✘ The Machinery Directive 2006/42/EC
- ✘ Australian Standard 4991-2004

Note: *It is the user's responsibility to comply with state or local laws. The end user is responsible for using the equipment safely, in the manner it is designed for, and within the unit's rated capacity.*

06 AARDWOLF SERVICES



GLOBAL CONTACT

Our sales network of local field representatives, international subsidiaries and trade partners ensures quick and competent information and consultation in 6 countries worldwide.

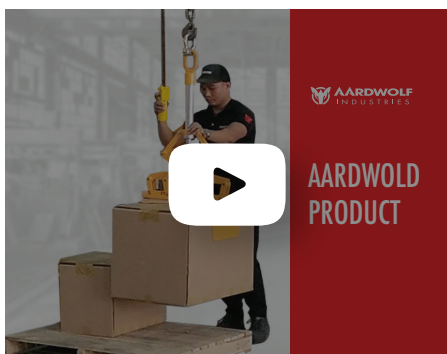
 www.aardwolf.com.au



ONLINE DOCUMENTATION


Conveniently download catalogs and get comprehensive information about our products and services.

 www.aardwolf.com.au/catalog.php



AARDWOLF PRODUCT VIDEOS

In short, easy-to-understand videos we explain the comprehensive functions offered by our products on our Youtube Channel. Take a look, it's worth it!

 www.youtube.com/@Aardwolf.Industries

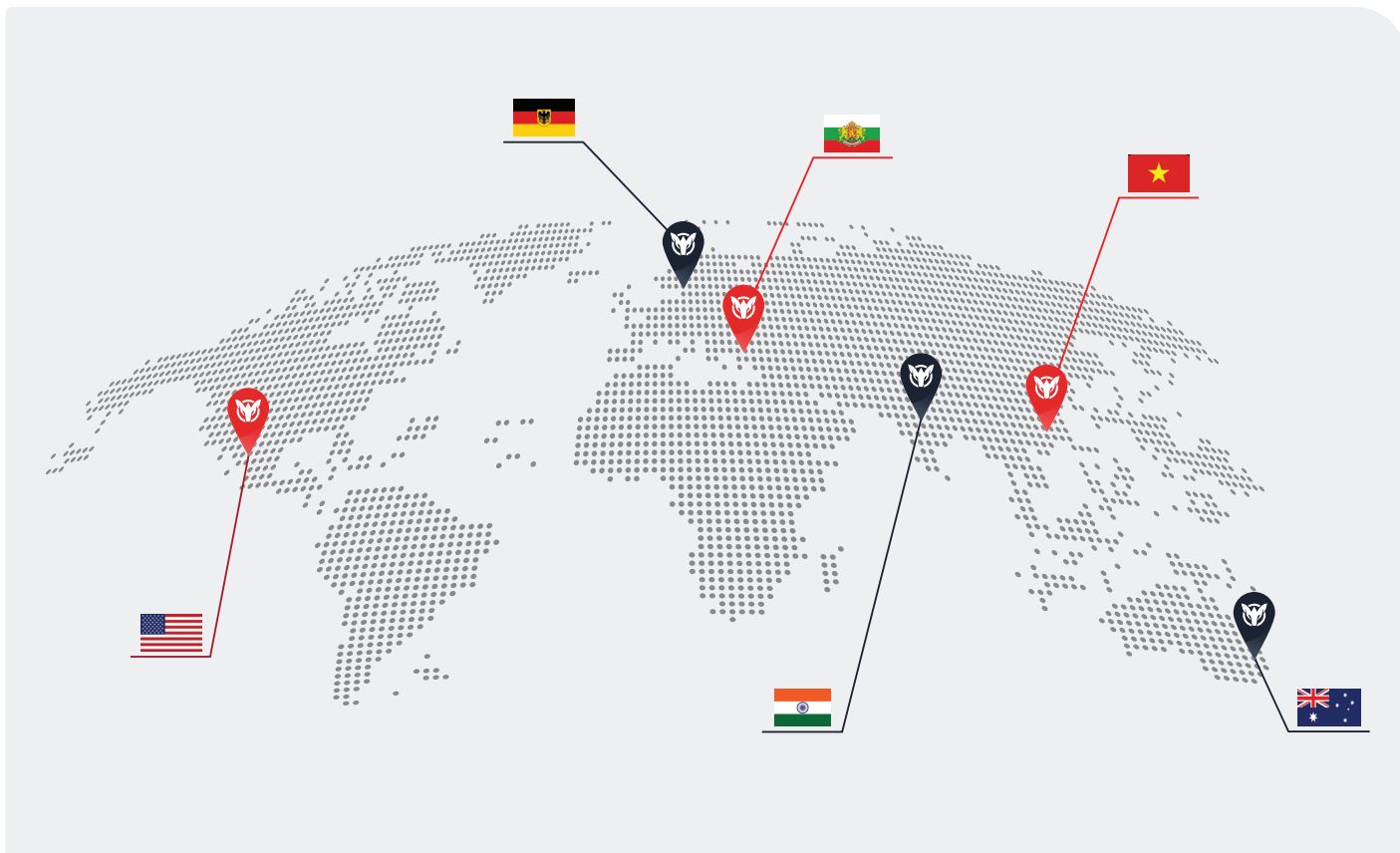


SCAN HERE

To visit our Youtube Channel

WE PROVIDE

Simple, Reliable, Cost Saving And
Awesome Ideas For Your Business



FIND THE NEAREST AARDWOLF SERVICE CENTER

AUSTRALIA

1/5 Stanton Road, Seven Hills NSW 2147
Tel: 02 9838 8427
Email: enquiries@aardwolfaustralia.com
Web: www.aardwolfaustralia.com

BULGARIA

Str.Usta Kolio Ficheto 33
Tel: +359 887 933 754
Email: adrian@toolrange.com

GERMANY

Schulze-Delitzsch-Weg 2, 33175 Bad Lippspringe
Tel: 05252 8382830
Email: sales@toolrange.com.de

INDIA

Harmara Road, Industrial Area, Madanganj, Kishangarh,
District-Ajmer, Rajasthan India 305801
Tel: +91 73000 68444
Email: sales@aardwolf.co.in
Web: www.aardwolf.co.in

USA

9401 Norwalk Blvd, Santa Fe Springs, CA 90670
Tel: (562) 553-6050
Email: sales@aardwolfusa.com
Web: www.aardwolfusa.com

VIETNAM

1B, An Phu, Thuan An City, Binh Duong Province, Vietnam
Tel: +84 931 707 793
Email: info@aardwolf.com.au
Web: www.aardwolf.com.au



