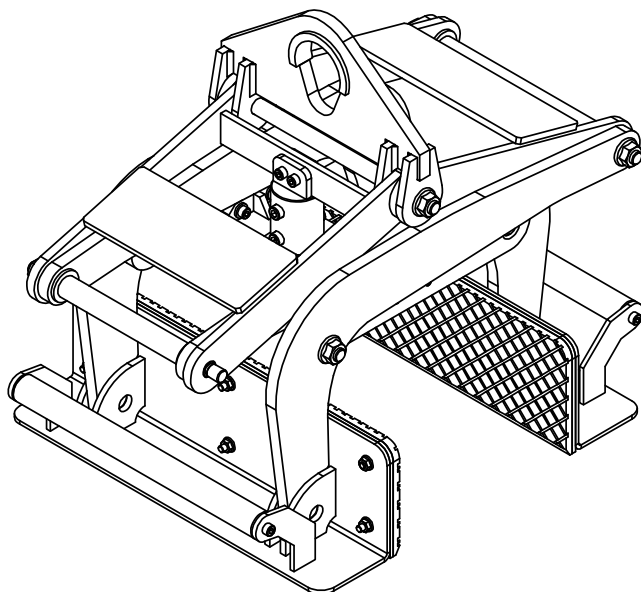




BARRIER LIFTER 2000

OWNER'S MANUAL**PRODUCT CODE: ABL-255/2000**

CONTENTS

- 1 SPECIFICATIONS 2 FEATURES 3 PART DRAWING & PART LIST 4 OPERATING INSTRUCTIONS
- 5 AIR REGULATOR GAUGE 6 INSPECTIONS, MAINTENANCE 7 WARRANTY

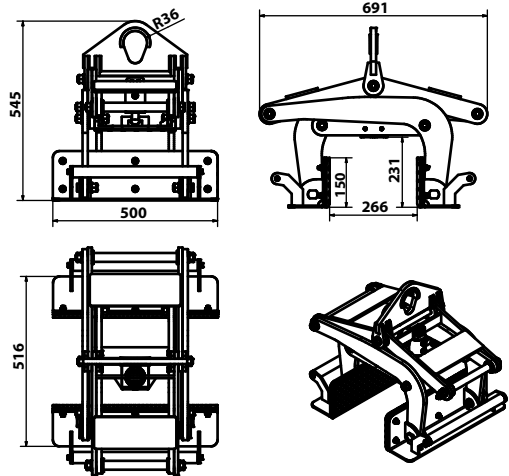
The Aardwolf Barrier Lifter is the solution for lifting and moving large and heavy barrier walls, sandstone blocks and concrete blocks in a safe, easy and efficient manner. The material contact surface is protected by the clamping rubber covering. The clamp is gravity controlled, which opens when rested and closes when lifted.



1. SPECIFICATIONS

Aardwolf Barrier Lifter ABL-255/2000 is born to lift and transport heavy granite slabs, sandstone blocks, and concrete barriers. For lifting slabs, monumental stones, curbs and median walls. It is equipped a new generation gravity controlled clamp mechanism and an improved locking latch plus innovatively vulcanized rubber pads which promise to bring more the safety and efficiency in lifting and transporting the heavy load. This Barrier Lifter is manufactured in compliance with Standards Australia 4994-2004.

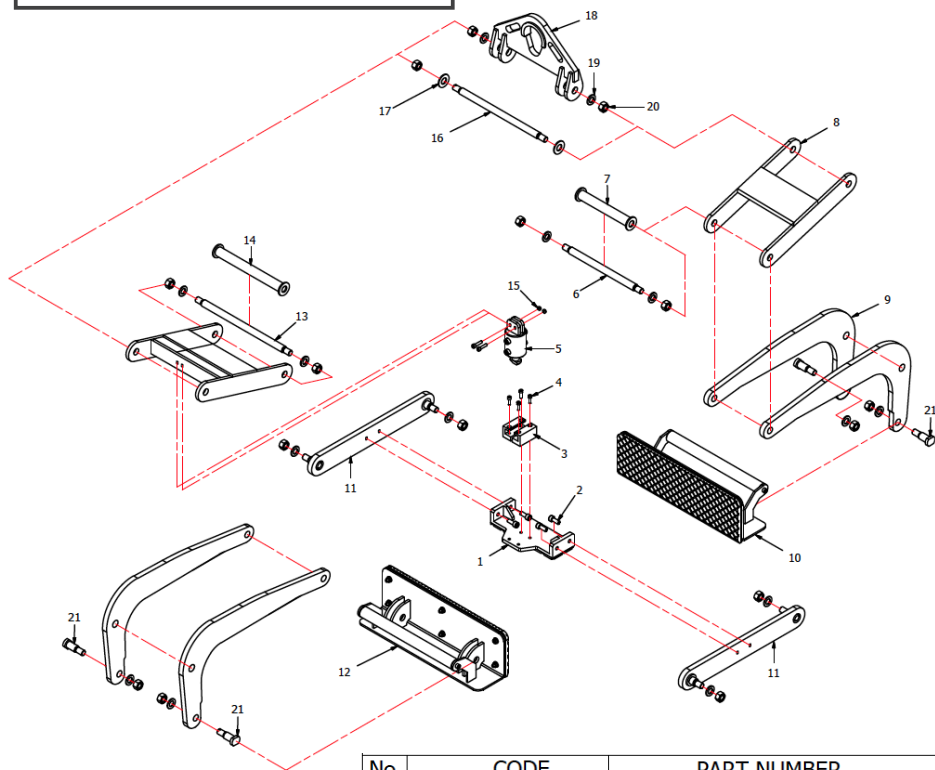
ABL-255/2000	Metric (mm - kg)	Imperial (inch - lb)
Grip range	100 - 255	3.93" - 10"
Working load limit	2000	4409
Net weight	84	185
Gross weight	90	198
Packaging dimension	700 x 500 x 660	27.5" x 19.7" x 26"



2. FEATURES

- Auto locks and unlocks the load
- Vulcanized rubber pads
- Protective rubber-lined bar prevents damage to the material

3. PART DRAWING & PART LIST



No.	CODE	PART NUMBER	QTY
1	ABL-255/2000 - 01	Main Beam	01
2	ABL-255/2000 - 02	Bolt M10 x 25	04
3	ABL-255/2000 - 03	Locking Pad	02
4	ABL-255/2000 - 04	Bolt M8	06
5	ABL-255/2000 - 05	Locking	01
6	ABL-255/2000 - 06	Pin Ø20x355/2 x Bolt M16x25	01
7	ABL-255/2000 - 07	Pipe Ø27 x 265	01
8	ABL-255/2000 - 08	Upper Arm	04
9	ABL-255/2000 - 09	Lower Arm	04
10	ABL-255/2000 - 10	Right Jaw	01
11	ABL-255/2000 - 11	Limited Bar	02
12	ABL-255/2000 - 12	Left Jaw	01
13	ABL-255/2000 - 13	Pin Ø20x258/2 x Bolt M16x25	01
14	ABL-255/2000 - 14	Pipe Ø27 x 205	01
15	ABL-255/2000 - 15	Nut M8	02
16	ABL-255/2000 - 16	Pin Ø20x363/2 x Bolt M16x25	01
17	ABL-255/2000 - 17	Washer Ø20 x 3	02
18	ABL-255/2000 - 18	Hook	01
19	ABL-255/2000 - 19	Washer M16	14
20	ABL-255/2000 - 20	Nut M16	14
21	ABL-255/2000 - 21	Pin Ø20x60/Bolt M16x25	04



4. SAFETY INSTRUCTIONS

Strictly follow the safety instructions to prevent personnel from injure as below:

- Only competent person who is well trained and acquainted with this operating manual and safety regulations.
- All safety regulations and existing standards and codes in your country should be taken into consideration beforehand.
- The manual is ensured to be available at the place during operation.
- Wear properly safety equipment, like helmet, gloves and safety boots.
- Where the clamp is worn or damaged, do not use.
- Determine the weight of the load to be lifted. Do not exceed working load limit displayed on clamp. Size of the load must be a within grip range specified by the manufacturer.
- Do a risk assessment of the material that is being lifted. The load must be free of fractures and other defects to prevent the load from falling.
- Never leave a lifted load unsupervised.
- No one is allowed to be right under the load.
- The grip depends on friction. Check that the rubber pads are free from dirt, grease and other substances that may reduce their effectiveness.
- Connections or individual parts of attachments should never be able to loosen by themselves.
- Repairs and checks should be undertaken by the competent person.
- The attachments must be stored in a place to be protected against weather conditions and aggressive substances.

5. ASSEMBLY

- Carefully check each spare part prior to assembly so that all spare parts are ensured to be brand-new. If any defects are found, contact the manufacturer/distributor at the soonest time.
- There is always a part drawing in front of your eyes as assembly.
- Strictly comply with your country's assembly regulations and standards if any.
- Before attaching this lifter to the crane, carefully check each item is correctly, securely and safely assembled.

6. INSTRUCTIONS FOR USE

Thanks to weight based operation, the lifter works perfectly and effectively in lifting and transporting the heavy slabs, blocks, and barriers.

- Simply attach the hook of lifter to the hook of crane firmly.
- Lower down the lifter squarely at the center of slab so as to insure that the load is balanced during lifting.
- The range of grips is allowed up to 100 - 255 mm.
- The slab must be ensured to be inserted fully into the opening depth of grips.
- The locking latch is automatically released to grip the slab safely and securely.
- Lightly lift up the load and the jaws automatically fasten to the single slab. Lift and transport the load to the desired location.
- As the lifter resting on the load, the locking latch is automatically locked to release the slab.
- Make sure that there is no obstructions causing the load or lifter accidentally detachable.



7. INSPECTIONS & MAINTENANCE

How to protect and increase life expectancy for the lifter?

Below guidelines will be the best ways that you need to follow:

7.1 INSPECTIONS:

Check the ABL-255/2000 regularly to make sure it does not exhibit the following faults:

- Check the lifter's structure for visual damage.
- Check the rubber pads to ensure they are clean.
- Check the entire lifter for cracks, cuts, corrosion or any deficiency.
- Check that the lifter has no missing parts.
- Check that the edges of the lifter are not cut or damaged while sealing.
- Repair all faults before using the lifter.

7.2 MAINTENANCE:

A good maintenance planning will bring benefits for your lifter. It is not only increase safety and using values, but also reduce maintenance cost. So what should you do?

- Perform maintenance periodically.
- Check the rubber pads to ensure that they are free from dirt and that the edges of the rubber pads are not cut or damaged.
- If the lifter is used for less than one day in a two-week period, you should perform an inspection and maintenance to ensure that the lifter is safe and does not have any faults.
- The lifter may experience normal wear and tear and ageing. You should replace any reduced quality parts with new original parts.
- The lifter and hoisting accessories must be stored in a place where they are protected against weather conditions and aggressive substances.

8.1 WARRANTY

After receiving the goods receipt, it is strongly recommended to the buyer to check for sure, based on the spare part list and spare drawing attached with the goods, that the spare parts has not been damaged or lost during shipment. Any damages or losses must be officially claimed to Aardwolf Industries LLC's within eight days since the date of goods receipts.

This handler is granted a 12-month warranty based on Aardwolf Industries LLC's warranty policy since the date of purchase.

The warranty coverage is not applicable:

- Whenever the lifter is handled incorrectly during manoeuvring.
- Whenever the user fails to comply with the instructions in this booklet.
- Whenever the lifter's maximum permissible capacity is exceeded.
- Whenever the specifications for stone thickness are not followed.
- Whenever damages are due to inadequate maintenance and inspections.
- Whenever damage is due to improper storage.
- Whenever repairs were performed by the user without our permission.
- Whenever unofficial spare parts were used.

8.2 DISCLAIMER:

Aardwolf Industries LLC's warranty does not cover the incorrect assembly and misuse of handler, the lack of maintenance and repair of handler, the operation by non-competent or non-permission user or non-original spare parts used or installed.





AMERICA



AARDWOLF AMERICA

- 📍 19201 S Reyes Avenue, Unit C7
Compton California, 90221
- ☎ (562) 553-6050
- ✉ leo@aardwolfusa.com
- 🌐 www.aardwolfusa.com

INDIA



AARDWOLF NORTH INDIA

- 📍 Harmara Road, Industrial Area,
Madanganj, Kishangarh, Rajasthan
India / Pin no. 305801
- ☎ Tel: +91 93584 48474
- ✉ sales@aardwolf.co.in
- 🌐 Web: www.aardwolf.co.in

AUSTRALIA



AARDWOLF AUSTRALIA

- 📍 1/5 Stanton Road,
Seven Hills NSW 2147
- ☎ +02 9838 8427
- ✉ enquiries@aardwolfaustralia.com
- 🌐 www.aardwolfaustralia.com

INDIA

AARDWOLF SOUTH INDIA

- 📍 # 9/27, Ground Floor, 5th Main Road,
Ganesha Block, Sultanpalya,
RT Nagar Post, Bengaluru-560 032
- ☎ +91 990172 4600
- ✉ bengaluru@aardwolf.co.in
- 🌐 www.aardwolf.co.in

GERMANY



STONE GLASS EQUIPMENT UG

- 📍 Am GutstKch 11, 8451Crimmitschau
Blankenhain, Germany.
- ☎ +49 366 0811 9236
- ✉ sales@aardwolf.com.de
- 🌐 www.aardwolf.com.de

INDIA

AARDWOLF CENTRAL INDIA

- ☎ +91 97659 06007
- ✉ mumbai@aardwolf.co.in
- 🌐 www.aardwolf.co.in

VIETNAM



AARDWOLF VIETNAM

- 📍 1B, An Phu, Thuan An,
Binh Duong, Vietnam.
- ☎ +84 274 371 2827438/39
- ✉ sales@aardwolf.com.au
- 🌐 www.aardwolf.com.au

