

# AARDWOLF LANDSCAPE



**AARDWOLF PRODUCT VIDEO**  
[www.youtube.com/user/AardwolfGroup](https://www.youtube.com/user/AardwolfGroup)

WE WORK  
HARDER,  
SMARTER  
TO MAKE  
YOUR WORK  
MORE  
EFFICIENT,  
EASIER  
AND SAFER.



# Table Of Content

Aardwolf Slab Lifters	02 - 03
Scissor Clamp Lifters	04
Horizontal Stone Lifting Clamps	05
Aardwolf Stone Grapple	06
Rock Lifters Grapple	06
Monument Clamps	07
Self-locking Trolleys	07
Vacuum Lifter Handy	08
Small Pneumatic Vacuum Lifter	08
Paving Stone Lifter	09
Vacuum Paver Lifter	09
Vacuum Block Lifter	09
Vacuum Lifter with Petrol Fuelled Engine	09
Aardwolf Barrier Lifters	10
Versa Block Clamps	10
Stone Carrying Hand Clamps	11
Drywall Trolleys	12



# Aardwolf Slab Lifters

Aardwolf offers a new version of its patented Aardwolf Slab Lifters.

The new Aardwolf Slab Lifters Automatic have an integrated auto-lock, unlock mechanism (patent pending), which allows the clamp to automatically grip slabs on pick-up and release the slabs on set down. In many situations, this makes moving and handling of slabs safer and more convenient.



VIDEO GUIDE



**01 Size:**  
Being of compact construction, the Aardwolf Slab Lifter Automatic allows for close packed stone slabs to be lifted out of racks and containers. Lower height slabs placed along side of taller slabs offer no problem, as is the case with scissor clamps.

**02 Safety:**  
Requires only a small movement of the slab to engage and grip the slab, which is generally well below the over balance angle thus eliminating the danger to the operator.

**03 Versatile:**  
Ideal for construction work. Because the clamping mechanism is to the front of the slab, they allow panels to be placed close against walls.

**04 Secure:**  
The Aardwolf clamps grip marble and granite slabs firmly. This Aardwolf Slab Lifter Automatic has a force-multiplying factor of approximately 2.5 to 1.

## AUTOMATIC

## AARDWOLF SLAB LIFTERS



**AL30AWJ**



**AL50A**



**AL60A**



**AL75A**

Grip range

Working load limit

0 - 30 mm | 0 - 1.2"

1200 kg | 2646 lb

10 - 50 mm | 0.4" - 2"

1200 kg | 2646 lb

15 - 60 mm | 0.6" - 2"

1200 kg | 2646 lb

30 - 75 mm | 1" - 3"

1200 kg | 2646 lb



# Aardwolf Slab Lifters

The patented Aardwolf Slab Lifters are an accessory for lifting and moving slab-form loads.

The Aardwolf Slab Lifters incorporate a spring-loaded latch that automatically release the lifter from the slab once the slab has been fully lowered to the ground. These make the process of lifting and lowering of slabs a one man operation.



#### Size:

Being of a compact construction, the Aardwolf Slab Lifters allow for close packed stone slabs to be lifted out of racks and containers. Lower height slabs placed along side of taller slabs offer no problem, as is the case with scissor clamps.



#### Safety:

Requires only a small movement of the slab to engage and grip the slab, which is generally well below the over balance angle thus eliminating the danger to the operator.



#### Versatile:

Ideal for construction work. Because the clamping mechanism is to the front of the slab, they allow panels to be placed close against walls.



#### Secure:

The Aardwolf clamps grip marble and granite slabs firmly. The Aardwolf Slab Lifters have a force-multiplying factor of approximately 3 to 1.



VIDEO GUIDE

## STANDARD

## AARDWOLF SLAB LIFTERS

	AARDWOLF SLAB LIFTERS				
					
	<b>AL30</b>	<b>AL50</b>	<b>AL60</b>	<b>AL75</b>	<b>AL50B</b>
Grip range	0 - 30 mm   0 - 1.2"	10 - 50 mm   0.4" - 2"	15 - 60 mm   0.6" - 2"	30 - 75 mm   1" - 3"	10 - 50 mm   0.4" - 2"
Working load limit	1200 kg   2646 lb	1200 kg   2646 lb	1200 kg   2646 lb	1200 kg   2646 lb	1200 kg   2646 lb



# Scissor Clamp Lifters

The Aardwolf Scissor Clamp Lifters are equipped with a rubber contact pad for the safe handling of materials. By means of a gravity controlled locking latch, the clamp automatically grips and releases the materials. Suitable for lifting marble and granite slabs, tombstones, concrete barriers, curbs (kerbs) and median walls.

- Auto locks and unlocks
- Long-lasting, high friction replaceable Polyurethane gripping pads
- Protective rubber-lined bar prevents the material from chipping



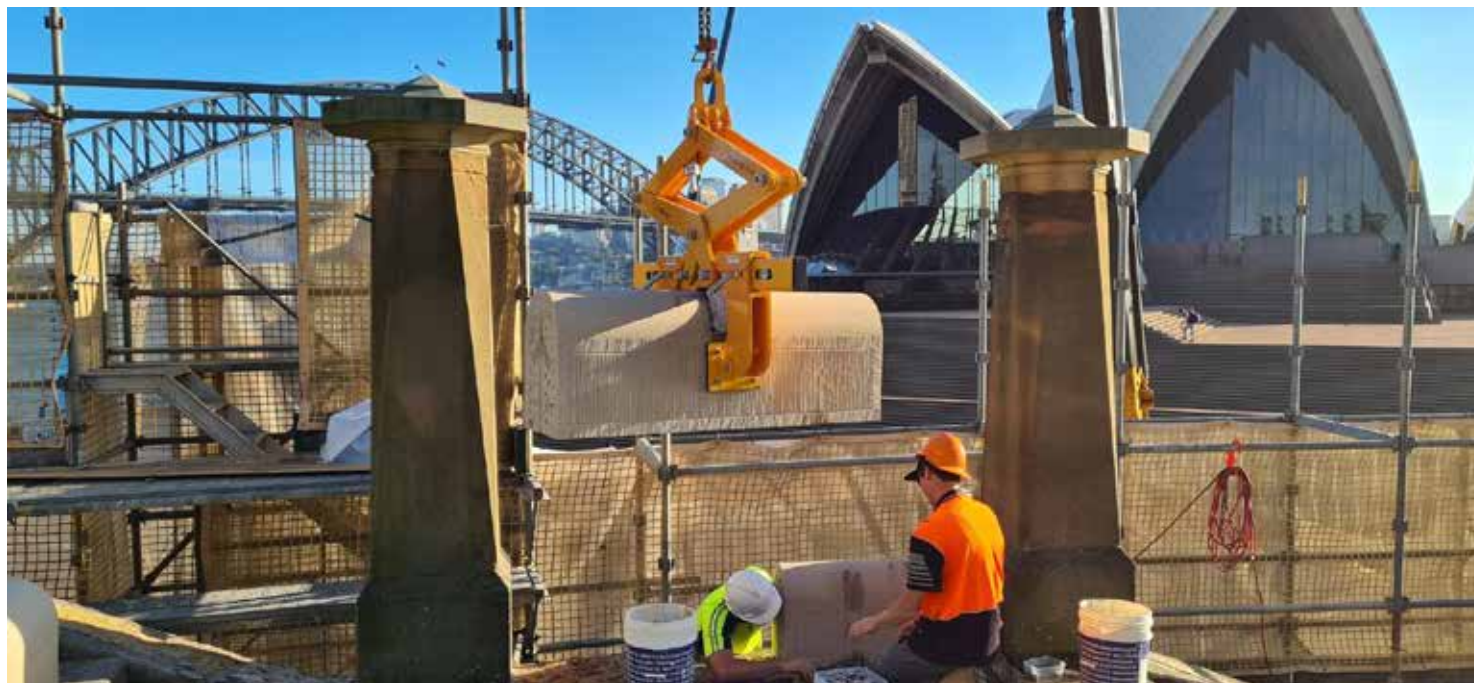
VIDEO GUIDE



<b>Grip range</b>	0 - 105 mm   0 - 4"	0 - 125 mm   0 - 5"	50 - 200 mm   2" - 8"	150 - 300 mm   6" - 12"	300 - 450 mm   12" - 18"
<b>Working load limit</b>	750 kg   1653 lb	750 kg   1653 lb	1000 kg   2204 lb	1500 kg   3307 lb	2000 kg   4408 lb



# Horizontal Stone Lifting Clamps



For lifting and moving of concrete blocks and natural stone. Long-lasting, high friction replaceable Polyurethane gripping pads protect load surfaces against damage. Suitable for use on cranes or forklift booms.

Clamp jaws are gravity controlled. They open automatically on every second lift and close on every second lift.

- Adjustable jaw opening width.
- A large gripping range, making it suitable for a wide range of applications.
- Long-lasting, high friction replaceable Polyurethane gripping pads.
- Lifting eye for attaching to a crane hook.
- Auto locks & unlocks the load.



AHLC-730



AHLC-1050



AHLC-1370



AHLC-2010



AHLC-2010-4T

Product Code	AHLC-730	AHLC-1050	AHLC-1370	AHLC-2010	AHLC-2010-4T
Grip range	280 - 730 mm   11" - 28"	280 - 1050 mm   11" - 41"	280 - 1370 mm   11" - 54"	280 - 2010 mm   11" - 79"	300 - 2010 mm   12" - 79"
Working load limit	1500 kg   3307 lb	1500 kg   3307 lb	1500 kg   3307 lb	1500 kg   3307 lb	4000 kg   8818 lb



# Aardwolf Stone Grapple

## PRODUCT CODE: *ASG*

Aardwolf Stone Grapple is an attachment that is mainly used for stones, rocks, and other large irregular shaped objects that need to be handled, moved and loaded onto a truck or other industrial vehicle.

Aardwolf Stone Grapple has three arms that are designed to lift rocks & stones and provide a stable lift of irregularly shaped heavy boulders. The 3-point design provides for a quick, secure lift that creates a safe and easy way to move large objects using a single operator.

The Aardwolf Stone Grapple requires no hydraulics to operate. The Stone Grapple lifting tongs are fully automatic and give the operator complete control to grip or release a load. The three serrated tines contacting the load allow for a very stable lift cycle every time. Once the operator lowers the stone grapple onto a bolder, the stone grapple's internally-housed actuator allows the operator to begin lifting the bolder.

Once the bolder is set down, the stone grapple's internally-housed actuator allows the operator to lift the stone grapple from the bolder, ready for the next lift cycle.

- 3-point design.
- Lifts irregular shaped objects or debris.
- Quick load cycles.
- Large jaw opening that allows it to pick up large boulders.



<b>Grip range:</b>	350 - 1200 mm 14" - 47"
<b>Working load limit:</b>	2000 kg   4408 lb

# Rock Lifters Grapple

The Rock Lifter Grapple are an attachment that makes moving and setting large rocks and boulders a snap. Designed for the landscape contractor, stonemason, or anyone else who works regularly with rocks and boulders. The Rock Lifter Grapple is an efficient solution to work faster, better and with less labor.



**ARL-800**



**ARL-1200**

- High tensile steel welded construction.
- Simple and reliable operation with minimal maintenance.
- A safer and easy way to move large rocks.
- Suitable for handling boulders and stones of almost all shapes.
- The greater the weight the harder the grip of the tongs.
- An actuator allows the clamp to grab and release automatically during each cycle.



Product Code	Grip Range		Working load limit	
ARL-800	350 - 800 mm	14" - 31"	750 kg	1653 lb
ARL-1200	600 - 1200 mm	24" - 47"	1500 kg	3307 lb



# Monument Clamps



GPM1000

GPM1000A

GPM1500A

The Aardwolf Monument Clamp/Lifters (Automatic) are ideal for lifting and setting concrete, stone, and marble building fascia. It is useful for moving and setting heavy or awkward retaining wall blocks and slabs. The slim profile allows it to set material in tight places.

Product Code	Grip Range		Working load limit	
GPM1000	0 - 407 mm	0 - 16"	1000 kg	2204 lb
GPM1000-A	20 - 300 mm	1" - 12"	1000 kg	2204 lb
GPM1500-A	20 - 300 mm	1" - 12"	1500 kg	3307 lb

# Self-locking Trolleys

The automatic clamping feature allows the trolley to move and transport heavy slab materials in a flexible and easy manner. Pneumatic wheels with a high grip meet the demand for transport on every terrain from even to rough.

SL155

SL100

SL85

SL60

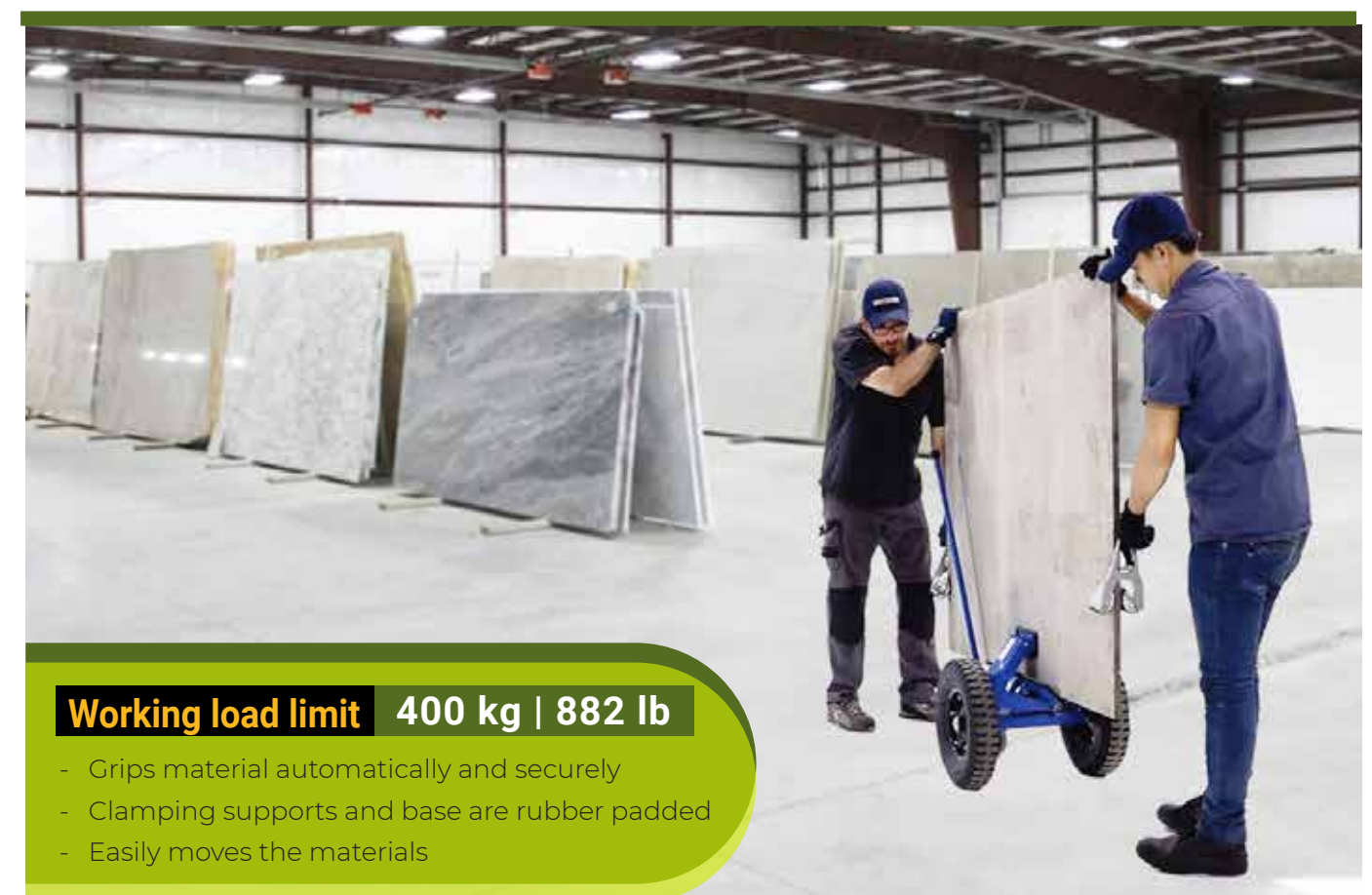


Grip range:  
0 - 155 mm  
0 - 6 in

Grip range:  
0 - 100 mm  
0 - 4 in

Grip range:  
0 - 85 mm  
0 - 3 in

Grip range:  
0 - 60 mm  
0 - 2 in



**Working load limit** 400 kg | 882 lb

- Grips material automatically and securely
- Clamping supports and base are rubber padded
- Easily moves the materials





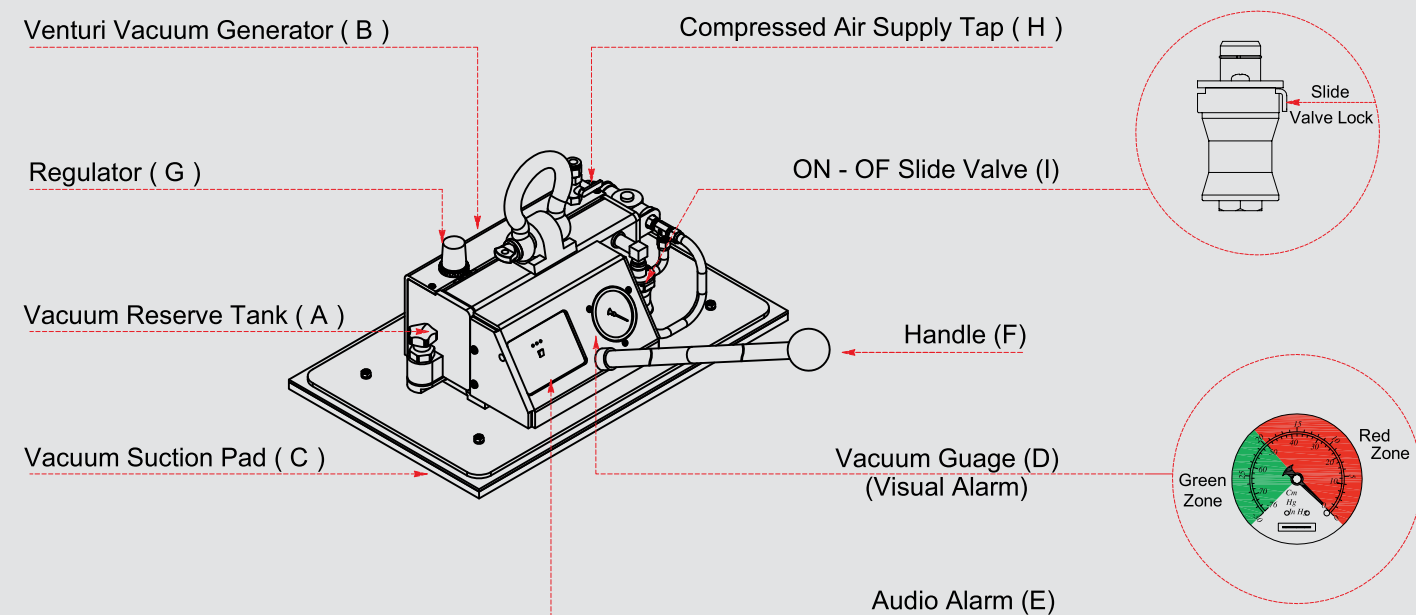
## Vacuum Lifter Handy

The Vacuum Lifter Handy is powered by a venturi vacuum generator, which needs a source of compressed air in order to function but requires no electricity.

The vacuum generator has no moving parts and therefore no lubrication is required. This lifter consists of four (4) pads to make it can be replaced with different pads so that it fits with the sizes of materials.

**Product Code: AHVL500**

Pad sizes	Working load limit
520 x 125 mm 20.5" x 5"	120 kg 265 lb
520 x 160 mm 20.5" x 6.3"	180 kg 397 lb
520 x 220 mm 20.5" x 8.7"	280 kg 617 lb
520 x 320 mm 20.5" x 12.6"	500 kg 1102 lb



## Small Pneumatic Vacuum Lifter

**PRODUCT CODE: SPVL-100**

The Small Pneumatic Vacuum Lifter is a small compact design vacuum lifter, which allows operators to adapt to various applications. The low weight and versatility make heavy loads easy to handle in vertical and horizontal positions, so only one person is required to handle loads.

- Attach & release materials with an ON/OFF slide valve.
- Clip-in battery operated audio alarm & energy saver.
- Work pieces can be moved vertically and horizontally.
- Highest possible safety with both visual & audio alarms.
- Integrated energy saver switch.
- Operating pressure 4/6 Bar.
- All aluminum construction including suction pad.
- Vacuum reservoir. 1L (61.0 cubic inches).
- Standard gaskets made of rubberized fabric and mousse suitable for smooth, flamed and bush-hammered surfaces.
- **WORKING LOAD LIMIT: 120 KG (265 LB)**





## Paving Stone Lifter



### Product Code: APSL

The Paving Stone Lifter saves time and reduces stress on the back and knees when installing paving flags. It can also be used with concrete, sandstone, slate, etc. Safe lifting height recommends when using the Paving Stone Lifter is no more than 75mm (3") to 125mm (5") above the work area.

The size of suction plates	200 x 200 mm   8" x 8"
	60 kg   132 lb
	260 x 260 mm   10" x 10"
	120 kg   264 lb
Width of handles	600 mm   23.6"

## Vacuum Block Lifters



A powerful battery-operated vacuum lifting device for laying marble, granite slabs, concrete, and other related materials. Robust and compact, this Vacuum Block Lifter can be suspended on all types of lifting equipment by means of load hooks, chains, cables, etc.

Code	Pad sizes	W.L.L
AVBL380	520 x 320 mm 20.5" x 15"	380 kg 838 lb
AVBL1000	500 x 800 mm 31.5" x 19.7"	1000 kg 2204 lb

## Vacuum Paver Lifter

### Product Code: AVPL40

- Handling tiles or stone up to 40 kg.
- Quality construction.
- Includes two handles for one man.
- Operates using standard compressors.
- Simple operation by pressing the lever down to pick up a tile, then releasing the lever once the tile is in place.
- Industrial male quick connect.
- The lifter includes:
  - Pad 1: 120 x 220 mm (4.7" x 8.7") = 40 kg (88 lb)**
  - Pad 2: 80 x 120 mm (3.1" x 4.7") = 12 kg (26 lb)**
- **Option:** Aardwolf provides an option vacuum cup with diameter 150 mm (6") = 40 kg (88 lb) upon request.



## Vacuum Lifter with Petrol Fuelled Engine

### Product Code: APVL-1000

This vacuum lifter with a petrol-fuelled engine can handle heavy concrete elements of up to 1 tonne quickly and precisely. Providing for the easy and efficient handling and laying of natural stone, concrete and marble slabs, and steps, etc.

- Compact and robust structure.
- Integrated vacuum gauge for controlling the vacuum leak
- Lifting eye for easy attaching a mobile crane
- **Working load limit: 1000 kg – 2204 lb**
- **Pad sizes: 800 x 500 mm**
- **Motor: 0.98 bar**





# Aardwolf Barrier Lifters

The Aardwolf Barrier Lifters are the solution for lifting and moving heavy granite slabs, sandstone blocks and concrete barriers in a safe, easy and efficient manner.

The contact surface of the material is protected by the rubber covering the clamp. The clamps are gravity controlled, which opens when rested and closes when lifted.

- Auto locks and unlocks
- Vulcanized rubber pads
- Protective rubber-lined bar prevents the material from chipping



Product Code	Grip Range		Working load limit	
ABL-255/2000	100 - 255 mm	4" - 10"	2000 kg	4408 lb
ABL-255/3000	100 - 255 mm	4" - 10"	3000 kg	6614 lb
ABL-360/5000	100 - 360 mm	4" - 14.2"	5000 kg	11023 lb

# Versa Block Clamps

The Versa Block Clamps are made for lifting and moving concrete blocks, rubber tires, drums or other materials. The clamps consist of two sliding pads that can be adjusted to the desired widths and they are locked by a locking latch on each side.

The Versa Block Clamps are a multipurpose solution when fitted with different jaws to grab the different material types, whether square or curved shapes.

These jaws can be easily changed and reversed to allow for picking up objects from the inside face or inside out.

- Handles heavy loads with different capacities.
- Grips and releases the load automatically.
- The jaw width is simple and easy to adjust.
- The rubber jaws protect loads from being damaged.
- Optional jaws for different material shapes.
- Lifting eye allows for easy hook attachment.



Product Code	Grip Range		Working load limit	
AVBC-600	100 - 610 mm	4" - 24"	1200 kg	2646 lb
AVBC-1100	150 - 1100 mm	6" - 43.3"	3000 kg	6614 lb



# Stone Carrying Hand Clamps

## Stone Panel Carriers SCC02

- Finger trigger jaw opening and load release mechanism.
- Constructed of sturdy lightweight aluminum.
- Jaws are continuously self-adjusting.
- High-friction vulcanized rubber gripping pads mounted on both plates protect the surfaces of the materials from being damaged or marred.
- Moulded rubber hand grips.
- Locks onto panels automatically.
- The vice-like grip on panels.



## Stone Kerb Clamp ASKC200

This two-man block clamp is suitable for a large range of handling applications, such as lifting/handling concrete and granite kerb stone as used in road construction or for heavy building blocks. The center chain can be attached to machines for heavy lifting.

- Powder-coated frame to resist corrosion and rust
- Tilting pads ensure maximum grip

## Stone & Curb Placement Clamp SCC04

This two-man block clamp is ideal for installing concrete or stone curbs. Designed to make the work easy and comfortable without pains when working hours are over.



## Carry Clamps for Sheet Material SCC03 & SCC05

The Carry Clamps for Sheet Material are used in pairs, allowing you to lift and carry panels safely and comfortably.

The clamps design use the weight of the stone to provide the clamping action. A vulcanized rubber lining on the jaws prevents damage to the surface of the material.



Product Code	Grip Range		Working load limit	
SCC02	0 - 52 mm	0 - 2"	150 kg/Pair	331 lb/Pair
SCC03	0 - 50 mm	0 - 2"	200 kg/Pair	441 lb/Pair
SCC05	50 - 100 mm	2" - 4"	200 kg/Pair	441 lb/Pair
SCC04	100 - 500 mm	4" - 20"	200 kg	441 lb
ASKC200	0 - 260 mm	0 - 10"	200 kg	441 lb



Working Load Limit:  
**1000 kg | 2204 lb**

# Drywall Trolleys

The Aardwolf Drywall Trolleys are ideal for transporting a vast range of boards from doors, fences, drywall & large sheet panels within the factory and on building sites. Heavy-duty casters allow easy manoeuvring of fully-loaded carts in the workshop and on the construction site.



**LABOR SAVINGS**



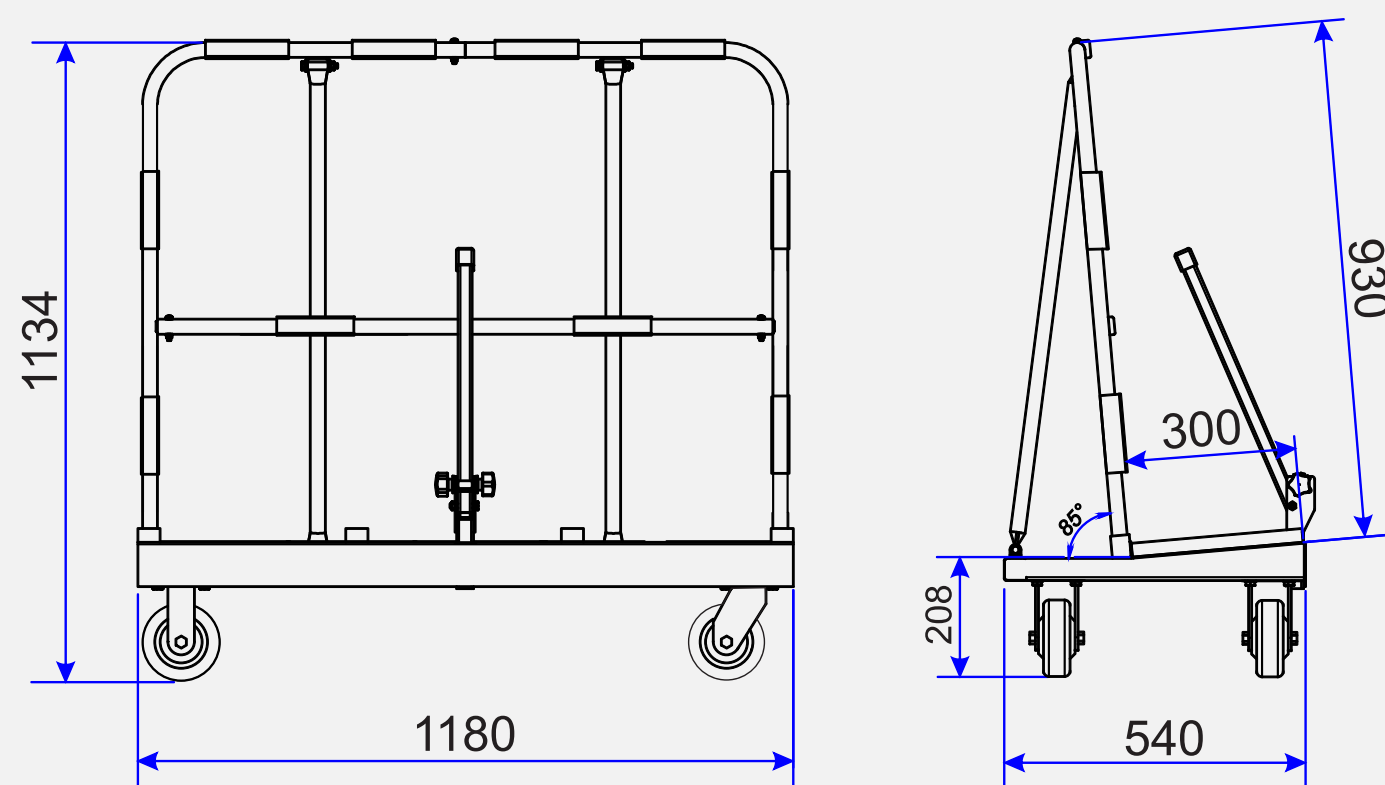
**DURABLE**



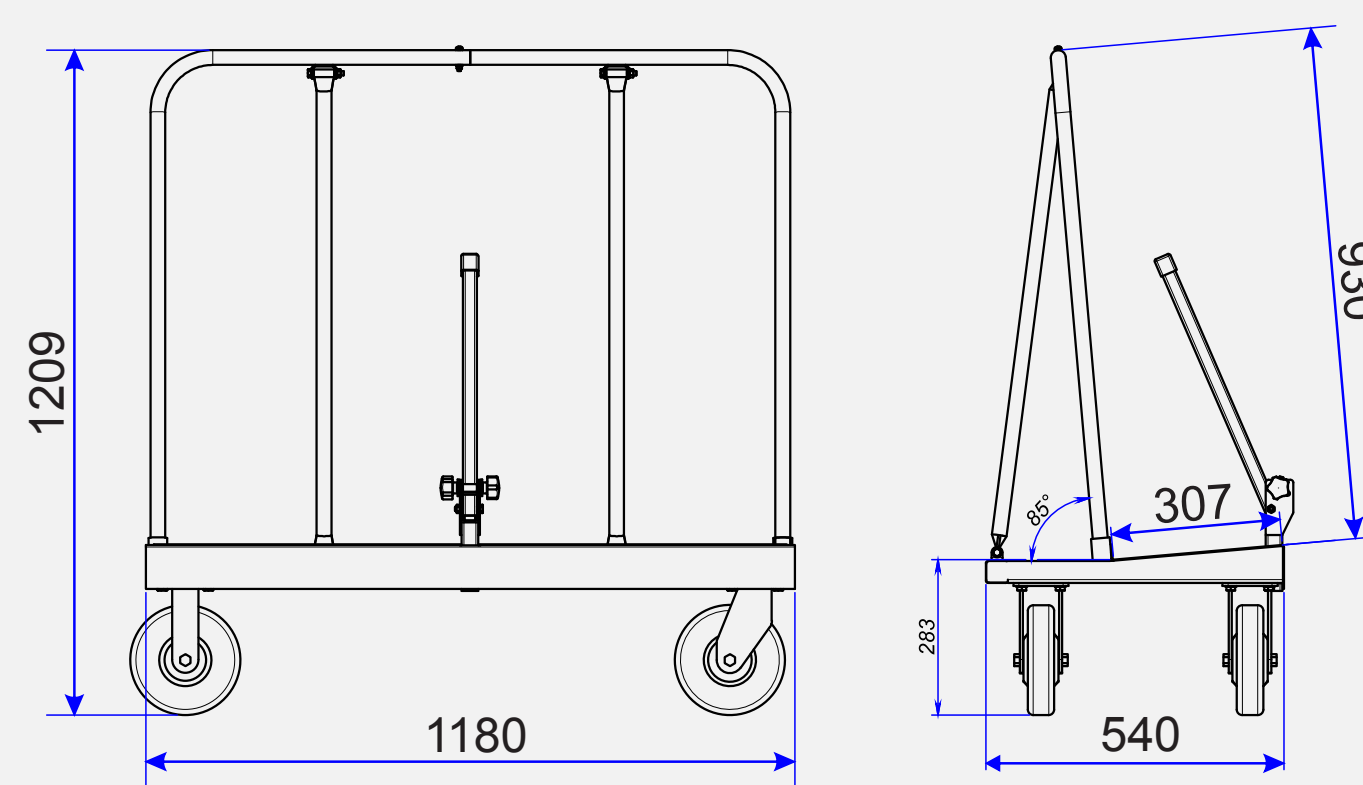
**MUTE**

- These are equipped with a crossbar for transporting and storing small stone slabs.
- The load-bearing and the base surfaces are mounted rubber and timber to prevent stone slabs from breaking.
- Two fixed casters and two rotary casters for easy control.
- The smart arrangement of parts to increase stability.
- Durable electrostatic coating.

Product Code: **DWT-1180P**



Product Code: **DWT-1180**







LIFTING EQUIPMENT JIB CRANES FORKLIFT EQUIPMENT SLAB & BUNDLE RACKS FRAMES WORKSHOP EQUIPMENT



# Get The Aardwolf AAdvantage

**SCAN TO CONTACT:**



## FIND THE AARDWOLF SERVICE CENTRE NEAR YOU

### AUSTRALIA

1/5 Stanton Road, Seven Hills NSW 2147

Tel: 02 9838 8427

Email: [enquiries@aardwolfaustralia.com](mailto:enquiries@aardwolfaustralia.com)

[www.aardwolfaustralia.com](http://www.aardwolfaustralia.com)

### BULGARIA

Str.Usta Kolio Ficheto 33

Tel: +359 887 933 754

Email: [adrian@toolrange.com](mailto:adrian@toolrange.com)

### INDIA

Harmara Road, Industrial Area, Madanganj, Kishangarh,

District- Ajmer, Rajasthan India 305801

Web: [www.aardwolf.co.in](http://www.aardwolf.co.in)

Tel: +91 73000 68444  
Email: [sales@aardwolf.co.in](mailto:sales@aardwolf.co.in)

### GERMANY

Schulze-Delitzsch-Weg 2, 33175 Bad Lippspringe

Tel: 05252 8382830

### USA

19201 South Reyes Avenue, Suite A3 Rancho Dominguez

California, 90221

Web: [www.aardwolfusa.com](http://www.aardwolfusa.com)

Tel: (562) 553-6050

Email: [leo@aardwolfusa.com](mailto:leo@aardwolfusa.com)

### VIETNAM

1B, An Phu, Thuan An City, Binh Duong Province, Vietnam

Tel: +84 931 707 793

Web: [www.aardwolf.com.au](http://www.aardwolf.com.au)

Email: [info@aardwolf.com.au](mailto:info@aardwolf.com.au)